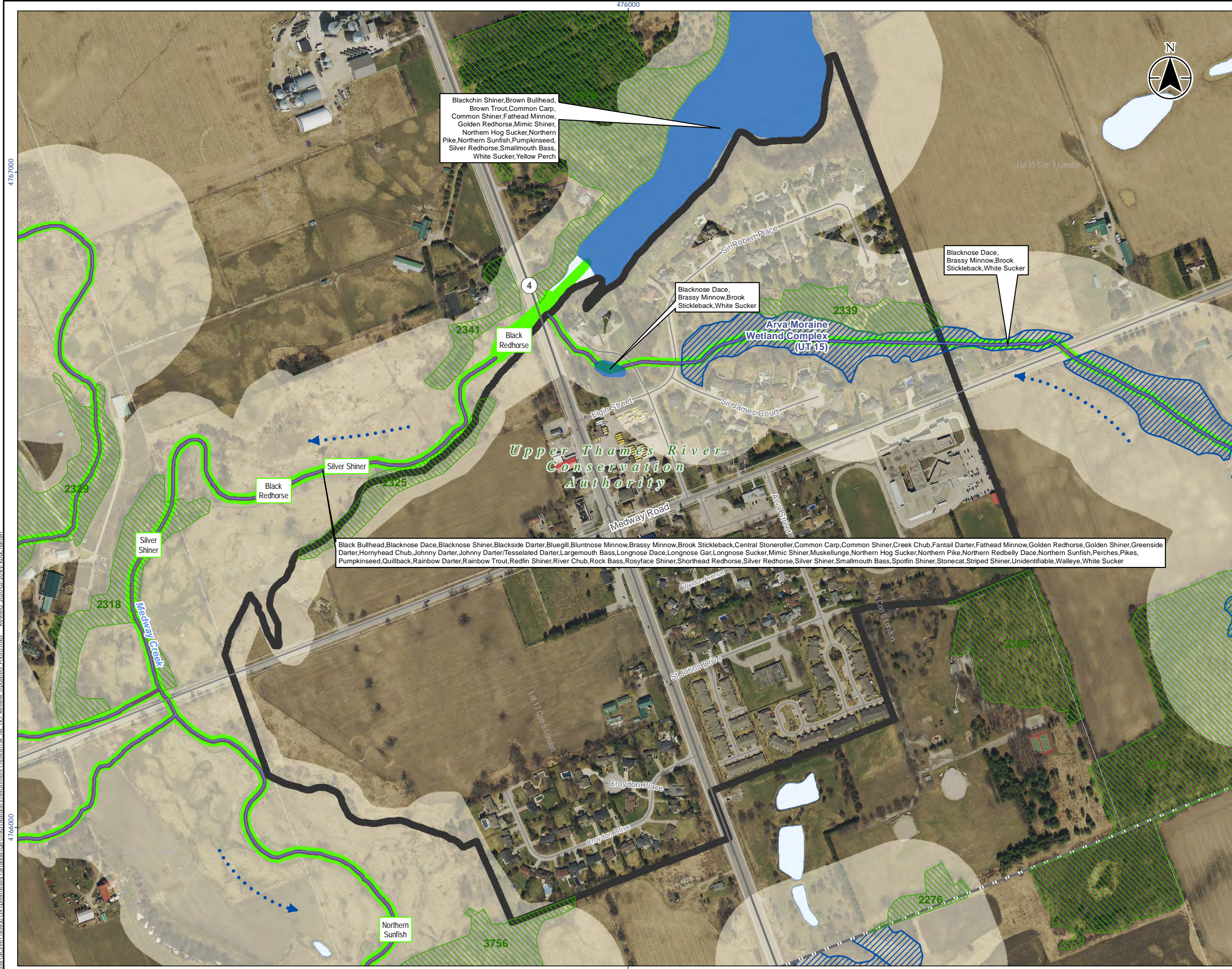
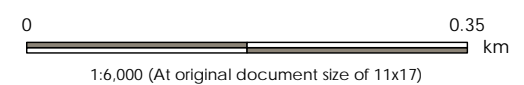


# **B.1 NATURAL ENVIRONMENT**

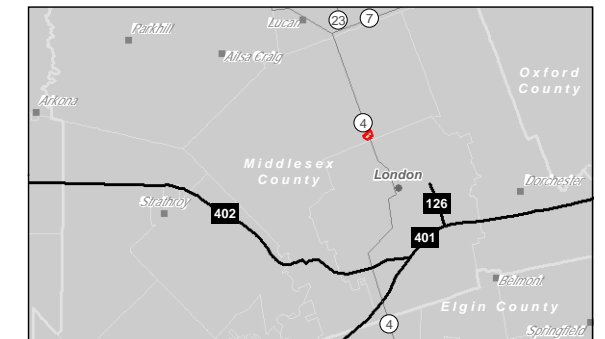
Middlesex Centre Settlement Area  
Stormwater Master Plan, July 2020



- Legend**
- Settlement Boundary
  - Regulated Area
  - Thermal Regime, Cold
  - Watercourse (Permanent)
  - Flow Direction
  - Significant Woodland
  - Conservation Area Administrative Boundary
  - Thermal Regime, Cold
  - Aquatic Species at Risk Distribution
  - Waterbody
  - Wetland, Provincially Significant
  - Lot
  - Municipal Boundary, Upper
  - Municipal Boundary, Lower



- Notes**
- Coordinate System: NAD 1983 UTM Zone 17N
  - Base features produced under license with the Ontario Ministry of Natural Resources and Forestry © Queen's Printer for Ontario, 2019.



Project Location: 165630134 REV4  
 Municipality of: Prepared by KDB on 2020-02-20  
 Technical Review by ABC on yyyy-mm-dd  
 Independent Review by ABC on yyyy-mm-dd

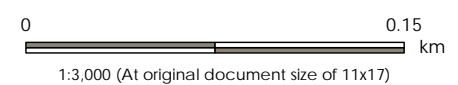
Client/Project:  
 MUNICIPALITY OF MIDDLESEX CENTRE  
 SETTLEMENT AREAS STORM WATER MASTER PLAN  
 MUNICIPAL CLASS ENVIRONMENTAL ASSESSMENT

Figure No.: **B1-1**  
 Title: **Background Data**  
 Arva

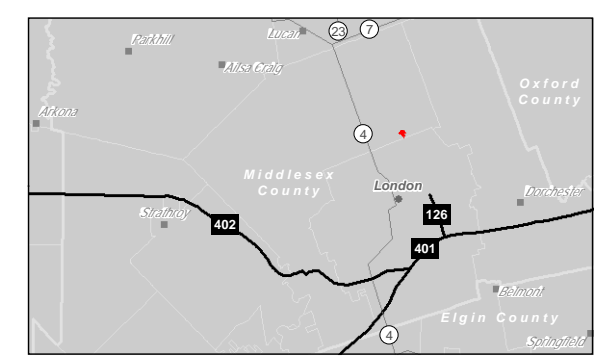
V:\0165630134\preliminary\analysis\GIS\Map\Environment\165630134\_NE\_LIQ\_Review\_Updated\_Photo.mxd - Revised\_2020-02-20 By kbvickhaman  
 4768000



- Legend**
- Settlement Boundary
  - Watercourse (Intermittent)
  - Watercourse (Permanent)
  - Flow Direction
  - Significant Woodland
  - Conservation Area Administrative Boundary
  - Waterbody
  - Lot
  - Municipal Boundary, Upper
  - Municipal Boundary, Lower
  - Regulated Area



- Notes**
1. Coordinate System: NAD 1983 UTM Zone 17N
  2. Base features produced under license with the Ontario Ministry of Natural Resources and Forestry © Queen's Printer for Ontario, 2019.



Project Location: 165630134 REV4  
 Municipality of: \_\_\_\_\_ Prepared by KDB on 2020-02-20  
 Technical Review by ABC on yyyy-mm-dd  
 Independent Review by ABC on yyyy-mm-dd

Client/Project:  
 MUNICIPALITY OF MIDDLESEX CENTRE  
 SETTLEMENT AREAS STORM WATER MASTER PLAN  
 MUNICIPAL CLASS ENVIRONMENTAL ASSESSMENT

Figure No.  
**B1-2**

Title  
 Background Data  
 Ballymote

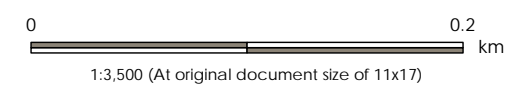
V:\01656\active\165630134\pres\mxa\analysis\ok\mxd\Natural\Environment\165630134\_NE\_LIQ\_Review\_Updated\_Photo.mxd - Revised\_2020-02-20 By kbvichanan 4774000



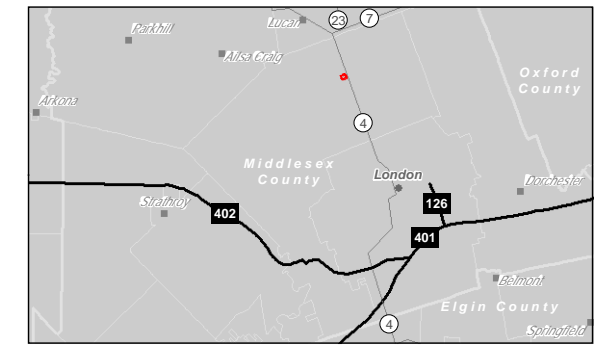
Black Bullhead, Blacknose Dace, Blacknose Shiner, Blackside Darter, Bluegill, Bluntnose Minnow, Brassy Minnow, Brook Stickleback, Carps and Minnows, Central Mudminnow, Central Stoneroller, Common Carp, Common Shiner, Creek Chub, Fantail Darter, Fathead Minnow, Golden Shiner, Greenside Darter, Hornyhead Chub, Johnny Darter, Johnny Darter/Tessellated Darter, Largemouth Bass, Least Darter, Mimic Shiner, Northern Hog Sucker, Northern Pearl Dace, Northern Pike, Northern Redbelly Dace, Pumpkinseed, Rainbow Darter, Rainbow Trout, Rock Bass, Rosyface Shiner, Striped Shiner, Suckers, White Sucker, Yellow Bullhead, Yellow Perch



- Legend
- Settlement Boundary
  - Thermal Regime, Cold
  - Watercourse (Permanent)
  - Flow Direction
  - Conservation Area Administrative Boundary
  - Aquatic Species at Risk Distribution
  - Lot
  - Municipal Boundary, Upper
  - Municipal Boundary, Lower
  - Regulated Area



- Notes
1. Coordinate System: NAD 1983 UTM Zone 17N
  2. Base features produced under license with the Ontario Ministry of Natural Resources and Forestry © Queen's Printer for Ontario, 2019.



Project Location: Municipality of Middlesex Centre  
 Prepared by KDB on 2020-02-20  
 Technical Review by ABC on yyyy-mm-dd  
 Independent Review by ABC on yyyy-mm-dd

Client/Project: MUNICIPALITY OF MIDDLESEX CENTRE  
 SETTLEMENT AREAS STORM WATER MASTER PLAN  
 MUNICIPAL CLASS ENVIRONMENTAL ASSESSMENT

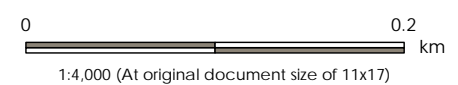
Figure No.: **B1-3**

Title: **Background Data**  
 Birr

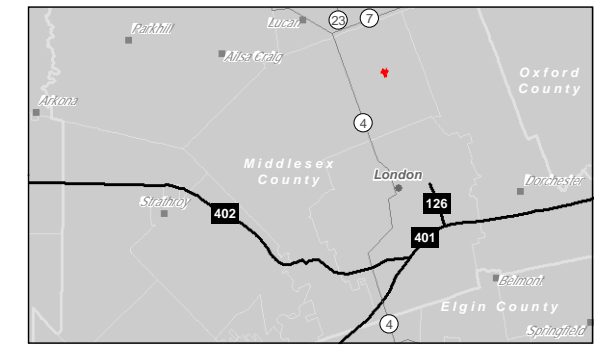
V:\01656\active\165630134\pres\mxa\analysis\kbs\mxd\Natural\Environment\165630134\_NE\_LIO\_Review\_Updated\_Photo.mxd - Revised: 2020-02-20 By kbvickerman



- Legend
- Settlement Boundary
  - Thermal Regime, Cold
  - Significant Woodland
  - Conservation Area Administrative Boundary
  - Lot
  - Municipal Boundary, Upper
  - Municipal Boundary, Lower
  - Regulated Area



- Notes
1. Coordinate System: NAD 1983 UTM Zone 17N
  2. Base features produced under license with the Ontario Ministry of Natural Resources and Forestry © Queen's Printer for Ontario, 2019.



Black Bullhead, Blacknose Dace, Blacknose Shiner, Blackside Darter, Bluegill, Bluntnose Minnow, Brassy Minnow, Brook Stickleback, Carps and Minnows, Central Mudminnow, Central Stoneroller, Common Carp, Common Shiner, Creek Chub, Fantail Darter, Fathead Minnow, Golden Shiner, Greenside Darter, Hornyhead Chub, Johnny Darter, Johnny Darter/Tesselated Darter, Largemouth Bass, Least Darter, Mimic Shiner, Northern Hog Sucker, Northern Pearl Dace, Northern Pike, Northern Redbelly Dace, Pumpkinseed, Rainbow Darter, Rainbow Trout, Rock Bass, Rosyface Shiner, Striped Shiner, Suckers, White Sucker, Yellow Bullhead, Yellow Perch

Project Location: 165630134 REV4  
 Municipality of Middlesex Centre  
 Prepared by KDB on 2020-02-20  
 Technical Review by ABC on yyyy-mm-dd  
 Independent Review by ABC on yyyy-mm-dd

Client/Project:  
 MUNICIPALITY OF MIDDLESEX CENTRE  
 SETTLEMENT AREAS STORM WATER MASTER PLAN  
 MUNICIPAL CLASS ENVIRONMENTAL ASSESSMENT

Figure No.  
**B1- 4**

Title  
 Background Data  
 Bryanston

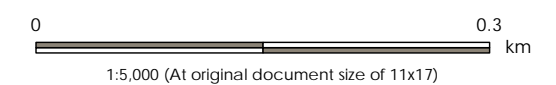
465000

465000

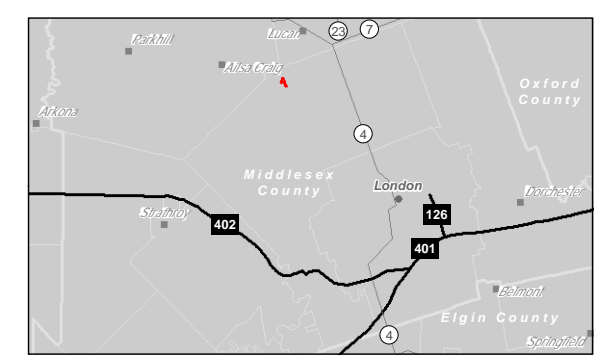
V:\01656\active\165630134\preliminary\analysis\mxd\Natural Environment\165630134\_NE\_LIQ\_Review\_Updated\_Photo.mxd - Revised\_2020-02-20 By: kbvichanan



- Legend
- Settlement Boundary
  - Thermal Regime, Cold
  - Watercourse (Permanent)
  - Flow Direction
  - Significant Woodland
  - Conservation Area Administrative Boundary
  - Thermal Regime, Cold
  - Waterbody
  - Lot
  - Municipal Boundary, Upper
  - Municipal Boundary, Lower
  - Regulated Area



- Notes
1. Coordinate System: NAD 1983 UTM Zone 17N
  2. Base features produced under license with the Ontario Ministry of Natural Resources and Forestry © Queen's Printer for Ontario, 2019.



Project Location: Municipality of Ausable Bayfield  
 Prepared by KDB on 2020-02-20  
 Technical Review by ABC on yyyy-mm-dd  
 Independent Review by ABC on yyyy-mm-dd

Client/Project: MUNICIPALITY OF MIDDLESEX CENTRE  
 SETTLEMENT AREAS STORM WATER MASTER PLAN  
 MUNICIPAL CLASS ENVIRONMENTAL ASSESSMENT

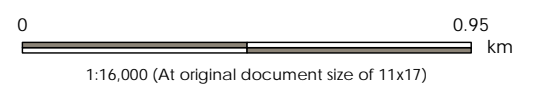
Figure No.: **B1-5**

Title: Background Data  
 Denfield

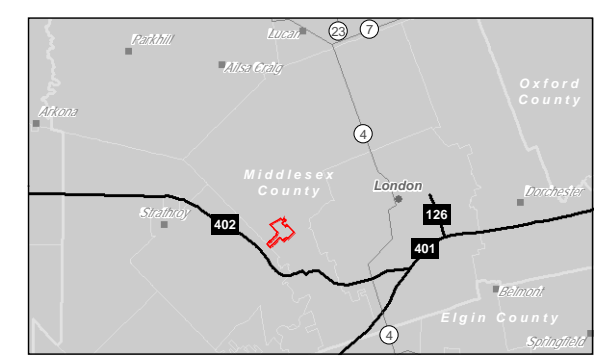




- Legend**
- Settlement Boundary
  - Thermal Regime, Cold
  - Railway
  - Watercourse (Intermittent)
  - Watercourse (Permanent)
  - Flow Direction
  - ANSI, Life Science
  - Significant Woodland
  - Conservation Area Administrative Boundary
  - Provincial Park
  - Thermal Regime, Cold
  - Thermal Regime, Warm
  - Aquatic Species at Risk Distribution
  - Aquatic Species at Risk Critical Habitat
  - Waterbody
  - Wetland, Provincially Significant
  - Lot
  - Municipal Boundary, Upper
  - Municipal Boundary, Lower
  - Regulated Area



- Notes**
1. Coordinate System: NAD 1983 UTM Zone 17N
  2. Base features produced under license with the Ontario Ministry of Natural Resources and Forestry © Queen's Printer for Ontario, 2019.



Project Location: Municipality of Komoka  
 Prepared by KDB on 2020-02-20  
 Technical Review by ABC on yyyy-mm-dd  
 Independent Review by ABC on yyyy-mm-dd

Client/Project: MUNICIPALITY OF MIDDLESEX CENTRE  
 SETTLEMENT AREAS STORM WATER MASTER PLAN  
 MUNICIPAL CLASS ENVIRONMENTAL ASSESSMENT

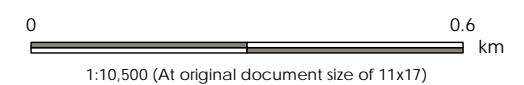
Figure No. **B1-7**

Title: **Background Data  
 Komoka**

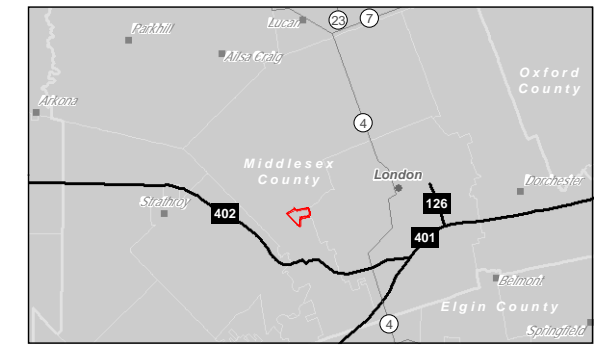




- Legend**
- Settlement Boundary
  - Thermal Regime, Cold
  - Railway
  - Watercourse (Intermittent)
  - Watercourse (Permanent)
  - Flow Direction
  - ANSI, Life Science
  - Significant Woodland
  - Conservation Area Administrative Boundary
  - Provincial Park
  - Thermal Regime, Warm
  - Aquatic Species at Risk Distribution
  - Aquatic Species at Risk Critical Habitat
  - Waterbody
  - Wetland, Provincially Significant
  - Lot
  - Municipal Boundary, Upper
  - Municipal Boundary, Lower
  - Regulated Area



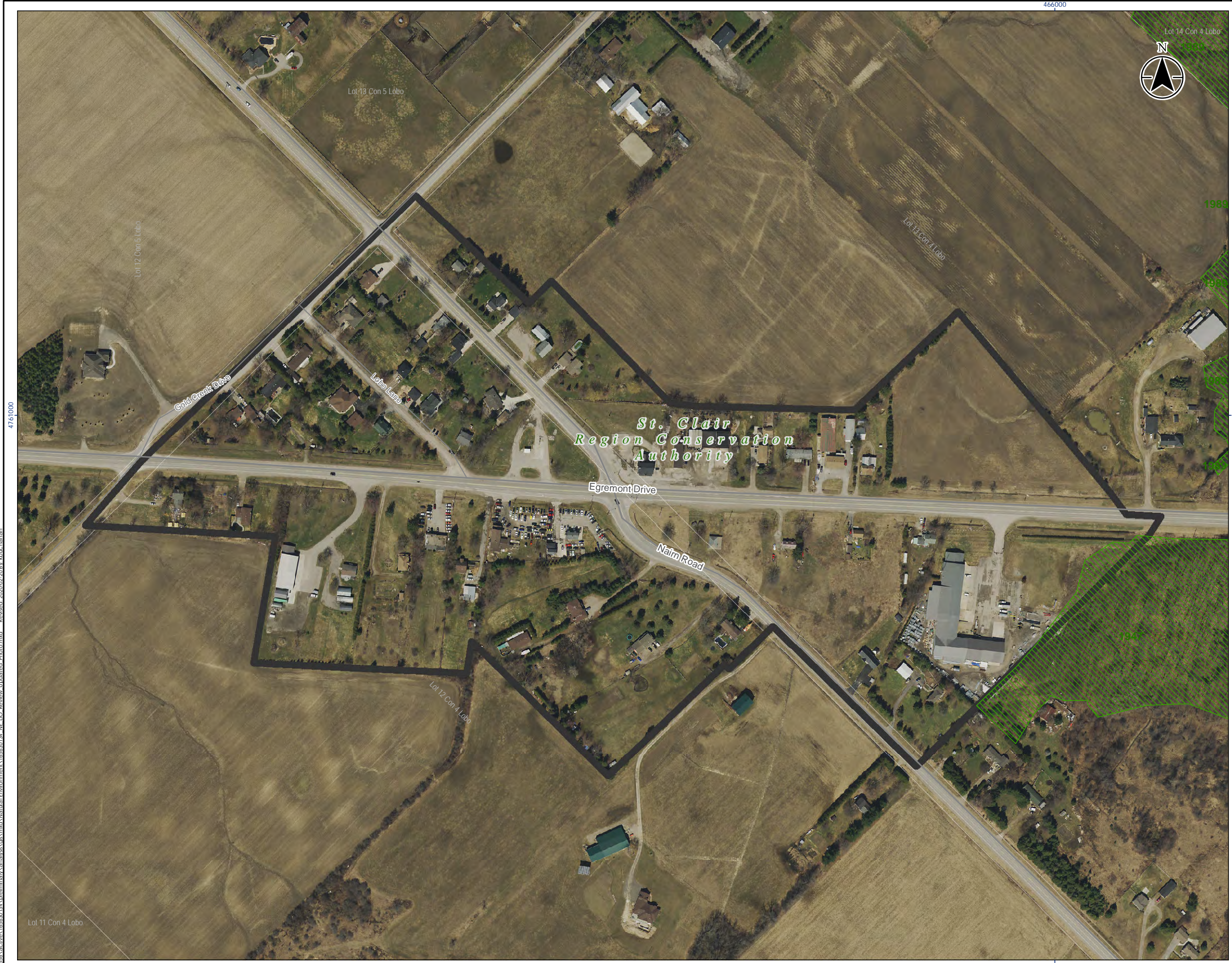
- Notes**
1. Coordinate System: NAD 1983 UTM Zone 17N
  2. Base features produced under license with the Ontario Ministry of Natural Resources and Forestry © Queen's Printer for Ontario, 2019.



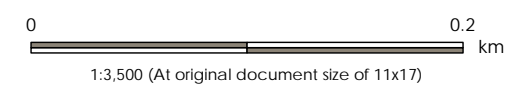
Project Location: 165630134 REV4  
 Municipality of: Prepared by KDB on 2020-02-20  
 Technical Review by ABC on yyyy-mm-dd  
 Independent Review by ABC on yyyy-mm-dd

Client/Project:  
**MUNICIPALITY OF MIDDLESEX CENTRE**  
**SETTLEMENT AREAS STORM WATER MASTER PLAN**  
**MUNICIPAL CLASS ENVIRONMENTAL ASSESSMENT**

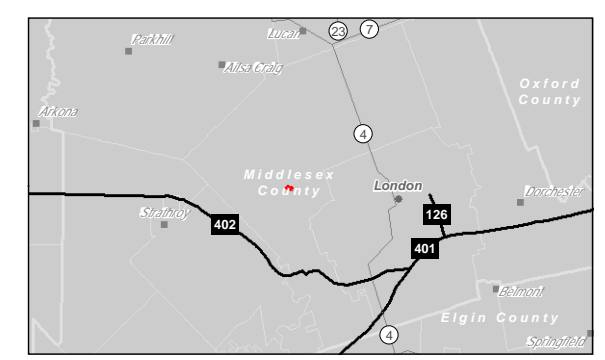
Figure No.:  
**B1-8**  
 Title:  
**Background Data**  
**Kilworth**



- Legend
- Settlement Boundary
  - Significant Woodland
  - Conservation Area Administrative Boundary
  - Lot
  - Municipal Boundary, Upper
  - Municipal Boundary, Lower



- Notes
1. Coordinate System: NAD 1983 UTM Zone 17N
  2. Base features produced under license with the Ontario Ministry of Natural Resources and Forestry © Queen's Printer for Ontario, 2019.



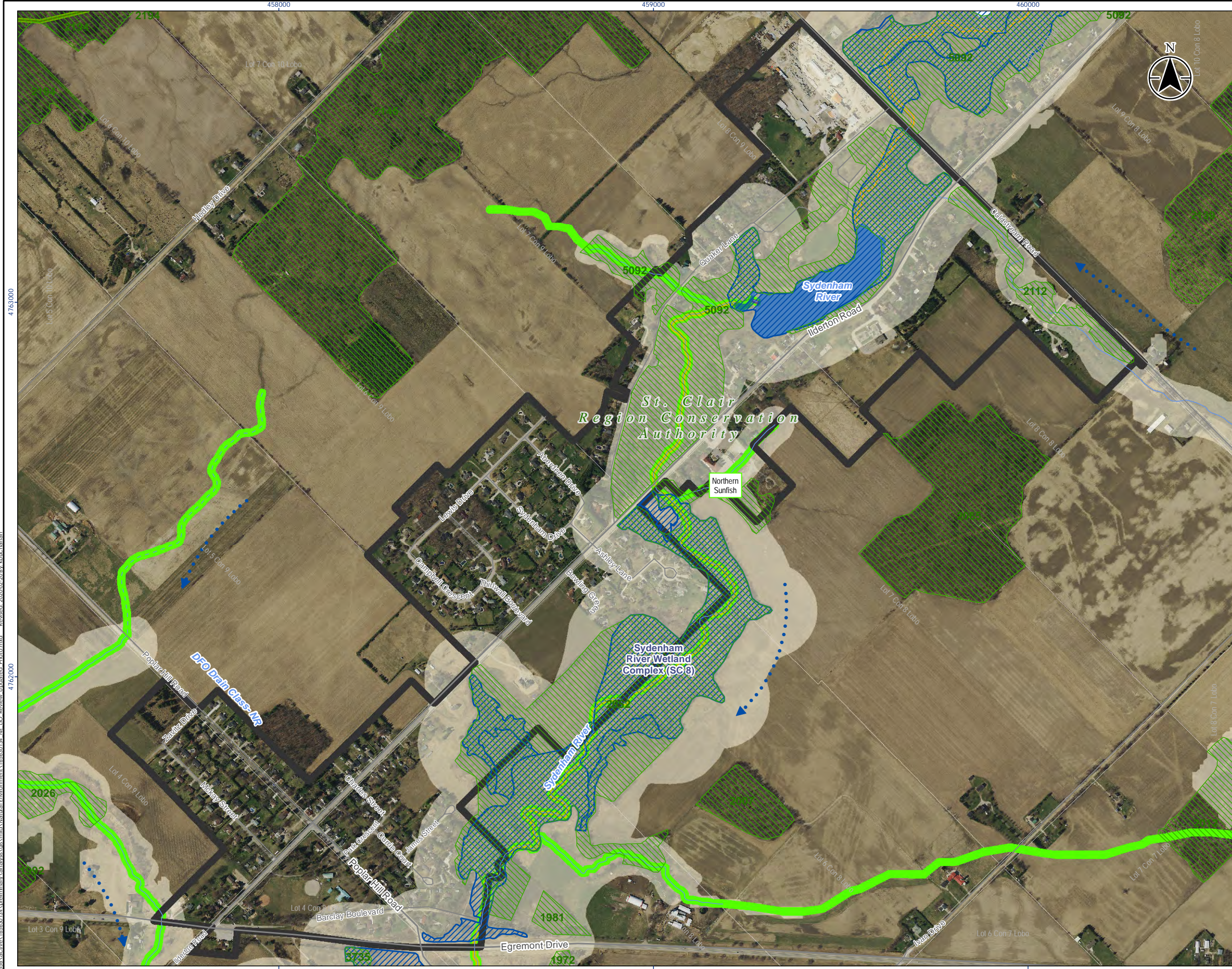
Project Location: 165630134 REV4  
 Municipality of: Prepared by KDB on 2020-02-20  
 Technical Review by ABC on yyyy-mm-dd  
 Independent Review by ABC on yyyy-mm-dd

Client/Project:  
 MUNICIPALITY OF MIDDLESEX CENTRE  
 SETTLEMENT AREAS STORM WATER MASTER PLAN  
 MUNICIPAL CLASS ENVIRONMENTAL ASSESSMENT

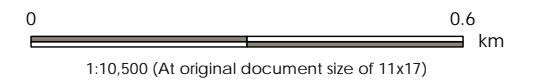
Figure No.:  
**B1-9**  
 Title:  
 Background Data  
 Lobo

V:\0165630134\0165630134\0165630134\0165630134\_Natural\Environment\165630134\_NE\_L10\_Review\_Updated\_Photo.mxd - Revised: 2020-02-20 By: kbvicharan

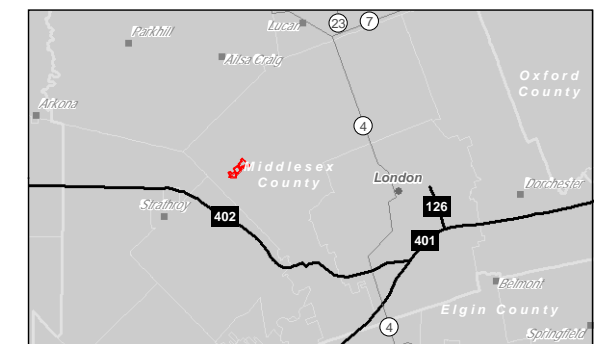




- Legend**
- Settlement Boundary
  - Thermal Regime, Cold
  - Thermal Regime, Warm
  - Watercourse (Intermittent)
  - Watercourse (Permanent)
  - Flow Direction
  - Significant Woodland
  - Conservation Area Administrative Boundary
  - Thermal Regime, Cold
  - Aquatic Species at Risk Distribution
  - Waterbody
  - Wetland, Provincially Significant
  - Lot
  - Municipal Boundary, Upper
  - Municipal Boundary, Lower
  - Regulated Area



- Notes**
1. Coordinate System: NAD 1983 UTM Zone 17N
  2. Base features produced under license with the Ontario Ministry of Natural Resources and Forestry © Queen's Printer for Ontario, 2019.



Project Location: 165630134 REV4  
 Municipality of: Prepared by KDB on 2020-02-20  
 Technical Review by ABC on yyyy-mm-dd  
 Independent Review by ABC on yyyy-mm-dd

Client/Project:  
**MUNICIPALITY OF MIDDLESEX CENTRE**  
**SETTLEMENT AREAS STORM WATER MASTER PLAN**  
**MUNICIPAL CLASS ENVIRONMENTAL ASSESSMENT**

Figure No.  
**B1-11**

Title  
**Background Data**  
**Poplar Hill - Coldstream**

V:\0165630134\0165630134\0165630134\0165630134\_Natural\Environment\165630134\_REV4\_Review\_Updated\_Photo.mxd - Revised: 2020-02-20 By: kbvicharan

Disclaimer: Stantec assumes no responsibility for data supplied in electronic format. The recipient accepts full responsibility for verifying the accuracy and completeness of the data. The recipient releases Stantec, its officers, employees, consultants and agents, from any and all claims arising in any way from the content or provision of the data.