

## **B.2 EXISTING DRAINAGE CONDITIONS**

Middlesex Centre Settlement Area  
Stormwater Master Plan, July 2020

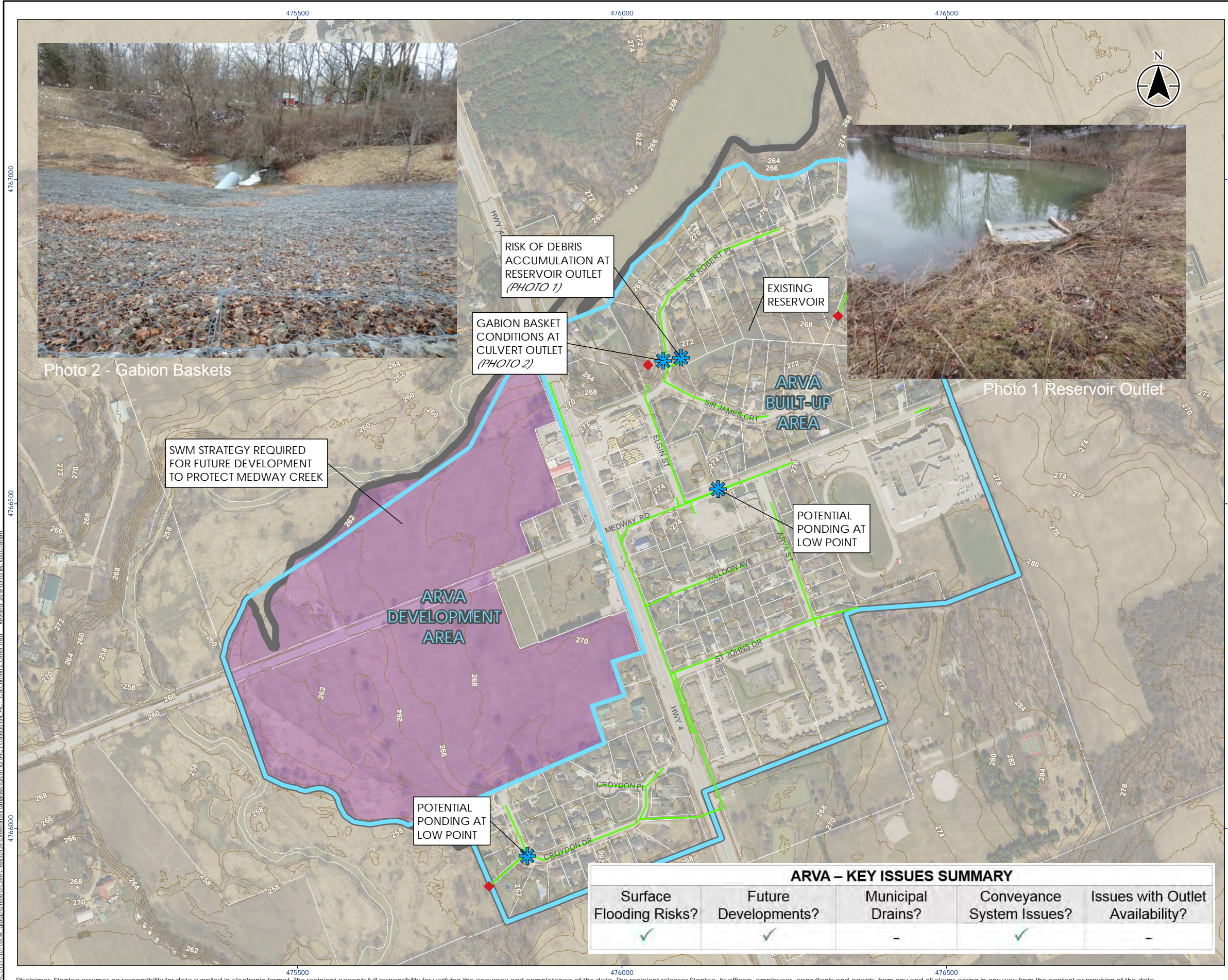
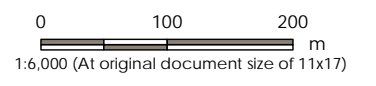


Photo 2 - Gabion Baskets

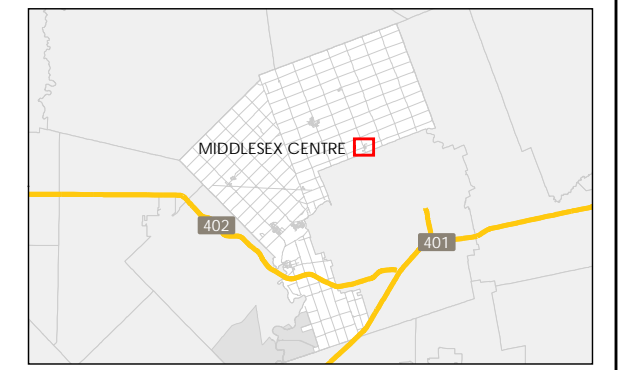
Photo 1 Reservoir Outlet



- Legend
- ◆ Outlet
  - Storm Sewer
  - Municipal Drain
  - Perforated Subdrain
  - Elevation Contour
  - Development Area
  - Storm Catchment Area
  - Settlement Boundary



- Notes
1. Coordinate System: NAD 1983 UTM Zone 17N
  2. Parcels © Teranet Enterprises Inc. and its suppliers. All rights reserved. Not a plan of survey.
  3. 2015 orthoimagery © 2018 of the Queen's Printer for Ontario. All rights reserved.



Project Location: Municipality of Middlesex Centre  
 165630134 REVA  
 Prepared by KDB on 2018-05-03

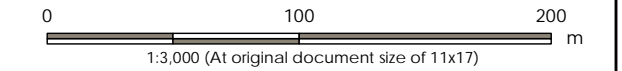
Client/Project: MUNICIPALITY OF MIDDLESEX CENTRE  
 STORM DRAINAGE MASTER PLAN MUNICIPAL CLASS ENVIRONMENTAL ASSESSMENT

Figure No.: **B2-1**  
 Title: Existing Drainage Overview  
 Arva

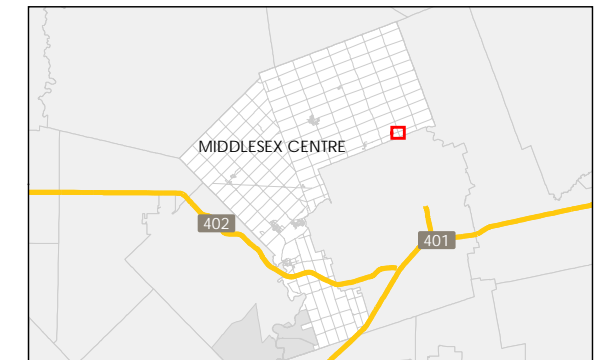
ARVA – KEY ISSUES SUMMARY				
Surface Flooding Risks?	Future Developments?	Municipal Drains?	Conveyance System Issues?	Issues with Outlet Availability?
✓	✓	-	✓	-

Legend

- ◆ Outlet
- Storm Sewer
- Municipal Drain
- Perforated Subdrain
- Elevation Contour
- Development Area
- Storm Catchment Area
- Settlement Boundary



- Notes
1. Coordinate System: NAD 1983 UTM Zone 17N
  2. Parcels © Teranet Enterprises Inc. and its suppliers. All rights reserved. Not a plan of survey.
  3. 2015 orthoimagery © 2018 of the Queen's Printer for Ontario. All rights reserved.



Project Location: Municipality of Middlesex Centre  
 165630134 REVA  
 Prepared by KDB on 2018-05-03

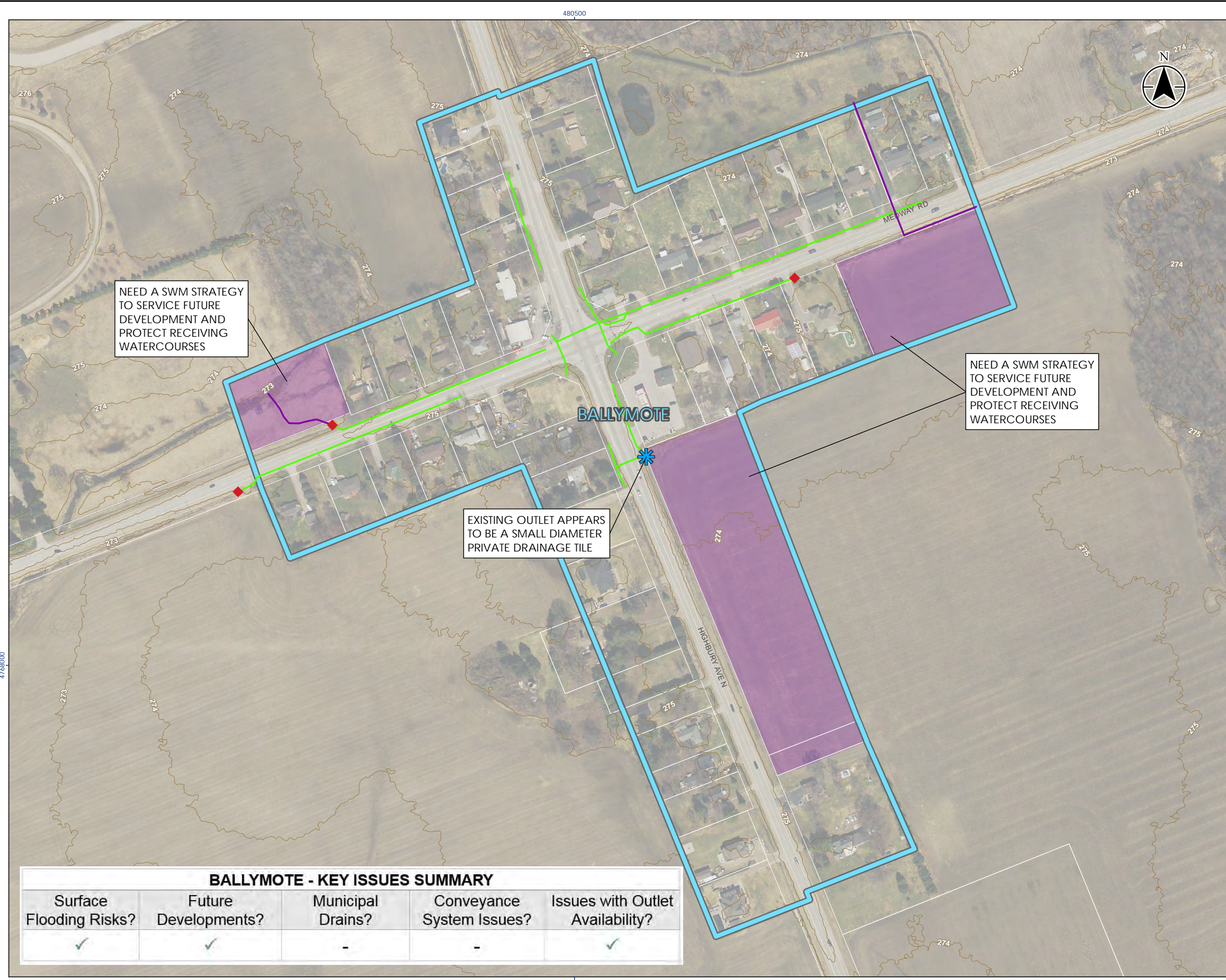
Client/Project:  
**MUNICIPALITY OF MIDDLESEX CENTRE**  
**STORM DRAINAGE MASTER PLAN MUNICIPAL CLASS ENVIRONMENTAL ASSESSMENT**

Figure No.

**B2-2**

Title

**Existing Drainage Overview**  
**Ballymote**



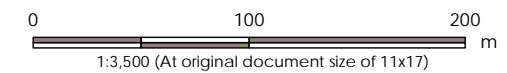
**BALLYMOTE - KEY ISSUES SUMMARY**

Surface Flooding Risks?	Future Developments?	Municipal Drains?	Conveyance System Issues?	Issues with Outlet Availability?
✓	✓	-	-	✓

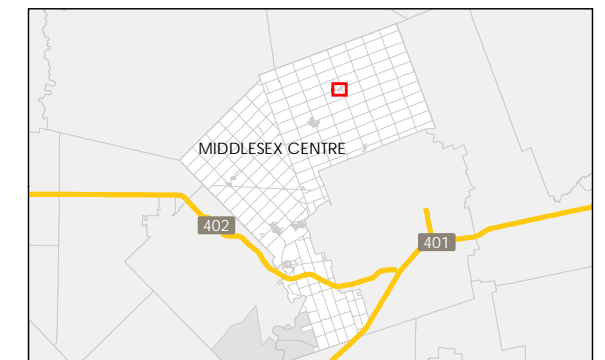
\\C:\p1\7\001\work\_group\0165630134\workspace\165630134\workspace\165630134\BCL\_Catchments\_Other.mxd - Revised: 2018-05-03 By: kbuchanan  
 4768000  
 480500  
 4768000

Legend

- Outlet
- Storm Sewer
- Municipal Drain
- Perforated Subdrain
- Elevation Contour
- Development Area
- Storm Catchment Area
- Settlement Boundary



- Notes
1. Coordinate System: NAD 1983 UTM Zone 17N
  2. Parcels © Teranet Enterprises Inc. and its suppliers. All rights reserved. Not a plan of survey.
  3. 2015 orthoimagery © 2018 of the Queen's Printer for Ontario. All rights reserved.

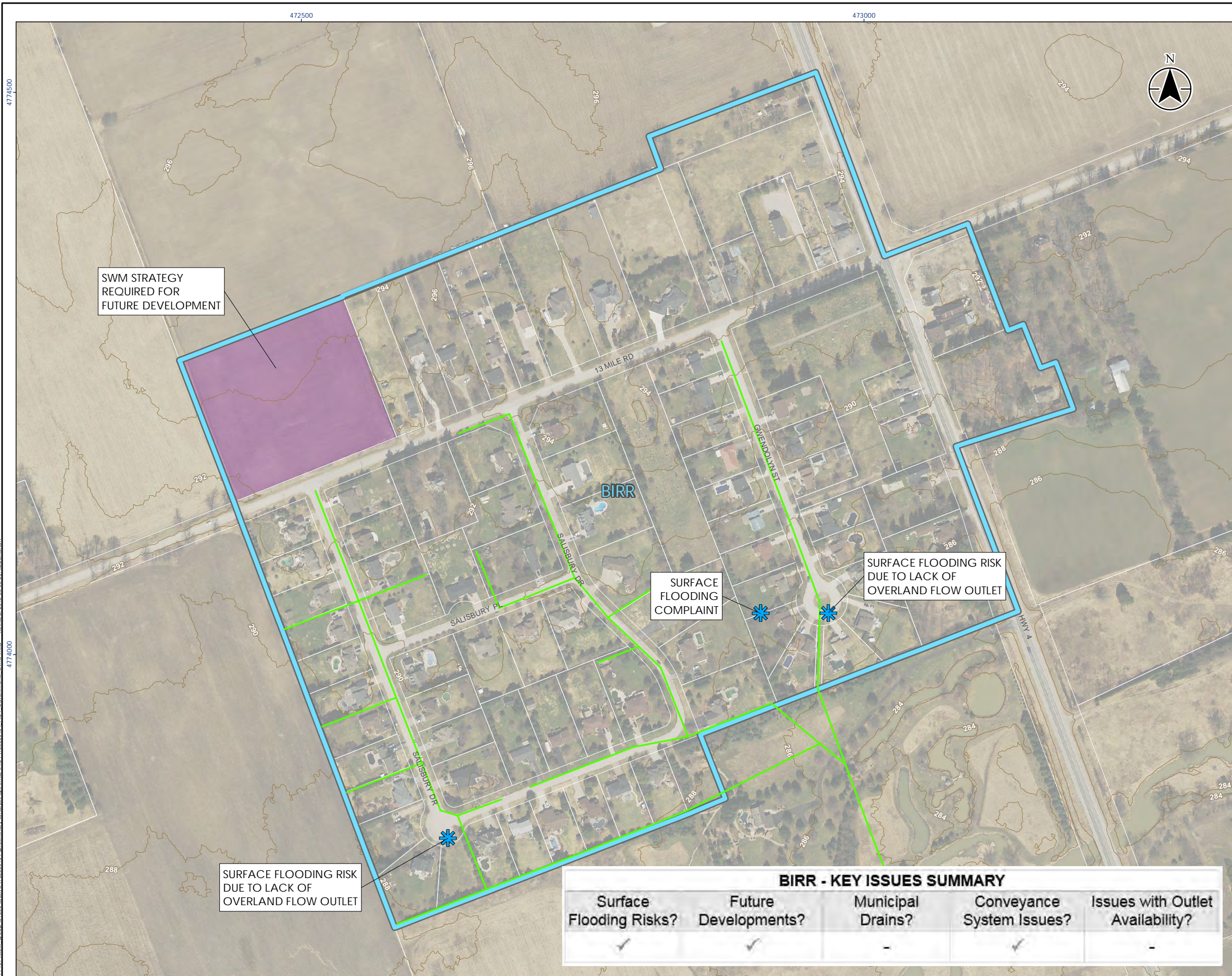


Project Location: Municipality of Middlesex Centre  
 165630134 REVA  
 Prepared by KDB on 2018-05-03

Client/Project: MUNICIPALITY OF MIDDLESEX CENTRE  
 STORM DRAINAGE MASTER PLAN MUNICIPAL CLASS ENVIRONMENTAL ASSESSMENT

Figure No.: **B2-3**

Title: Existing Drainage Overview  
 Birr

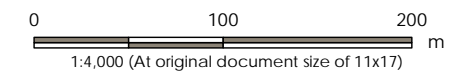


\\c:\p1\7\001\work\_group\0165630134\environmental\mxd\165630134\_BCL\_Catchments\_Other.mxd - Revised: 2018-05-03 By: kbuchanan

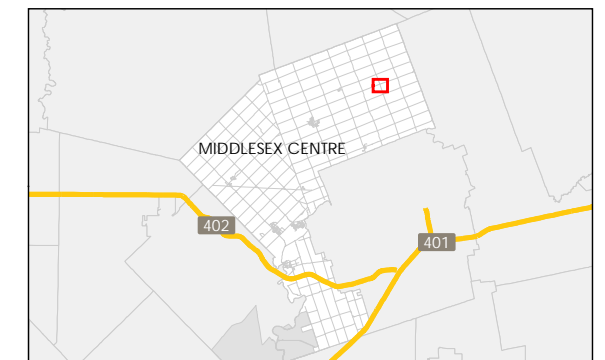
BIRR - KEY ISSUES SUMMARY				
Surface Flooding Risks?	Future Developments?	Municipal Drains?	Conveyance System Issues?	Issues with Outlet Availability?
✓	✓	-	✓	-

Legend

- Outlet
- Storm Sewer
- Municipal Drain
- Perforated Subdrain
- Elevation Contour
- Development Area
- New Homes
- Storm Catchment Area
- Settlement Boundary



- Notes
1. Coordinate System: NAD 1983 UTM Zone 17N
  2. Parcels © Teranet Enterprises Inc. and its suppliers. All rights reserved. Not a plan of survey.
  3. 2015 orthoimagery © 2018 of the Queen's Printer for Ontario. All rights reserved.



Project Location: Municipality of Middlesex Centre  
 165630134 REVA  
 Prepared by KDB on 2018-05-03

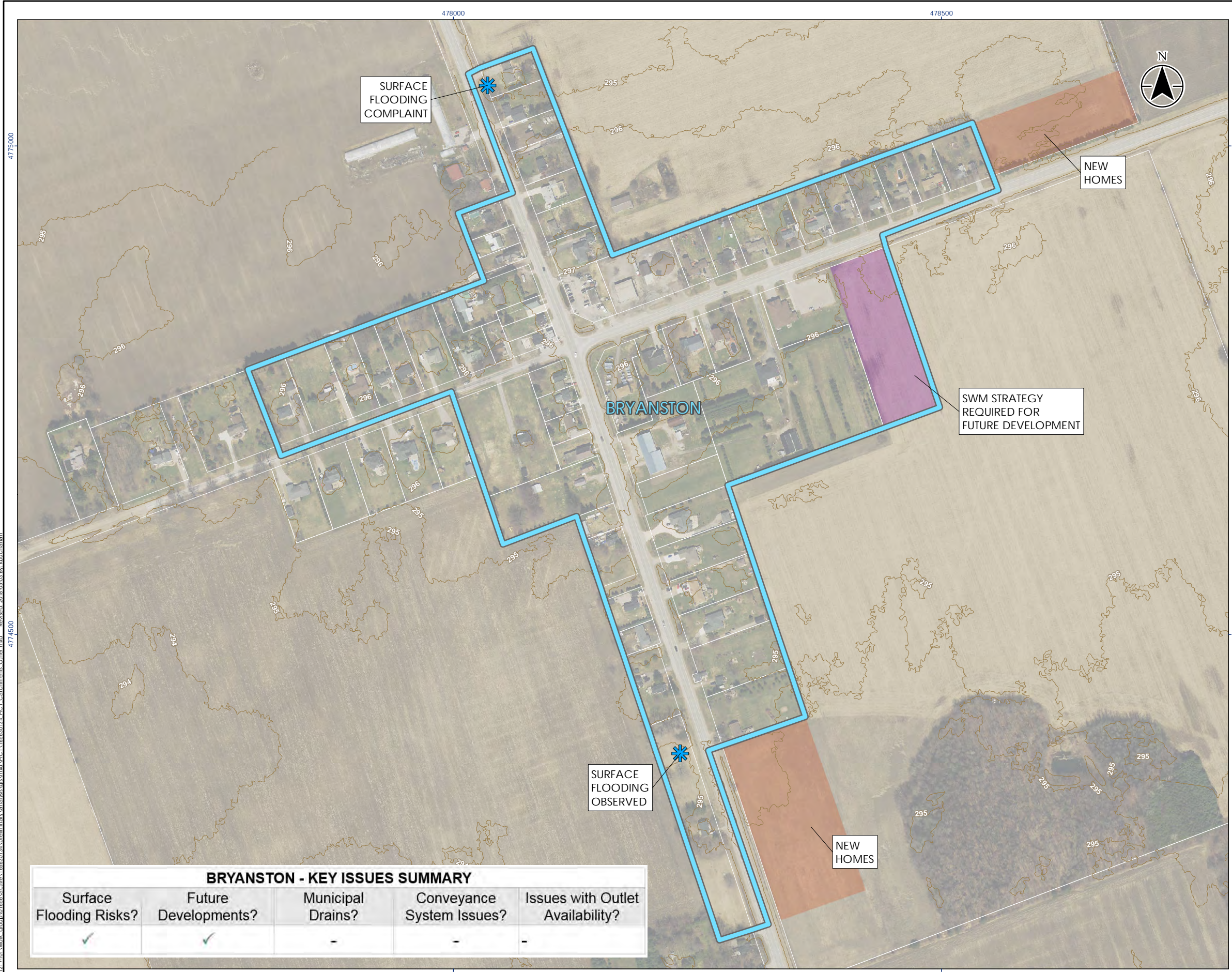
Client/Project: MUNICIPALITY OF MIDDLESEX CENTRE  
 STORM DRAINAGE MASTER PLAN MUNICIPAL CLASS  
 ENVIRONMENTAL ASSESSMENT

Figure No.

**B2-4**

Title

Existing Drainage Overview  
 Bryanston

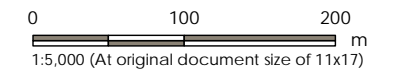


**BRYANSTON - KEY ISSUES SUMMARY**

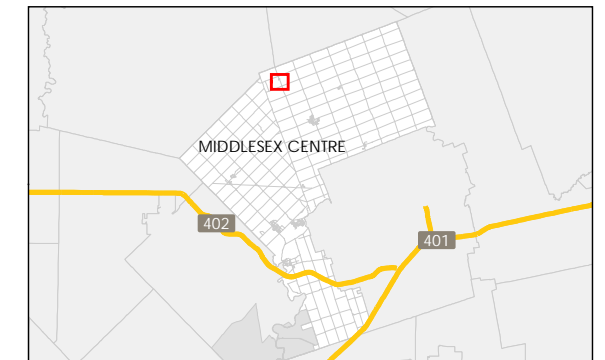
Surface Flooding Risks?	Future Developments?	Municipal Drains?	Conveyance System Issues?	Issues with Outlet Availability?
✓	✓	-	-	-

Legend

- Outlet
- Storm Sewer
- Municipal Drain
- Perforated Subdrain
- Elevation Contour
- Development Area
- Storm Catchment Area
- Settlement Boundary



- Notes
1. Coordinate System: NAD 1983 UTM Zone 17N
  2. Parcels © Teranet Enterprises Inc. and its suppliers. All rights reserved. Not a plan of survey.
  3. 2015 orthoimagery © 2018 of the Queen's Printer for Ontario. All rights reserved.



Project Location: Municipality of Middlesex Centre  
 Prepared by KDB on 2018-05-03  
 165630134 REVA

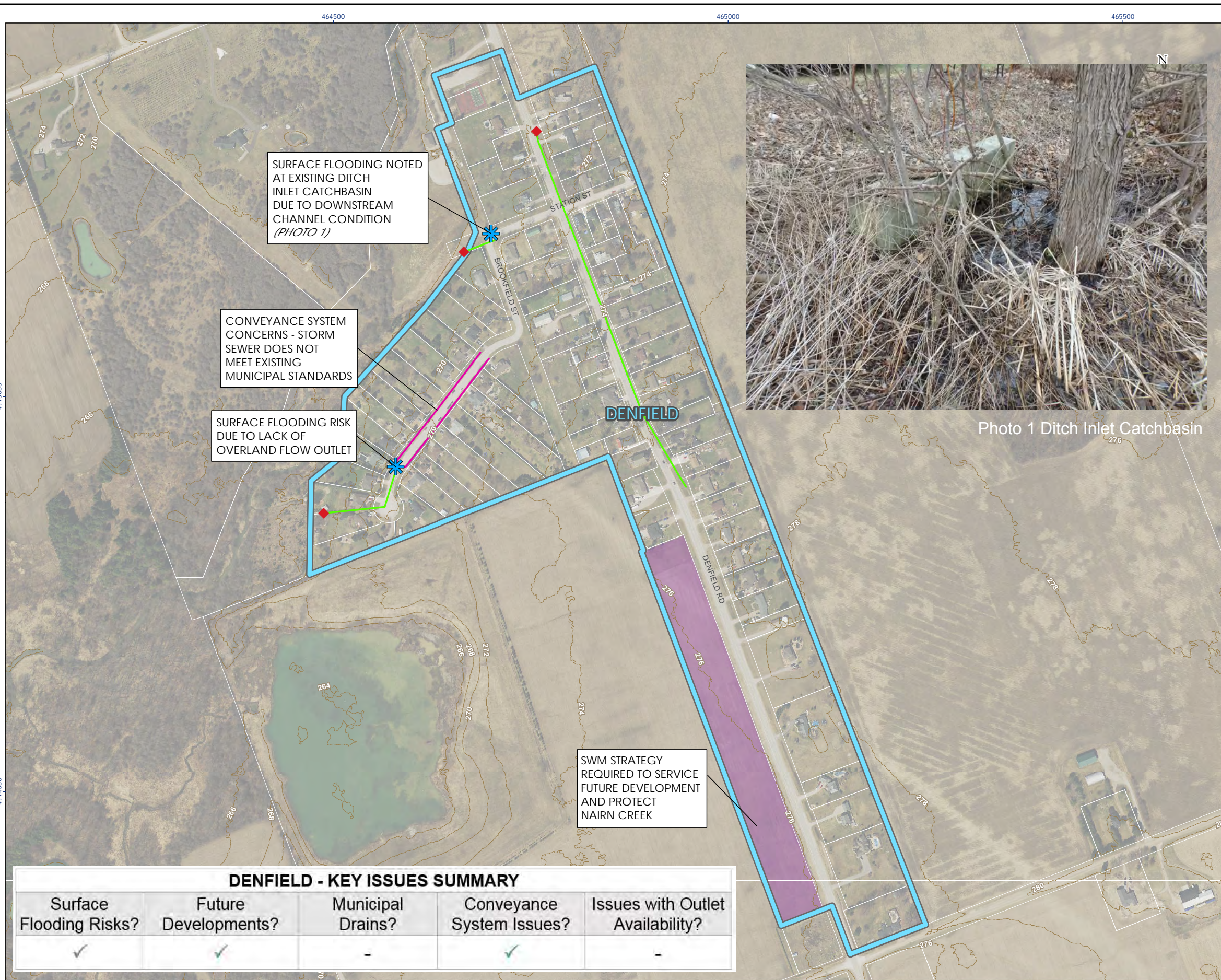
Client/Project: MUNICIPALITY OF MIDDLESEX CENTRE  
 STORM DRAINAGE MASTER PLAN MUNICIPAL CLASS ENVIRONMENTAL ASSESSMENT

Figure No. **B2-5**

Title: Existing Drainage Overview  
 Denfield



Photo 1 Ditch Inlet Catchbasin



SURFACE FLOODING NOTED AT EXISTING DITCH INLET CATCHBASIN DUE TO DOWNSTREAM CHANNEL CONDITION (PHOTO 1)

CONVEYANCE SYSTEM CONCERNS - STORM SEWER DOES NOT MEET EXISTING MUNICIPAL STANDARDS

SURFACE FLOODING RISK DUE TO LACK OF OVERLAND FLOW OUTLET

SWM STRATEGY REQUIRED TO SERVICE FUTURE DEVELOPMENT AND PROTECT NAIRN CREEK

**DENFIELD - KEY ISSUES SUMMARY**

Surface Flooding Risks?	Future Developments?	Municipal Drains?	Conveyance System Issues?	Issues with Outlet Availability?
✓	✓	-	✓	-

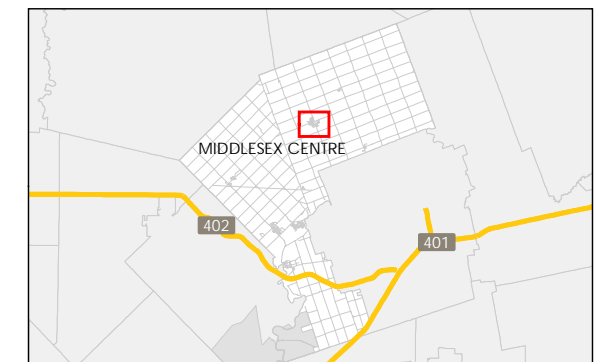
\C:\p1\217\001\work\_group\0165630134\municipal\_class\env\p1\165630134\_P01\_Catchments\_018.mxd - Revised: 2018-05-03 By: kbuchanan

Legend

- Outlet
- Storm Sewer
- Municipal Drain
- Perforated Subdrain
- Elevation Contour
- Development Area
- Storm Catchment Area
- Settlement Boundary

0 100 200 m  
1:10,500 (At original document size of 11x17)

- Notes
1. Coordinate System: NAD 1983 UTM Zone 17N
  2. Parcels © Teranet Enterprises Inc. and its suppliers. All rights reserved. Not a plan of survey.
  3. 2015 orthoimagery © 2018 of the Queen's Printer for Ontario. All rights reserved.

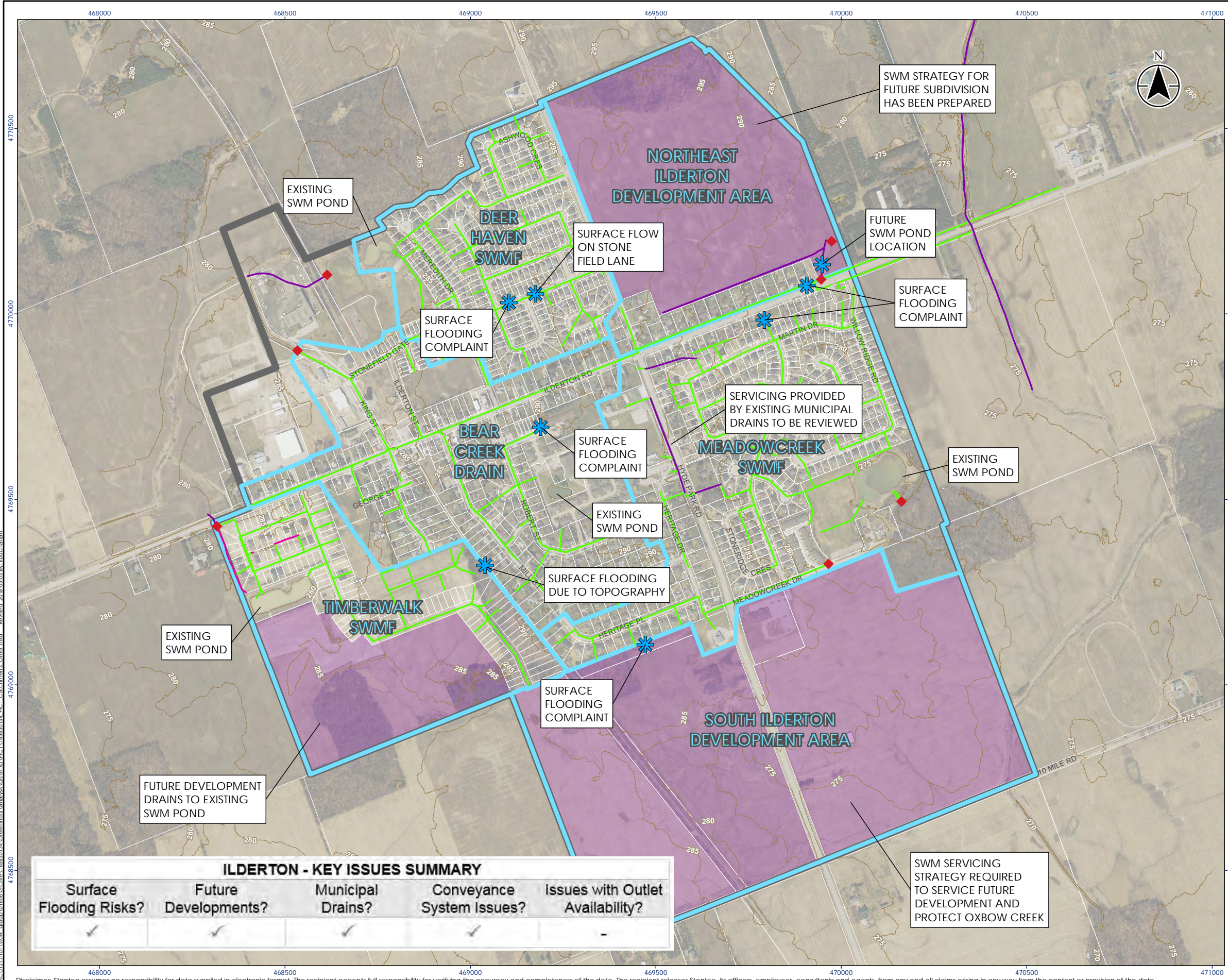


Project Location: Municipality of Middlesex Centre  
 165630134 REVA  
 Prepared by KDB on 2018-05-03

Client/Project: MUNICIPALITY OF MIDDLESEX CENTRE  
 STORM DRAINAGE MASTER PLAN MUNICIPAL CLASS ENVIRONMENTAL ASSESSMENT

Figure No. **B2-6**

Title: Existing Drainage Overview Ilderton



**ILBERTON - KEY ISSUES SUMMARY**

Surface Flooding Risks?	Future Developments?	Municipal Drains?	Conveyance System Issues?	Issues with Outlet Availability?
✓	✓	✓	✓	-

SWM SERVICING STRATEGY REQUIRED TO SERVICE FUTURE DEVELOPMENT AND PROTECT OXBOW CREEK

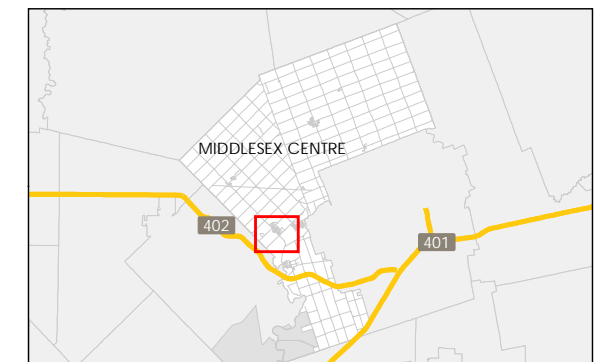
C:\cfd\217\001\work\_group\0165630134\mxd\main\mxd\p\p\165630134\_P01\_Catchments\_01.mxd - Revised: 2018-05-03 By: kbuchanan

Legend

- Outlet
- Storm Sewer
- Municipal Drain
- Perforated Subdrain
- Elevation Contour
- Development Area
- Storm Catchment Area
- Settlement Boundary

0 100 200  
m  
1:16,000 (At original document size of 11x17)

- Notes
1. Coordinate System: NAD 1983 UTM Zone 17N
  2. Parcels © Teranet Enterprises Inc. and its suppliers. All rights reserved. Not a plan of survey.
  3. 2015 orthoimagery © 2018 of the Queen's Printer for Ontario. All rights reserved.

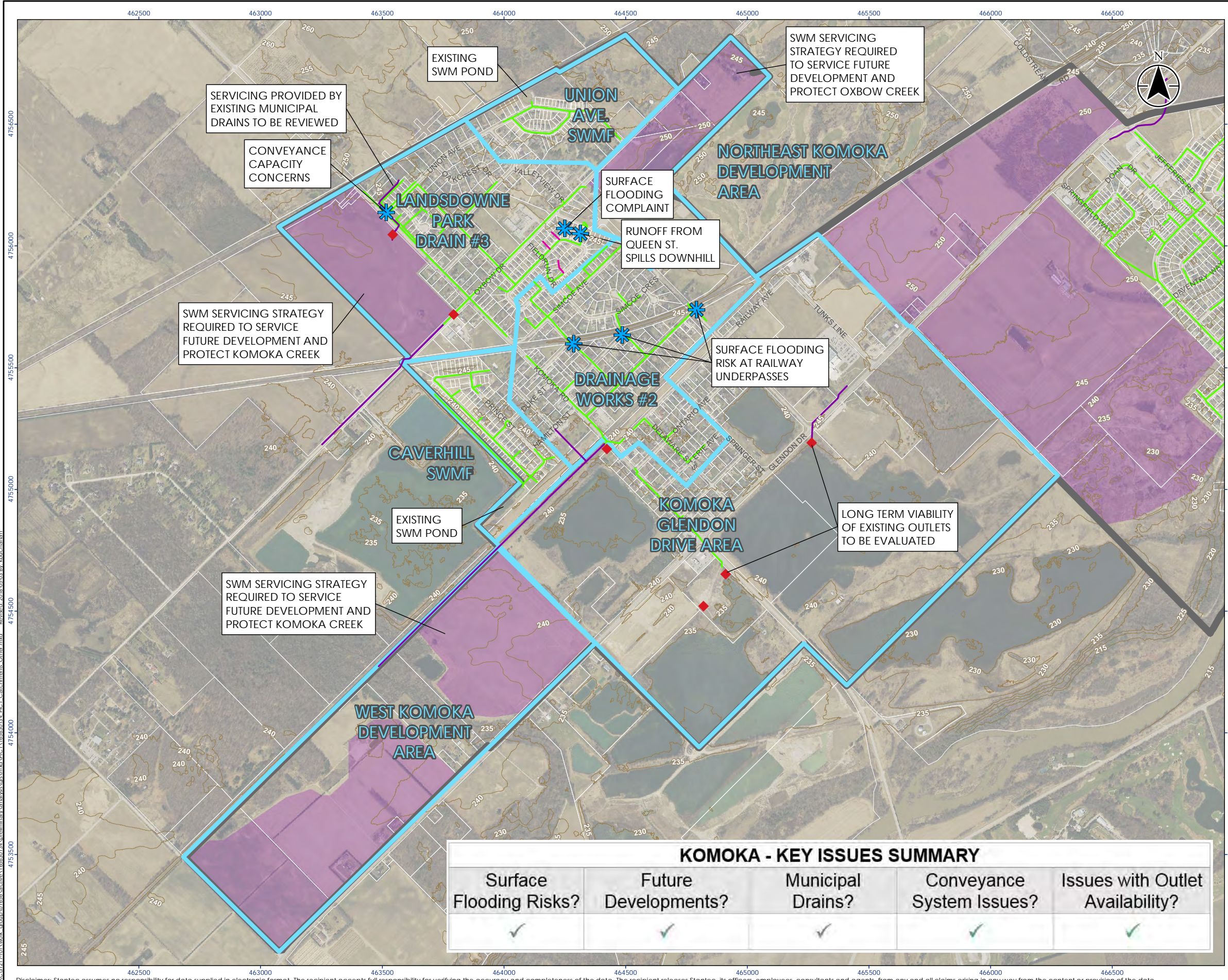


Project Location: Municipality of Middlesex Centre  
 165630134 REVA  
 Prepared by KDB on 2018-05-03

Client/Project: MUNICIPALITY OF MIDDLESEX CENTRE  
 STORM DRAINAGE MASTER PLAN MUNICIPAL CLASS ENVIRONMENTAL ASSESSMENT

Figure No. **B2-7**

Title: Existing Drainage Overview  
 Komoka



**KOMOKA - KEY ISSUES SUMMARY**

Surface Flooding Risks?	Future Developments?	Municipal Drains?	Conveyance System Issues?	Issues with Outlet Availability?
✓	✓	✓	✓	✓

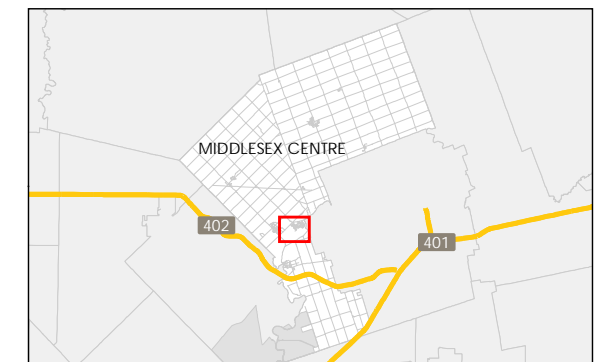


Legend

- Outlet
- Storm Sewer
- Municipal Drain
- Perforated Subdrain
- Elevation Contour
- Development Area
- Storm Catchment Area
- Settlement Boundary

0 100 200 m  
1:10,500 (At original document size of 11x17)

- Notes
1. Coordinate System: NAD 1983 UTM Zone 17N
  2. Parcels © Teranet Enterprises Inc. and its suppliers. All rights reserved. Not a plan of survey.
  3. 2015 orthomagey © 2018 of the Queen's Printer for Ontario. All rights reserved.

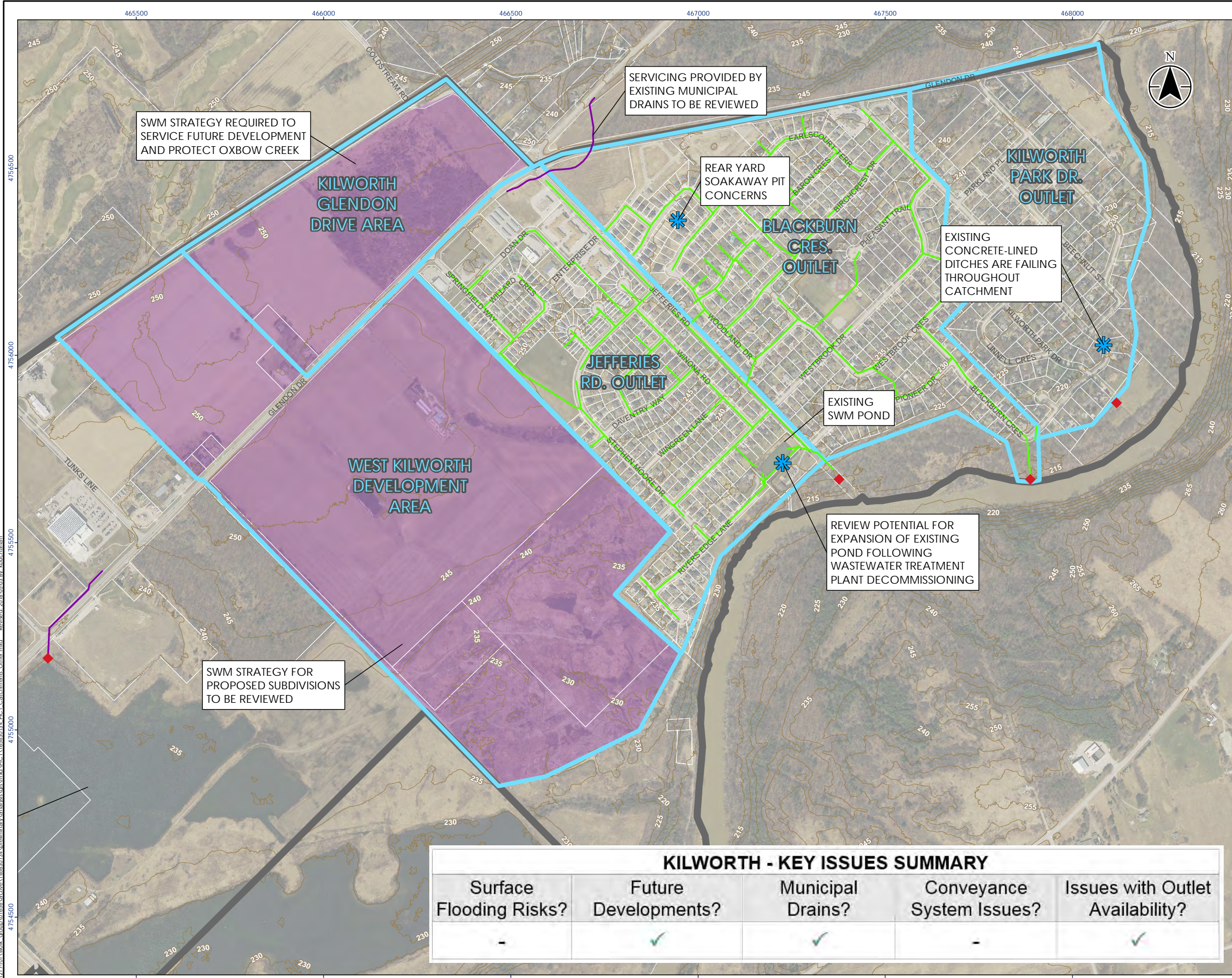


Project Location: Municipality of Middlesex Centre  
165630134 REVA  
Prepared by KDB on 2018-05-03

Client/Project: MUNICIPALITY OF MIDDLESEX CENTRE  
STORM DRAINAGE MASTER PLAN MUNICIPAL CLASS ENVIRONMENTAL ASSESSMENT

Figure No. **B2-8**

Title: Existing Drainage Overview  
Kilworth



**KILWORTH - KEY ISSUES SUMMARY**









Surface Flooding Risks?	Future Developments?	Municipal Drains?	Conveyance System Issues?	Issues with Outlet Availability?
-	✓	✓	-	✓

465500

466000



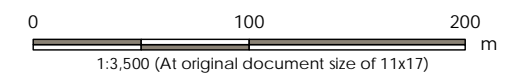
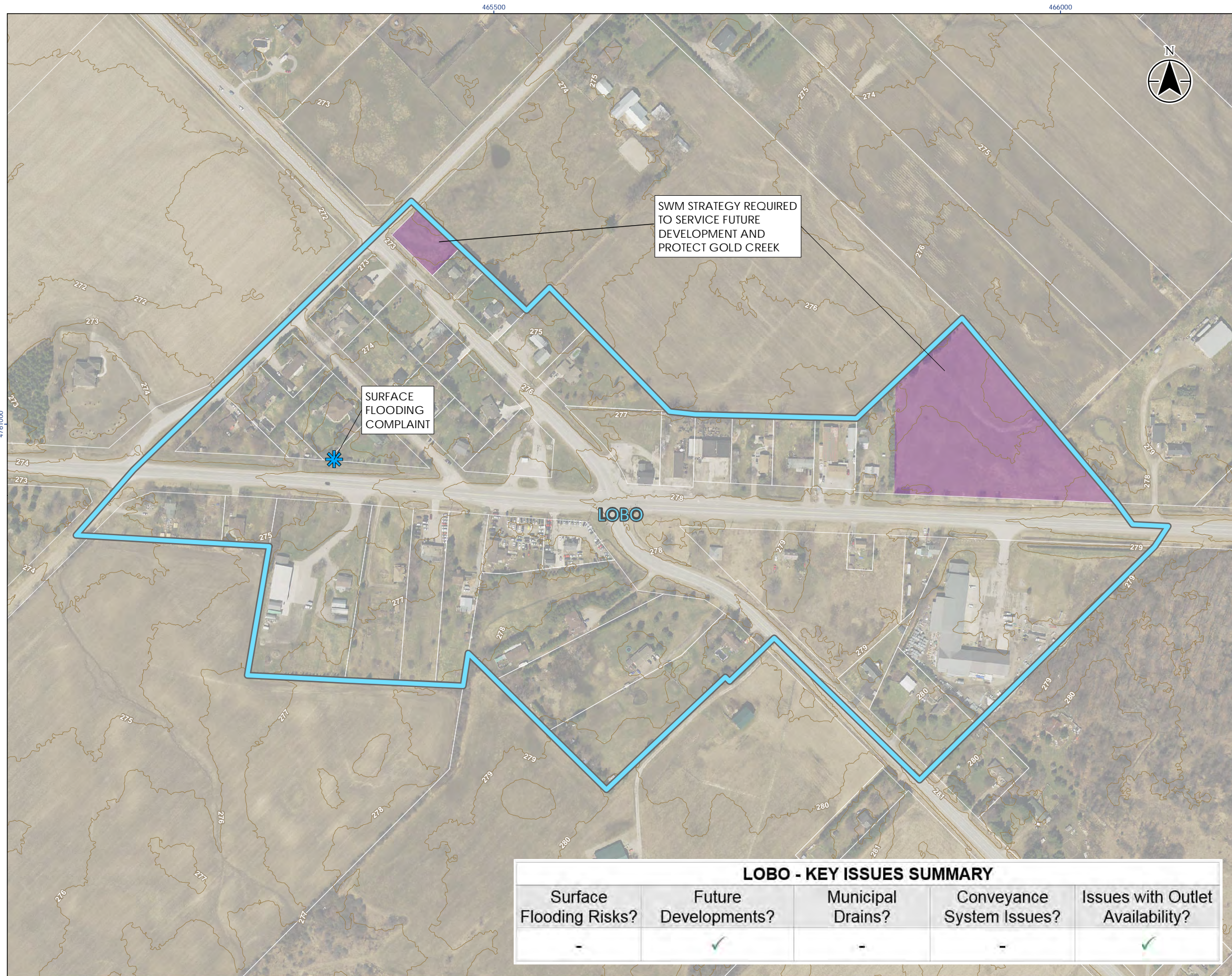
Legend

-  Outlet
-  Storm Sewer
-  Municipal Drain
-  Perforated Subdrain
-  Elevation Contour
-  Development Area
-  Storm Catchment Area
-  Settlement Boundary

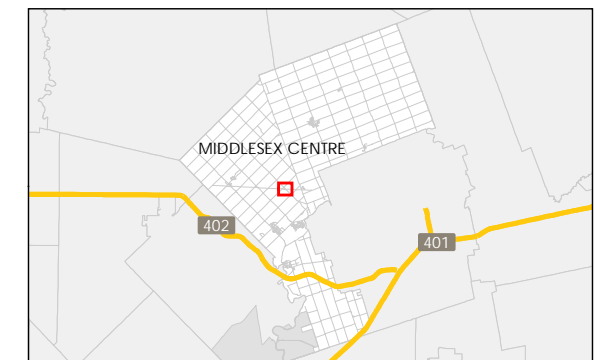
4761000

4761000

\\C:\p1\217\001\work\_group\0165630134\workspace\mxd\165630134\165630134\_P01\_Catchments\_Other.mxd - Revised: 2018-05-03 By: kbuchanan



- Notes
1. Coordinate System: NAD 1983 UTM Zone 17N
  2. Parcels © Teranet Enterprises Inc. and its suppliers. All rights reserved. Not a plan of survey.
  3. 2015 orthoimagery © 2018 of the Queen's Printer for Ontario. All rights reserved.



Project Location: 165630134 REVA  
 Municipality of Middlesex Centre Prepared by KDB on 2018-05-03

Client/Project: MUNICIPALITY OF MIDDLESEX CENTRE  
 STORM DRAINAGE MASTER PLAN MUNICIPAL CLASS ENVIRONMENTAL ASSESSMENT

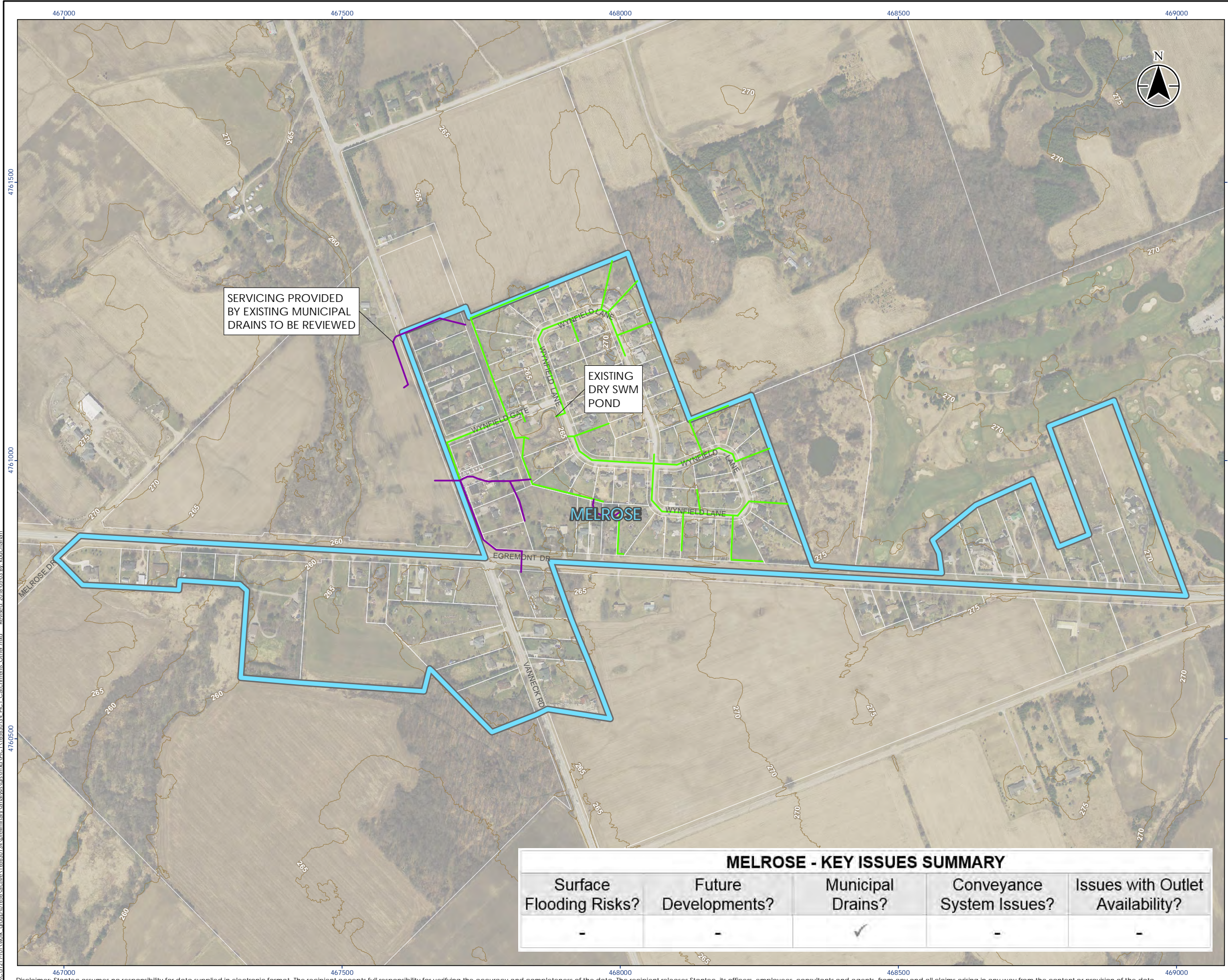
Figure No.: **B2-9**

Title: Existing Drainage Overview  
 Lobo

LOBO - KEY ISSUES SUMMARY				
Surface Flooding Risks?	Future Developments?	Municipal Drains?	Conveyance System Issues?	Issues with Outlet Availability?
-	✓	-	-	✓

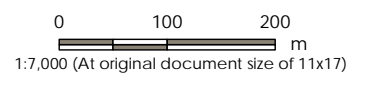
465500

466000

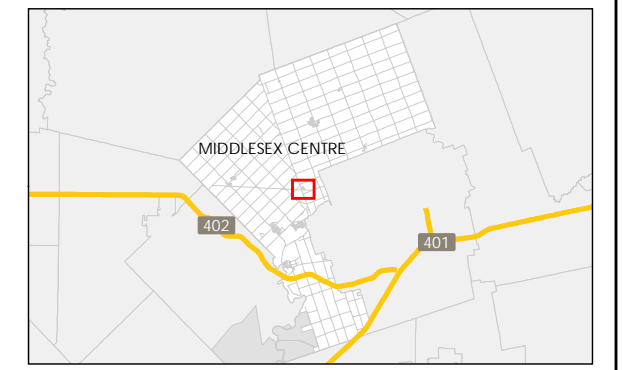


**Legend**

- ◆ Outlet
- Storm Sewer
- Municipal Drain
- Perforated Subdrain
- Elevation Contour
- Storm Catchment Area
- Settlement Boundary



- Notes**
1. Coordinate System: NAD 1983 UTM Zone 17N
  2. Parcels © Teranet Enterprises Inc. and its suppliers. All rights reserved. Not a plan of survey.
  3. 2015 orthomage © 2018 of the Queen's Printer for Ontario. All rights reserved.



Project Location: Municipality of Middlesex Centre  
 165630134 REVA  
 Prepared by KDB on 2018-05-03

Client/Project: MUNICIPALITY OF MIDDLESEX CENTRE  
 STORM DRAINAGE MASTER PLAN MUNICIPAL CLASS ENVIRONMENTAL ASSESSMENT

Figure No. **B2-10**

Title: Existing Drainage Overview  
 Melrose

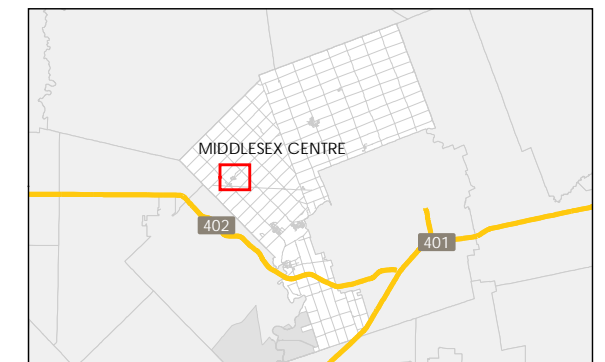
<b>MELROSE - KEY ISSUES SUMMARY</b>				
Surface Flooding Risks?	Future Developments?	Municipal Drains?	Conveyance System Issues?	Issues with Outlet Availability?
-	-	✓	-	-

Legend

- Outlet
- Storm Sewer
- Municipal Drain
- Perforated Subdrain
- Elevation Contour
- Development Area
- Storm Catchment Area
- Settlement Boundary

0 100 200 m  
1:10,500 (At original document size of 11x17)

- Notes
1. Coordinate System: NAD 1983 UTM Zone 17N
  2. Parcels © Teranet Enterprises Inc. and its suppliers. All rights reserved. Not a plan of survey.
  3. 2015 orthoimagery © 2018 of the Queen's Printer for Ontario. All rights reserved.



Project Location: Municipality of Middlesex Centre  
165630134 REVA  
Prepared by KDB on 2018-05-03

Client/Project: MUNICIPALITY OF MIDDLESEX CENTRE  
STORM DRAINAGE MASTER PLAN MUNICIPAL CLASS ENVIRONMENTAL ASSESSMENT

Figure No.: **B2-11**

Title: Existing Drainage Overview  
Poplar Hill - Coldstream

**POPLAR HILL - KEY ISSUES SUMMARY**

Surface Flooding Risks?	Future Developments?	Municipal Drains?	Conveyance System Issues?	Issues with Outlet Availability?
✓	✓	-	✓	-

