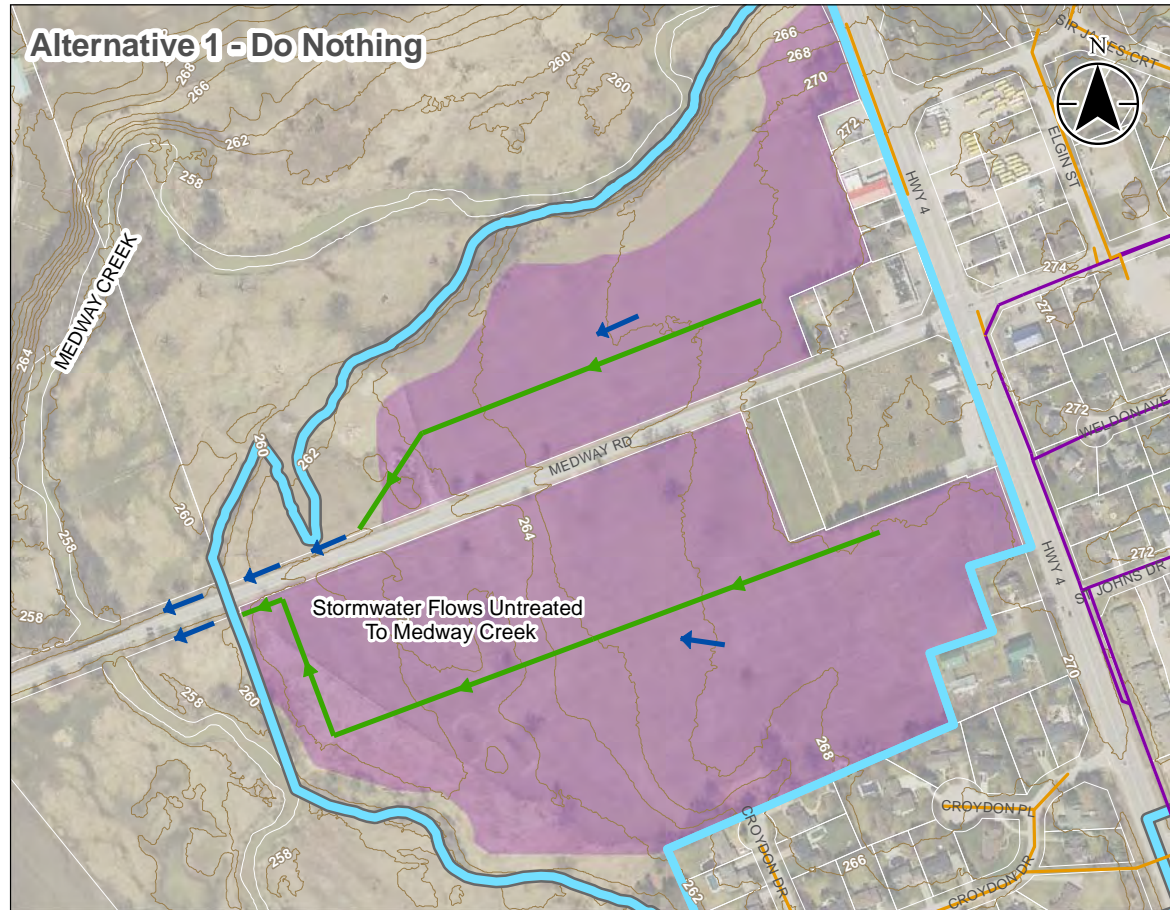


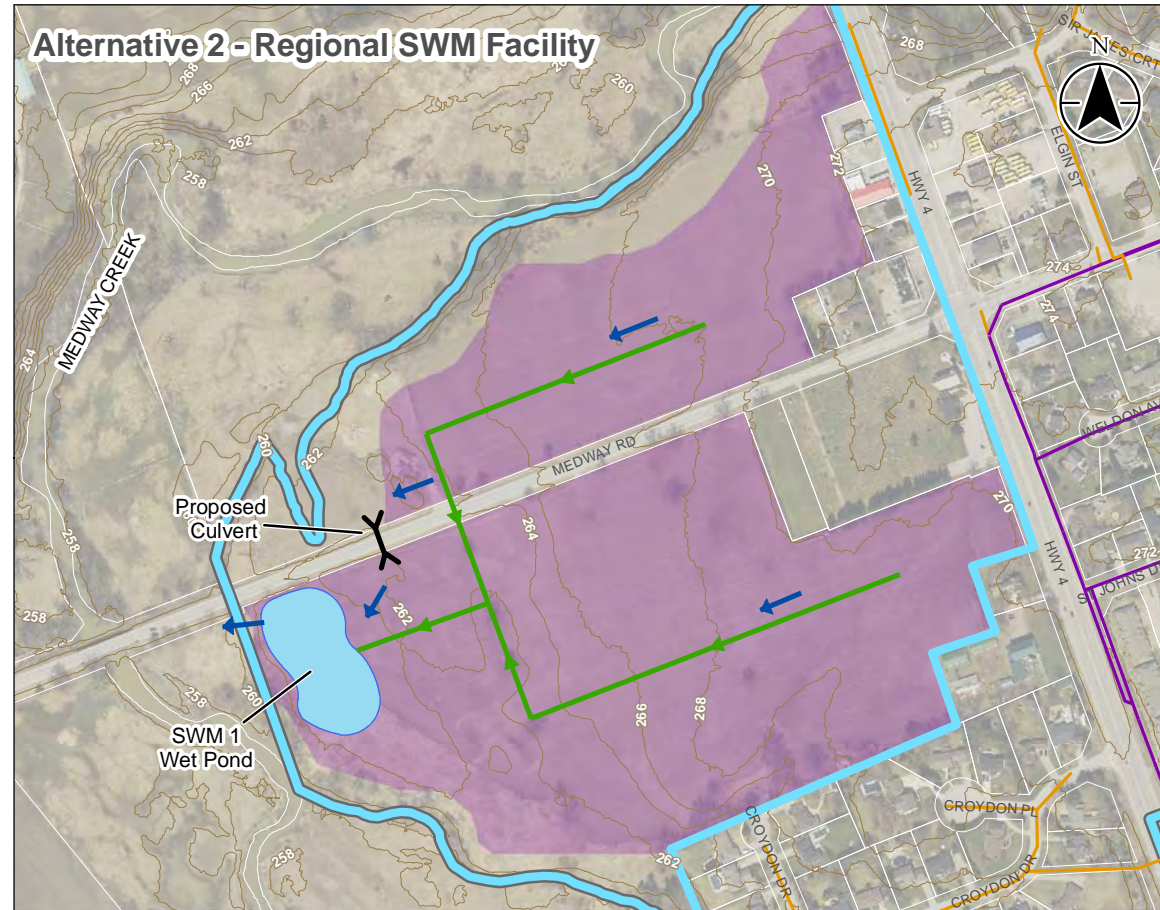
B.3 PROPOSED ALTERNATIVES

Middlesex Centre Settlement Area Stormwater
Master Plan, July 2020

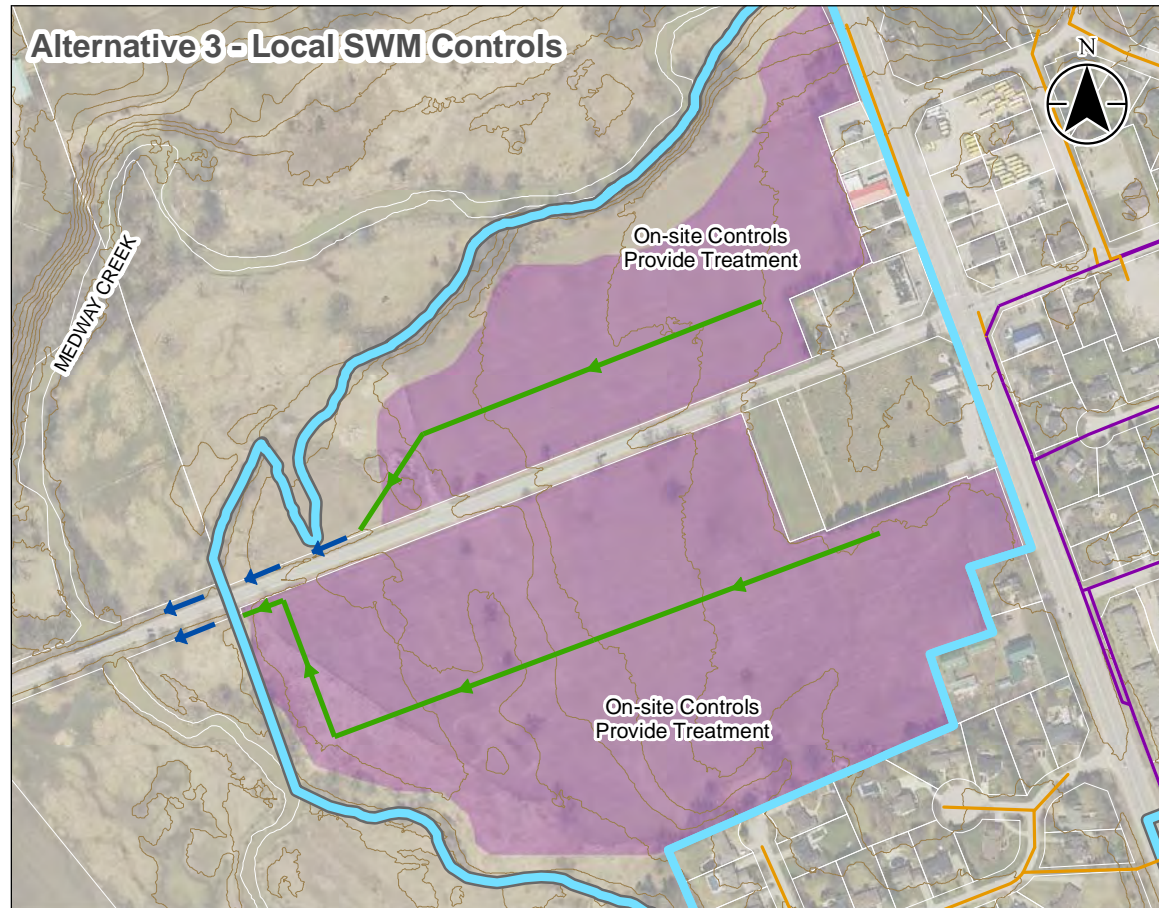
Alternative 1 - Do Nothing



Alternative 2 - Regional SWM Facility

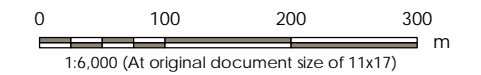


Alternative 3 - Local SWM Controls

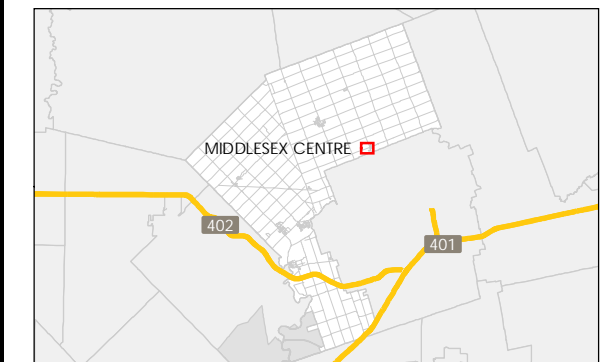


Legend

- Elevation Contour
- Development Area
- Storm Catchment Area
- Settlement Boundary
- Existing Infrastructure:**
- Outlet
- Storm Sewer
- Municipal Drain
- Proposed Infrastructure:**
- Overland Flow Direction
- Storm Sewer
- SWM Facility



- Notes
1. Coordinate System: NAD 1983 UTM Zone 17N
 2. Parcels © Teranet Enterprises Inc. and its suppliers. All rights reserved. Not a plan of survey
 3. 2015 orthoimagery © 2018 of the Queen's Printer for Ontario. All rights reserved.



Project Location: Municipality of Middlesex Centre
 165630134 REVA
 Prepared by KDB on 2020-03-10

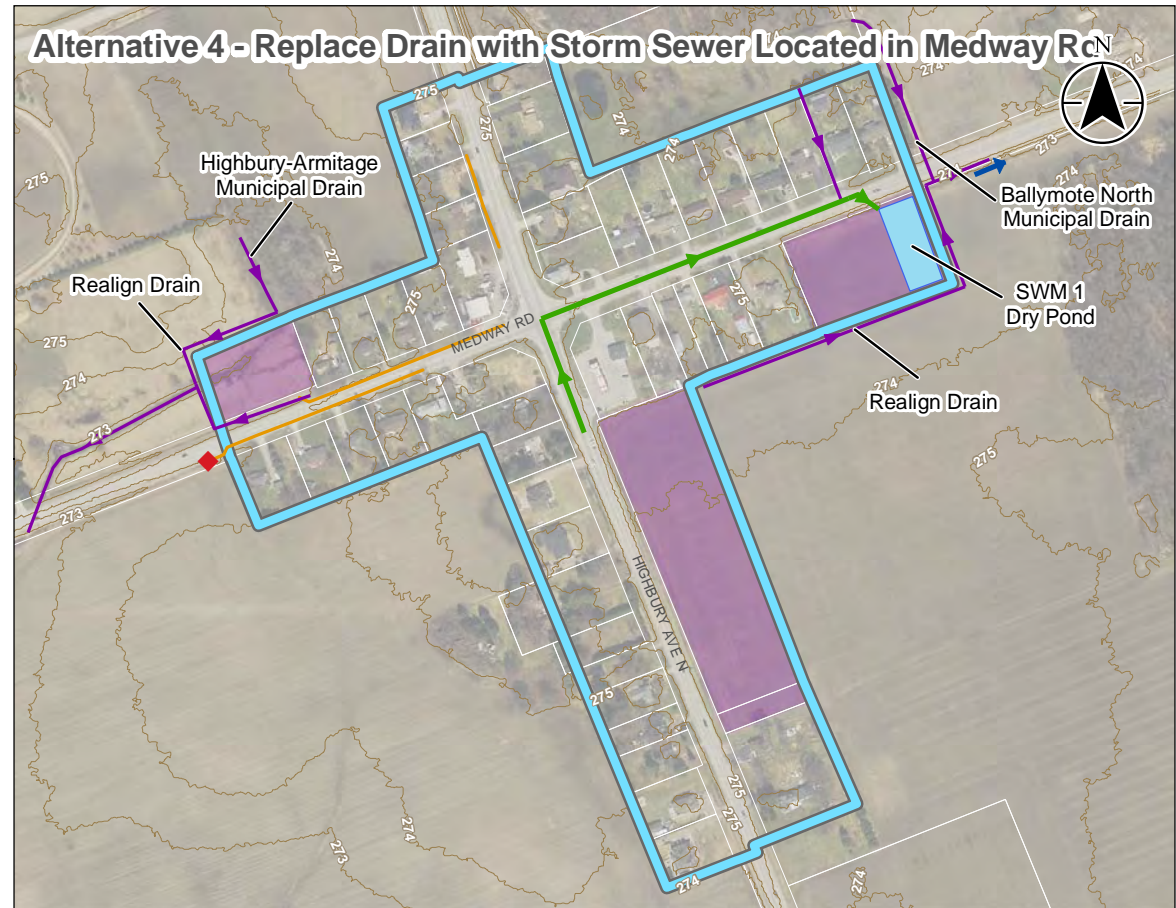
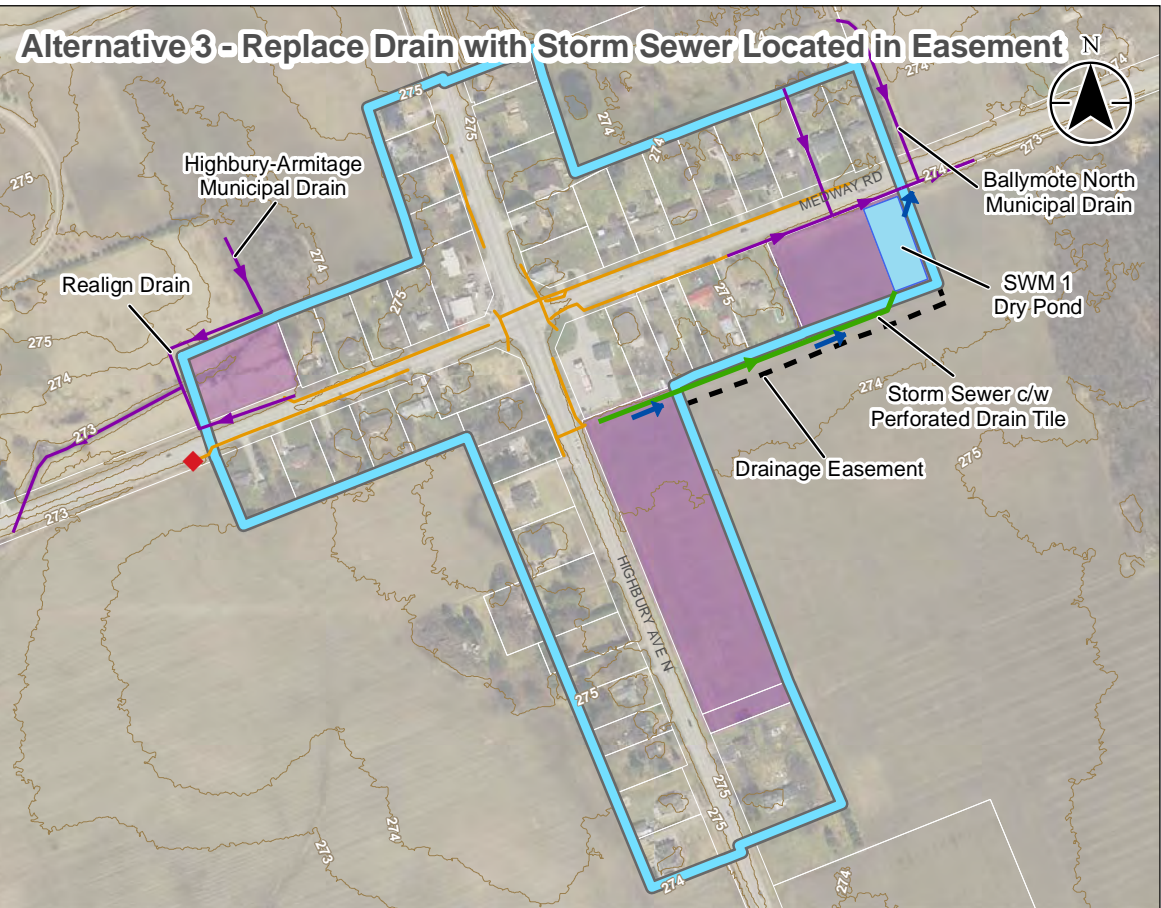
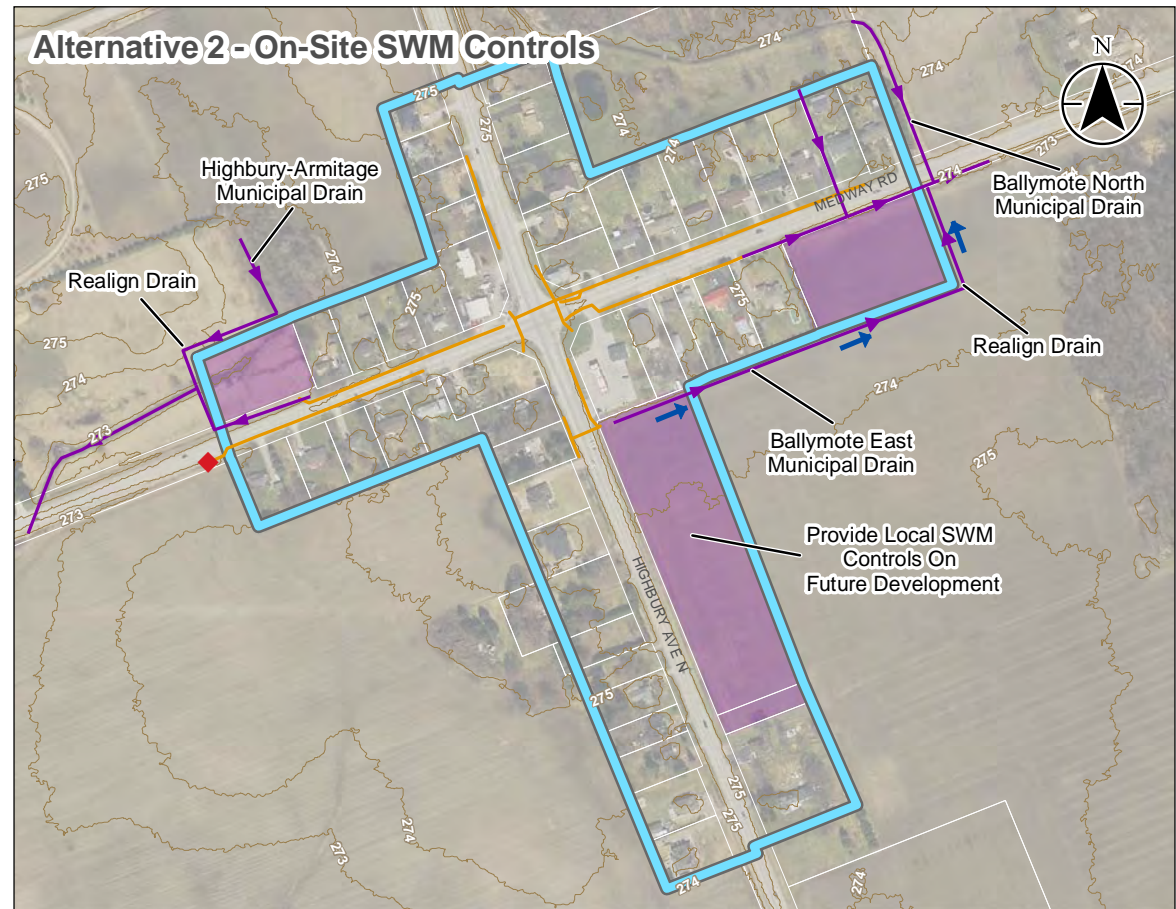
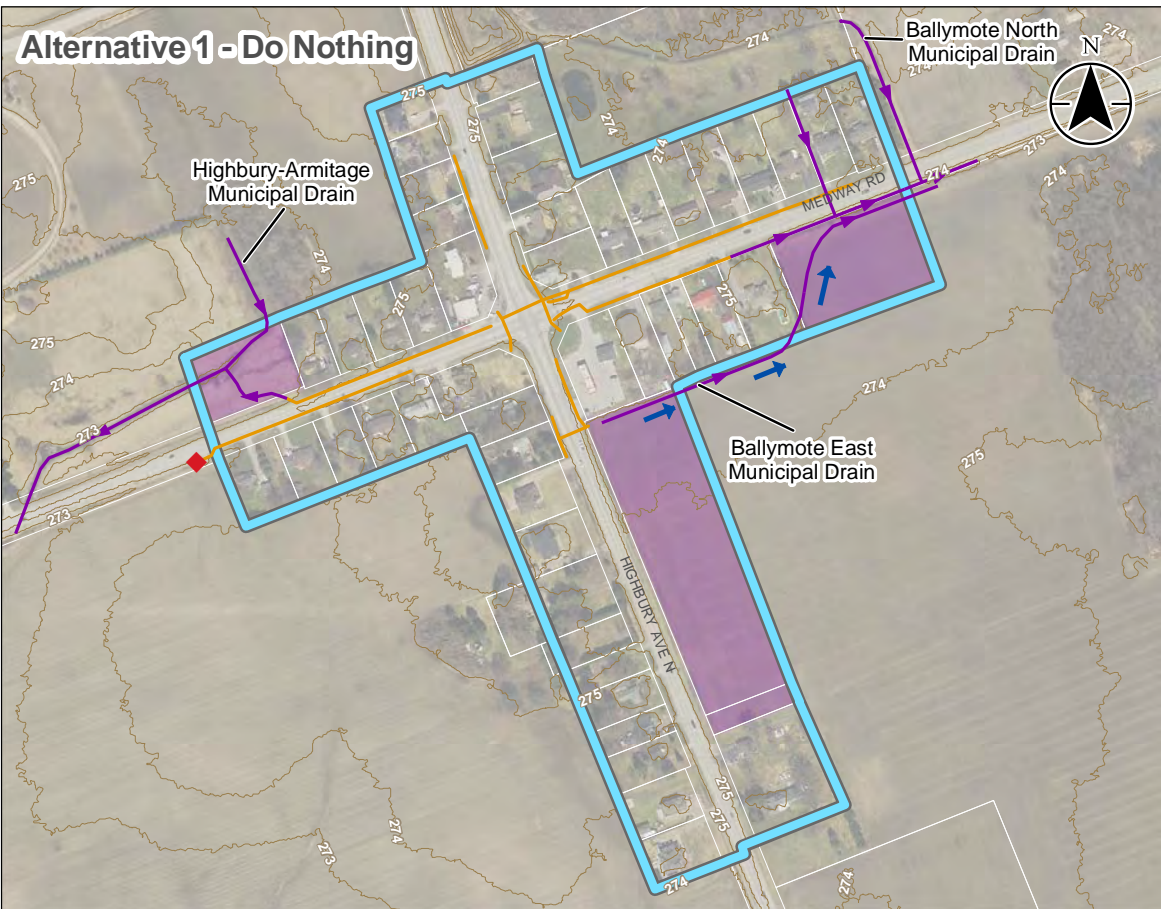
Client/Project:
 MUNICIPALITY OF MIDDLESEX CENTRE
 STORM DRAINAGE MASTER PLAN MUNICIPAL CLASS
 ENVIRONMENTAL ASSESSMENT

Figure No.
 B3-1

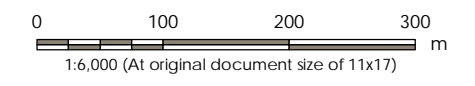
Title
 Arva Development Area
 Alternatives

\\CA\0217\FPP\01\work_group\0165630134\preliminary\analysis\sga.mxd\Options\165630134.OPF.B3-1_Arva.mxd Revised: 2020-03-10 By: abrown

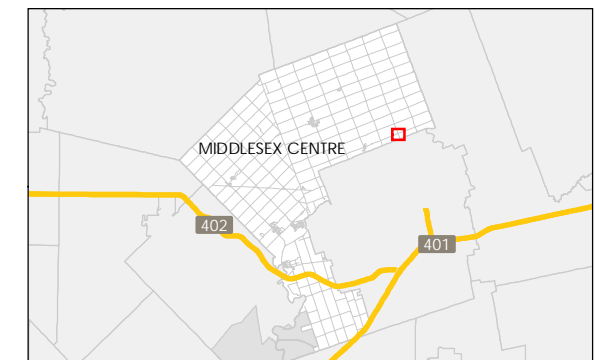
Disclaimer: Stantec assumes no responsibility for data supplied in electronic format. The recipient accepts full responsibility for verifying the accuracy and completeness of the data. The recipient releases Stantec, its officers, employees, consultants and agents, from any and all claims arising in any way from the content or provision of the data.



- Legend**
- Elevation Contour
 - Development Area
 - Storm Catchment Area
 - Settlement Boundary
- Existing Infrastructure:**
- Outlet
 - Storm Sewer
 - Municipal Drain
- Proposed Infrastructure:**
- Overland Flow Direction
 - Storm Sewer
 - SWM Facility



- Notes**
1. Coordinate System: NAD 1983 UTM Zone 17N
 2. Parcels © Teranet Enterprises Inc. and its suppliers. All rights reserved. Not a plan of survey.
 3. 2015 orthoimagery © 2018 of the Queen's Printer for Ontario. All rights reserved.



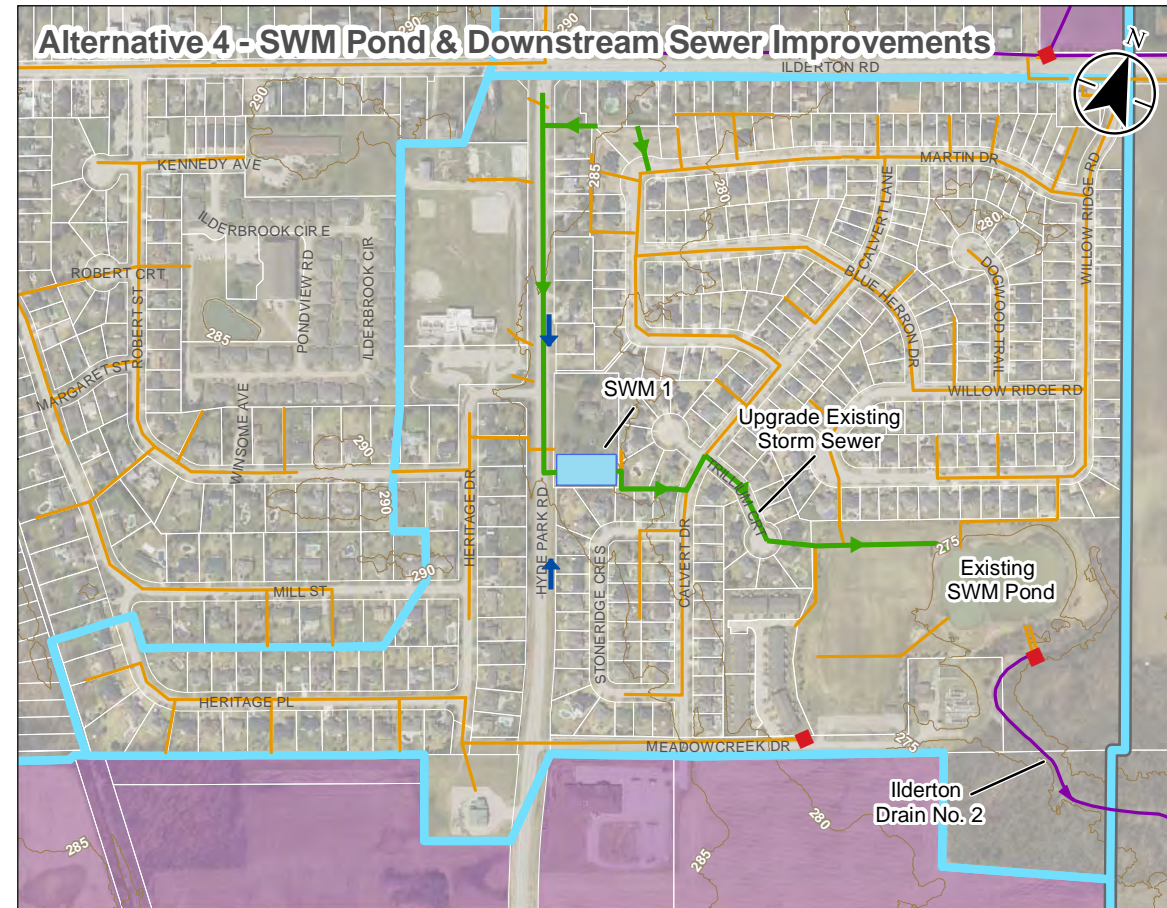
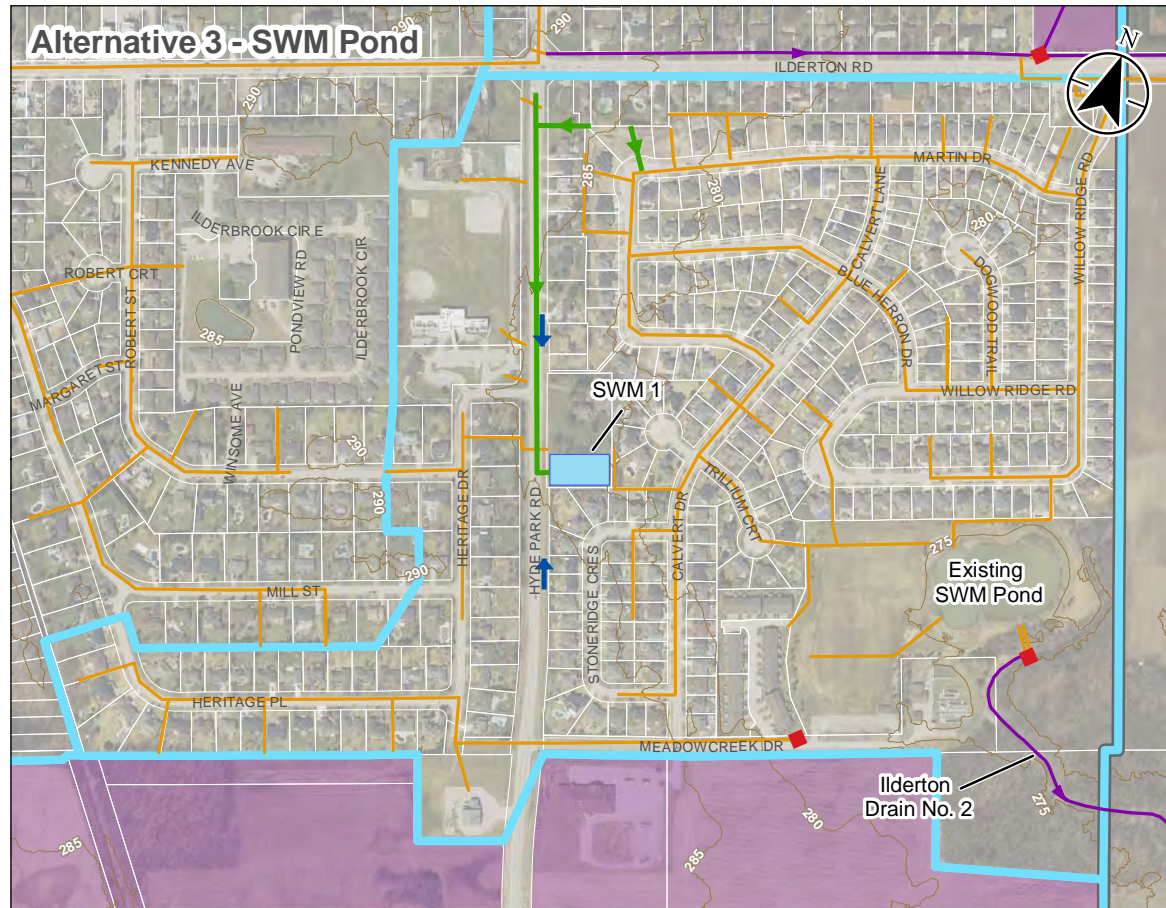
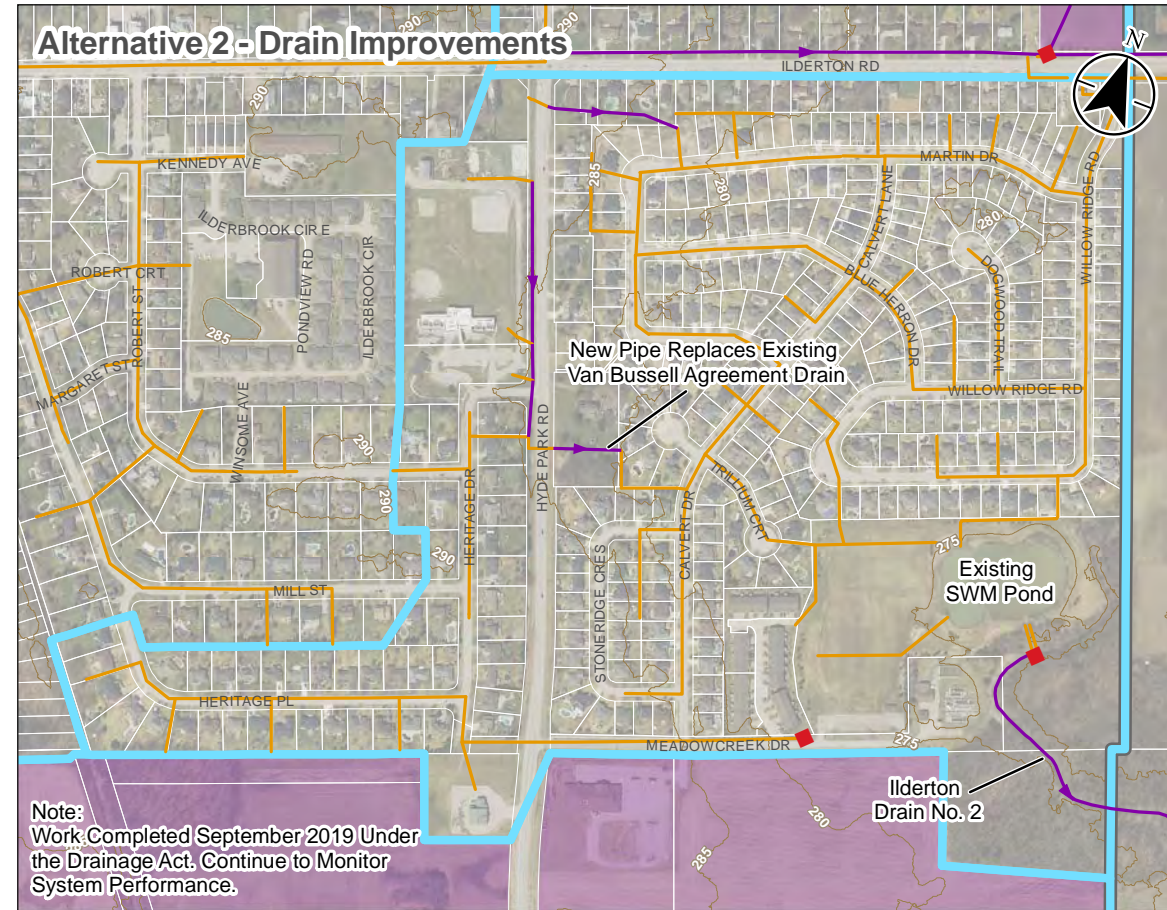
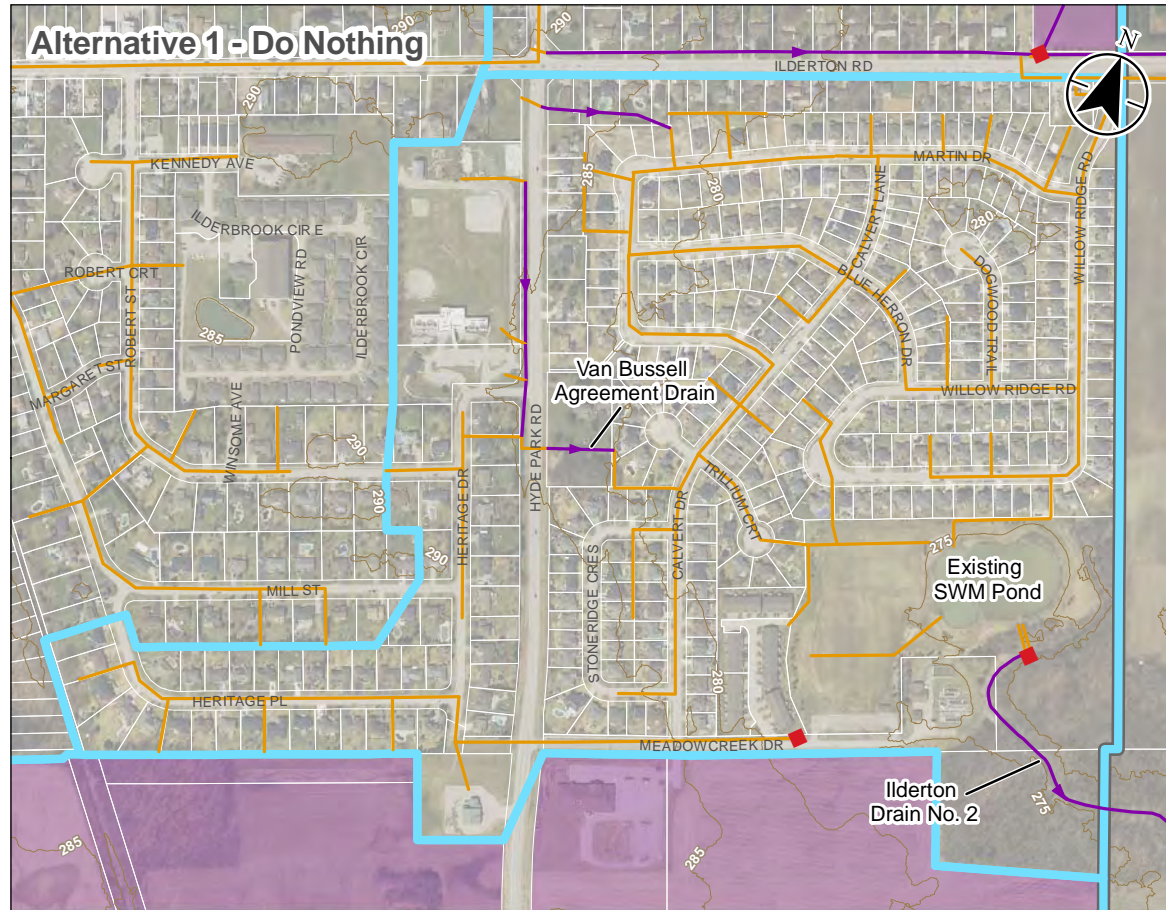
Project Location: Municipality of Middlesex Centre
 165630134 REVA
 Prepared by KDB on 2020-07-09

Client/Project: MUNICIPALITY OF MIDDLESEX CENTRE
 STORM DRAINAGE MASTER PLAN MUNICIPAL CLASS ENVIRONMENTAL ASSESSMENT

Figure No. B3-2

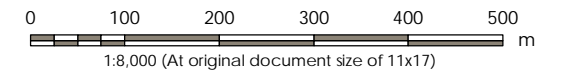
Title: Ballymote Alternatives

\\CA\217\PPFS\01_work_group\0165630134\preliminary\analysis\B3-2_Ballymote.mxd Revised: 2020-07-09 By: alltown



Legend

- Elevation Contour
- Development Area
- Storm Catchment Area
- Settlement Boundary
- Existing Infrastructure:**
- Outlet
- Storm Sewer
- Municipal Drain
- Proposed Infrastructure:**
- Overland Flow Direction
- Storm Sewer
- SWM Facility



- Notes
1. Coordinate System: NAD 1983 UTM Zone 17N
 2. Parcels © Teranet Enterprises Inc. and its suppliers. All rights reserved. Not a plan of survey
 3. 2015 orthoimagery © 2018 of the Queen's Printer for Ontario. All rights reserved.

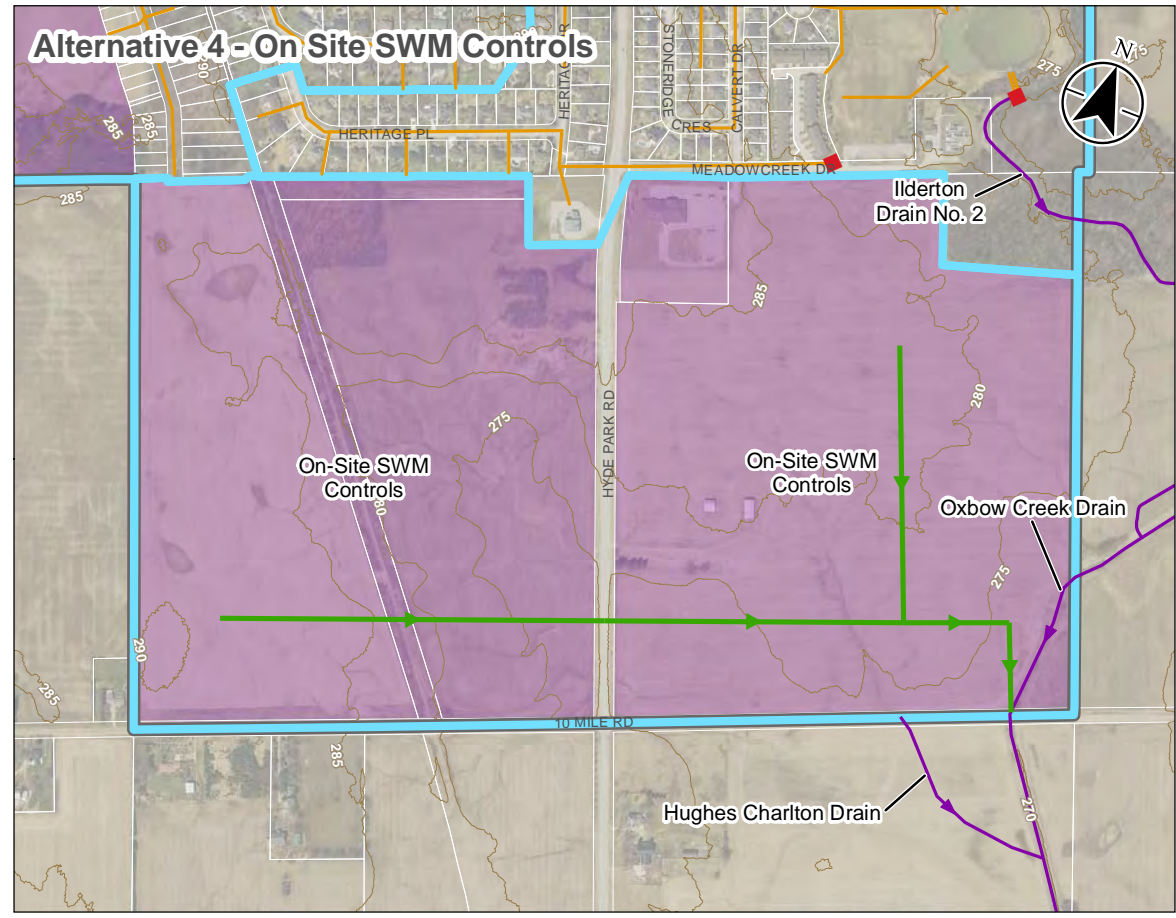
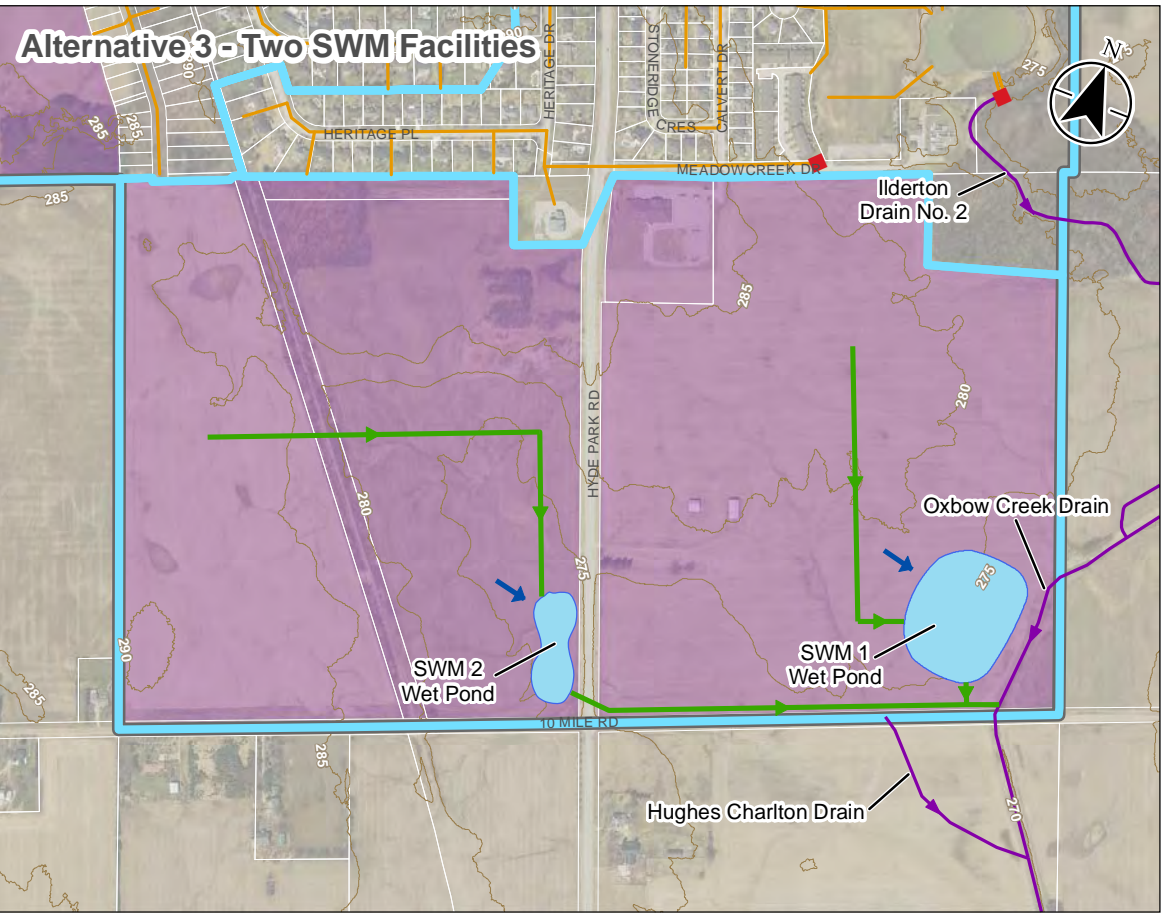
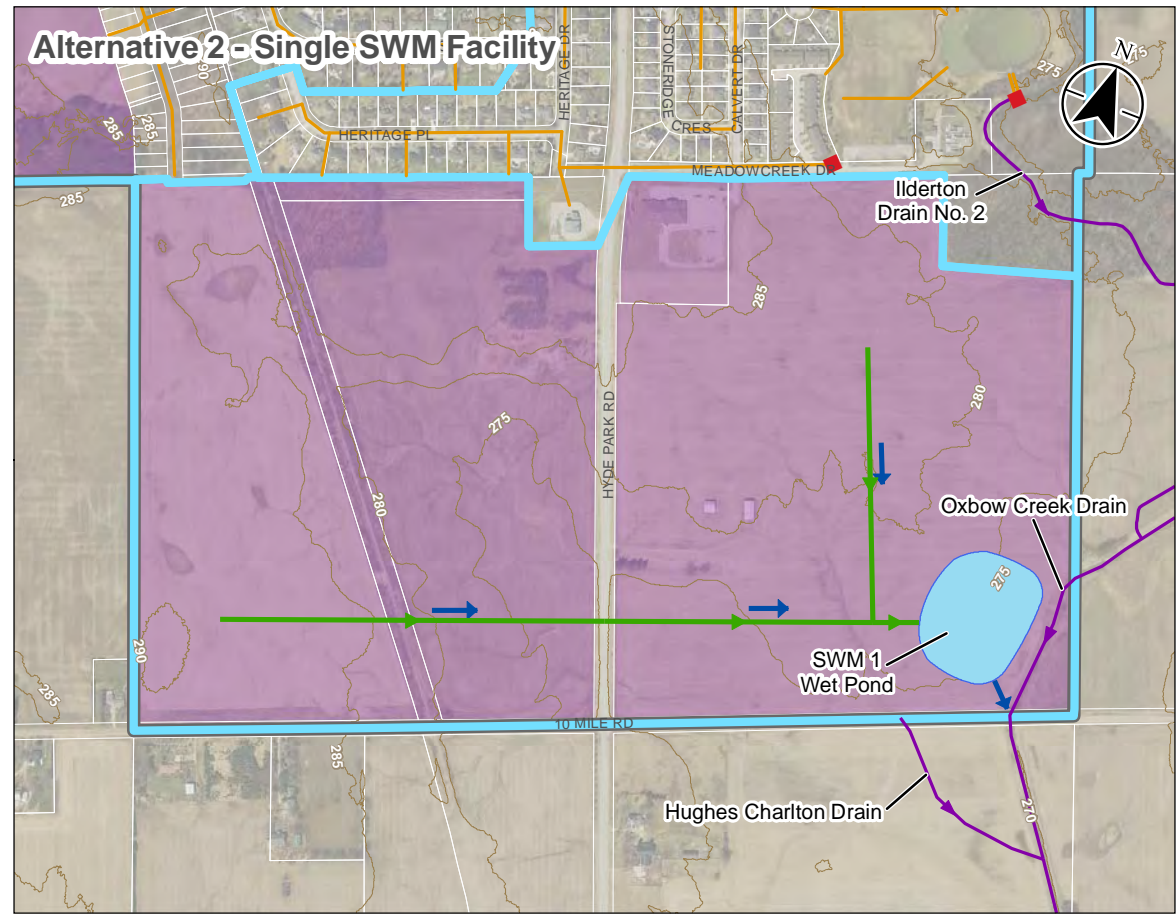
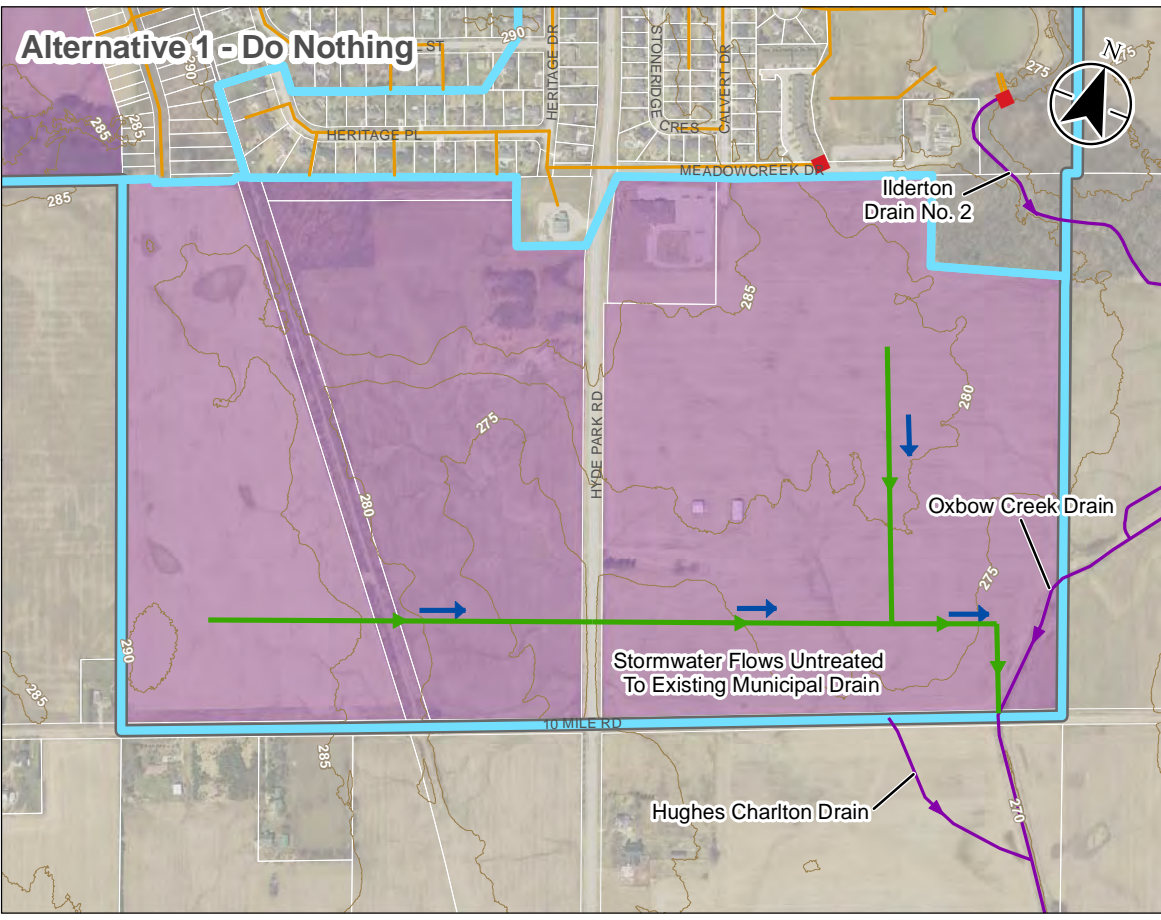


Project Location: Municipality of Middlesex Centre
 165630134 REVA
 Prepared by ASB on 2020-07-10

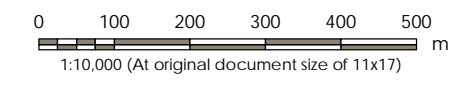
Client/Project: MUNICIPALITY OF MIDDLESEX CENTRE
 STORM DRAINAGE MASTER PLAN MUNICIPAL CLASS ENVIRONMENTAL ASSESSMENT

Figure No. B3-3

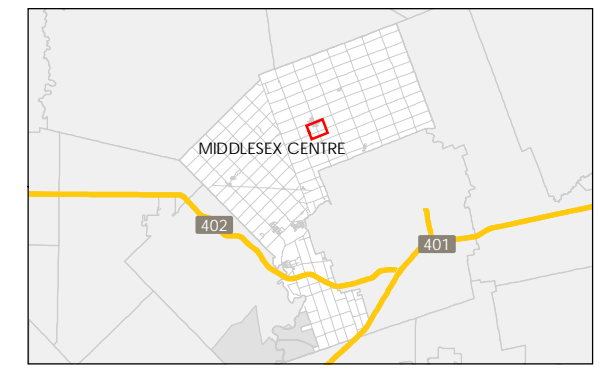
Title: Ilderton Drain No. 2 Alternatives



- Legend**
- Elevation Contour
 - Development Area
 - Storm Catchment Area
 - Settlement Boundary
- Existing Infrastructure:**
- Outlet
 - Storm Sewer
 - Municipal Drain
- Proposed Infrastructure:**
- Overland Flow Direction
 - Storm Sewer
 - SWM Facility



- Notes**
1. Coordinate System: NAD 1983 UTM Zone 17N
 2. Parcels © Teranet Enterprises Inc. and its suppliers. All rights reserved. Not a plan of survey.
 3. 2015 orthoimagery © 2018 of the Queen's Printer for Ontario. All rights reserved.



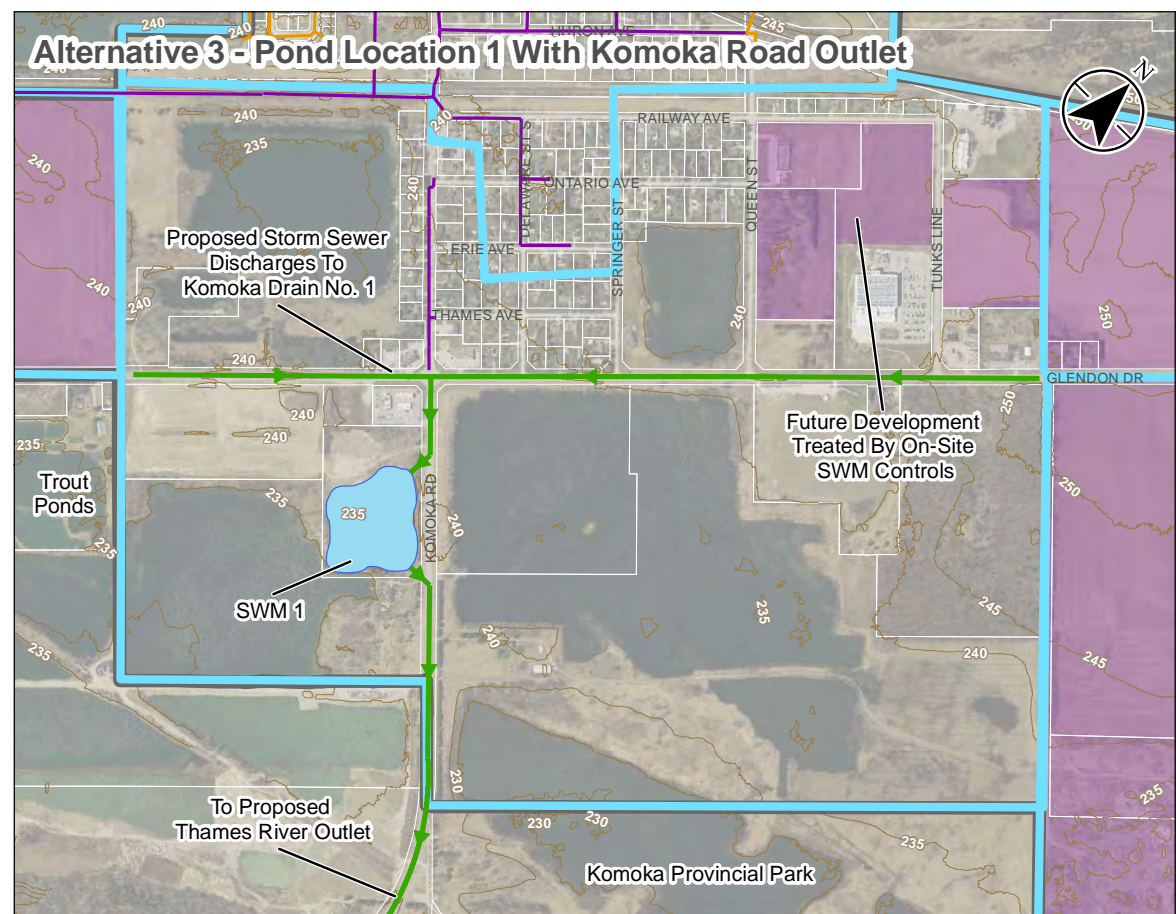
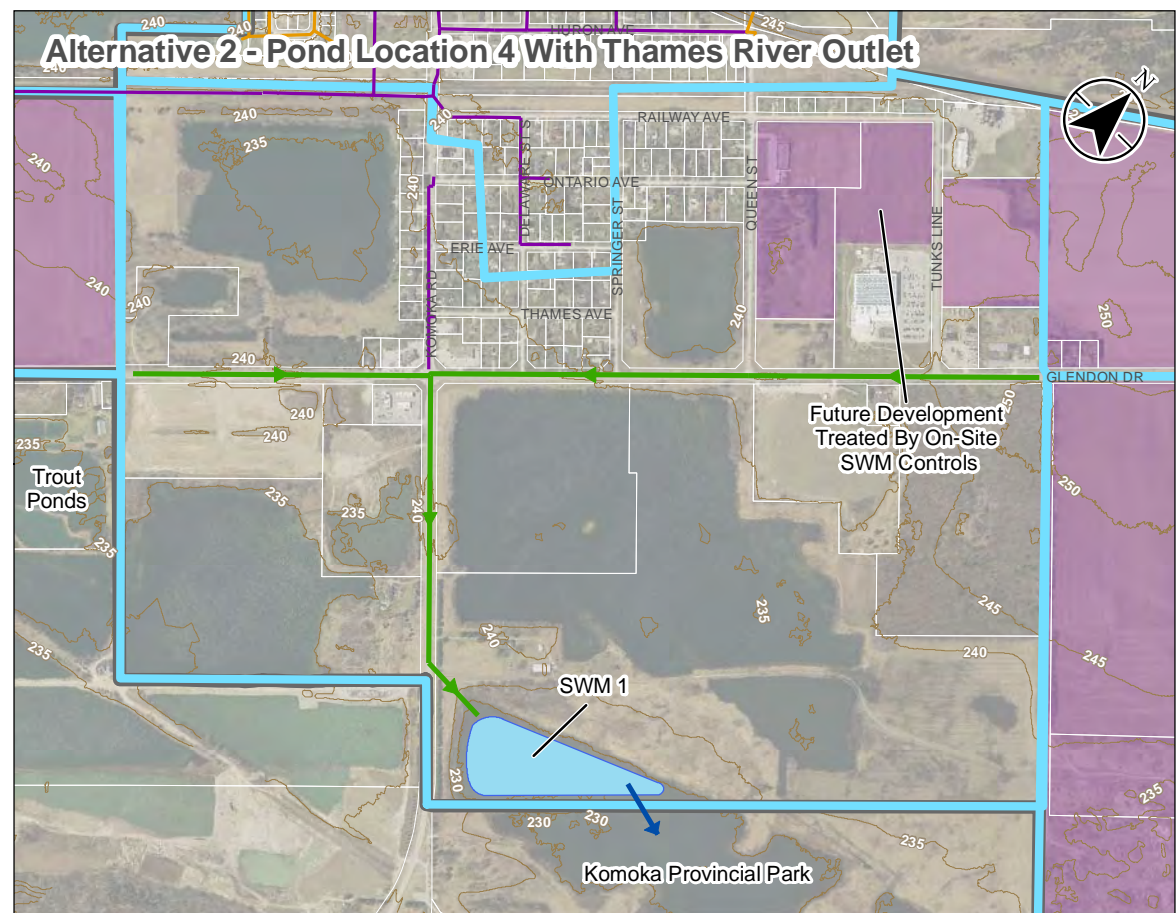
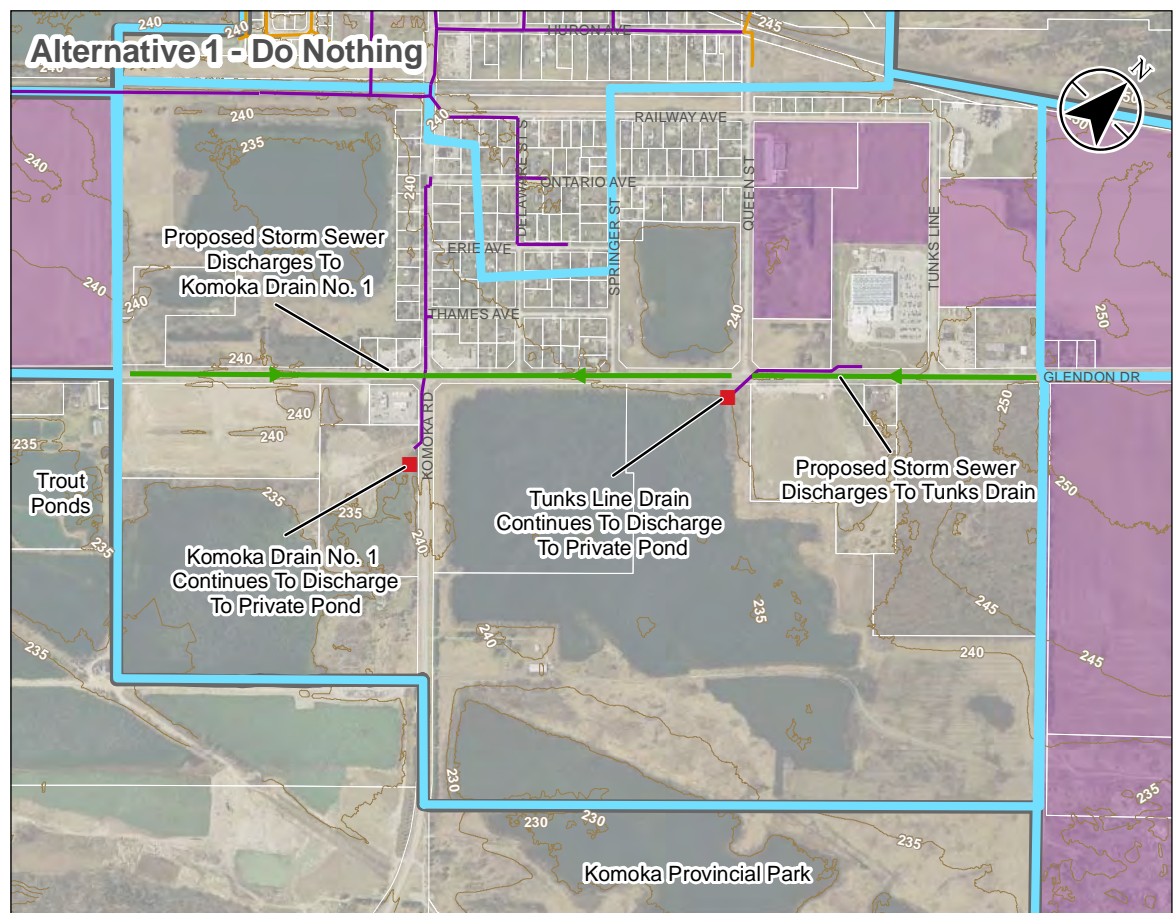
Project Location: Municipality of Middlesex Centre
 165630134 REVA
 Prepared by ASB on 2020-03-10

Client/Project: MUNICIPALITY OF MIDDLESEX CENTRE
 STORM DRAINAGE MASTER PLAN MUNICIPAL CLASS ENVIRONMENTAL ASSESSMENT

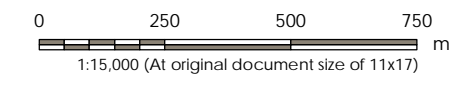
Figure No.: B3-4

Title: South Ilderton Development Area Alternatives

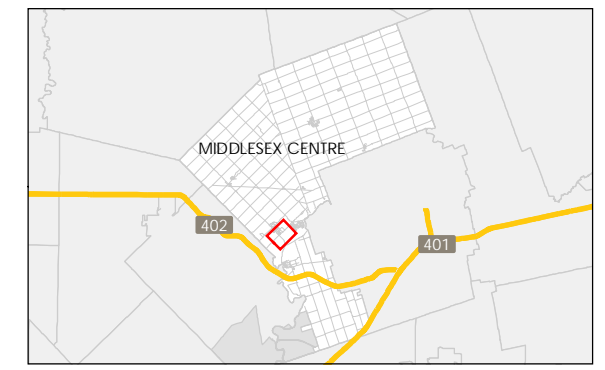
\\CA\0217\FPP\01_work_group\0165630134\preliminary\analysis\165630134_L01_P1_BB_4_IldertonSouthDA.mxd Revised: 2020-03-10 By: albrovn



- Legend**
- Elevation Contour
 - Development Area
 - Storm Catchment Area
 - Settlement Boundary
- Existing Infrastructure:**
- Outlet
 - Storm Sewer
 - Municipal Drain
- Proposed Infrastructure:**
- Overland Flow Direction
 - Storm Sewer
 - Watermain
 - SWM Facility



- Notes**
1. Coordinate System: NAD 1983 UTM Zone 17N
 2. Parcels © Teranet Enterprises Inc. and its suppliers. All rights reserved. Not a plan of survey.
 3. 2015 orthoimagery © 2018 of the Queen's Printer for Ontario. All rights reserved.



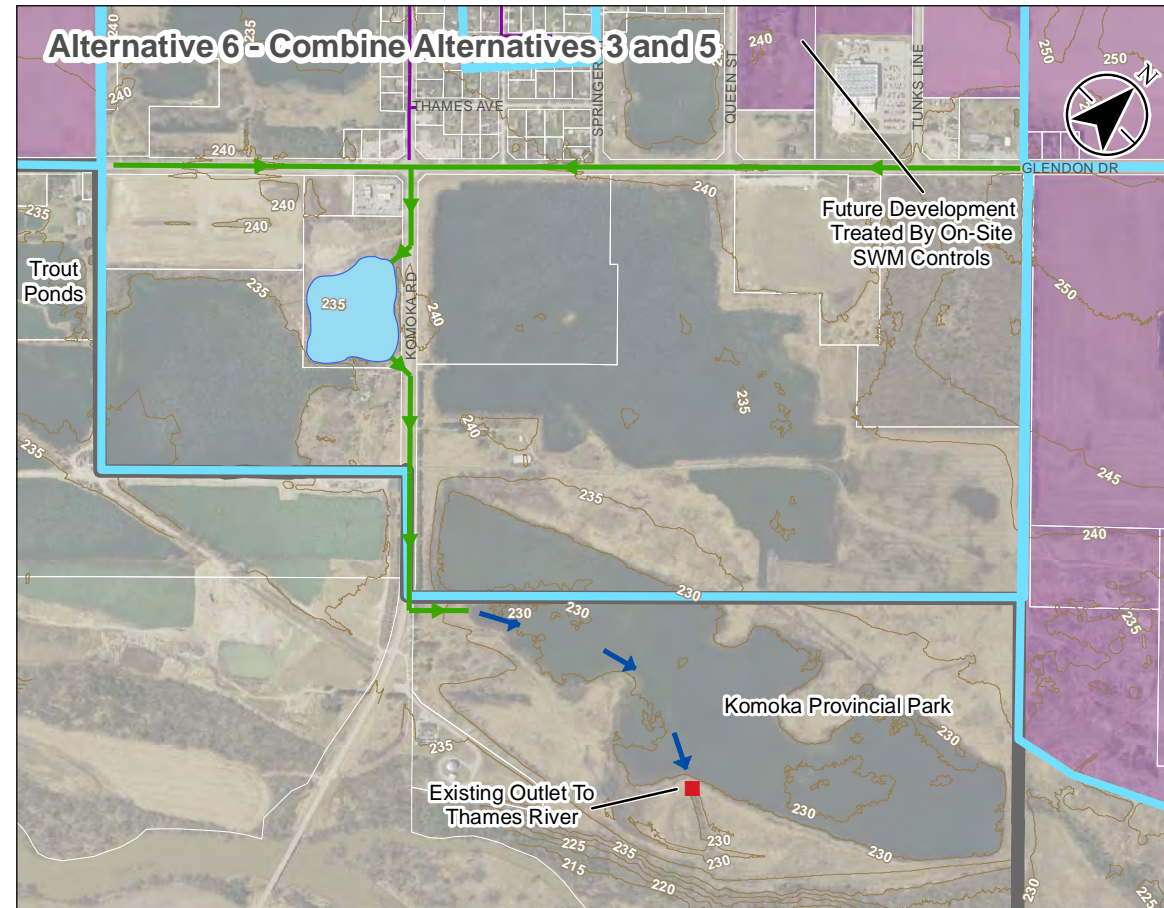
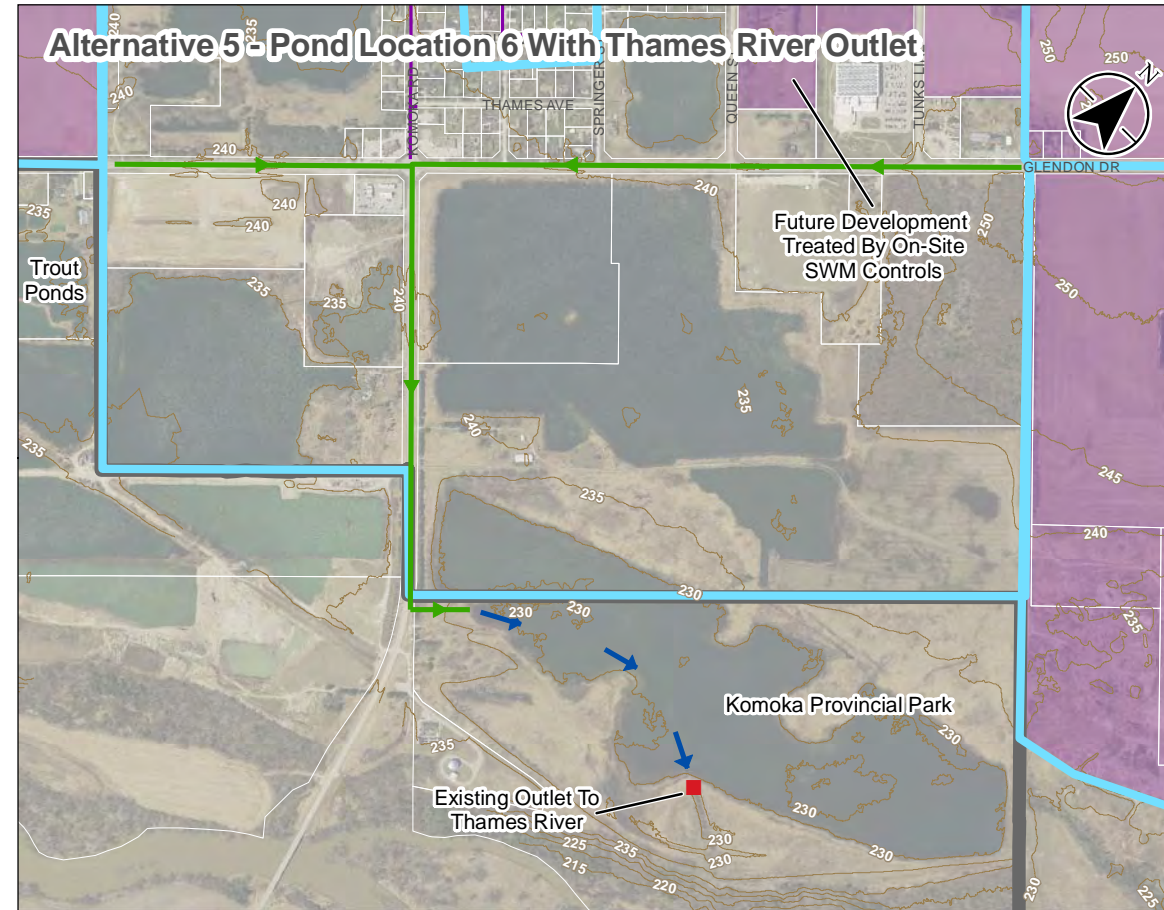
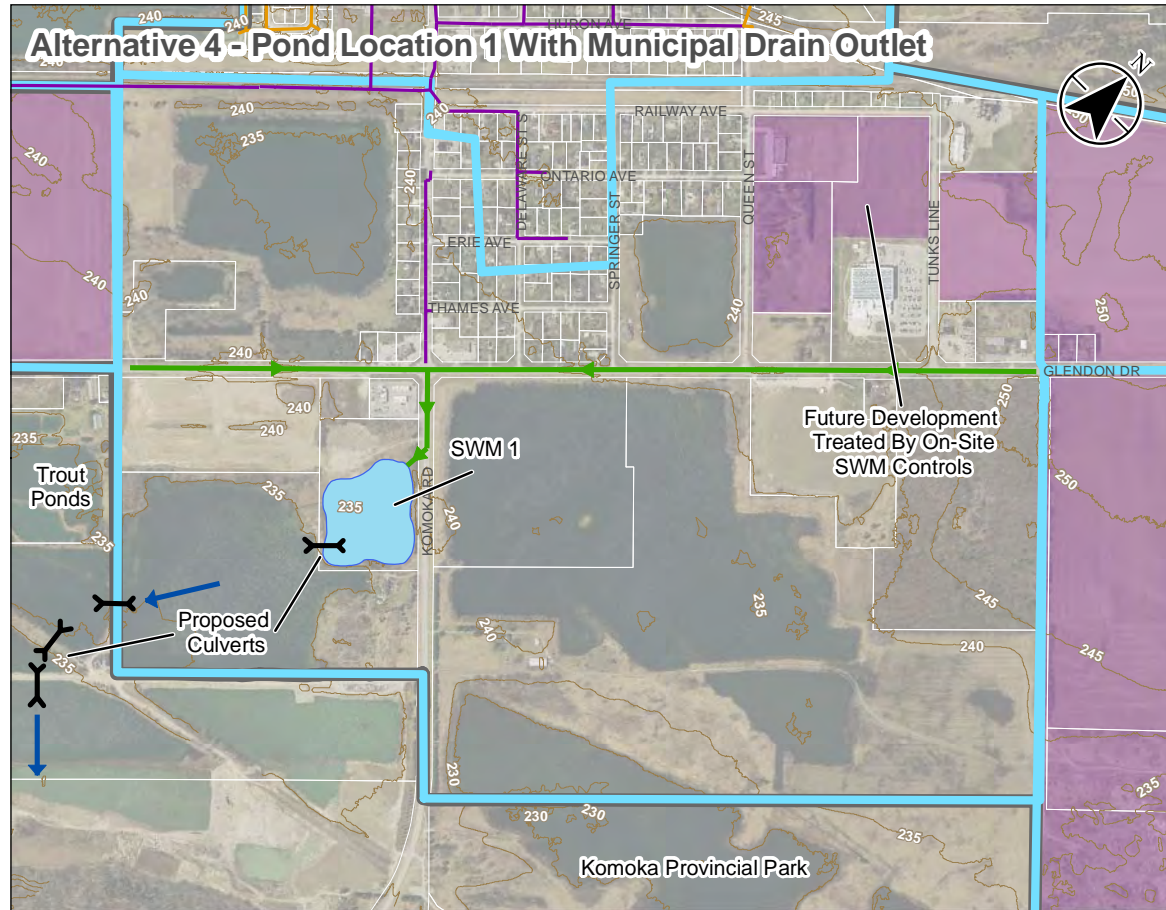
Project Location: Municipality of Middlesex Centre
 165630134 REVA
 Prepared by ASB on 2020-03-10

Client/Project: MUNICIPALITY OF MIDDLESEX CENTRE
 STORM DRAINAGE MASTER PLAN MUNICIPAL CLASS ENVIRONMENTAL ASSESSMENT

Figure No.: B3-5a

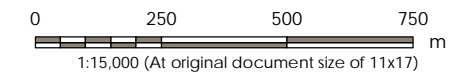
Title: Komoka Drain No. 1 Alternatives

\\CA\0217\FPP\SS01\work_group\0165630134\preliminary\analysis\sga.mxd\Options\165630134.OPF_B3-5a_KomokaDrain1.mxd Revised: 2020-03-10 By: abrown

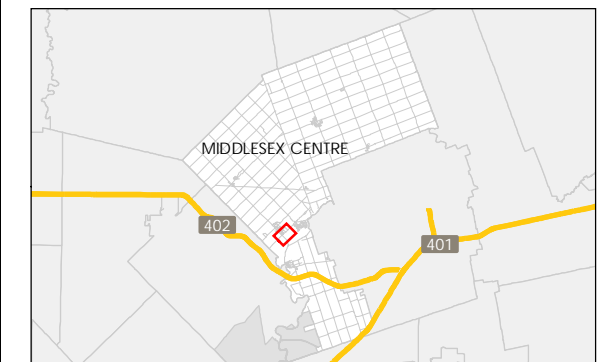


Legend

- Elevation Contour
- Development Area
- Storm Catchment Area
- Settlement Boundary
- Existing Infrastructure:**
- Outlet
- Storm Sewer
- Municipal Drain
- Proposed Infrastructure:**
- Overland Flow Direction
- Storm Sewer
- Watermain
- SWM Facility



- Notes**
1. Coordinate System: NAD 1983 UTM Zone 17N
 2. Parcels © Teranet Enterprises Inc. and its suppliers. All rights reserved. Not a plan of survey.
 3. 2015 orthoimagery © 2018 of the Queen's Printer for Ontario. All rights reserved.

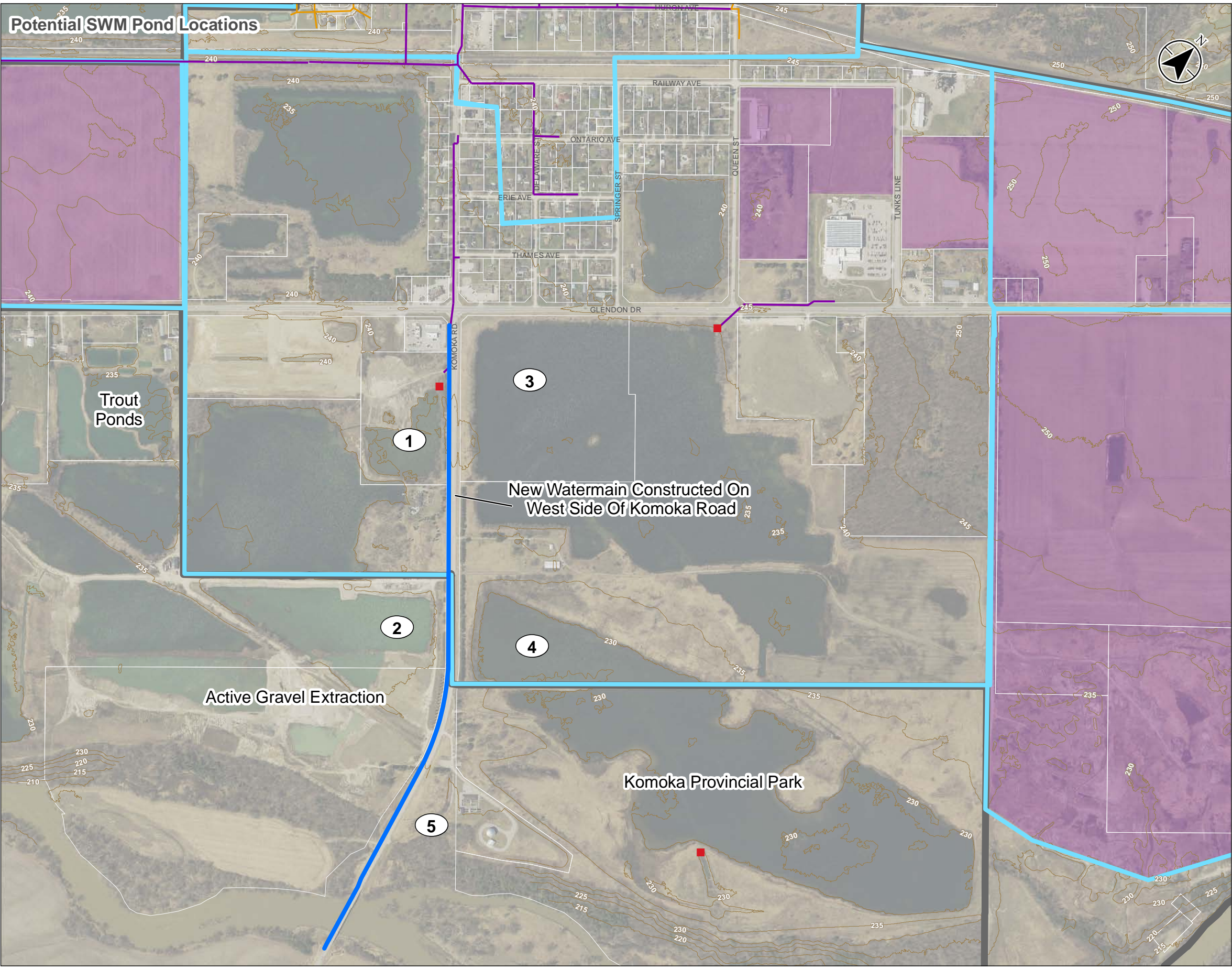


Project Location: Municipality of Middlesex Centre
 165630134 REVA
 Prepared by ASB on 2020-03-10

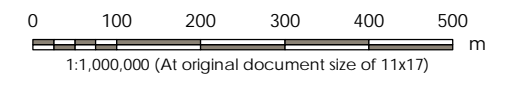
Client/Project: MUNICIPALITY OF MIDDLESEX CENTRE
 STORM DRAINAGE MASTER PLAN MUNICIPAL CLASS ENVIRONMENTAL ASSESSMENT

Figure No.: B3-5b

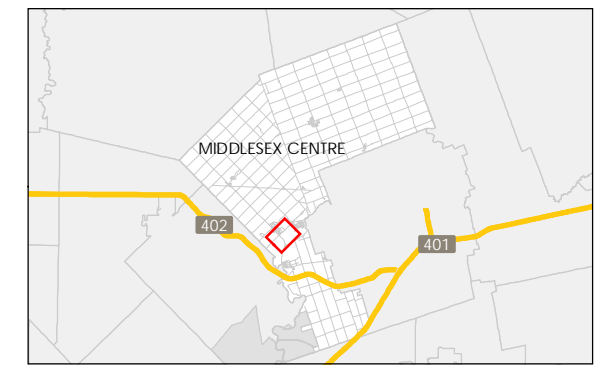
Title: Komoka Drain No. 1 Alternatives



- Legend**
- Elevation Contour
 - Development Area
 - Storm Catchment Area
 - Settlement Boundary
- Existing Infrastructure:**
- Outlet
 - Storm Sewer
 - Municipal Drain
 - Watermain
- Proposed Infrastructure:**
- Potential SWM Pond Location



- Notes**
1. Coordinate System: NAD 1983 UTM Zone 17N
 2. Parcels © Teranet Enterprises Inc. and its suppliers. All rights reserved. Not a plan of survey.
 3. 2015 orthoimagery © 2018 of the Queen's Printer for Ontario. All rights reserved.



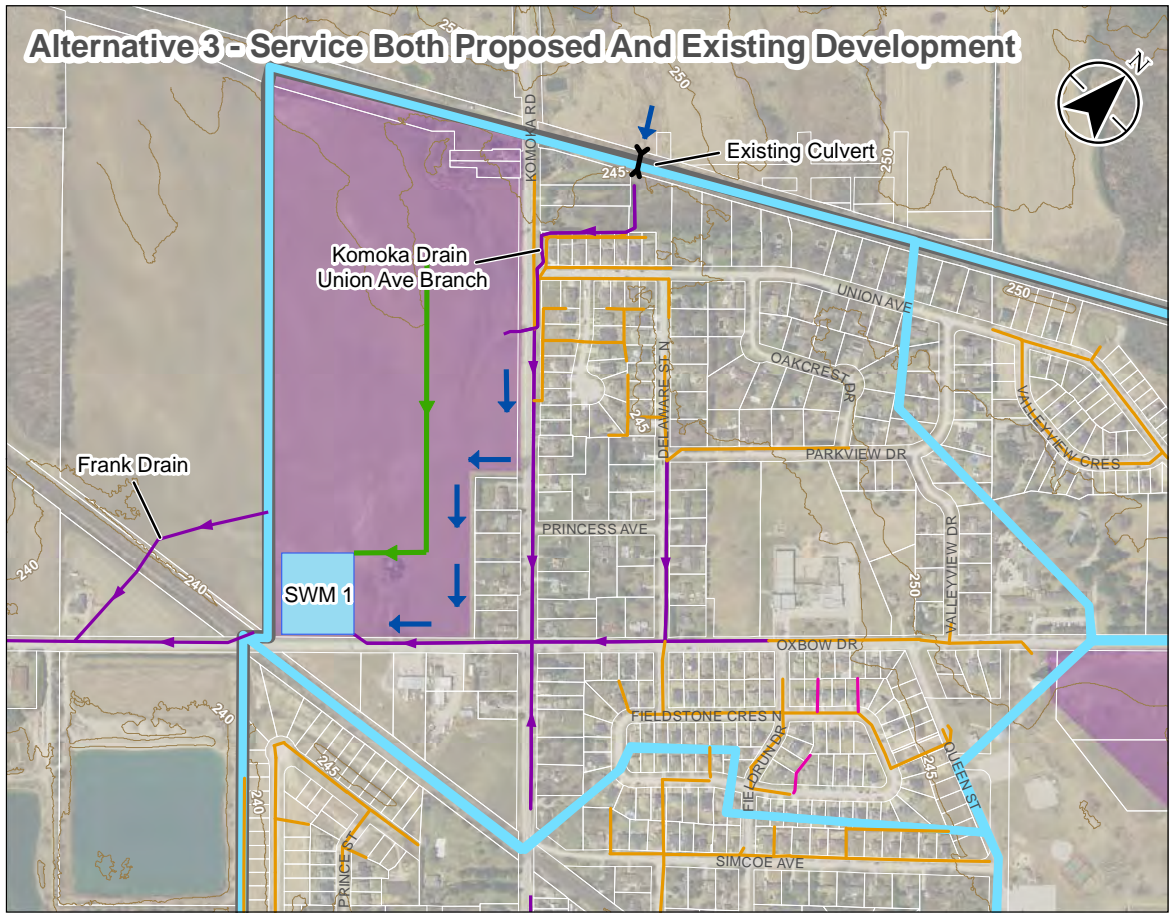
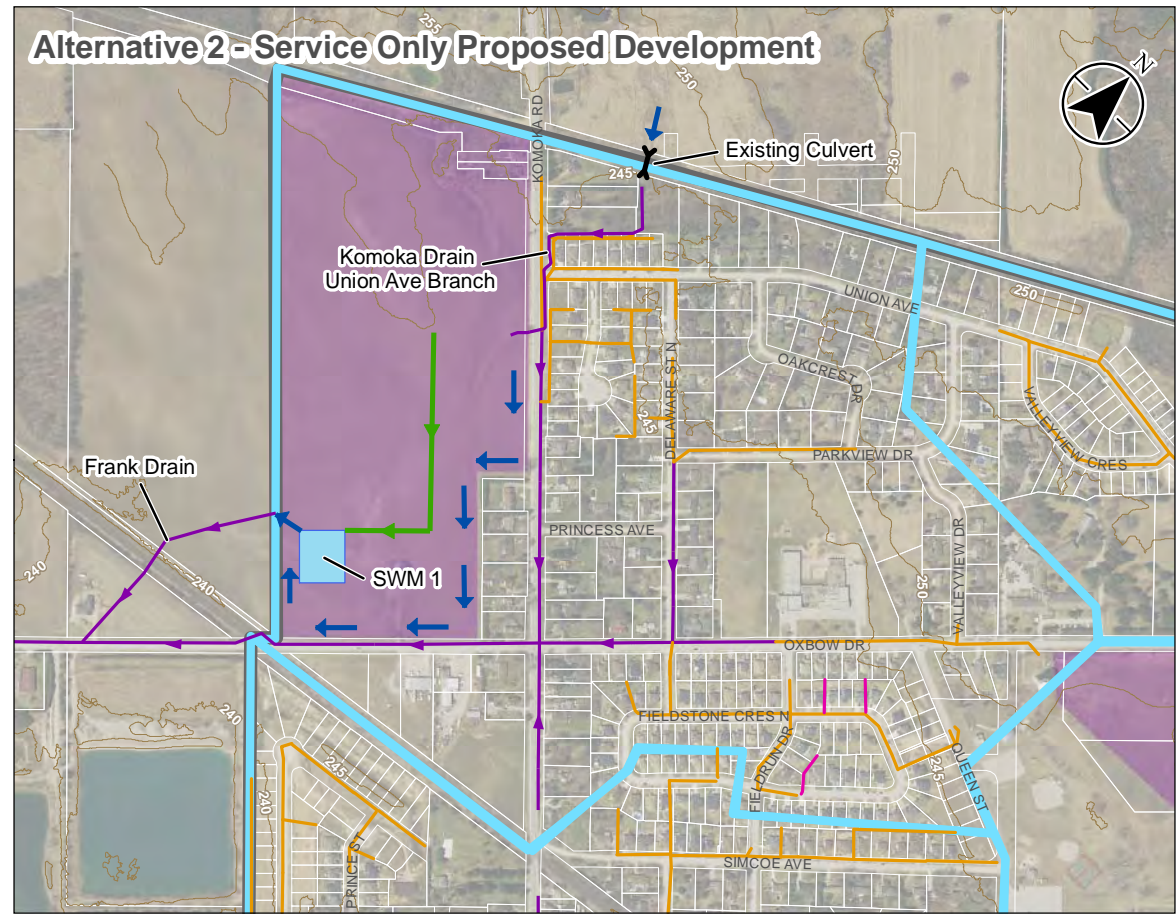
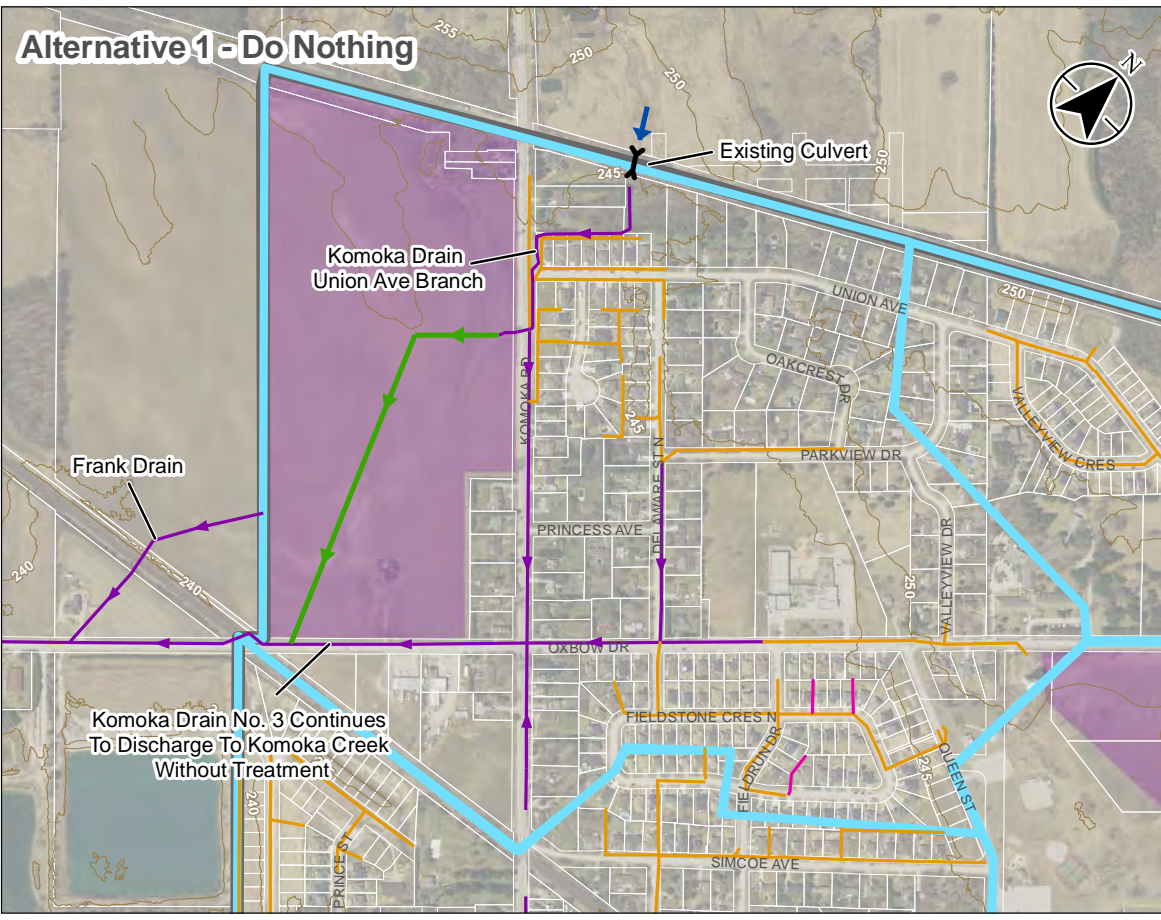
Project Location: Municipality of Middlesex Centre
 165630134 REVA
 Prepared by ASB on 2020-03-10

Client/Project:
 MUNICIPALITY OF MIDDLESEX CENTRE
 STORM DRAINAGE MASTER PLAN MUNICIPAL CLASS
 ENVIRONMENTAL ASSESSMENT

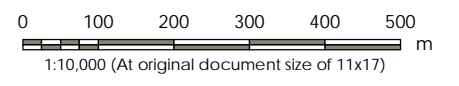
Figure No.
 B3-5c

Title
 Komoka Drain No. 1
 Potential SWM Pond Locations

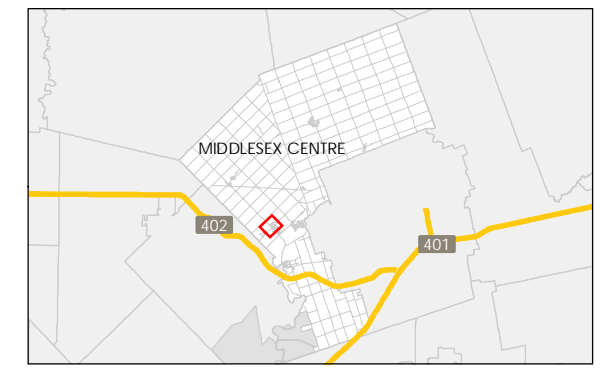
\\CA\0217\FPP\SS01\work_group\0165630134\preliminary\analysis\kgp.mxd\Options.mxd\Options.mxd
 Revised: 2020-03-10 By: albrown



- Legend**
- Elevation Contour
 - Development Area
 - Storm Catchment Area
 - Settlement Boundary
- Existing Infrastructure:**
- Storm Sewer
 - Perforated Subdrain
 - Municipal Drain
- Proposed Infrastructure:**
- Overland Flow Direction
 - Storm Sewer
 - SWM Facility



- Notes**
1. Coordinate System: NAD 1983 UTM Zone 17N
 2. Parcels © Teranet Enterprises Inc. and its suppliers. All rights reserved. Not a plan of survey.
 3. 2015 orthoimagery © 2018 of the Queen's Printer for Ontario. All rights reserved.



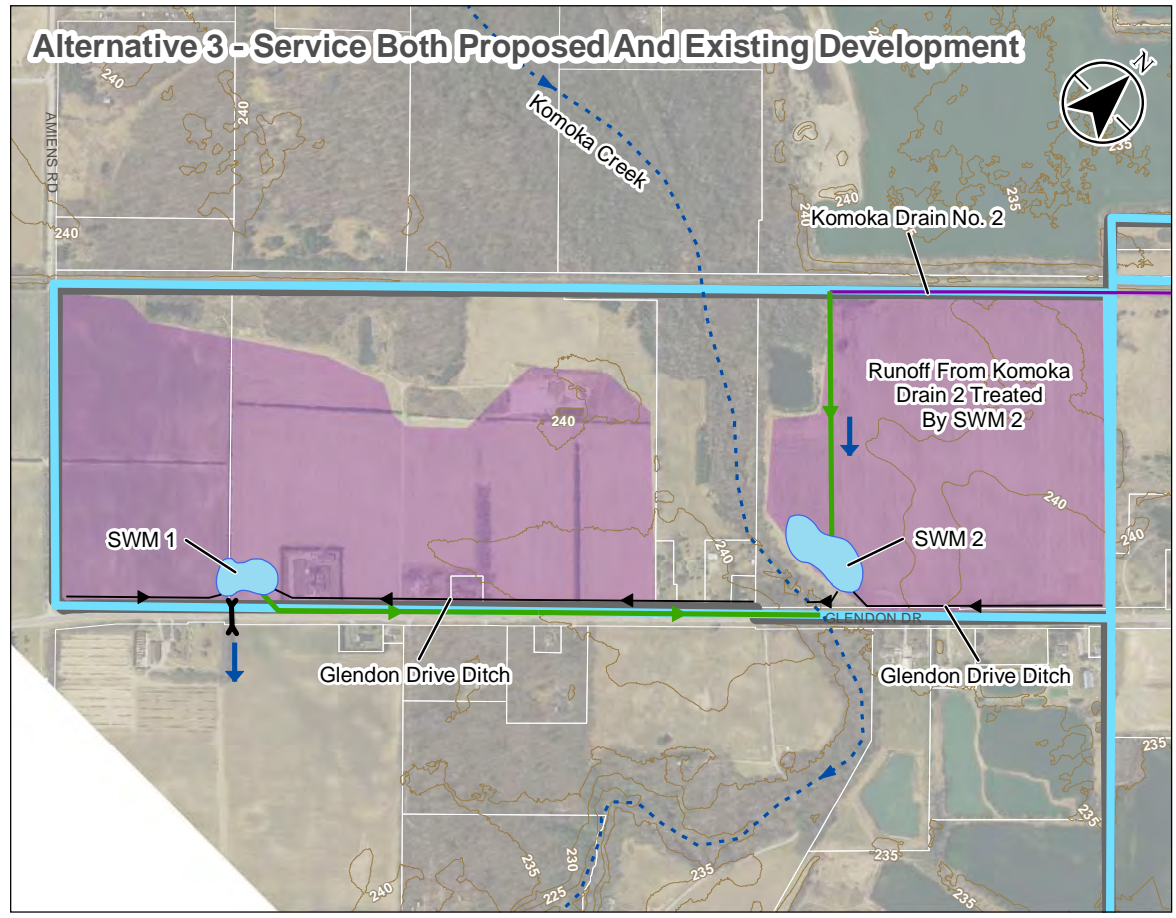
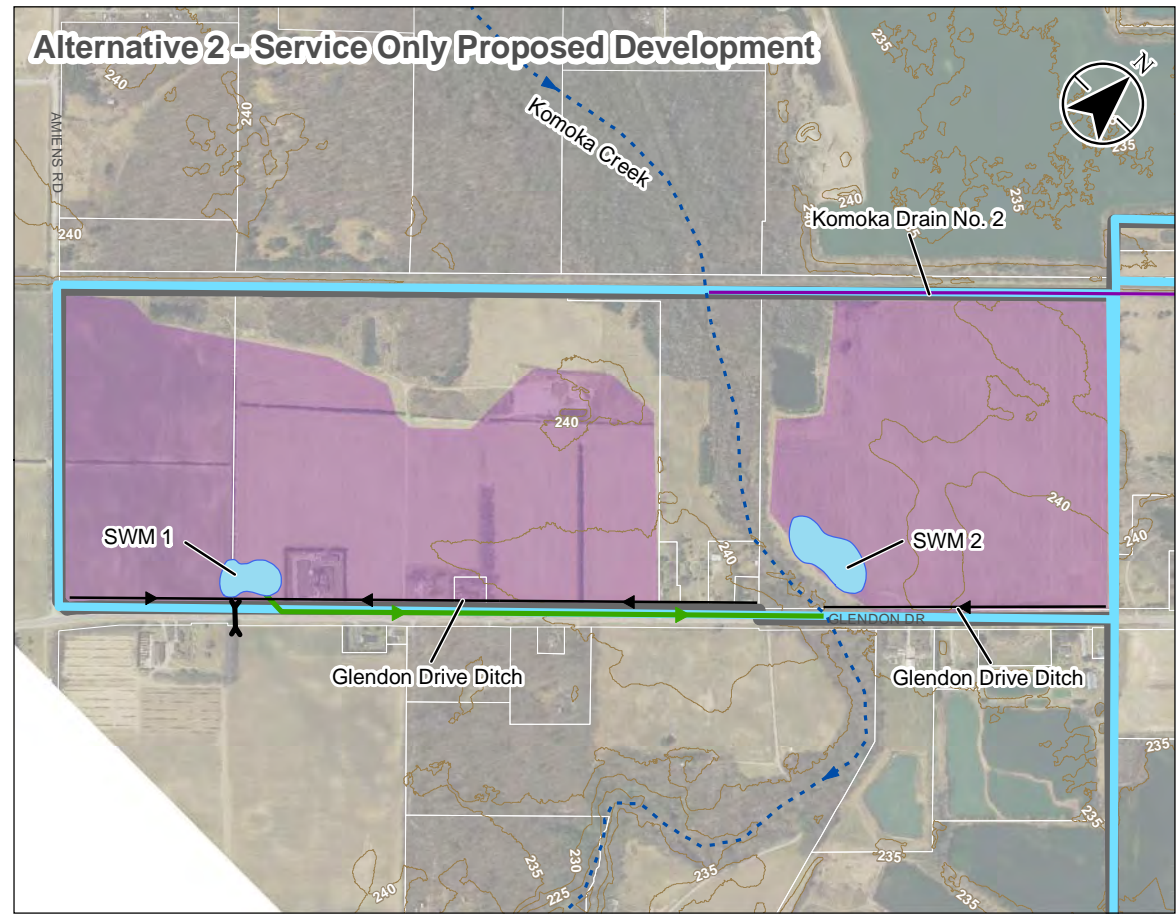
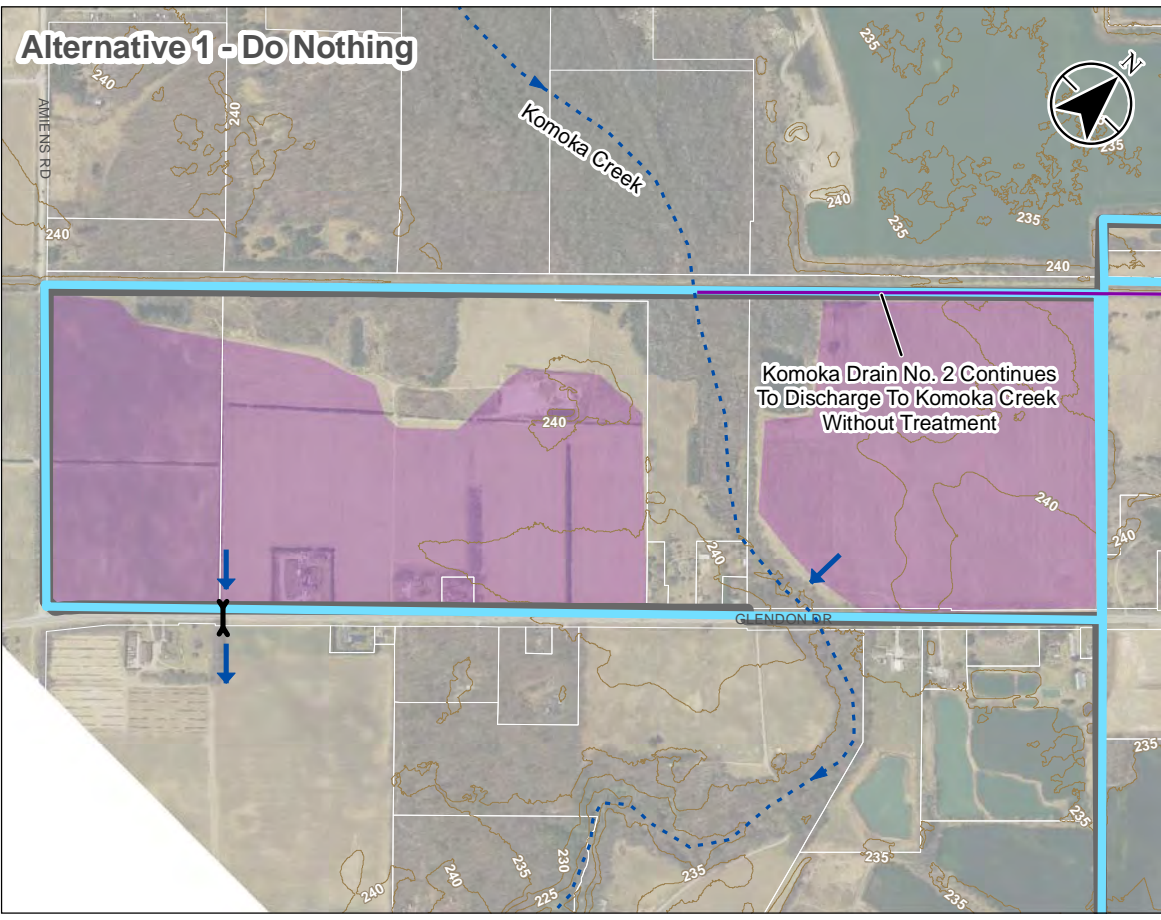
Project Location: Municipality of Middlesex Centre
 165630134 REVA
 Prepared by ASB on 2020-03-10

Client/Project: MUNICIPALITY OF MIDDLESEX CENTRE
 STORM DRAINAGE MASTER PLAN MUNICIPAL CLASS ENVIRONMENTAL ASSESSMENT

Figure No.: B3-6

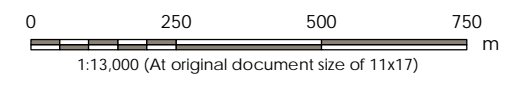
Title: Komoka Drain No. 3 Alternatives

\\CA\0217\FPP\01\work_group\0165630134\preliminary\analysis\sga.mxd\Options\165630134_O.P.F. B3-6_KomokaDrain3.mxd
 Revised: 2020-03-10 By: abrown

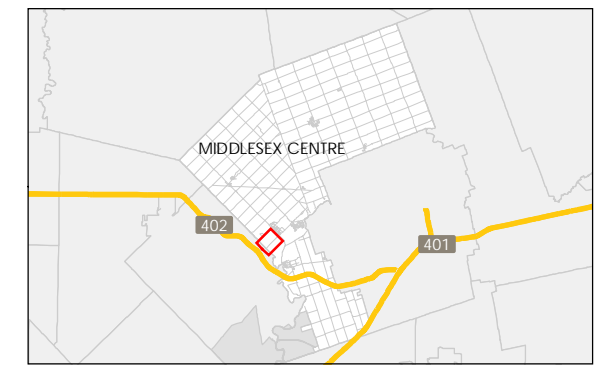


Legend

- Elevation Contour
- Development Area
- Storm Catchment Area
- Settlement Boundary
- Existing Infrastructure:**
- Outlet
- Municipal Drain
- Creek
- Proposed Infrastructure:**
- Overland Flow Direction
- Storm Sewer
- Glendon Drive Ditch
- SWM Facility



- Notes
1. Coordinate System: NAD 1983 UTM Zone 17N
 2. Parcels © Teranet Enterprises Inc. and its suppliers. All rights reserved. Not a plan of survey.
 3. 2015 orthoimagery © 2018 of the Queen's Printer for Ontario. All rights reserved.



Project Location: Municipality of Middlesex Centre
 165630134 REVA
 Prepared by ASB on 2020-03-10

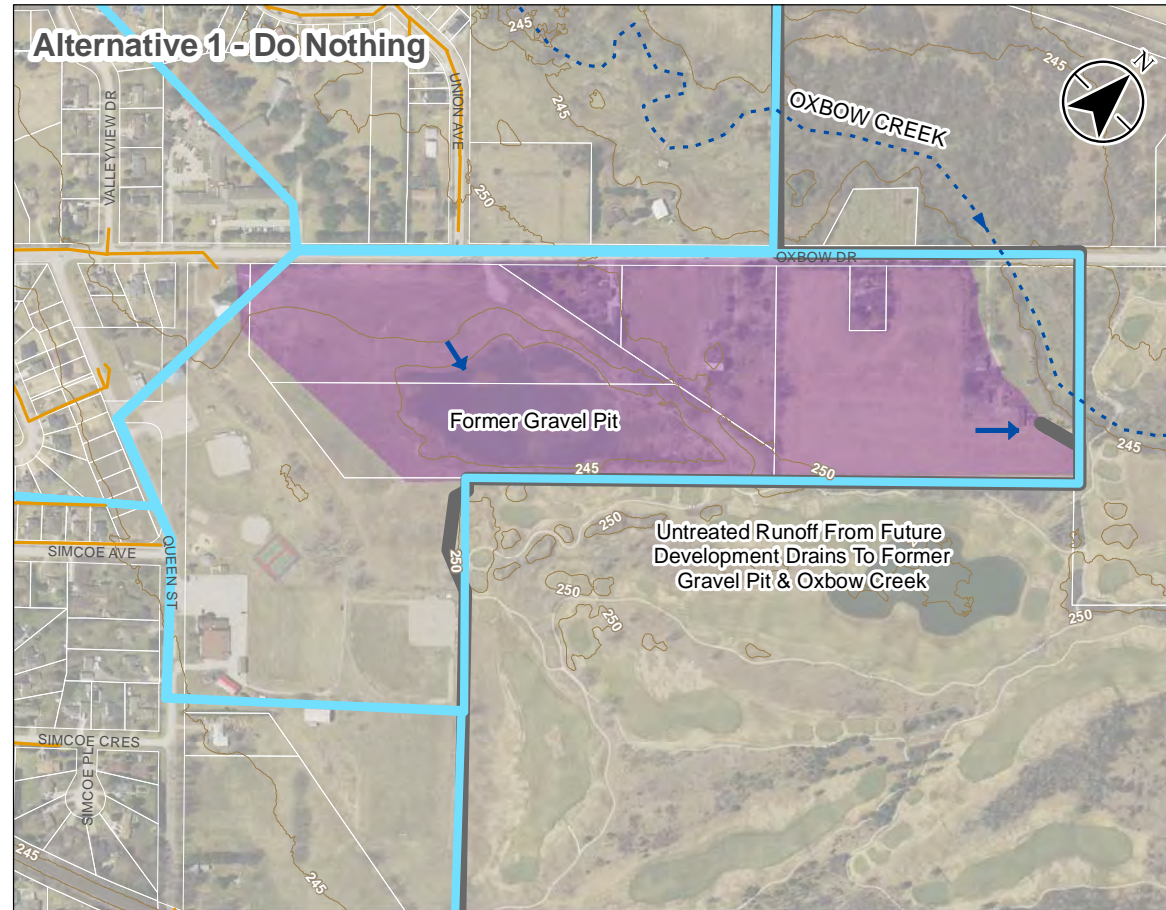
Client/Project: MUNICIPALITY OF MIDDLESEX CENTRE
 STORM DRAINAGE MASTER PLAN MUNICIPAL CLASS ENVIRONMENTAL ASSESSMENT

Figure No. B3-7

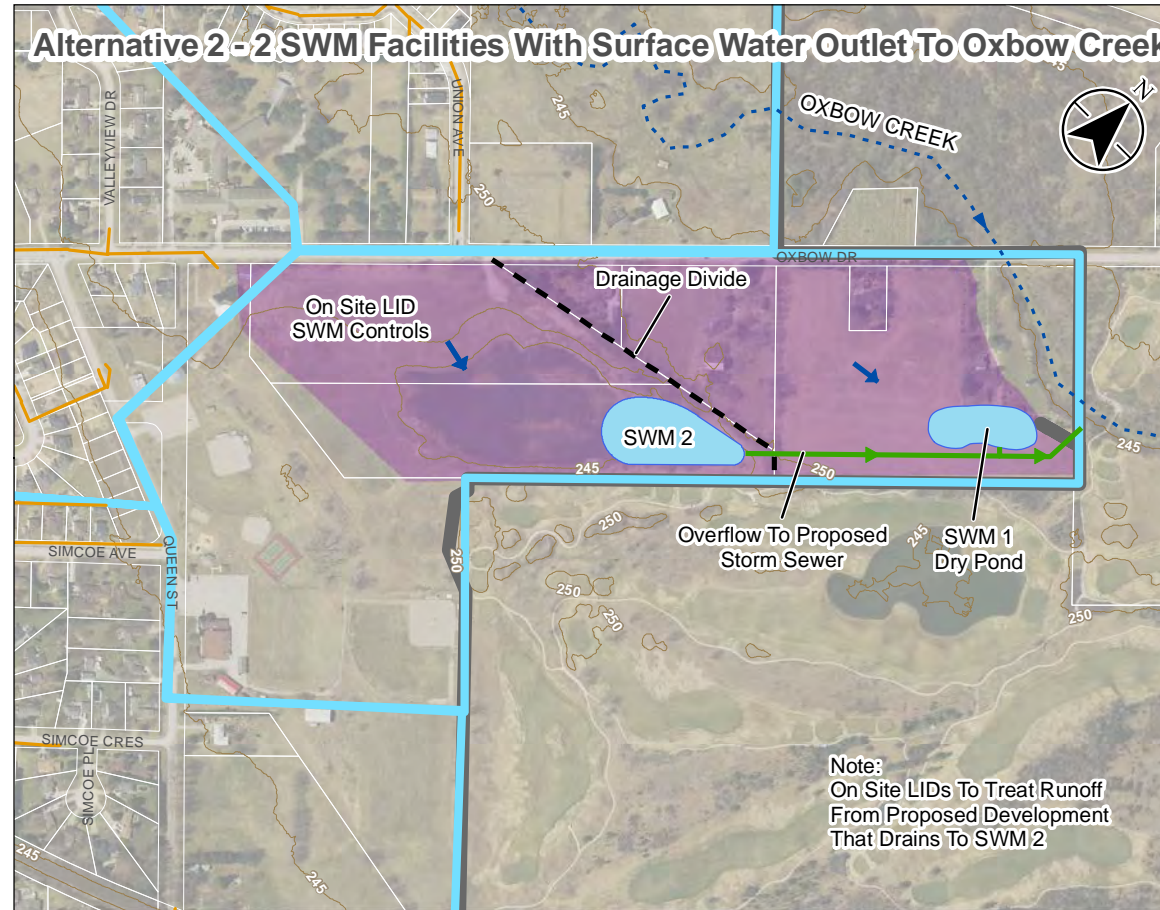
Title: West Komoka Development Area Alternatives

\\CA\217\FPP\501\work_group\0165630134\preliminary\analysis\ga.mxd\Options\165630134.OPF.B3-7_KomokaDA.mxd Revised: 2020-03-10 By: albrown

Alternative 1 - Do Nothing

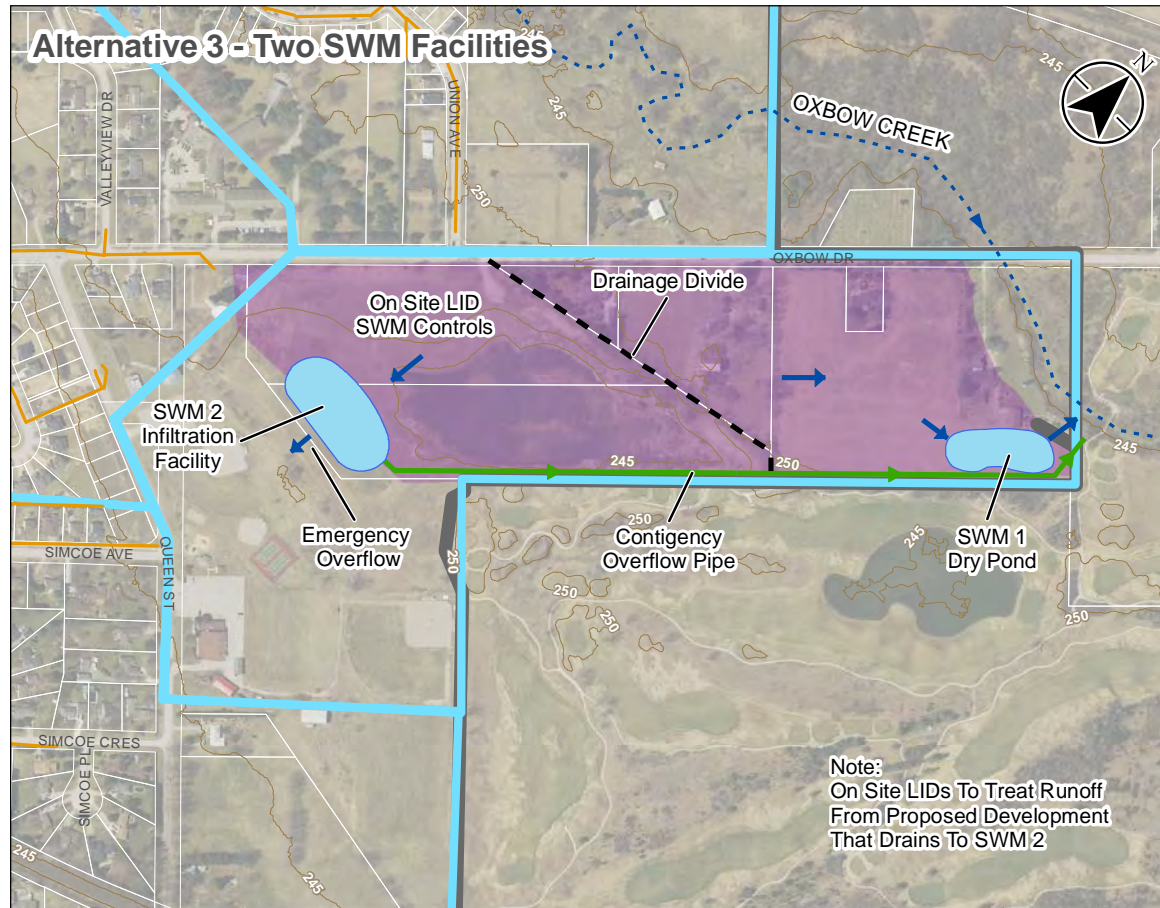


Alternative 2 - 2 SWM Facilities With Surface Water Outlet To Oxbow Creek



Note:
On Site LIDs To Treat Runoff
From Proposed Development
That Drains To SWM 2

Alternative 3 - Two SWM Facilities

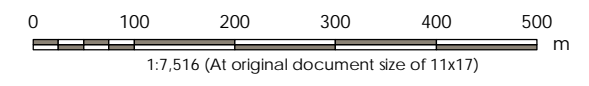


Note:
On Site LIDs To Treat Runoff
From Proposed Development
That Drains To SWM 2

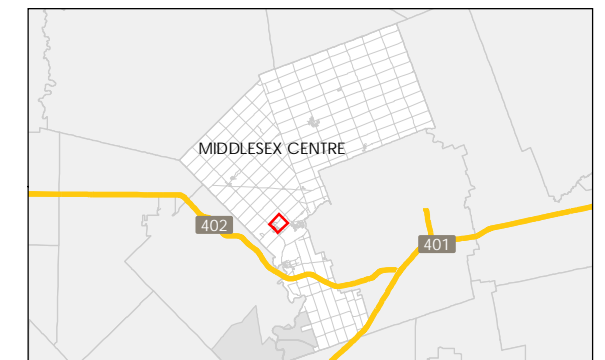


Legend

- Elevation Contour
- Development Area
- Storm Catchment Area
- Settlement Boundary
- Existing Infrastructure:**
- Outlet
- Storm Sewer
- Creek
- Proposed Infrastructure:**
- Overland Flow Direction
- Storm Sewer
- Drainage Divide
- SWM Facility



- Notes
1. Coordinate System: NAD 1983 UTM Zone 17N
 2. Parcels © Teranet Enterprises Inc. and its suppliers. All rights reserved. Not a plan of survey
 3. 2015 orthoimagery © 2018 of the Queen's Printer for Ontario. All rights reserved.



Project Location: Municipality of Middlesex Centre
 165630134 REVA
 Prepared by ASB on 2020-07-10

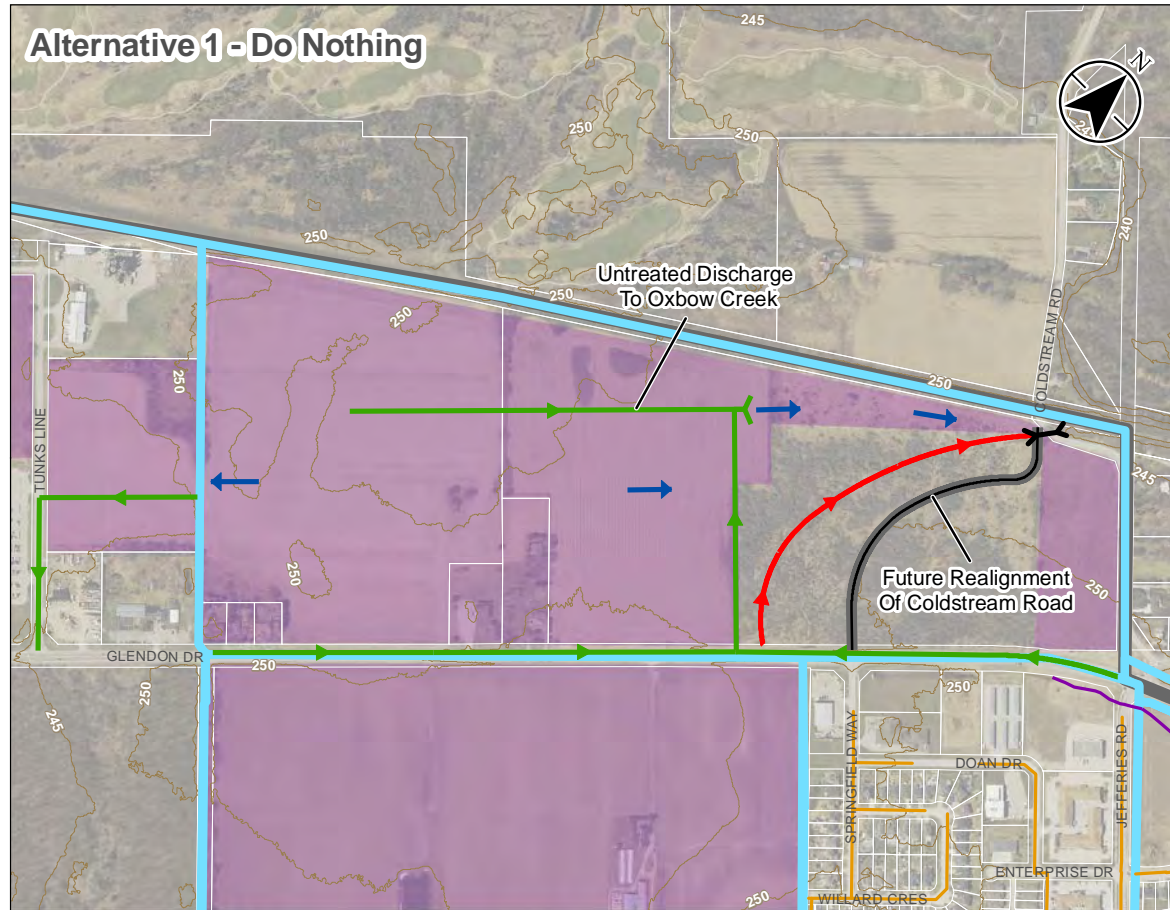
Client/Project:
 MUNICIPALITY OF MIDDLESEX CENTRE
 STORM DRAINAGE MASTER PLAN MUNICIPAL CLASS
 ENVIRONMENTAL ASSESSMENT

Figure No.
 B3-8

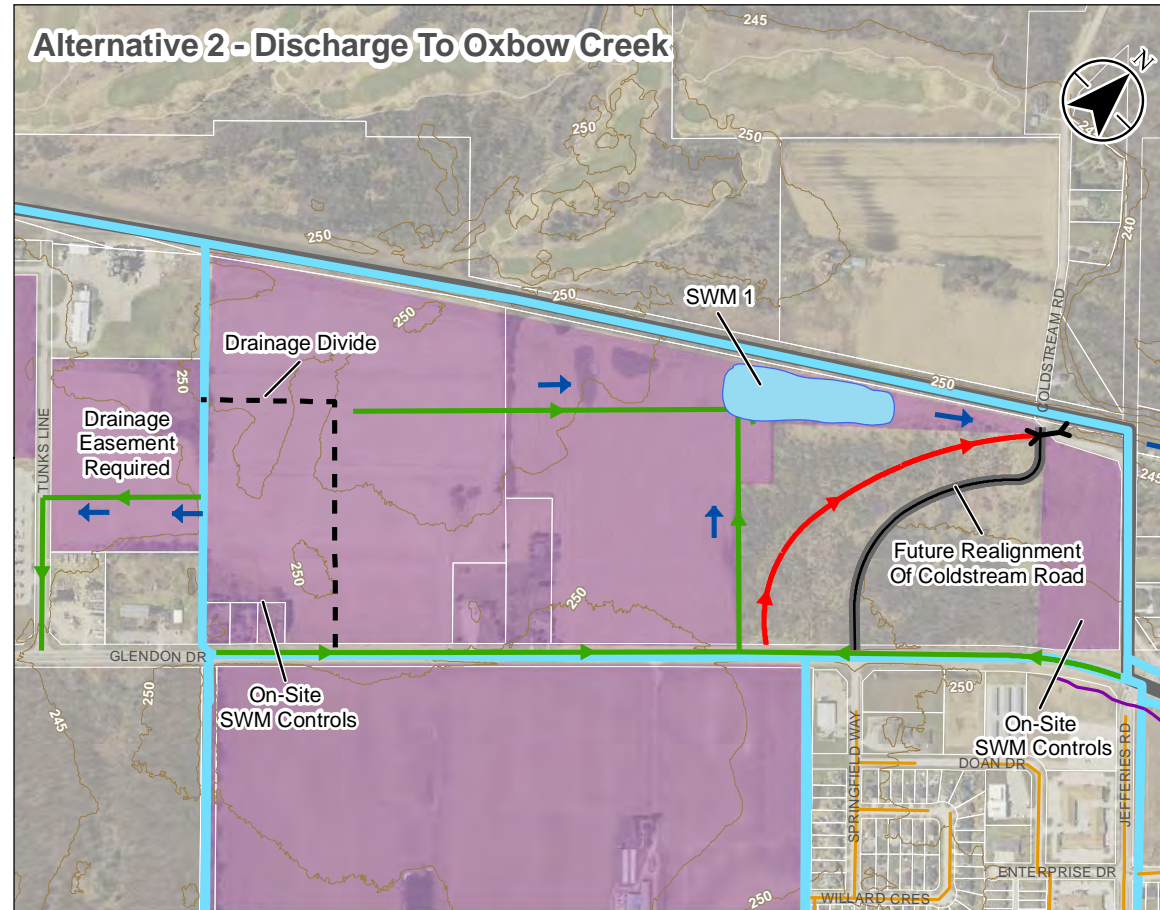
Title
 North East Komoka Development Area
 Alternatives

\\CA\217\PPFS\01\work_group\0165630134\preliminary\analysis\sga.mxd\Options\165630134.OPF_BB_8_Komoka\EDA.mxd Revised: 2020-07-10 By: albrown

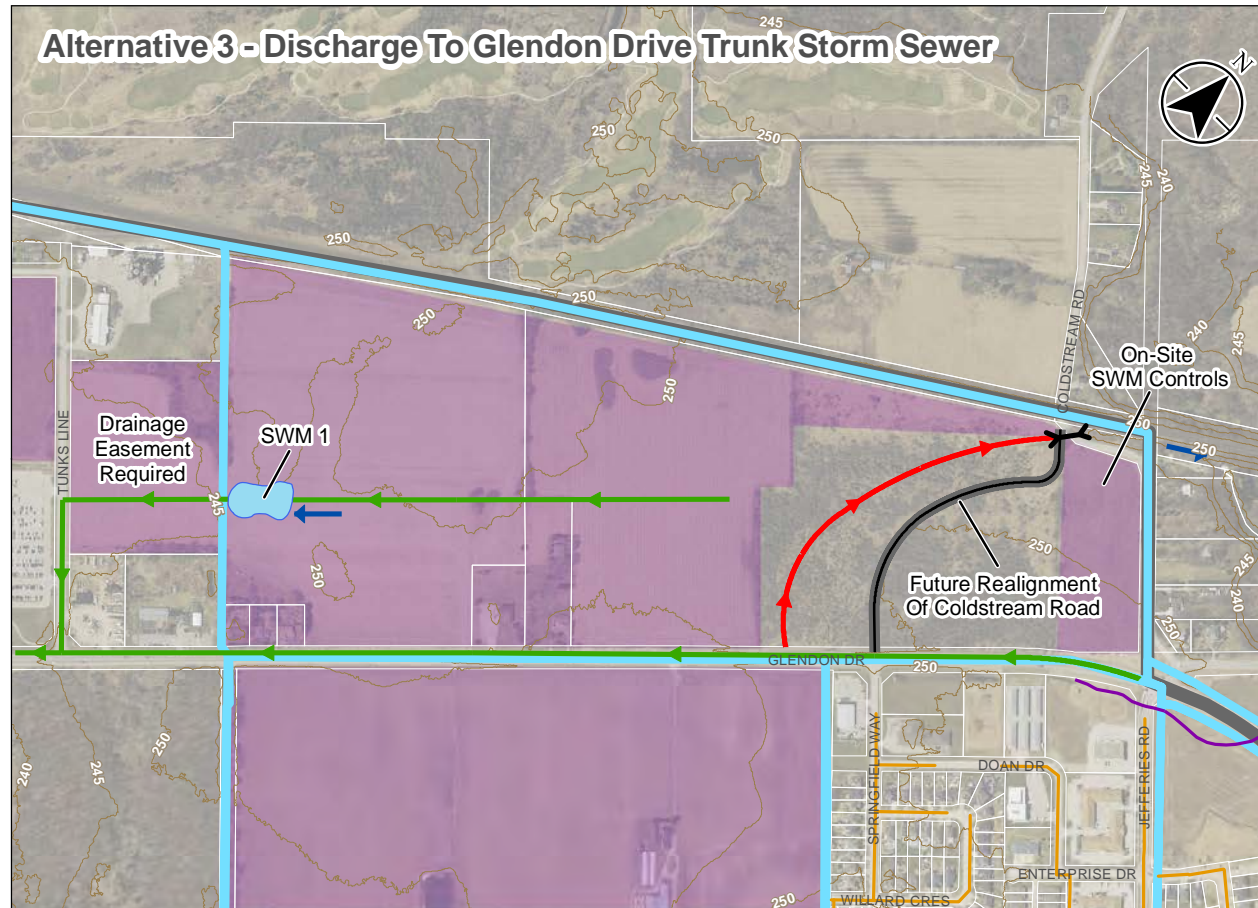
Alternative 1 - Do Nothing



Alternative 2 - Discharge To Oxbow Creek

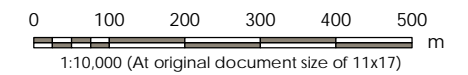


Alternative 3 - Discharge To Glendon Drive Trunk Storm Sewer

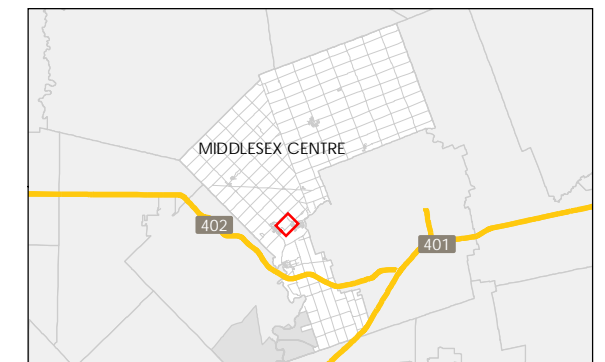


Legend

- Elevation Contour
- Development Area
- Storm Catchment Area
- Settlement Boundary
- Existing Infrastructure:**
- Outlet
- Storm Sewer
- Municipal Drain
- Proposed Infrastructure:**
- Overland Flow Direction
- Storm Sewer
- Existing Swale
- Drainage Divide
- SWM Facility



- Notes
1. Coordinate System: NAD 1983 UTM Zone 17N
 2. Parcels © Teranet Enterprises Inc. and its suppliers. All rights reserved. Not a plan of survey
 3. 2015 orthoimagery © 2018 of the Queen's Printer for Ontario. All rights reserved.

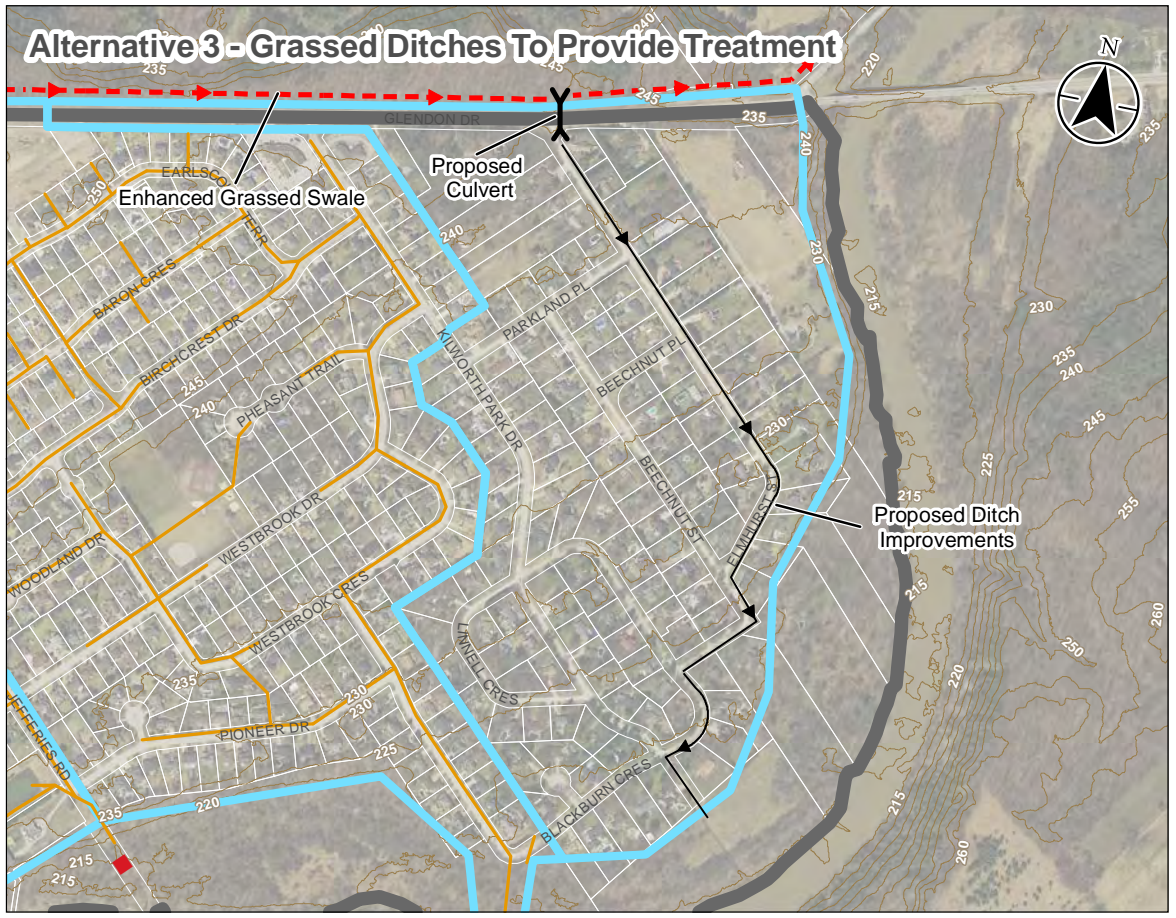
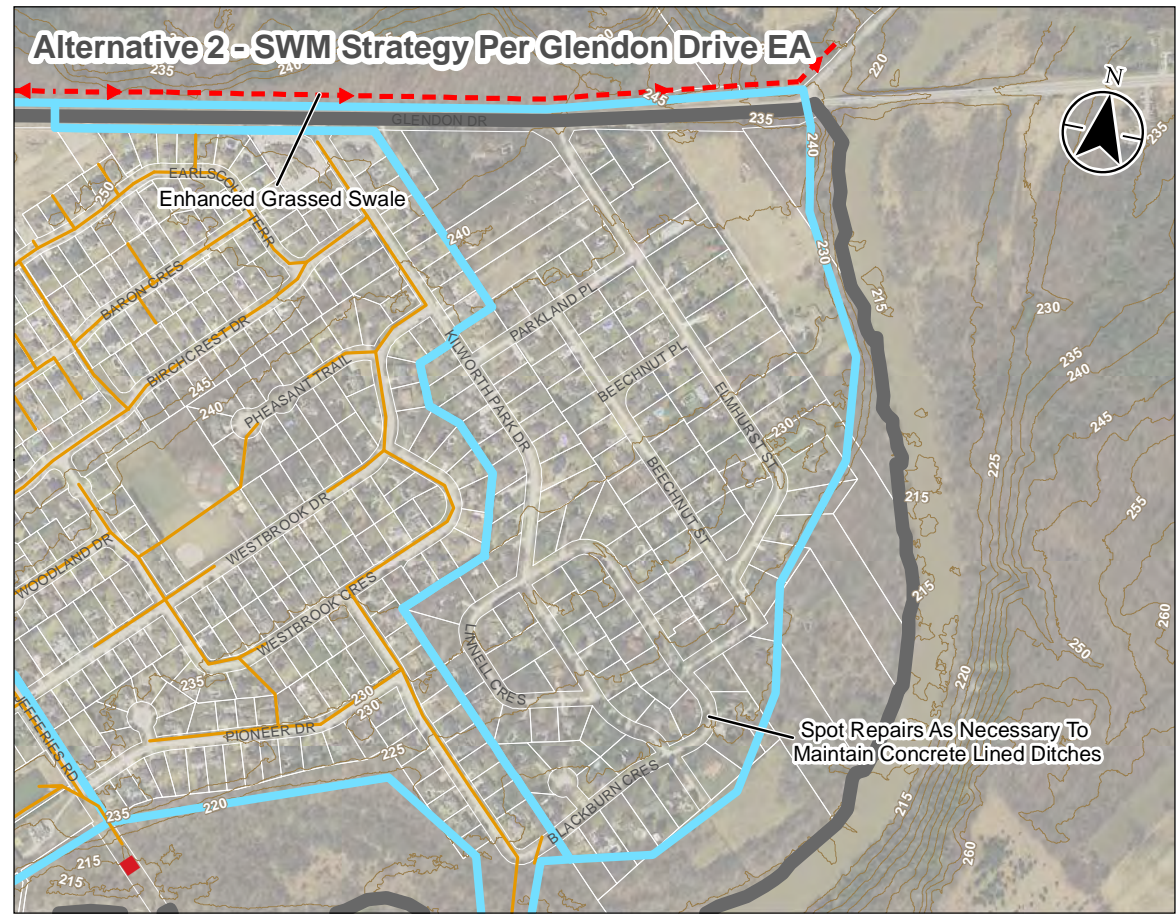
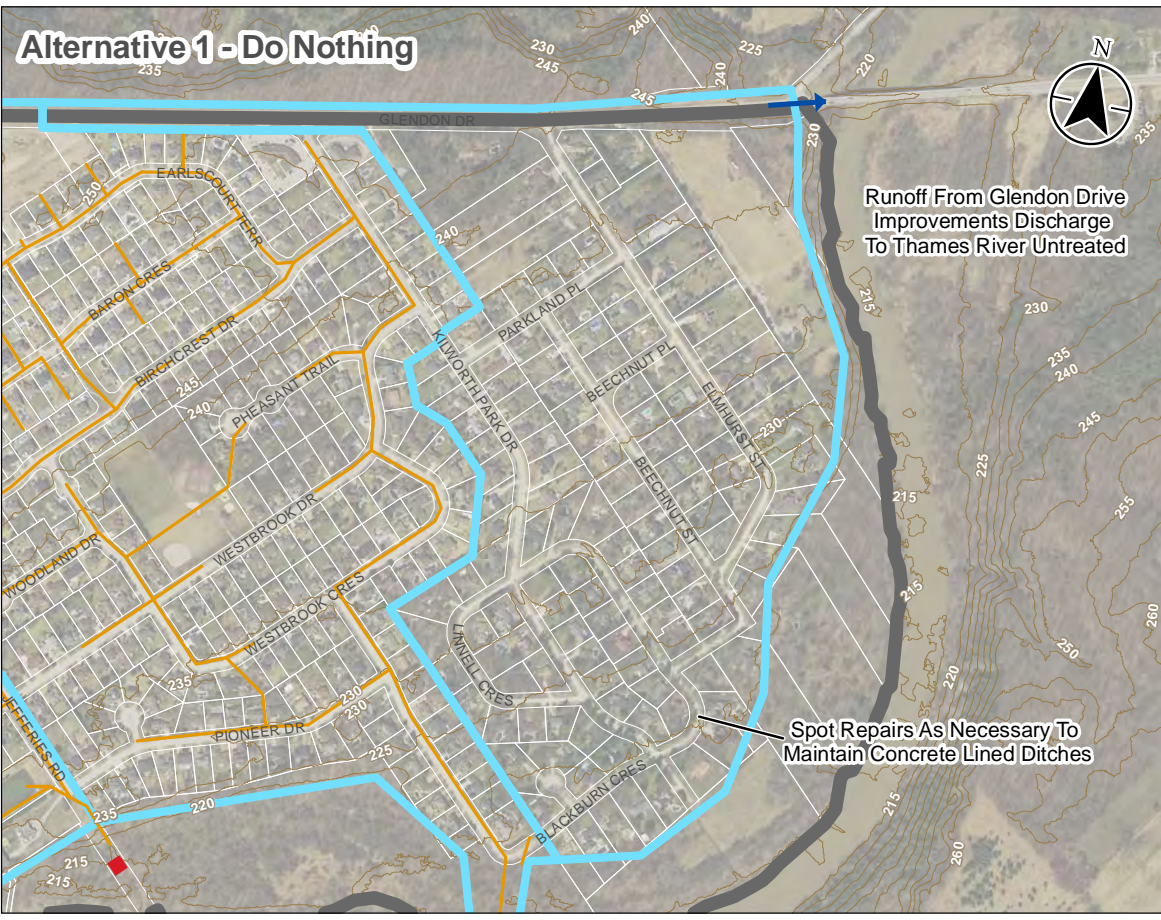


Project Location: Municipality of Middlesex Centre
 165630134 REVA
 Prepared by ASB on 2020-03-10

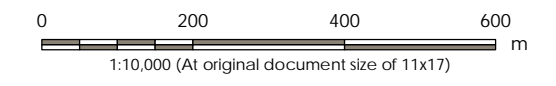
Client/Project: MUNICIPALITY OF MIDDLESEX CENTRE
 STORM DRAINAGE MASTER PLAN MUNICIPAL CLASS ENVIRONMENTAL ASSESSMENT

Figure No. B3-9

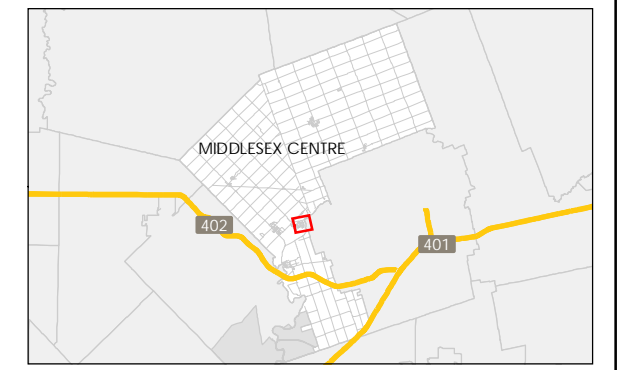
Title: Kilworth Glendon Drive Area Alternatives



- Legend
- Elevation Contour
 - Storm Catchment Area
 - Settlement Boundary
 - Existing Infrastructure:**
 - Outlet
 - Storm Sewer
 - Proposed Infrastructure:**
 - Overland Flow Direction
 - Ditch Improvements
 - Enhanced Grassed Swale



- Notes
1. Coordinate System: NAD 1983 UTM Zone 17N
 2. Parcels © Teranet Enterprises Inc. and its suppliers. All rights reserved. Not a plan of survey
 3. 2015 orthoimagery © 2018 of the Queen's Printer for Ontario. All rights reserved.



Project Location: Municipality of Middlesex Centre
 165630134 REVA
 Prepared by ASB on 2020-03-10

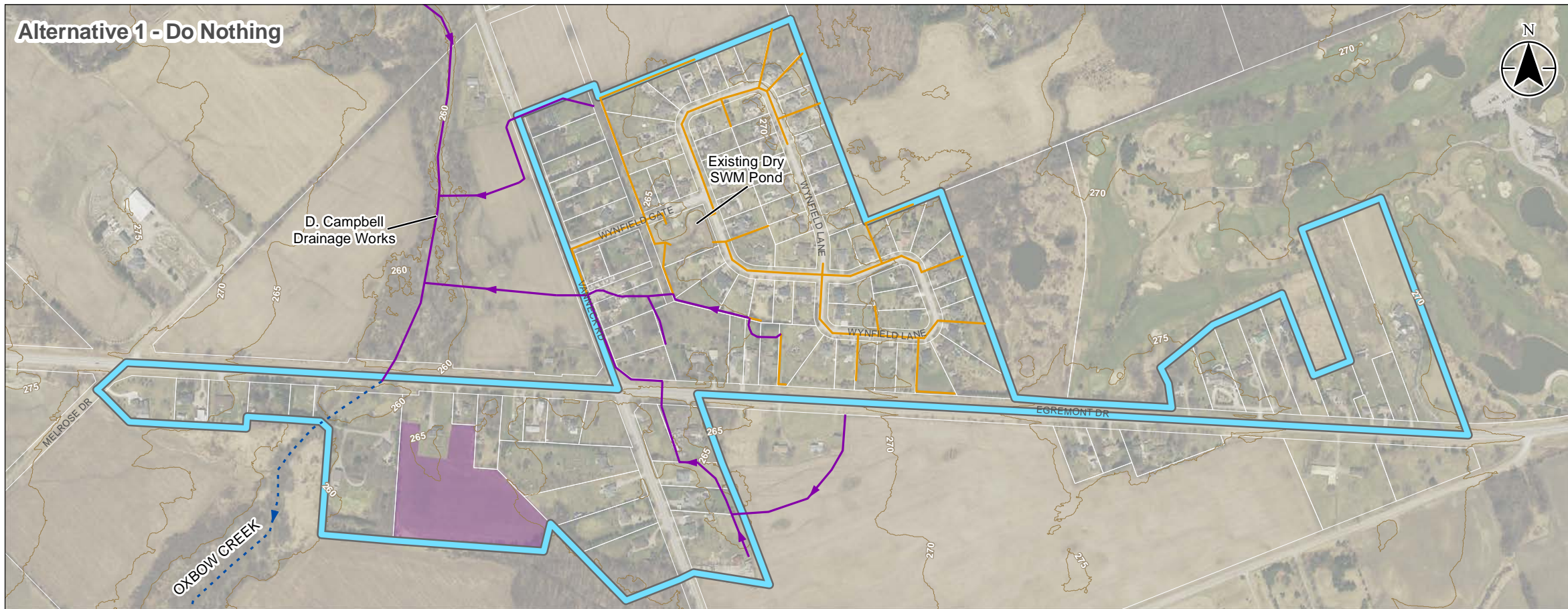
Client/Project: MUNICIPALITY OF MIDDLESEX CENTRE
 STORM DRAINAGE MASTER PLAN MUNICIPAL CLASS ENVIRONMENTAL ASSESSMENT

Figure No. B3-10

Title: Kilworth East Alternatives

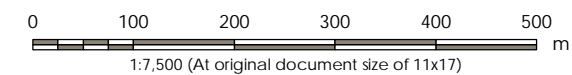
\\CA\217\FPP\SS01\work_group\0165630134\preliminary\analysis\sga.mxd\Options\165630134.OPF:IB:10_KomokaParkE.mxd Revised: 2020-03-10 By: albrown

Alternative 1 - Do Nothing

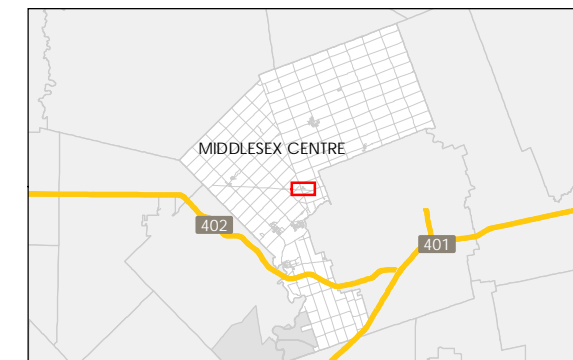


Legend

- Elevation Contour
- Development Area
- Storm Catchment Area
- Settlement Boundary
- Existing Infrastructure:**
- Outlet
- Storm Sewer
- Municipal Drain
- Creek
- Proposed Infrastructure:**
- Storm Sewer



- Notes**
1. Coordinate System: NAD 1983 UTM Zone 17N
 2. Parcels © Teranet Enterprises Inc. and its suppliers. All rights reserved. Not a plan of survey.
 3. 2015 orthoimagery © 2018 of the Queen's Printer for Ontario. All rights reserved.



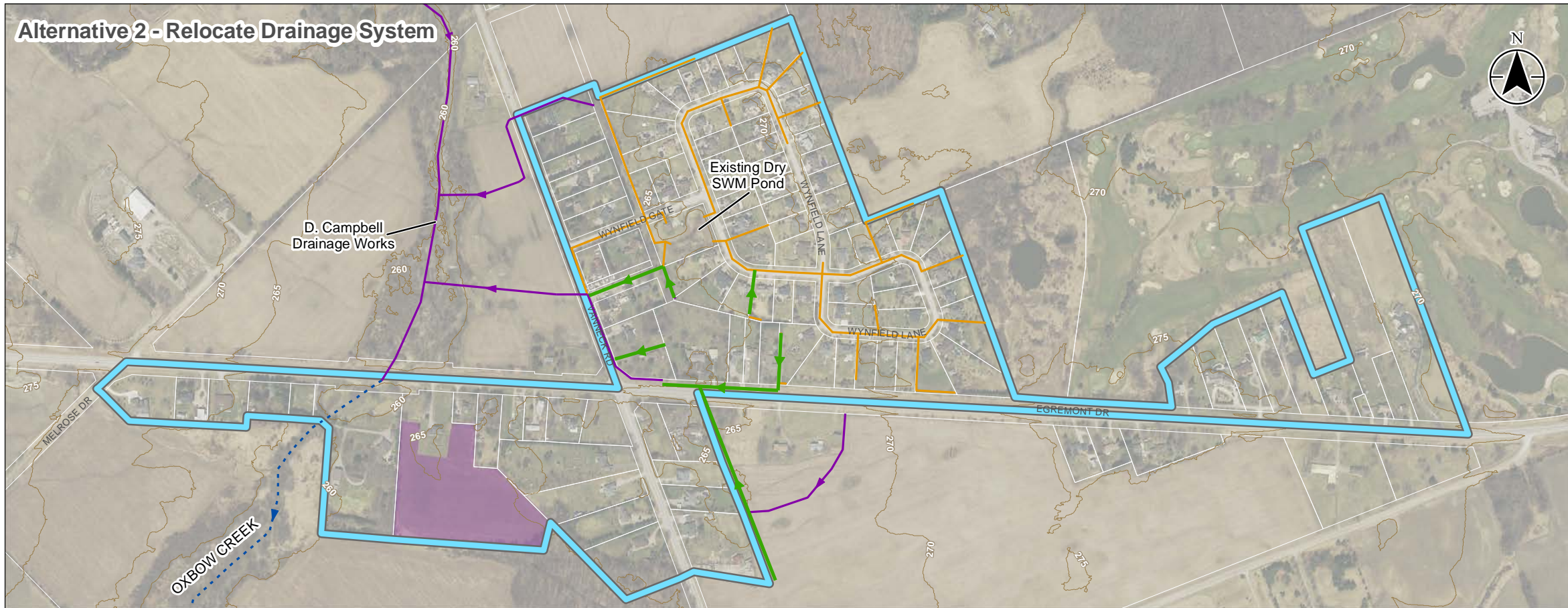
Project Location: Municipality of Middlesex Centre
 165630134 REVA
 Prepared by ASB on 2020-03-10

Client/Project:
 MUNICIPALITY OF MIDDLESEX CENTRE
 STORM DRAINAGE MASTER PLAN MUNICIPAL CLASS
 ENVIRONMENTAL ASSESSMENT

Figure No.
 B3-11

Title
 Melrose
 Alternatives

Alternative 2 - Relocate Drainage System



\\CA\217\FPP\501\work_group\0165630134\preliminary\analysis\sga.mxd\Options\165630134.OPF_IB3-11_Melrose.mxd Revised: 2020-03-10 By: albrown