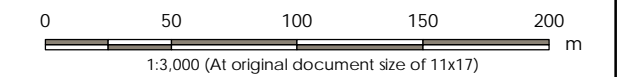
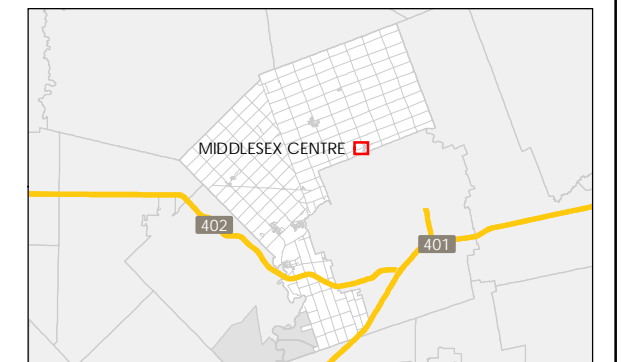


Legend

- Elevation Contour
- Development Area
- Storm Catchment Area
- Settlement Boundary
- Existing Infrastructure:**
- Outlet
- Storm Sewer
- Municipal Drain
- Proposed Infrastructure:**
- Overland Flow Direction
- Storm Sewer



- Notes
1. Coordinate System: NAD 1983 UTM Zone 17N
 2. Parcels © Teranet Enterprises Inc. and its suppliers. All rights reserved. Not a plan of survey
 3. 2015 orthoimagery © 2018 of the Queen's Printer for Ontario. All rights reserved.



Project Location: Municipality of Middlesex Centre
 165630134 REVA
 Prepared by KDB on 2020-03-10

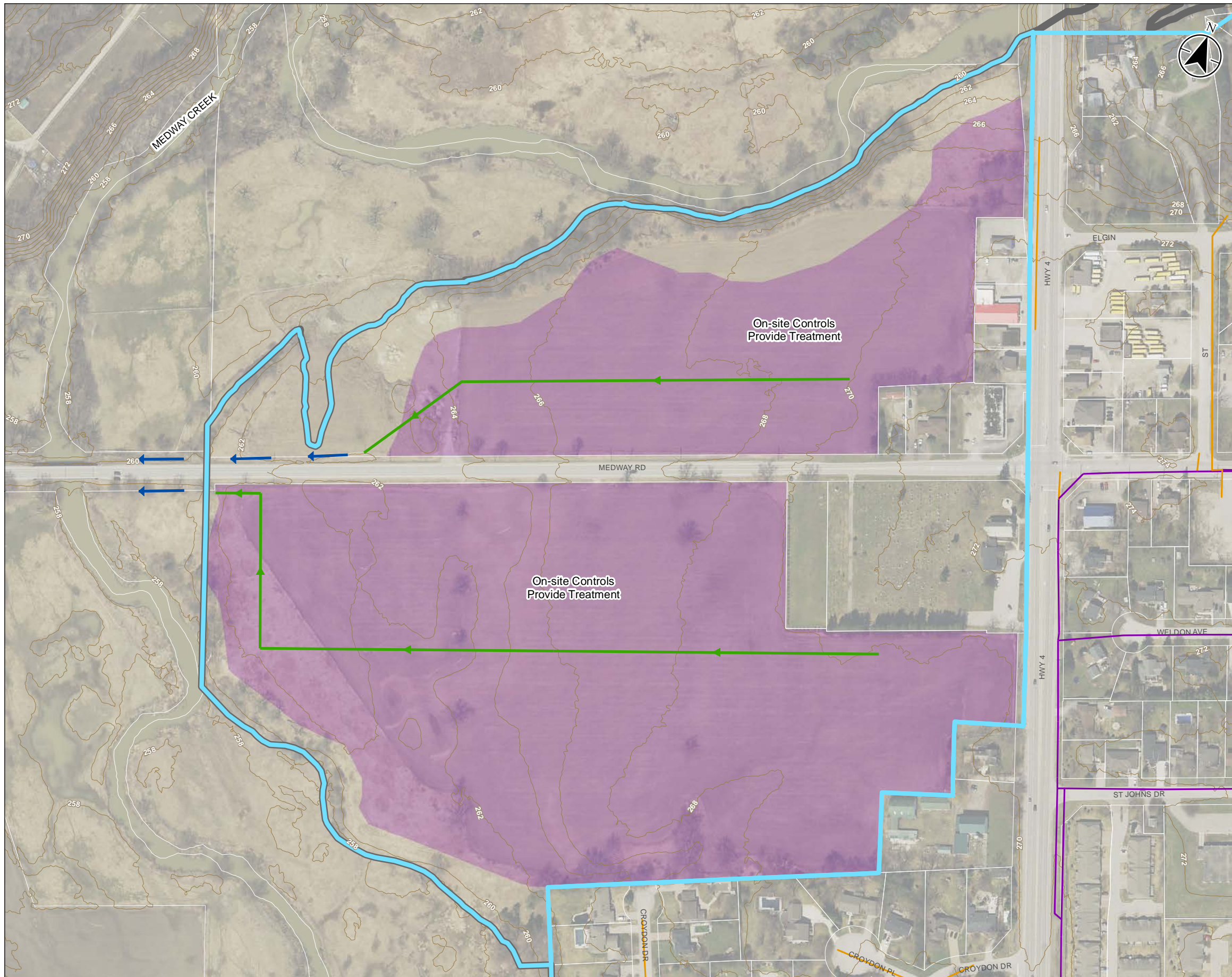
Client/Project: MUNICIPALITY OF MIDDLESEX CENTRE
 STORM DRAINAGE MASTER PLAN MUNICIPAL CLASS ENVIRONMENTAL ASSESSMENT

Figure No.

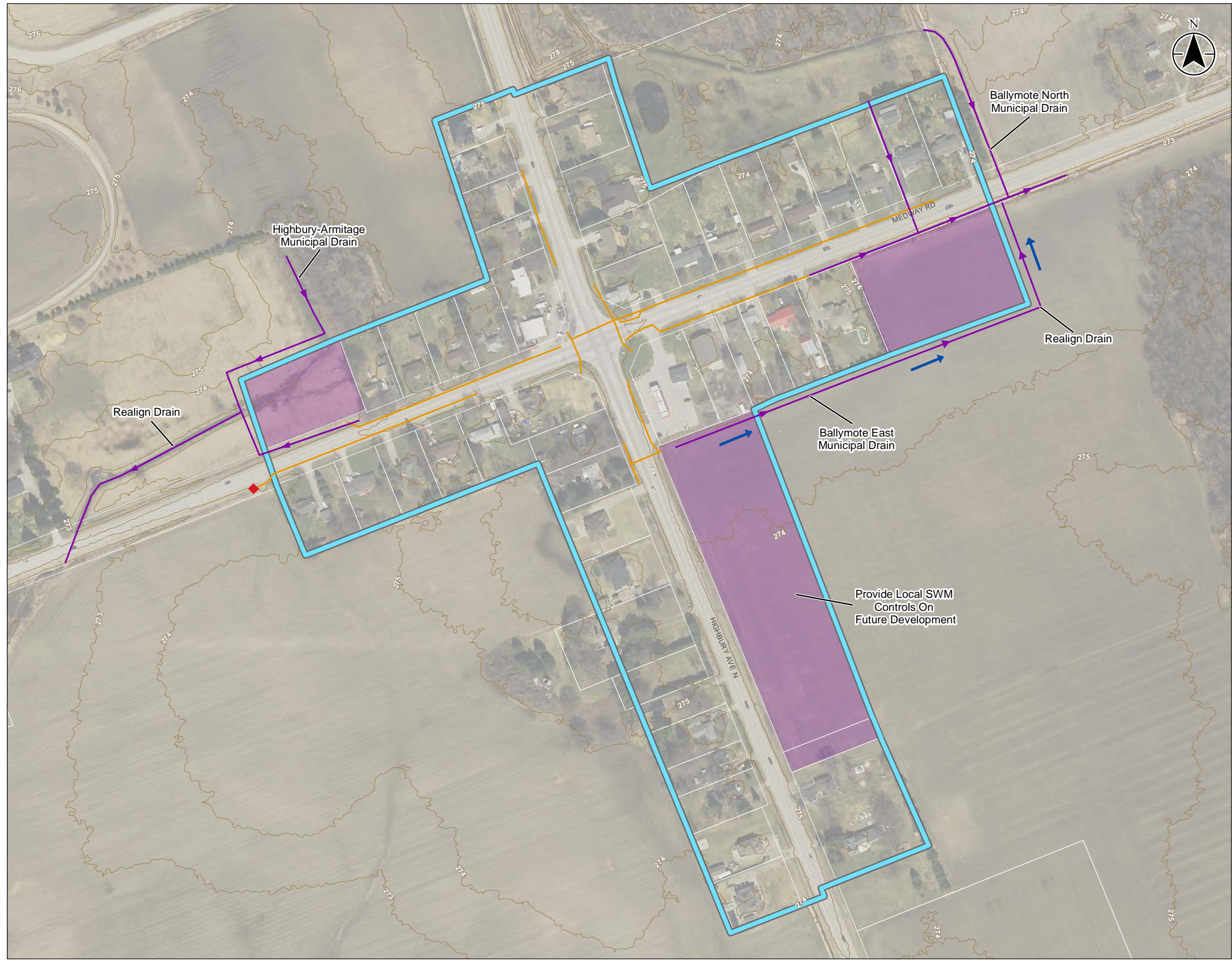
E-1

Title

Arva Development Area Preferred Alternative Local SWM Controls

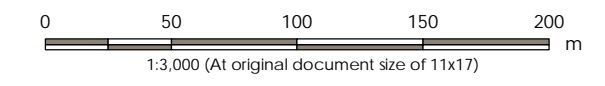


\\CA\0217\FPP\SS01\work_group\0165630134\preliminary\analysis\sga.mxd\Preferred\165630134_DPT_B4-2_Ballymote.mxd Revised: 2020-07-10 By: abrown

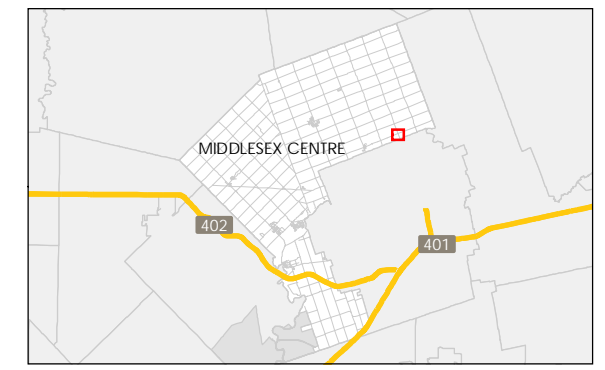


Legend

- Elevation Contour
- Development Area
- Storm Catchment Area
- Settlement Boundary
- Existing Infrastructure:**
- Outlet
- Storm Sewer
- Municipal Drain
- Proposed Infrastructure:**
- Overland Flow Direction
- Storm Sewer



- Notes**
1. Coordinate System: NAD 1983 UTM Zone 17N
 2. Parcels © Teranet Enterprises Inc. and its suppliers. All rights reserved. Not a plan of survey.
 3. 2015 orthoimagery © 2018 of the Queen's Printer for Ontario. All rights reserved.



Project Location: Municipality of Middlesex Centre
 165630134 REVA
 Prepared by KDB on 2020-07-10

Client/Project:
MUNICIPALITY OF MIDDLESEX CENTRE
STORM DRAINAGE MASTER PLAN MUNICIPAL CLASS
ENVIRONMENTAL ASSESSMENT

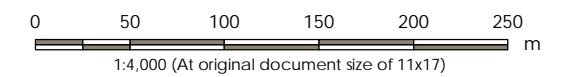
Figure No.

E-2

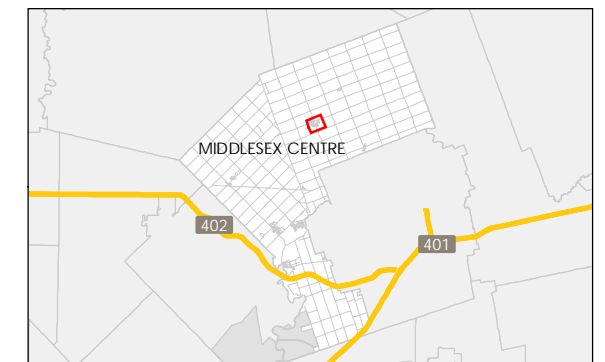
Title:
Ballymote Preferred Alternative
On-Site SWM Controls

Legend

- Elevation Contour
- Development Area
- Storm Catchment Area
- Settlement Boundary
- Existing Infrastructure:**
 - Outlet
 - Storm Sewer
 - Municipal Drain
- Proposed Infrastructure:**
 - Overland Flow Direction
 - Storm Sewer



- Notes
1. Coordinate System: NAD 1983 UTM Zone 17N
 2. Parcels © Teranet Enterprises Inc. and its suppliers. All rights reserved. Not a plan of survey.
 3. 2015 orthoimagery © 2018 of the Queen's Printer for Ontario. All rights reserved.



Project Location: Municipality of Middlesex Centre
 165630134 REVA
 Prepared by ASB on 2020-07-10

Client/Project: MUNICIPALITY OF MIDDLESEX CENTRE
 STORM DRAINAGE MASTER PLAN MUNICIPAL CLASS ENVIRONMENTAL ASSESSMENT

Figure No.

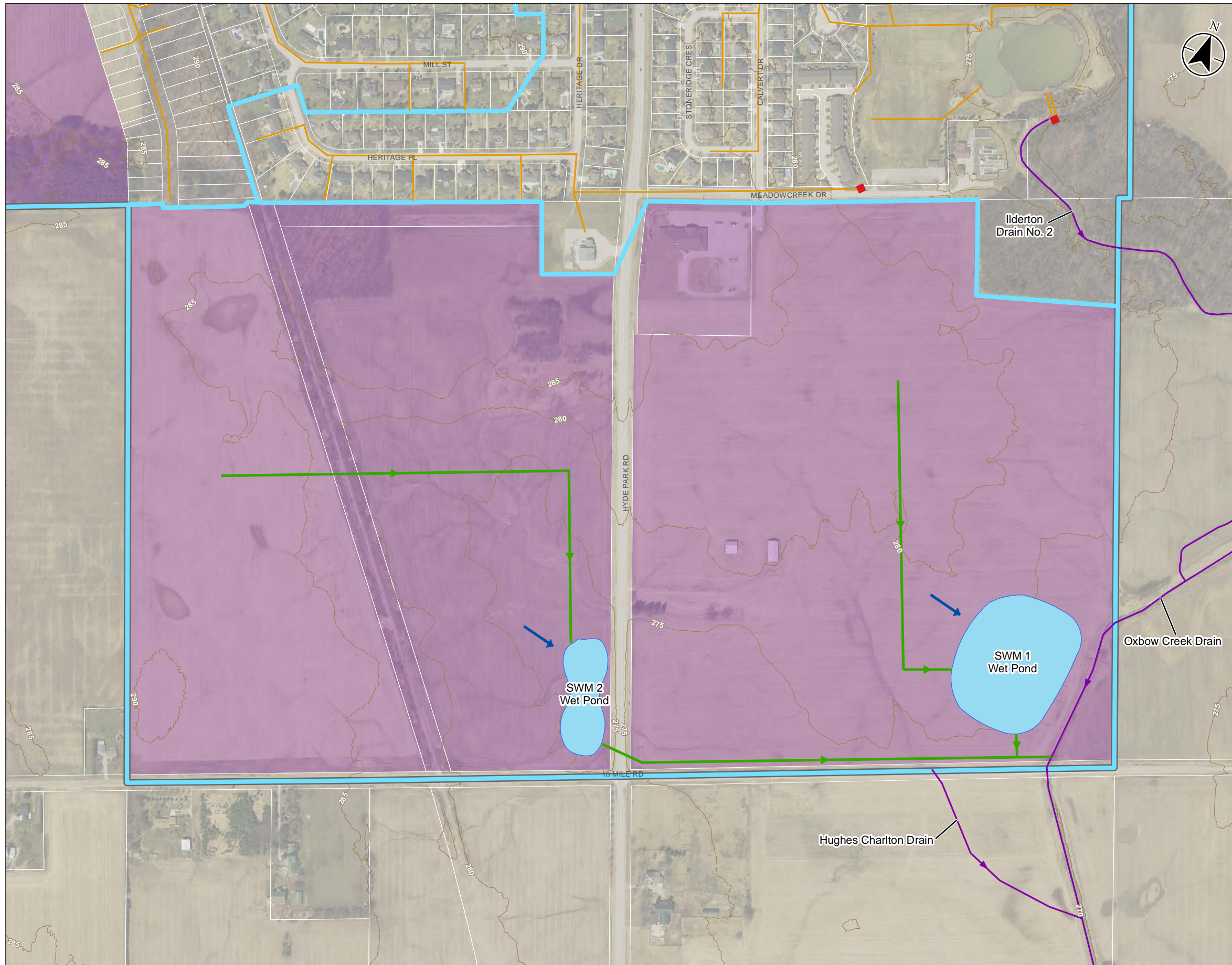
E-3

Title

Ilderton Drain No. 2
 Preferred Alternative
 Drain Improvements

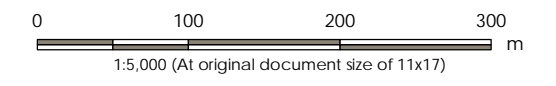
\\CA\217\FPP\501\work_group\0165630134\preliminary\analysis\ga.mxd\Preferred\165630134_OPT_B4.3_IldertonDrain2.mxd Revised: 2020-07-10 By: albrown

\\CA\0217\FPP\01\work_group\0165630134\preliminary\analysis\sga.mxd\Preferred\165630134_OPT_B4.4_IldertonSouthDA.mxd Revised: 2020-03-10 By: albrown

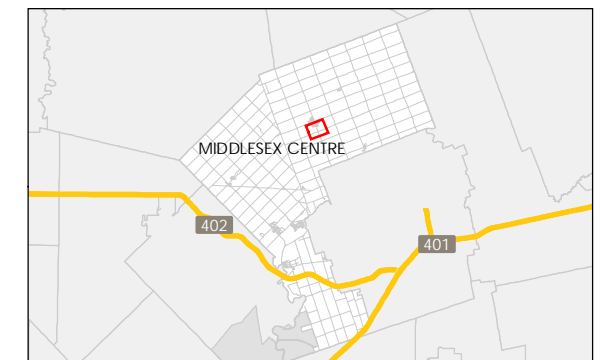


Legend

- Elevation Contour
- Development Area
- Storm Catchment Area
- Settlement Boundary
- Existing Infrastructure:**
- Outlet
- Storm Sewer
- Municipal Drain
- Proposed Infrastructure:**
- Overland Flow Direction
- Storm Sewer
- SWM Facility



- Notes**
1. Coordinate System: NAD 1983 UTM Zone 17N
 2. Parcels © Teranet Enterprises Inc. and its suppliers. All rights reserved. Not a plan of survey.
 3. 2015 orthoimagery © 2018 of the Queen's Printer for Ontario. All rights reserved.



Project Location: Municipality of Middlesex Centre
 165630134 REVA
 Prepared by ASB on 2020-03-10

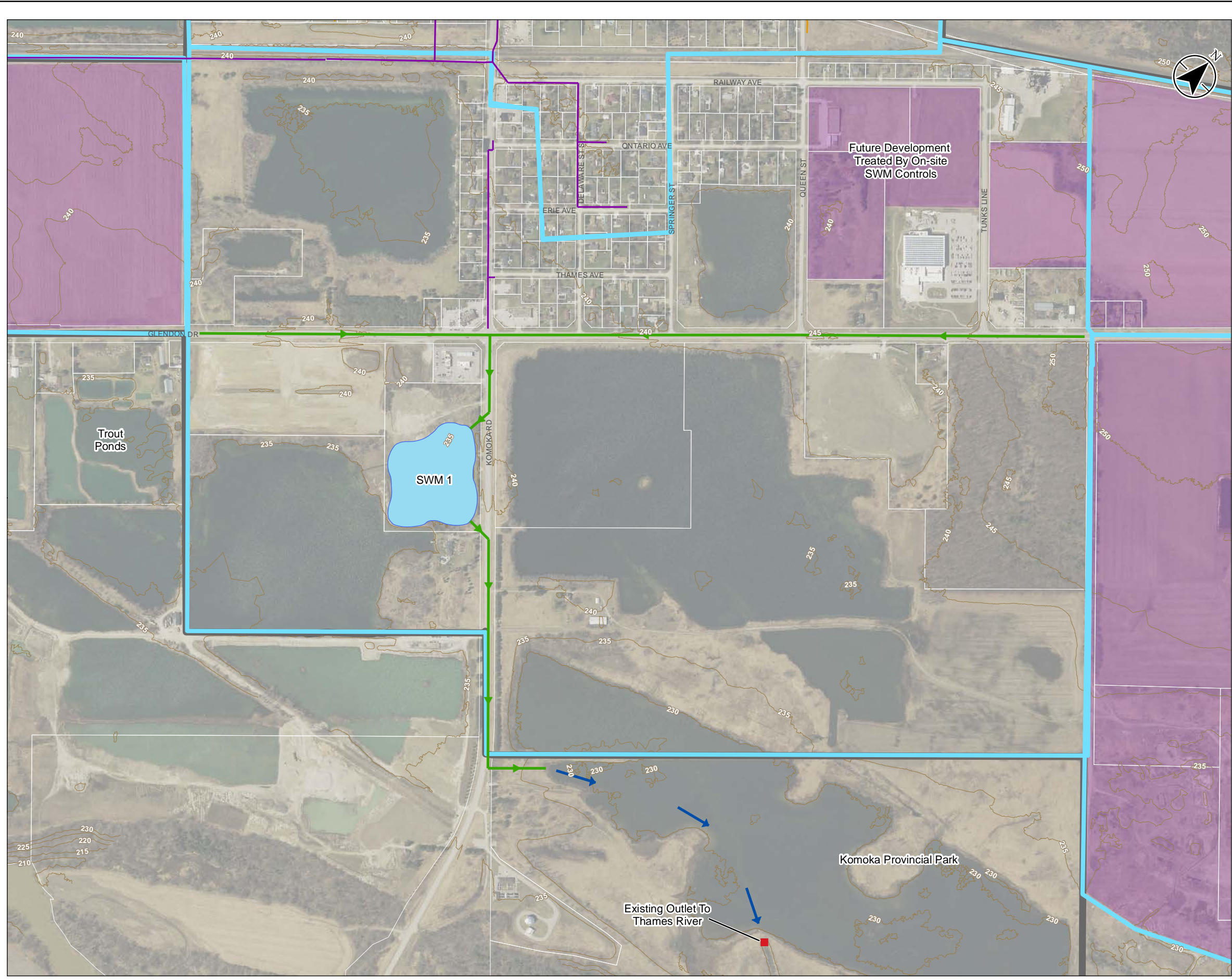
Client/Project:
 MUNICIPALITY OF MIDDLESEX CENTRE
 STORM DRAINAGE MASTER PLAN MUNICIPAL CLASS ENVIRONMENTAL ASSESSMENT

Figure No.

E-4

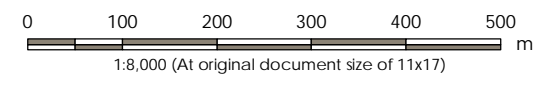
Title
 South Ilderton Development Area
 Preferred Alternative
 Two SWM Facilities

\\CA\0217\FPP\SS01\work_group\0165630134\preliminary\analysis\kga.mxd\Preferred\165630134_OPT1_B4-5_KomokaDrain1.mxd Revised: 2020-03-10 By: albrown

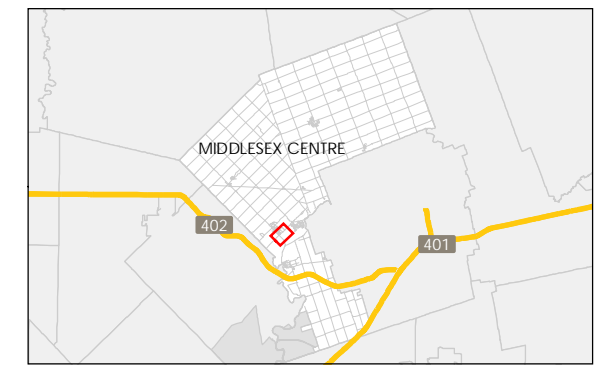


Legend

- Elevation Contour
- Development Area
- Storm Catchment Area
- Settlement Boundary
- Existing Infrastructure:**
- Outlet
- Storm Sewer
- Municipal Drain
- Proposed Infrastructure:**
- Overland Flow Direction
- Storm Sewer
- SWM Facility



- Notes**
1. Coordinate System: NAD 1983 UTM Zone 17N
 2. Parcels © Teranet Enterprises Inc. and its suppliers. All rights reserved. Not a plan of survey.
 3. 2015 orthoimagery © 2018 of the Queen's Printer for Ontario. All rights reserved.

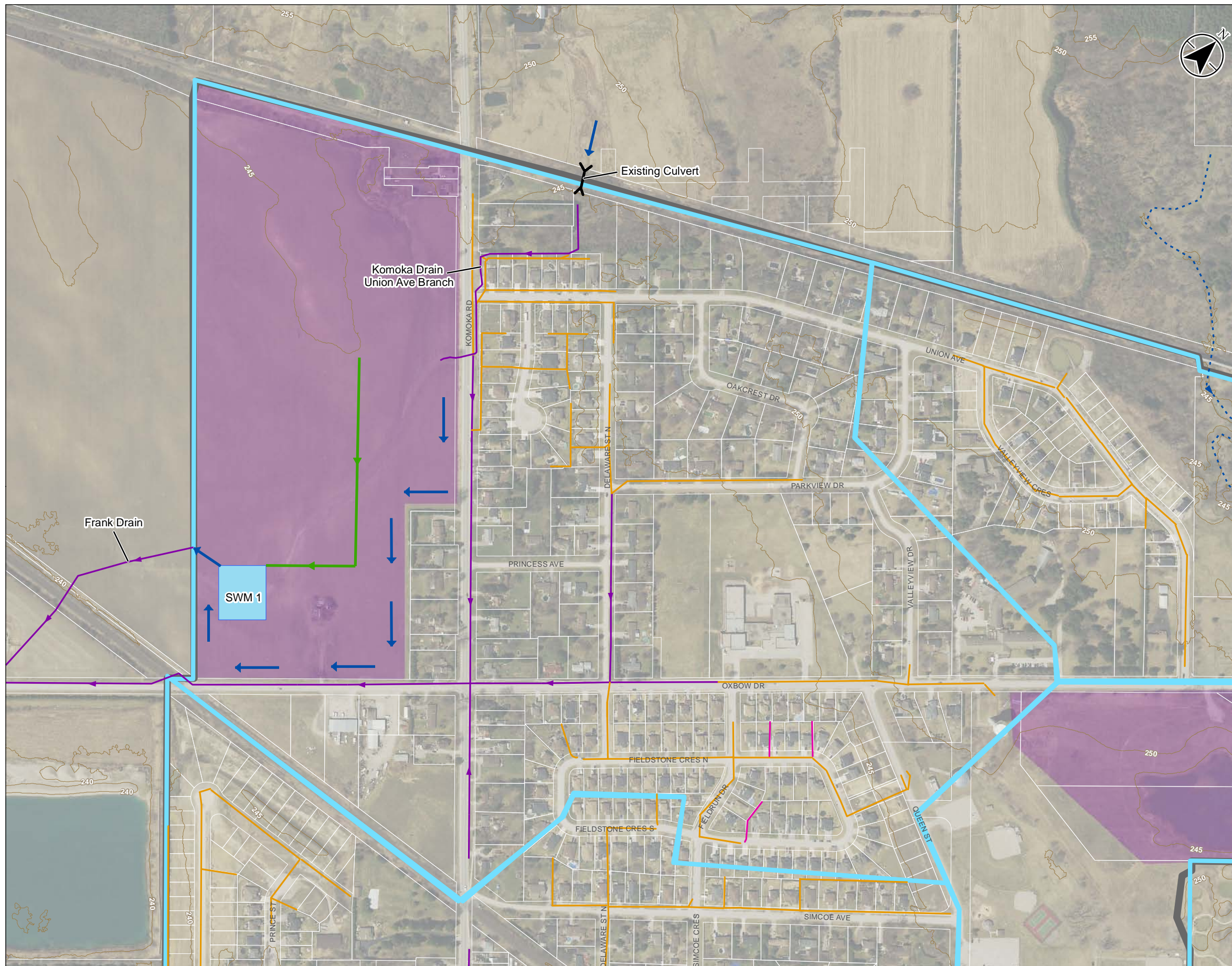


Project Location: Municipality of Middlesex Centre
 165630134 REVA
 Prepared by ASB on 2020-03-10

Client/Project: MUNICIPALITY OF MIDDLESEX CENTRE
 STORM DRAINAGE MASTER PLAN MUNICIPAL CLASS ENVIRONMENTAL ASSESSMENT

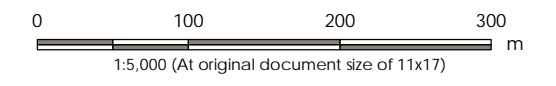
Figure No.: **E-5**
 Title: **Komoka Drain No. 1 Preferred Alternative Combined Alternatives 3 and 5**

\\CA\0217\PP\SS01\work_group\01656\active\165630134\preliminary\analysis\ga.mxd Preferred\165630134_OPT_B4-6_KomokaDrain3.mxd Revised: 2020-03-10 By: albrown

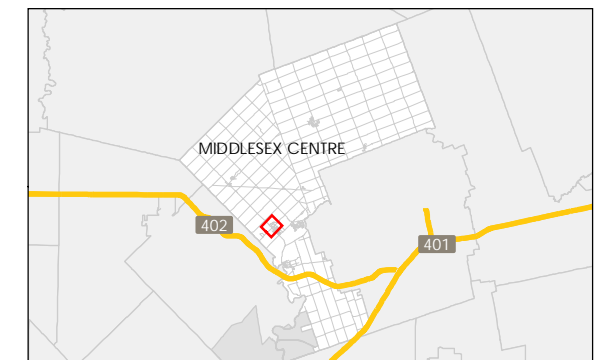


Legend

- Elevation Contour
- Development Area
- Storm Catchment Area
- Settlement Boundary
- Existing Infrastructure:**
 - Storm Sewer
 - Perforated Subdrain
 - Municipal Drain
- Proposed Infrastructure:**
 - Overland Flow Direction
 - Storm Sewer
 - SWM Facility



- Notes**
1. Coordinate System: NAD 1983 UTM Zone 17N
 2. Parcels © Teranet Enterprises Inc. and its suppliers. All rights reserved. Not a plan of survey
 3. 2015 orthoimagery © 2018 of the Queen's Printer for Ontario. All rights reserved.



Project Location: Municipality of Middlesex Centre
 165630134 REVA
 Prepared by ASB on 2020-03-10

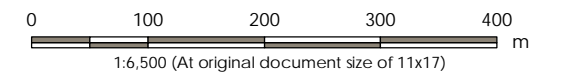
Client/Project:
 MUNICIPALITY OF MIDDLESEX CENTRE
 STORM DRAINAGE MASTER PLAN MUNICIPAL CLASS ENVIRONMENTAL ASSESSMENT

Figure No.
E-6

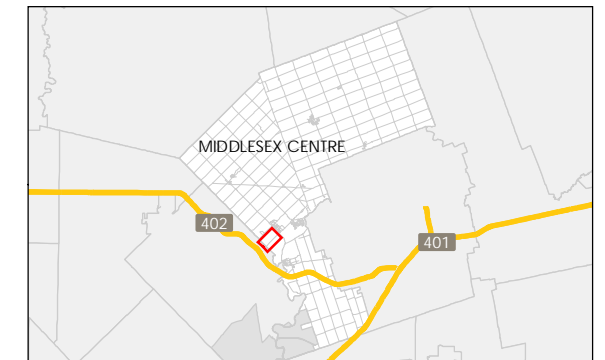
Title
 Komoka Drain No. 3
 Preferred Alternative
 Service Only Proposed Development

Legend

- Elevation Contour
- Development Area
- Storm Catchment Area
- Settlement Boundary
- Existing Infrastructure:**
- Outlet
- Municipal Drain
- Creek
- Proposed Infrastructure:**
- Overland Flow Direction
- Storm Sewer
- Glendon Drive Ditch
- SWM Facility



- Notes
1. Coordinate System: NAD 1983 UTM Zone 17N
 2. Parcels © Teranet Enterprises Inc. and its suppliers. All rights reserved. Not a plan of survey.
 3. 2015 orthoimagery © 2018 of the Queen's Printer for Ontario. All rights reserved.



Project Location: Municipality of Middlesex Centre
 165630134 REVA
 Prepared by ASB on 2020-03-10

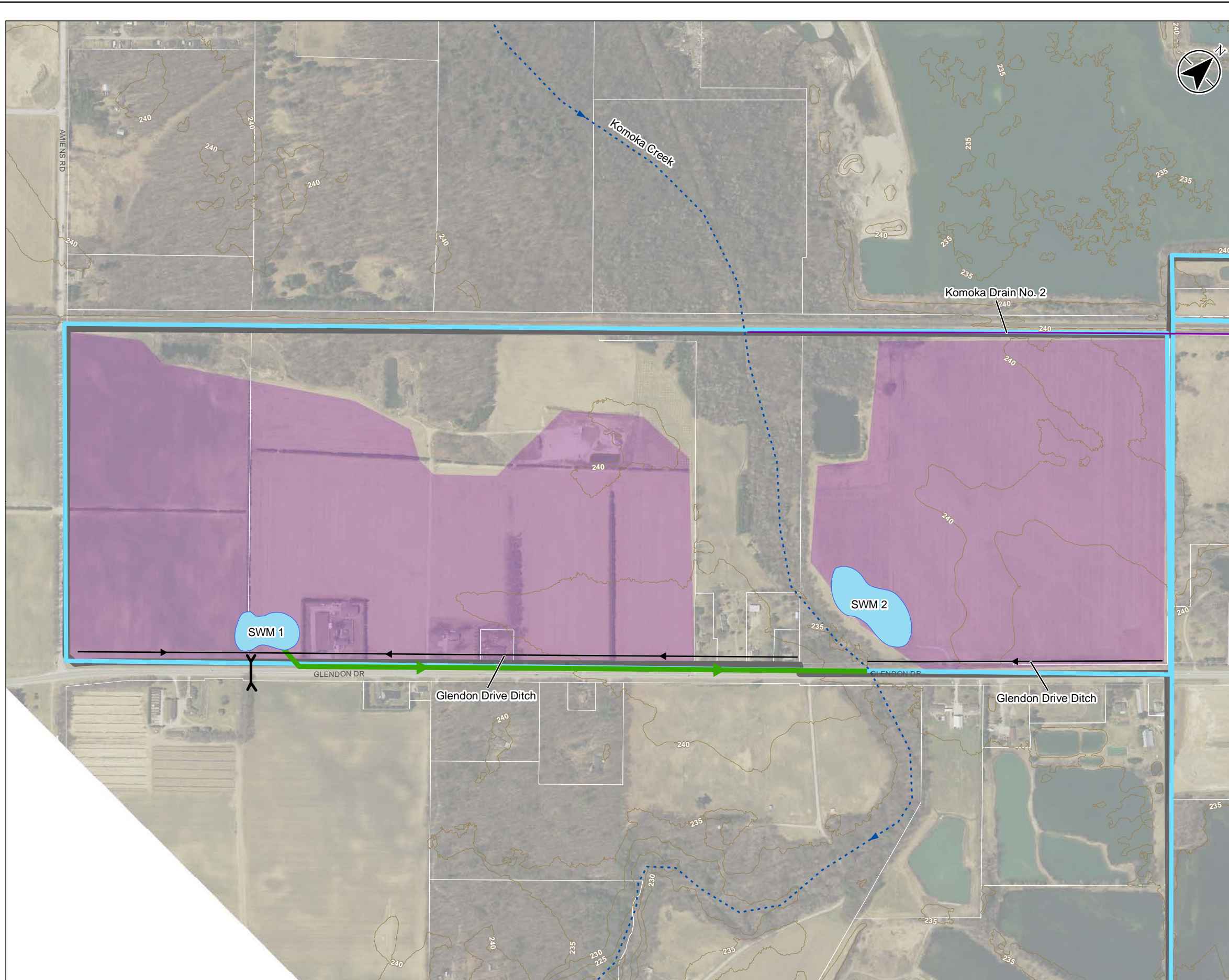
Client/Project: MUNICIPALITY OF MIDDLESEX CENTRE
 STORM DRAINAGE MASTER PLAN MUNICIPAL CLASS ENVIRONMENTAL ASSESSMENT

Figure No.

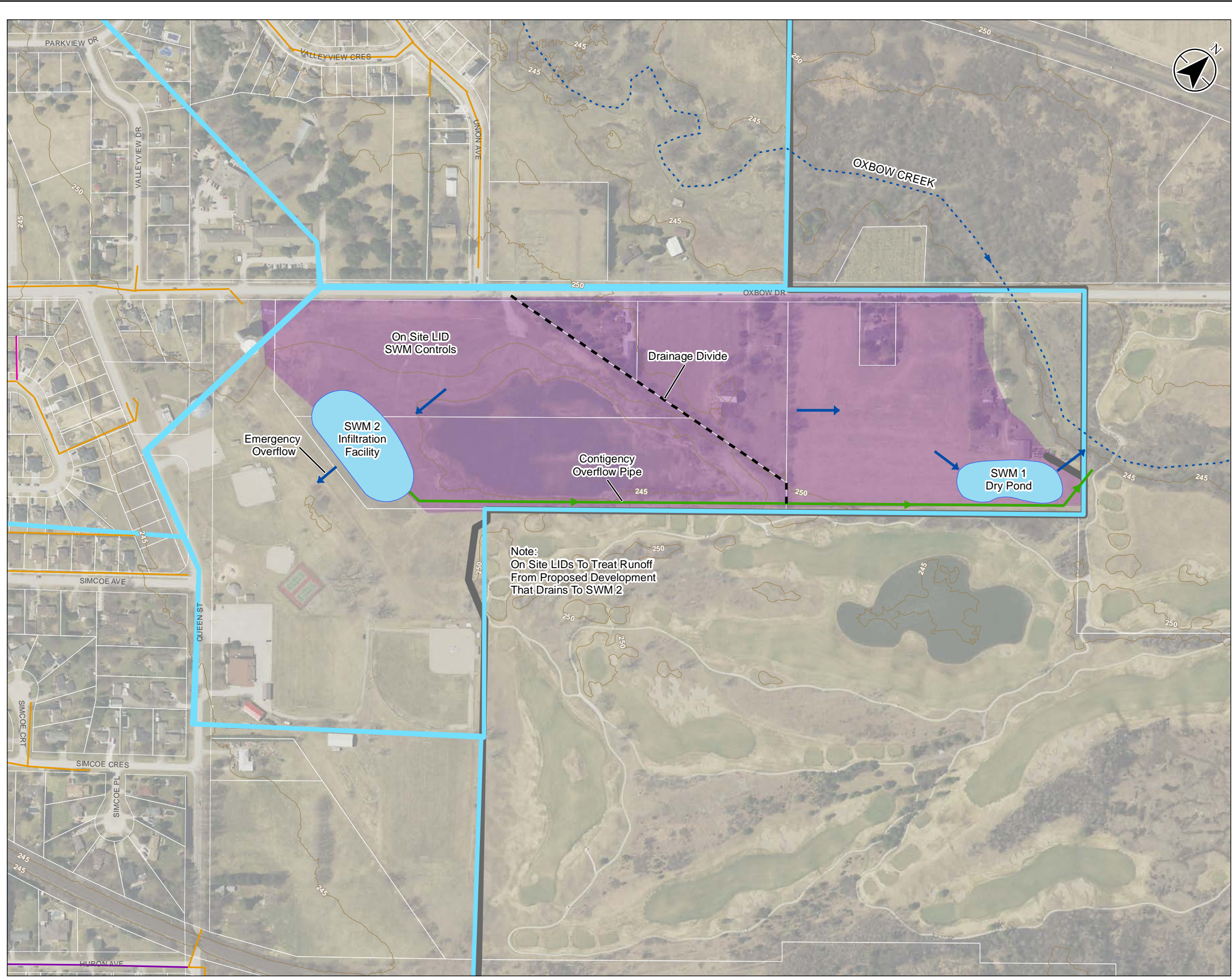
E-7

Title

West Komoka Development Area
 Preferred Alternative
 Service Only Proposed Development



\\CA\217\FPP\SS01\work_group\0165630134\preliminary\analysis\gsa.mxd Preferred\165630134_OPT_B4-8_KomokaNEDA.mxd Revised: 2020-07-10 By: albrown

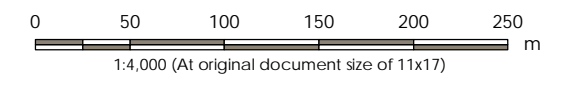


Note:
 On Site LIDs To Treat Runoff
 From Proposed Development
 That Drains To SWM 2

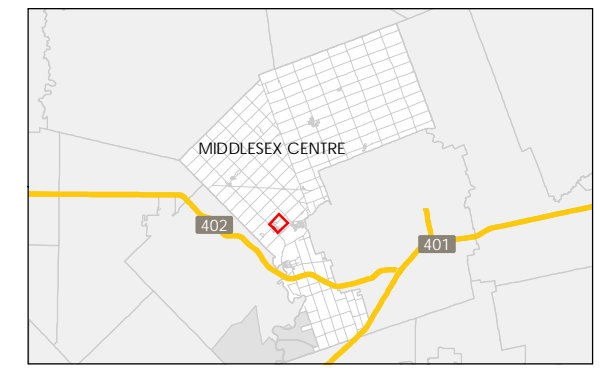


Legend

- Elevation Contour
- Development Area
- Storm Catchment Area
- Settlement Boundary
- Existing Infrastructure:**
- Outlet
- Storm Sewer
- Creek
- Proposed Infrastructure:**
- Overland Flow Direction
- Storm Sewer
- Drainage Divide
- SWM Facility



- Notes**
1. Coordinate System: NAD 1983 UTM Zone 17N
 2. Parcels © Teranet Enterprises Inc. and its suppliers. All rights reserved. Not a plan of survey.
 3. 2015 orthoimagery © 2018 of the Queen's Printer for Ontario. All rights reserved.



Project Location: Municipality of Middlesex Centre
 165630134 REVA
 Prepared by ASB on 2020-07-10

Client/Project:
 MUNICIPALITY OF MIDDLESEX CENTRE
 STORM DRAINAGE MASTER PLAN MUNICIPAL CLASS
 ENVIRONMENTAL ASSESSMENT

Figure No.

E-8

Title

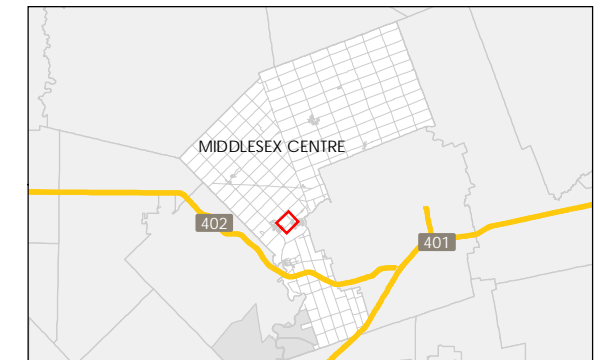
North East Komoka Development Area
 Preferred Alternative
 Two SWM Facilities

Legend

- Elevation Contour
- Development Area
- Storm Catchment Area
- Settlement Boundary
- Existing Infrastructure:**
- Outlet
- Storm Sewer
- Municipal Drain
- Proposed Infrastructure:**
- Overland Flow Direction
- Storm Sewer
- Existing Swale
- Drainage Divide
- SWM Facility



- Notes
1. Coordinate System: NAD 1983 UTM Zone 17N
 2. Parcels © Teranet Enterprises Inc. and its suppliers. All rights reserved. Not a plan of survey.
 3. 2015 orthoimagery © 2018 of the Queen's Printer for Ontario. All rights reserved.



Project Location: Municipality of Middlesex Centre
 165630134 REVA
 Prepared by ASB on 2020-03-10

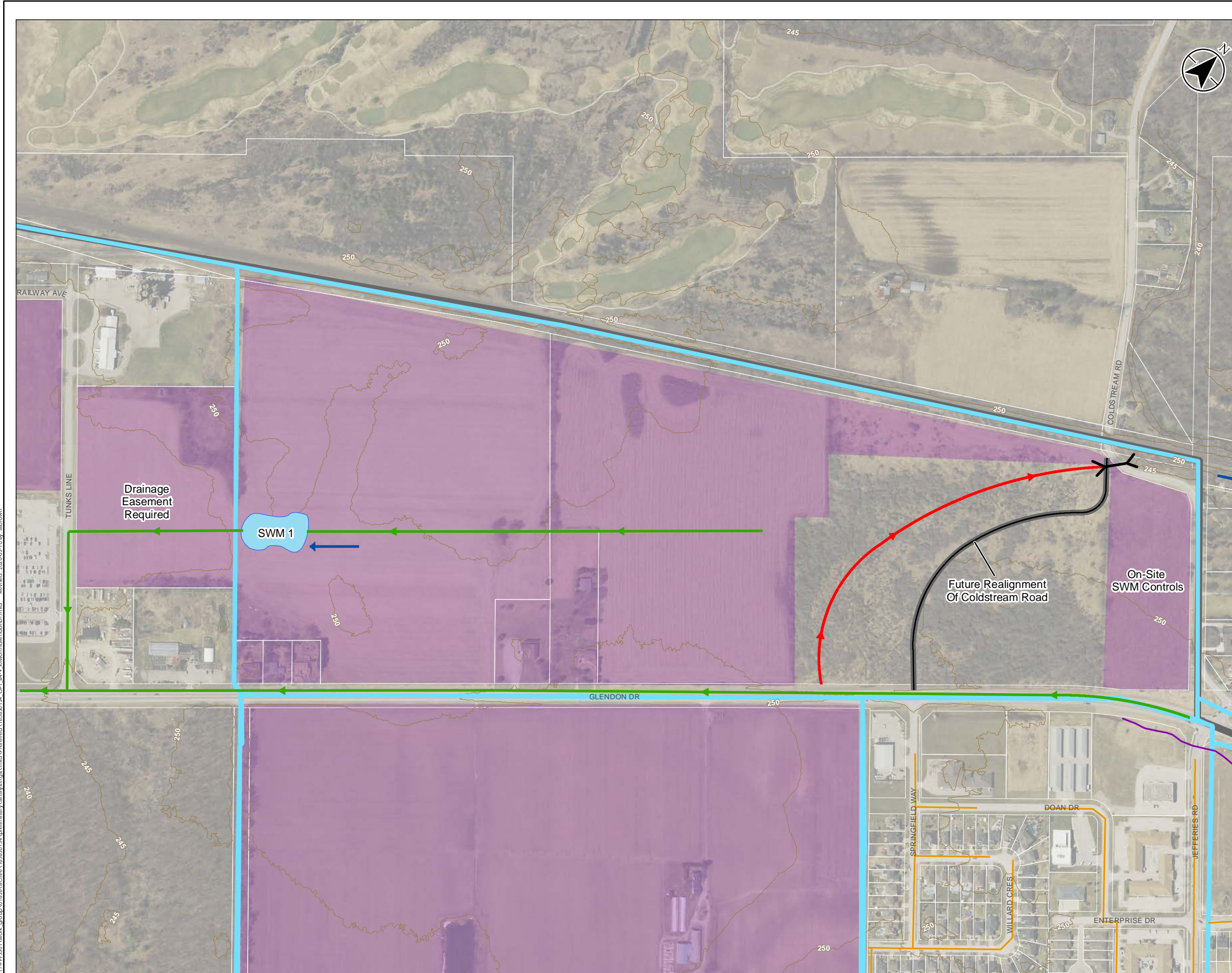
Client/Project:
 MUNICIPALITY OF MIDDLESEX CENTRE
 STORM DRAINAGE MASTER PLAN MUNICIPAL CLASS
 ENVIRONMENTAL ASSESSMENT

Figure No.

E-9

Title

Kilworth Glendon Drive Area
 Preferred Alternative
 Discharge to Glendon Drive Trunk Sewer



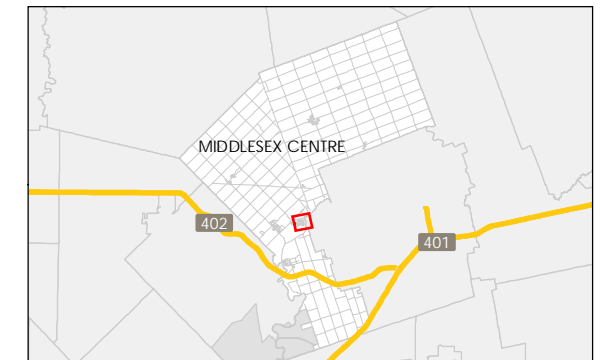
\\CA\0217\FPP\01\work_group\0165630134\preliminary\analysis\sga.mxd Preferred\165630134_OPT_B4-9_KilworthGlendonDr.mxd
 Revised: 2020-03-10 By: albrown

Legend

- Elevation Contour
- Storm Catchment Area
- Settlement Boundary
- Existing Infrastructure:**
 - Outlet
 - Storm Sewer
- Proposed Infrastructure:**
 - Overland Flow Direction
 - Ditch Improvements
 - Enhanced Grassed Swale



- Notes
1. Coordinate System: NAD 1983 UTM Zone 17N
 2. Parcels © Teranet Enterprises Inc. and its suppliers. All rights reserved. Not a plan of survey
 3. 2015 orthomagey © 2018 of the Queen's Printer for Ontario. All rights reserved.

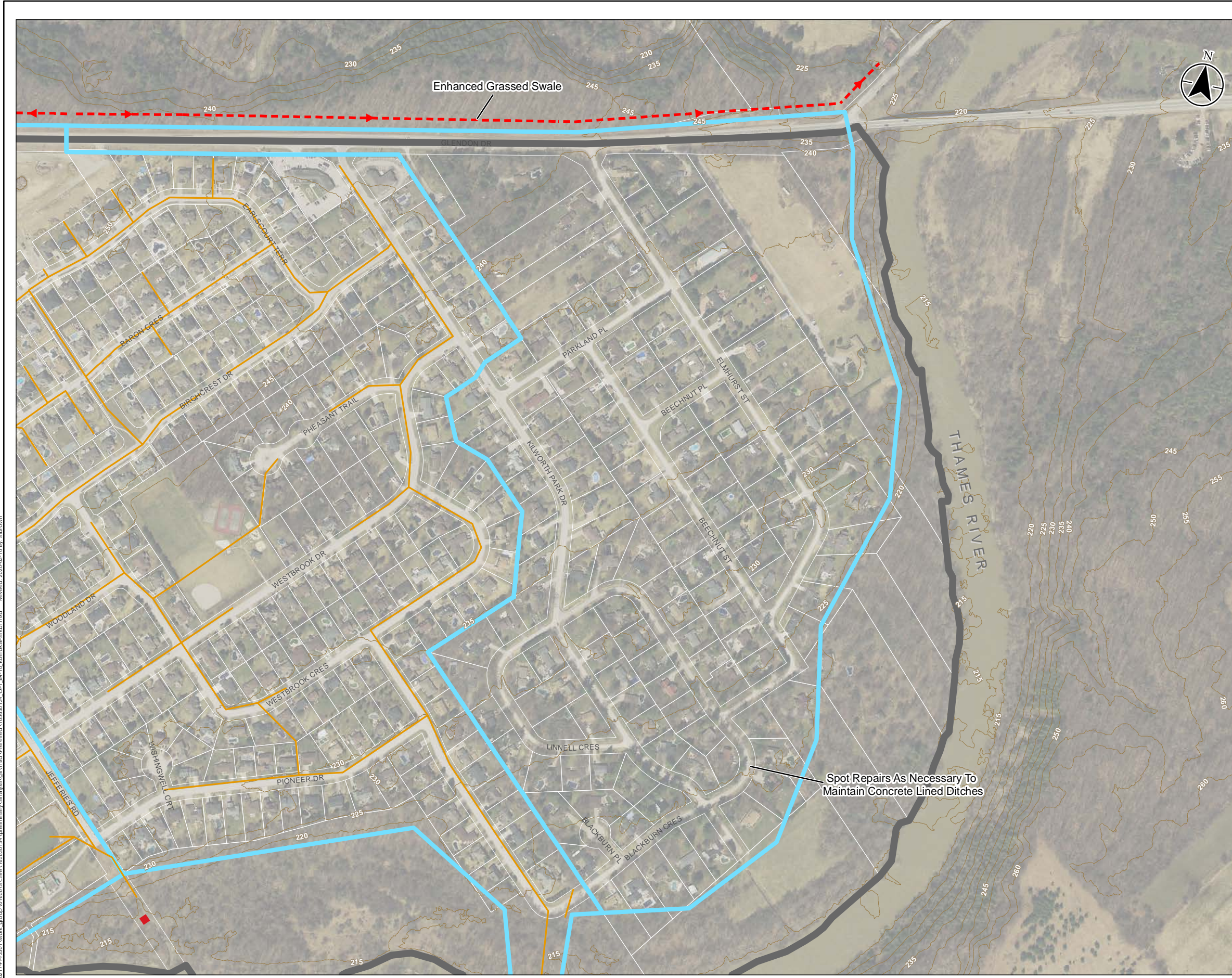


Project Location: Municipality of Middlesex Centre
 165630134 REVA
 Prepared by ASB on 2020-03-10

Client/Project: MUNICIPALITY OF MIDDLESEX CENTRE
 STORM DRAINAGE MASTER PLAN MUNICIPAL CLASS ENVIRONMENTAL ASSESSMENT

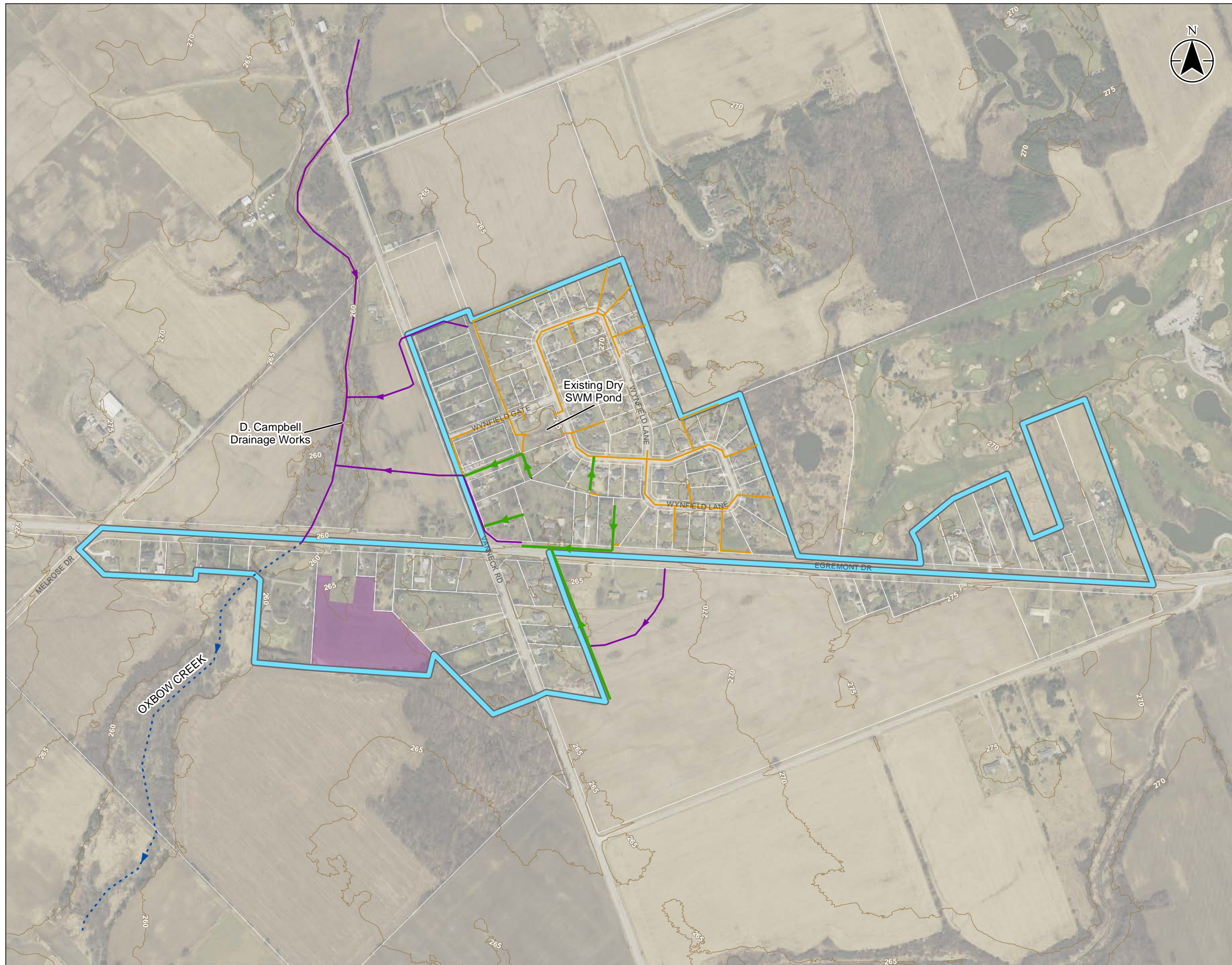
Figure No. **E-10**

Title: Kilworth East
 Preferred Alternatives
 SWM Strategy per Glendon Drive EA



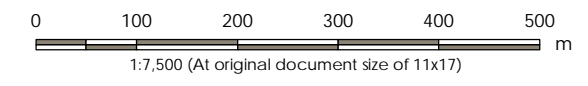
\\CA\0217\FPP\01\work_group\0165630134\preliminary\analysis\mxd\Preferred\165630134_OPT1_B4-10_KilworthEast.mxd
 Revised: 2020-03-10 By: albrown

\\CA\0217\FPPSS01\work_group\0165630134\preliminary\analysis\sga.mxd Preferred\165630134_DPT_B4-11_Melrose.mxd Revised: 2020-03-10 By: albrown

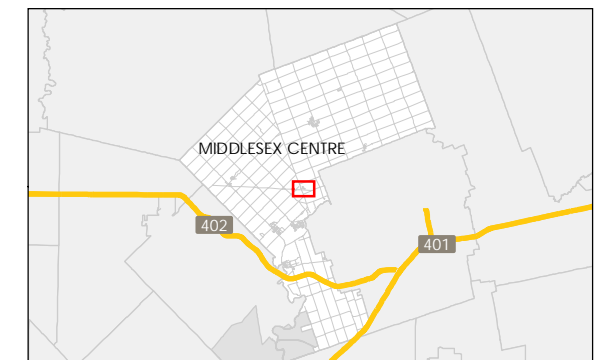


Legend

- Elevation Contour
- Development Area
- Storm Catchment Area
- Settlement Boundary
- Existing Infrastructure:**
 - Outlet
 - Storm Sewer
 - Municipal Drain
 - Creek
- Proposed Infrastructure:**
 - Storm Sewer



- Notes
1. Coordinate System: NAD 1983 UTM Zone 17N
 2. Parcels © Teranet Enterprises Inc. and its suppliers. All rights reserved. Not a plan of survey.
 3. 2015 orthoimagery © 2018 of the Queen's Printer for Ontario. All rights reserved.



Project Location: Municipality of Middlesex Centre
165630134 REVA
Prepared by ASB on 2020-03-10

Client/Project: MUNICIPALITY OF MIDDLESEX CENTRE
STORM DRAINAGE MASTER PLAN MUNICIPAL CLASS ENVIRONMENTAL ASSESSMENT

Figure No. E-11

Title: Melrose Preferred Alternative Relocate Drainage System