

Copyright Reserved

The Contractor shall verify and be responsible for all dimensions. DO NOT scale the drawing - any errors or omissions shall be reported to Stantec without delay.
The Copyrights to all designs and drawings are the property of Stantec. Reproduction or use for any purpose other than that authorized by Stantec is forbidden.

Consultants

Legend

	PROPERTY LINE
	REMOVE EXISTING TURF, TOPSOIL AND SUBGRADE
	REMOVE EXISTING PLAYGROUND SURFACING
	REMOVE EXISTING UNIT PAVING FOR REUSE
	REMOVE EXISTING PLAY EQUIPMENT
	EXISTING CHAINLINK FENCE
	TREE PROTECTION FENCING
	EXISTING WOODLOT BOUNDARY
	EXISTING DECIDUOUS TREE TO REMAIN
	EXISTING DECIDUOUS TREE TO BE REMOVED
	DECIDUOUS TREE
	ASPHALT PAVING
	CONCRETE PAVING
	UNIT PAVING
	APPROXIMATE LIMIT OF RESTORATION WITH 100mm TOPSOIL AND SEED
	APPROXIMATE LIMIT OF RESTORATION WITH 25mm TOPSOIL AND SEED
	DRAINAGE PIPE
	PICNIC TABLE
	EXISTING BENCH
	BENCH
	EXISTING TRASH RECEPTACLE
	TRASH RECEPTACLE
	EXISTING STONE BOULDER
	EXISTING LIGHT POLE

Notes

- ALL DRAWINGS SHOULD BE REVIEWED WITH REFERENCE TO COMPLETE CONTRACT DOCUMENTS.
- REFER TO SHEET L-2 AND L-3 FOR DETAILS AND NOTES.

1. PER CLIENT COMMENTS	SU	HE	22.07.07	
Revision	By	Appd.	YY.MM.DD	
2. ISSUED FOR TENDER	SU	HE	22.07.07	
1. ISSUED FOR 75% SUBMISSION	SU	HE	22.03.29	
Issued	By	Appd.	YY.MM.DD	
File Name: 161414223.dwg	SU	HE	SU 22.02.28	
	Dwn.	Chkd.	Disgn.	YY.MM.DD

Permit-Seal



Client/Project

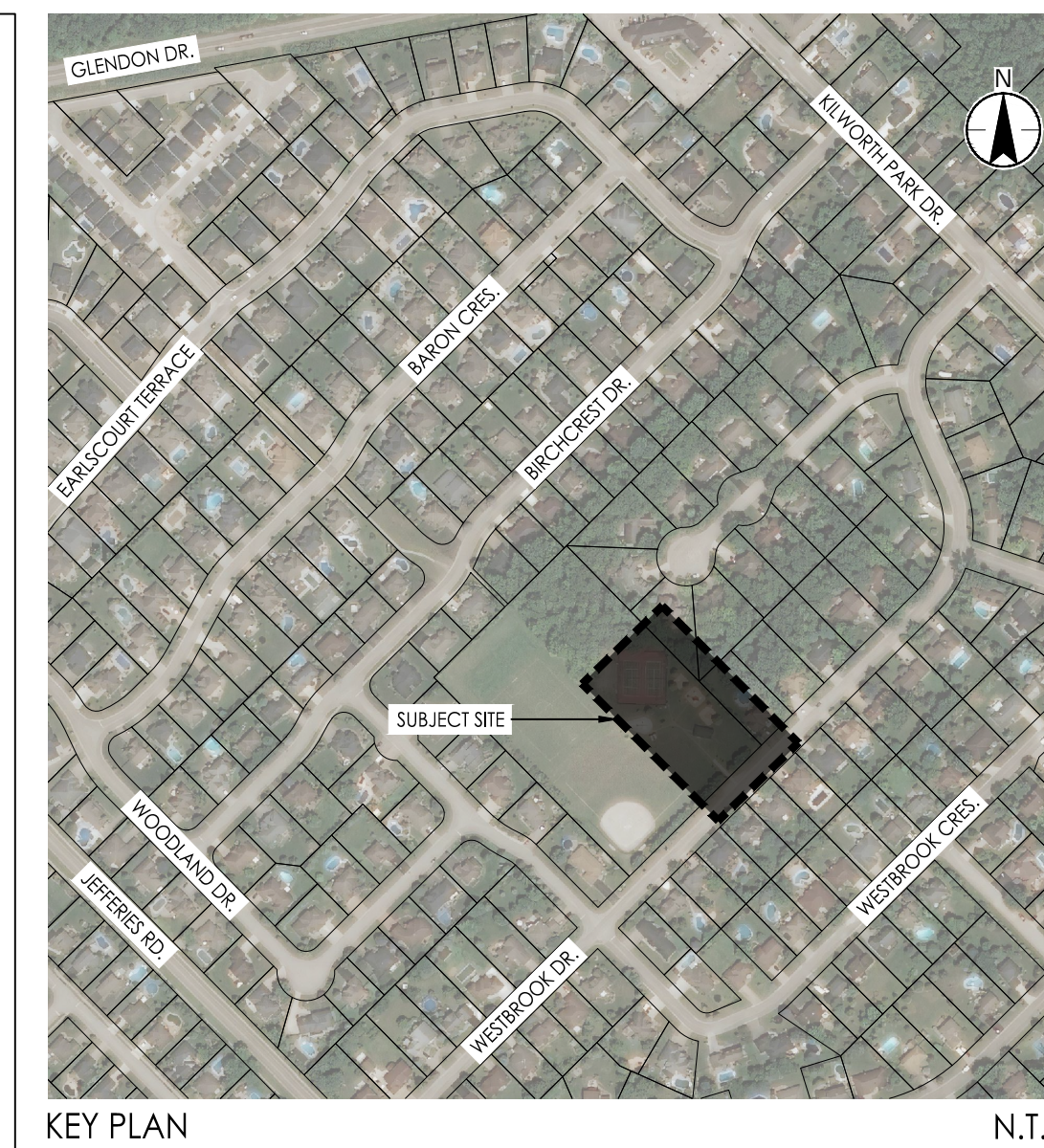
MUNICIPALITY OF MIDDLESEX CENTRE
WESTBROOK PARK IMPROVEMENTS

Kilworth, ON Canada

Title

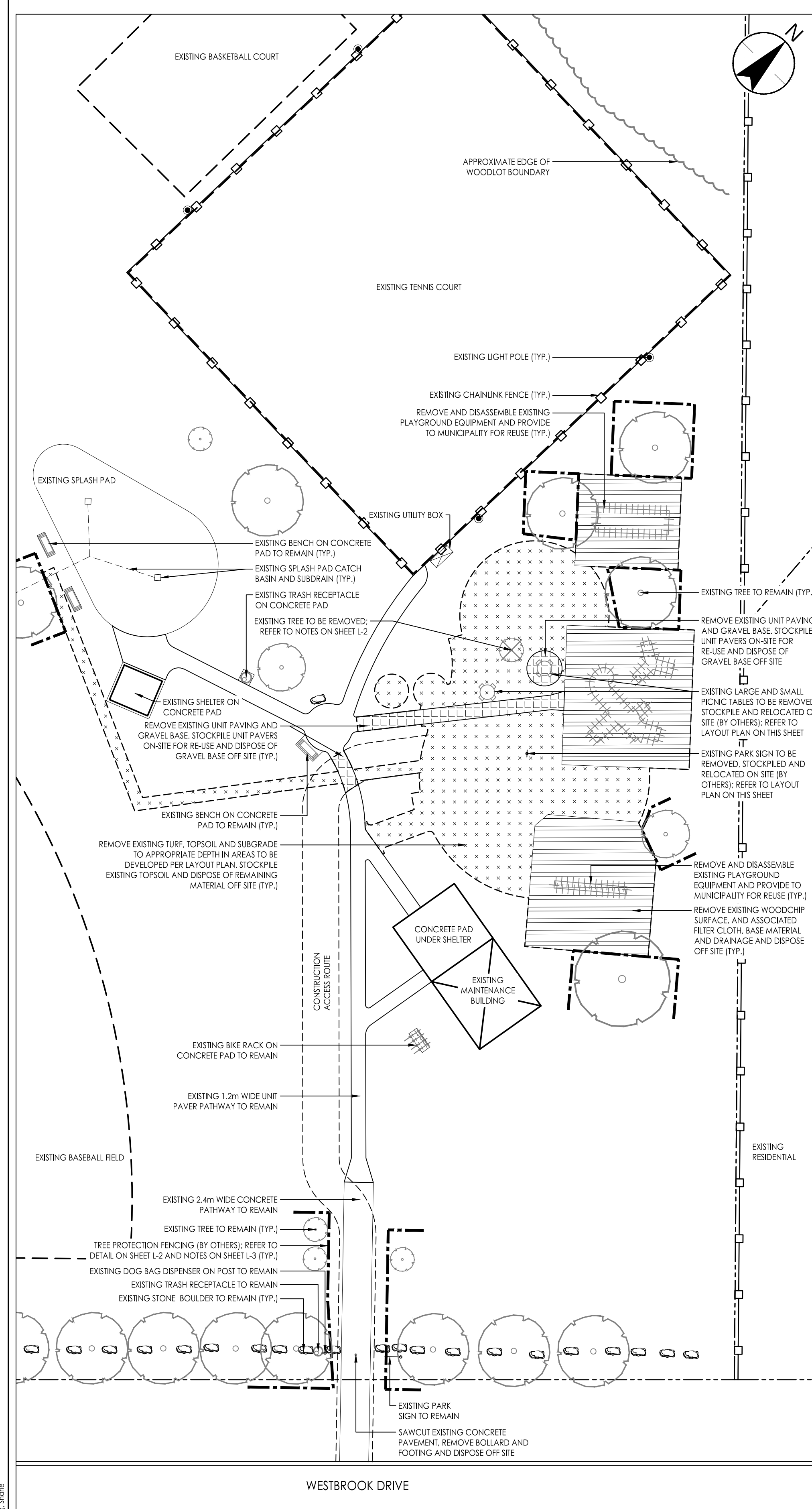
REMOVALS AND LAYOUT PLAN

Project No. 161414223	Scale HORIZ - 1 : 250 2.5 0 5m
Drawing No. L-1	Sheet 1 of 3
	Revision 1

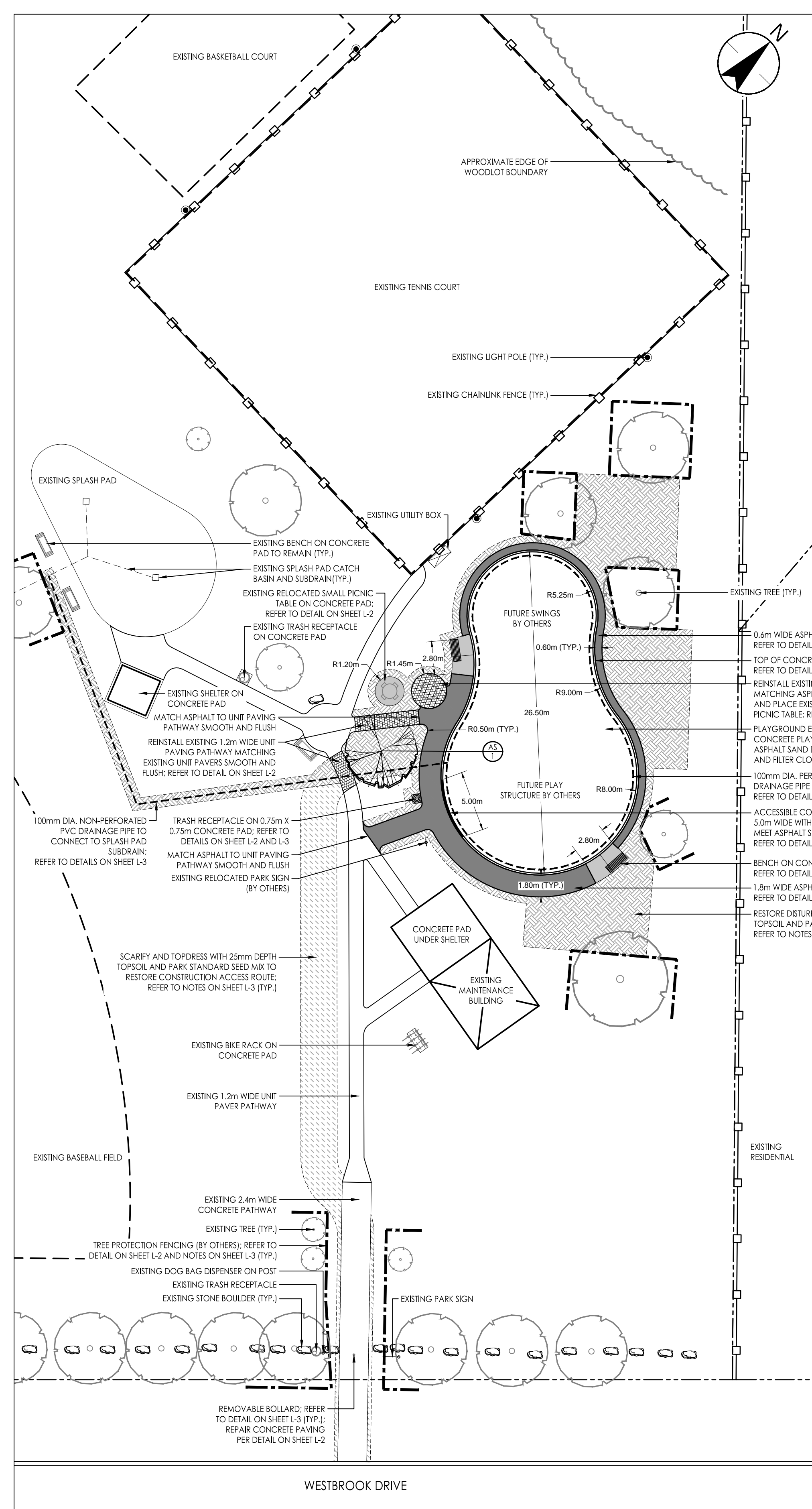


KEY PLAN

N.T.S.



REMOVALS PLAN



LAYOUT PLAN

Plant List

Key	Qty	Botanical Name	Common Name	Size & Condition
Deciduous Trees				
AS	1	<i>Acer saccharum</i>	Sugar Maple	50mm Caliper, W.B. or B&B

- NOTES:
- ELEVATION OF PLAY EQUIPMENT AREA TO BE DETERMINED BY CONTRACTOR AND APPROVED BY CONTRACT ADMINISTRATOR AND MUNICIPALITY TO FACILITATE POSITIVE DRAINAGE PRIOR TO CONSTRUCTION.
 - ALL AREAS DISTURBED BY CONSTRUCTION TO BE RESTORED WITH TOPSOIL AND SEED OR AS OTHERWISE NOTED. REGRADE AREAS REQUIRING RESTORATION PRIOR TO SEEDING AS FOLLOWS:
- PATHWAY GRADES NOT TO EXCEED 5%
- GRASSED AREAS TO BE NO LESS THAN 1% AND NOT TO EXCEED 20%
- CONTRACTOR TO MAINTAIN EXISTING DRAINAGE PATTERNS AND ENSURE STORMWATER IS NOT DIRECTED ONTO PRIVATE PROPERTY.

\\\2025\7\22\161414223\design\landscape\landscape\sheet\161414223_L-1.dwg
 2025-07-16 10:22:12 AM
 161414223.dwg

Copyright Reserved

The Contractor shall verify and be responsible for all dimensions. DO NOT scale the drawing - any errors or omissions shall be reported to Stantec without delay.
The Copyrights to all designs and drawings are the property of Stantec. Reproduction or use for any purpose other than that authorized by Stantec is forbidden.

Consultants

Legend

Notes

- ALL DRAWINGS SHOULD BE REVIEWED WITH REFERENCE TO COMPLETE CONTRACT DOCUMENTS.

Revision	By	HE	Appd.	YY.MM.DD
1. PER CLIENT COMMENTS	SU	HE		22.07.07
2. ISSUED FOR TENDER	SU	HE		22.07.07
1. ISSUED FOR 75% SUBMISSION	SU	HE		22.03.29
Issued	By	Appd.		YY.MM.DD
File Name: 161414223.rvt	SU	HE	SU	22.02.28
	Dwn.	Chkd.	Desgn.	YY.MM.DD

Permit-Seal



Client/Project
MUNICIPALITY OF MIDDLESEX CENTRE

WESTBROOK PARK IMPROVEMENTS

Kilworth, ON Canada

Title

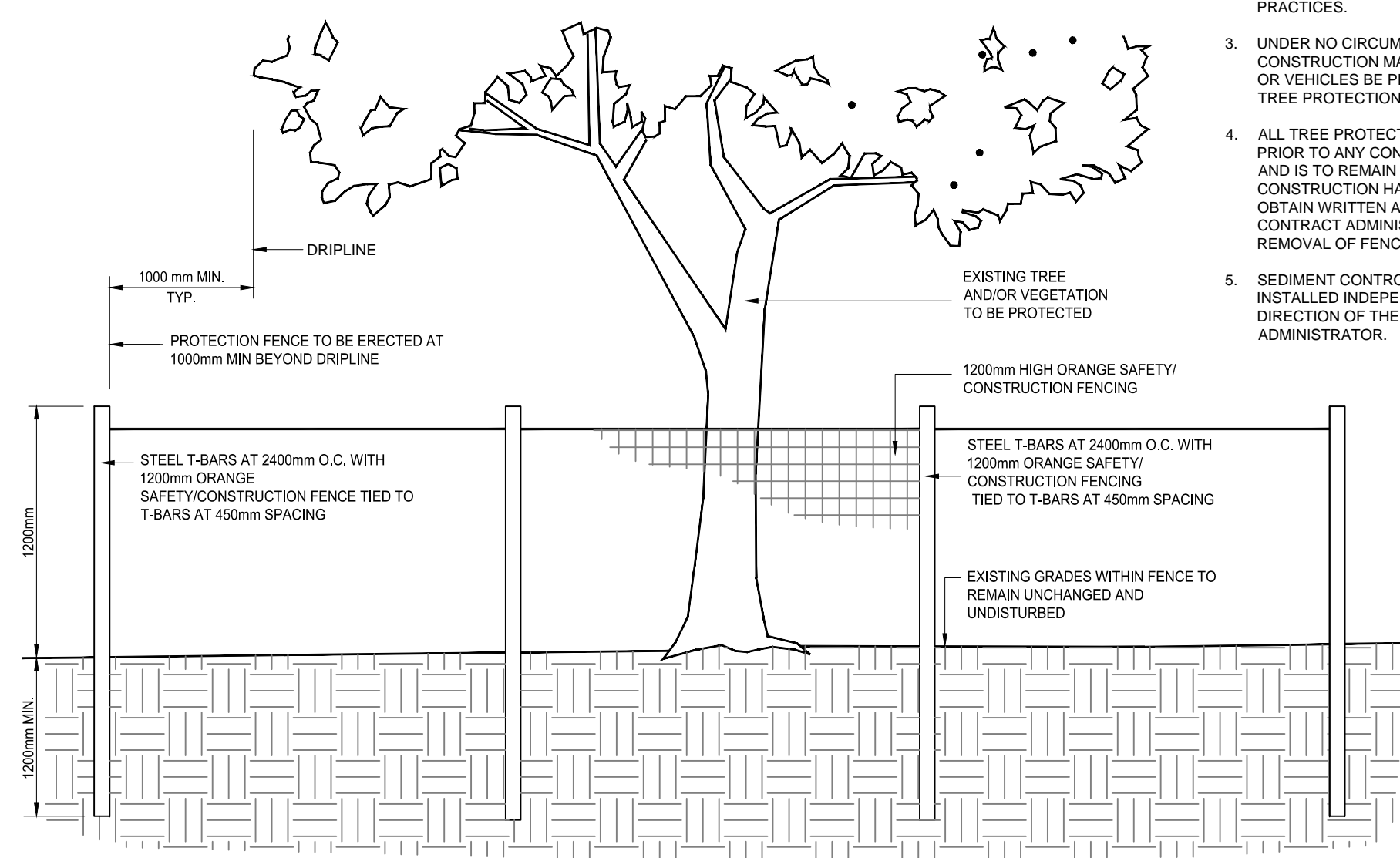
LANDSCAPE DETAILS

Project No. 161414223 Scale SCALE AS SHOWN

Drawing No. L-2 Sheet 2 of 3 Revision 1

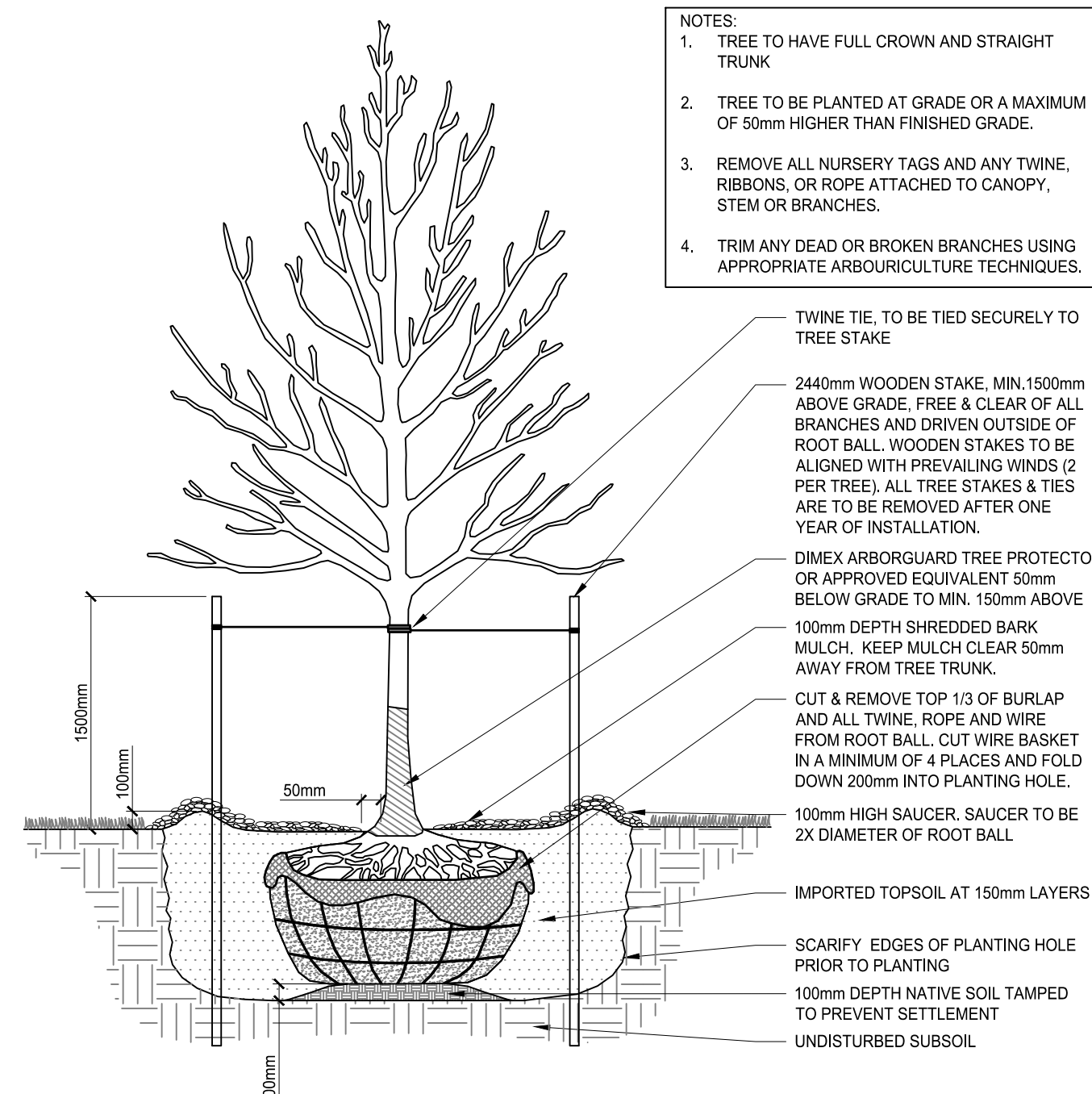
NOTES:

- ATTACHMENT OF FENCE TO TREES WILL NOT BE PERMITTED.
- ANY EXPOSED ROOTS ARE TO BE HAND PRUNED USING PROPER ARBORICULTURAL PRACTICES.
- UNDER NO CIRCUMSTANCES SHALL ANY CONSTRUCTION MATERIALS, EQUIPMENT OR VEHICLES BE PLACED WITHIN THE TREE PROTECTION ZONE.
- ALL TREE PROTECTION TO BE ERECTED PRIOR TO ANY CONSTRUCTION ACTIVITY AND IS TO REMAIN IN PLACE UNTIL ALL CONSTRUCTION HAS BEEN COMPLETED. OBTAIN WRITTEN APPROVAL FROM CONTRACT ADMINISTRATOR PRIOR TO REMOVAL OF FENCING.
- SEDIMENT CONTROL FENCING WILL BE INSTALLED INDEPENDENTLY UNDER DIRECTION OF THE CONTRACT ADMINISTRATOR.

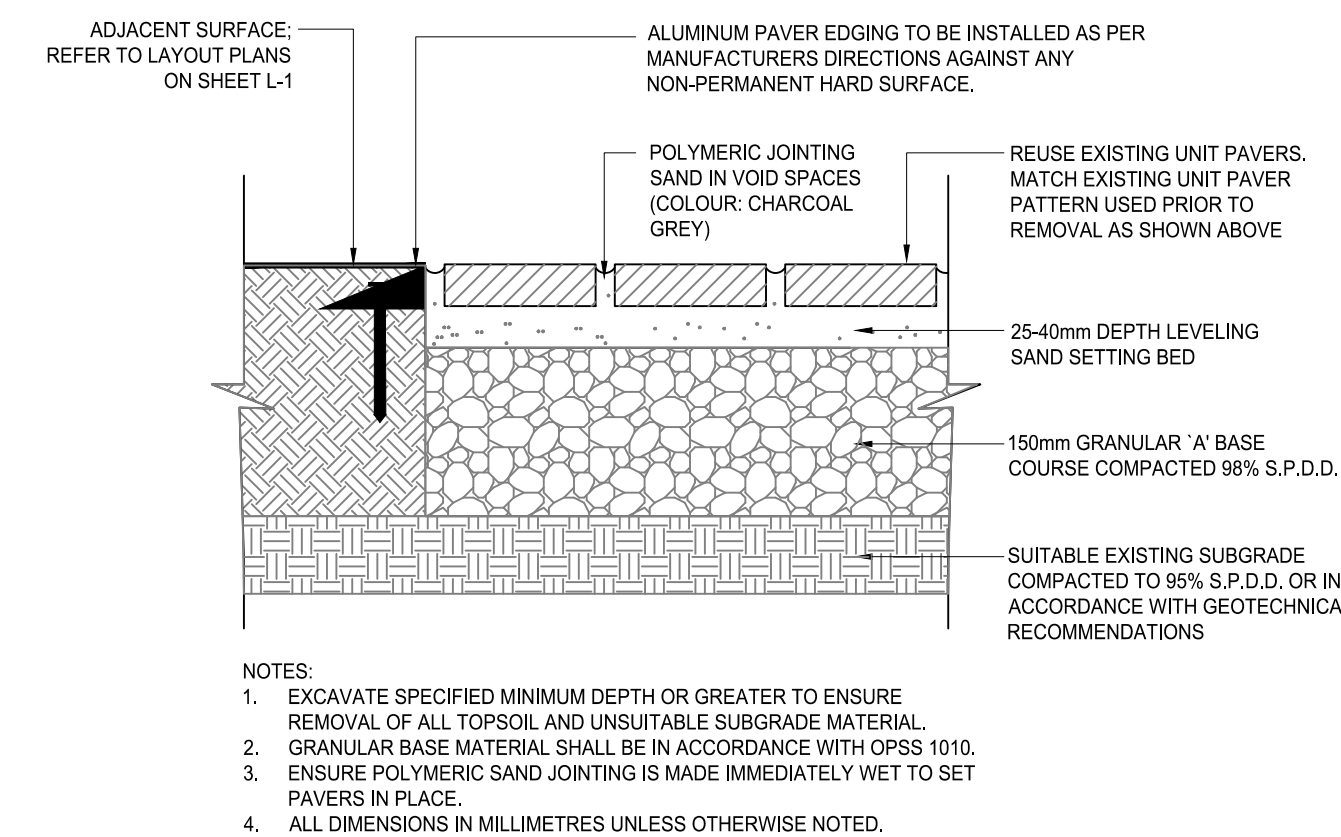
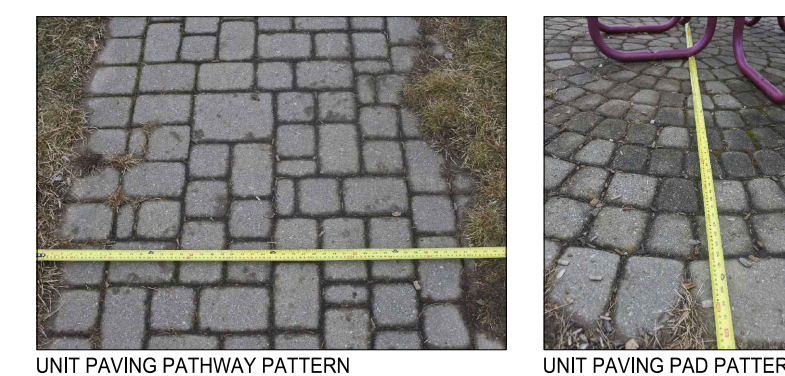


TREE PROTECTION FENCING DETAIL
N.T.S.

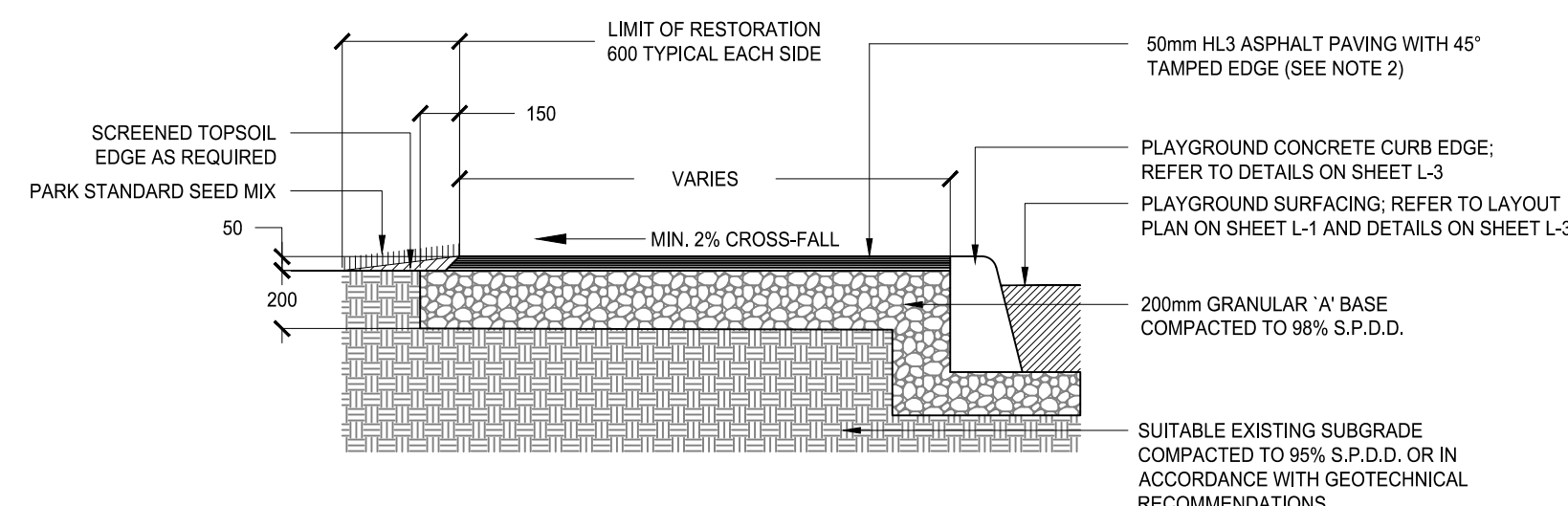
- TREE TO HAVE FULL CROWN AND STRAIGHT TRUNK
- TREE TO BE PLANTED AT GRADE OR A MAXIMUM OF 50mm HIGHER THAN FINISHED GRADE.
- REMOVE ALL NURSERY TAGS AND ANY TWINE, RIBBONS, OR ROPE ATTACHED TO CANOPY, STEM OR BRANCHES.
- TRIM ANY DEAD OR BROKEN BRANCHES USING APPROPRIATE ARBORICULTURE TECHNIQUES.



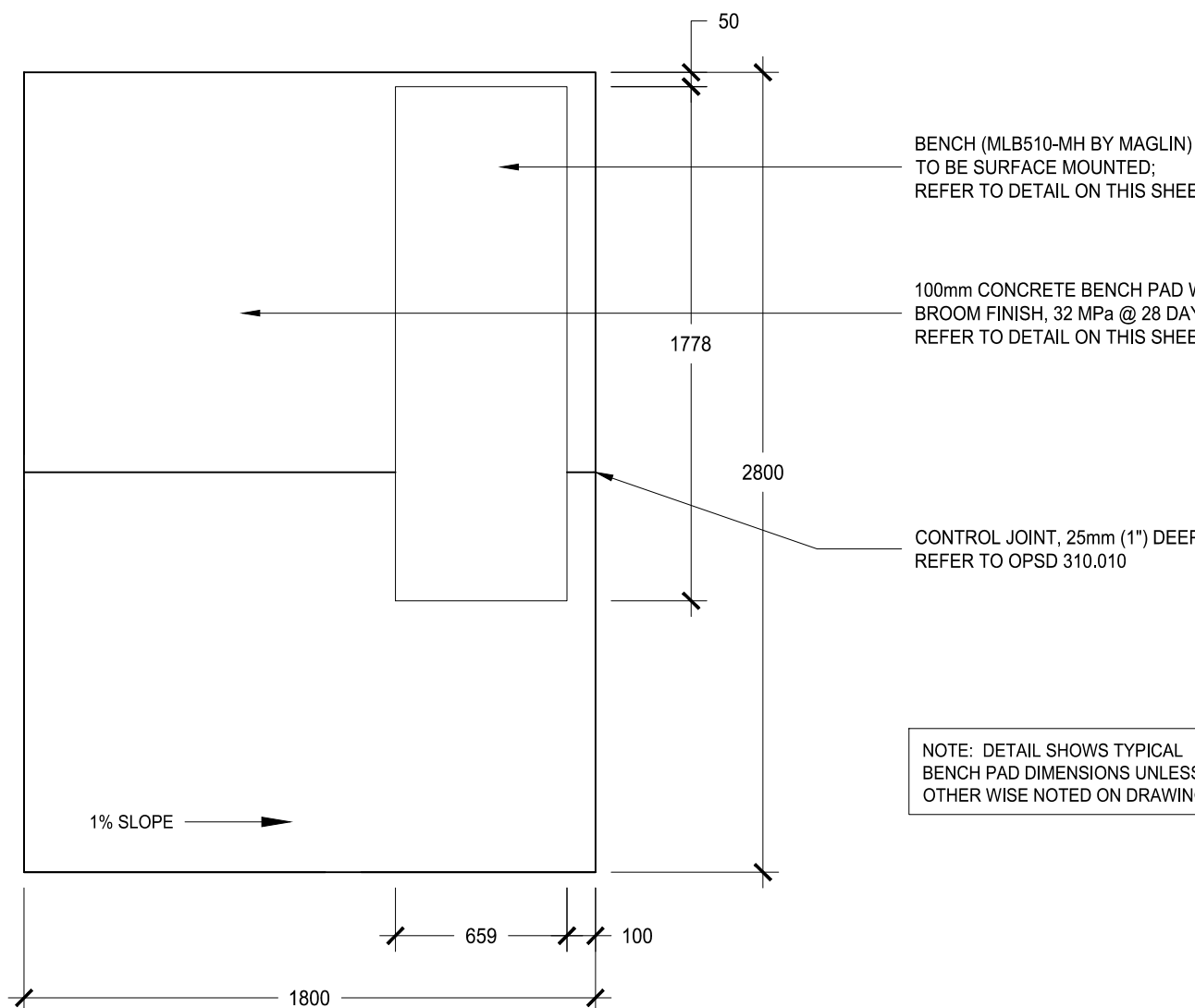
DECIDUOUS TREE PLANTING DETAIL
N.T.S.



UNIT PAVER PATHWAY AND PAD DETAIL
N.T.S.



ASPHALT PAVING DETAIL
N.T.S.




NOTE: DETAIL SHOWS TYPICAL BENCH PAD DIMENSIONS UNLESS OTHERWISE NOTED ON DRAWINGS

- ALL DIMENSIONS IN MILLIMETRES UNLESS OTHERWISE NOTED.

LD 6

BENCH ON CONCRETE PAD
N.T.S.



T 800-718-5506
F 877-260-9393
WWW.MAGLIN.COM
SALES@MAGLIN.COM

MLB510-MH


MATERIALS: Bench ends and seat are made from solid steel flat bar and H.S. steel tube.

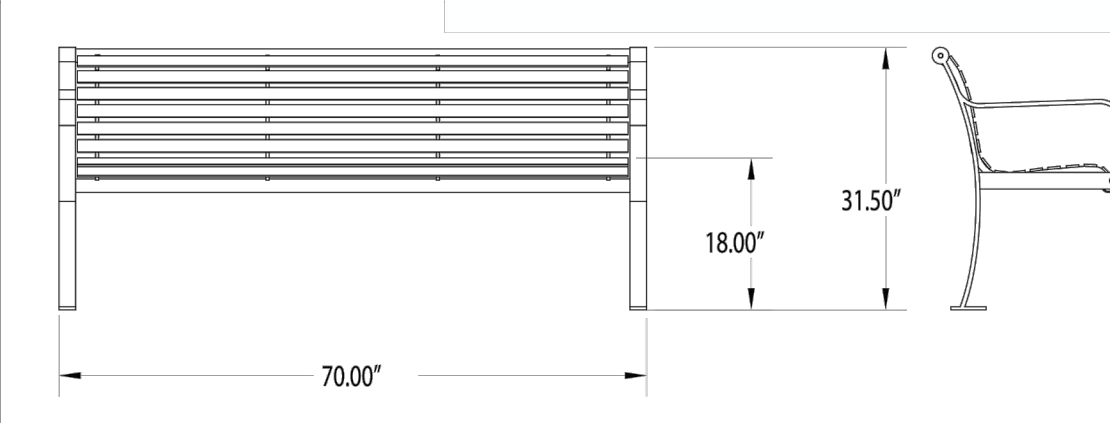
FINISH: All steel components are protected with E-Coat rust proofing. The Maglin Powdercoat System provides a durable finish on all metal surfaces.

INSTALLATION: The bench is delivered pre-assembled. Holes (Ø.5") are provided in each foot for securing to base.

TO SPECIFY: Select MLB510-MH Choose: - Powdercoat Color

COMPLEMENTARY PRODUCTS: - MLB510B-M - MLWP200-32 - MLP200



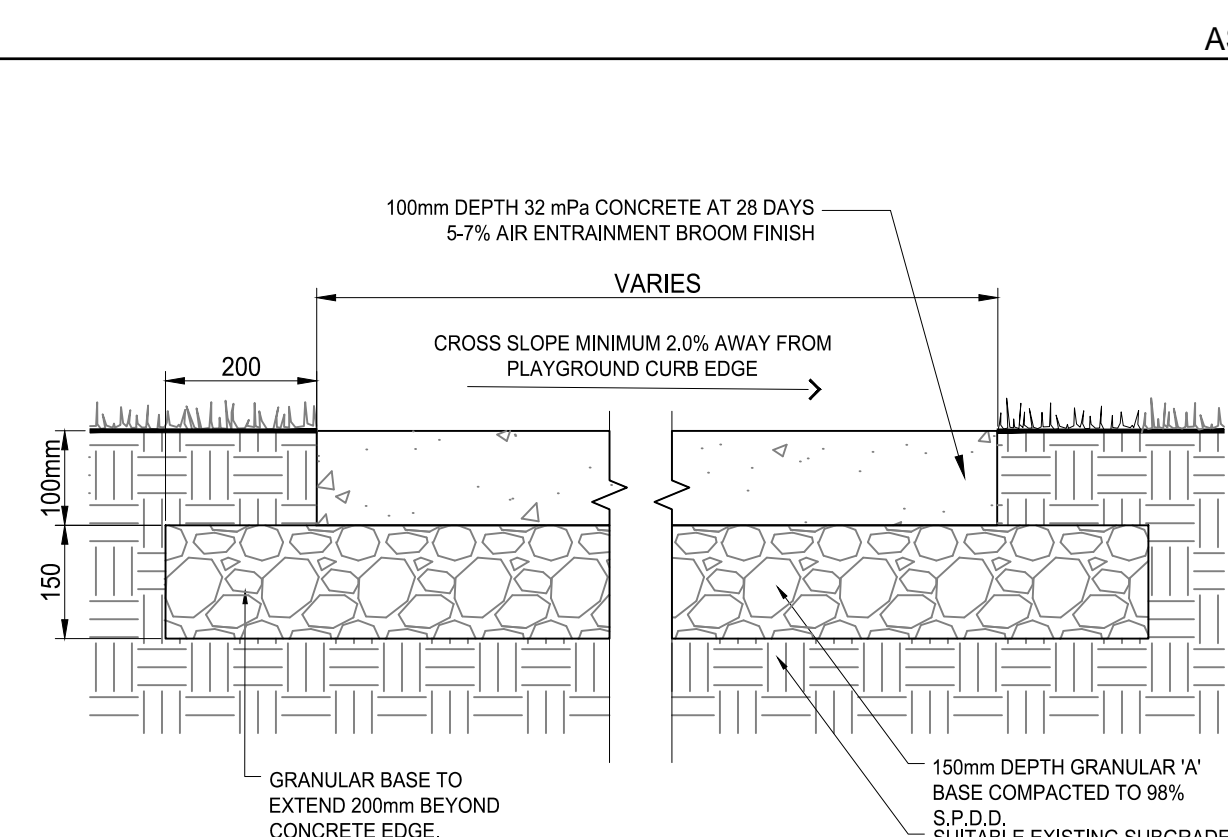


DIMENSIONS:
Height: 31.5" (80.0 cm)
Length: 70.0" (177.8 cm)
Seat: 18.0" (45.7 cm)
Weight: 190lbs (86.0kg)

Notes:
1. SHOP DRAWINGS TO BE SUBMITTED FOR APPROVAL PRIOR TO ORDERING.
2. POWDERCOAT TO BE BLACK GLOSS

LD 7

MAGLIN MLB510-MH BENCH DETAIL
SURFACE MOUNTED -N.T.S.



- EXCAVATE SPECIFIED MINIMUM DEPTH OR GREATER TO ENSURE REMOVAL OF ALL TOPSOIL AND UNSUITABLE SUBGRADE MATERIAL.
- CONCRETE TO BE 32MPa, CLASS C-2 AT 28 DAYS WITH 5-7% AIR ENTRAINMENT.
- CONCRETE TO HAVE BROOM FINISH.
- EXPANSION JOINTS TO BE LOCATED AT EVERY 6.0M
- CONTROL JOINTS TO BE LOCATED AT MINIMUM INTERVALS OF 3.0M
- REFER TO OPSD 310.010 FOR EXPANSION JOINT DETAILS.
- CONCRETE TO BE SPRAYED WITH WHITE PIGMENT CURING COMPOUND.
- ALL DIMENSIONS ARE IN MILLIMETRES UNLESS OTHERWISE NOTED.

LD 5

CONCRETE PAVING DETAIL
N.T.S.

Copyright Reserved

The Contractor shall verify and be responsible for all dimensions. DO NOT scale the drawing - any errors or omissions shall be reported to Stantec without delay.
The Contractor shall verify and be responsible for all dimensions. DO NOT scale the drawing - any errors or omissions shall be reported to Stantec without delay.
The Contractor shall verify and be responsible for all dimensions. DO NOT scale the drawing - any errors or omissions shall be reported to Stantec without delay.

Consultants

Legend

GENERAL NOTES

- Any ambiguity in the drawings, specifications or details are to be reported to the Landscape Architect for direction. These drawings shall not be used for construction unless stamped and signed by the Landscape Architect. The Contractor is not to proceed in uncertainty. The limits of work are to be clearly understood by the Contractor prior to any work taking place on the site.
- All dimensions are in meters unless otherwise noted. The drawings may be scaled for approximate layout. The Contractor is to verify all dimensions on the drawing(s) and report any discrepancies to the Landscape Architect.
- The Contractor is to locate and mark all infrastructure and utilities prior to any excavation work or planting on the site. Do not plant directly above underground utilities or infrastructure unless approved by the Landscape Architect. The Contractor is responsible for the coordination and maintenance of all utility/infrastructure located for the duration of the Contract.
- The Contractor shall supply all materials in quantities sufficient to complete work shown on these drawings. The Contractor is not to substitute materials, products or quantities without prior written consent of the Landscape Architect.
- The Contractor is to take all necessary precautions to protect all existing site features unless specified for removal/demolition. This includes all survey bars, stakes, monuments and sediment barriers. The Contractor is responsible for any damages incurred during construction and must make all necessary restorations and repairs to original or better condition.
- All existing trees, shrubs, and herbaceous plants beyond the limit of work are to be protected from construction damage. This includes but is not limited to: not storing construction materials or fuel within the dripline of an existing tree, not altering existing grades or compacting soil around protected vegetation and taking care not to disturb or expose the roots of any existing trees. The Contractor is responsible for all protection or hoarding measures of all existing trees and vegetation to be preserved within or adjacent to construction work limits.
- Contractor is responsible for the removal of all debris, garbage and surplus materials on site related to their contract or work and must keep the site in a clean, safe, useable condition at all times or as directed by the Contract Administrator.
- The Contractor shall obtain any necessary work and construction permit(s) required to complete the work as specified within the Contract.
- This drawing forms part of a set and may not be separated. This drawing is to be read in conjunction with the written specifications, drawings and details included in the contract document or drawing set.
- Contractor to verify location of all existing utilities prior to construction.
- All drainage from abutting lands must not be adversely affected during or after construction.
- The contractor shall control all sediment from leaving the site to the satisfaction of the engineer. The accuracy of the surface and subsurface details shown on the drawings are not guaranteed. The contractor shall investigate and verify for himself whether the information is correct and complete.

TREE PROTECTION NOTES

- All trees located within the project area designated for preservation or denoted as existing, and all trees located on adjacent properties shall be preserved.
- In the event that any trees designated for preservation located within the project area or on adjacent properties are damaged or killed by the actions of the Contractor, or their agents/sub-contractors, the Contractor will be responsible for the replacement of the destroyed plant material with material of equal value and comparable species to the satisfaction of the Landscape Architect and the Owner.
- Areas within the dripline of the trees are not to be used for any type of storage, e.g. storage of debris, construction material, surplus soils, and construction equipment. No trenching or tunnelling for underground services shall be located within the dripline of tree designated for preservation.
- Trees shall not have any rigging cables or hardware of any sort attached or wrapped around them, nor shall any contaminants be dumped within the protective areas. No contaminants shall be dumped or flushed where they may come into contact with the feeder roots of the trees.
- The Contractor will take every precaution to prevent damage to trees or shrubs. The Contractor will take every precaution to protect plant and root systems from damage, construction and contamination resulting from the construction to the satisfaction of the Landscape Architect. Where construction activities are required adjacent to trees and their drip line, tree protection fencing must be installed as per the approved tree protection fence detail.
- In the event that it is necessary to remove limbs or portions of trees to accommodate construction, the Landscape Architect is to be informed and the removal is to be executed carefully and in full accordance with arboriculture techniques.
- During excavation operations in which roots are affected, the Contractor is to prune all exposed roots cleanly. Pruned ends to point obliquely downwards. The exposed roots should not be allowed to dry out, and the contractor shall discuss watering of the roots with the owner and Landscape Architect so that the root mat shall maintain optimum soil moisture during construction and backfilling operations, yet so as not to interfere with construction operations.

PLANTING NOTES:

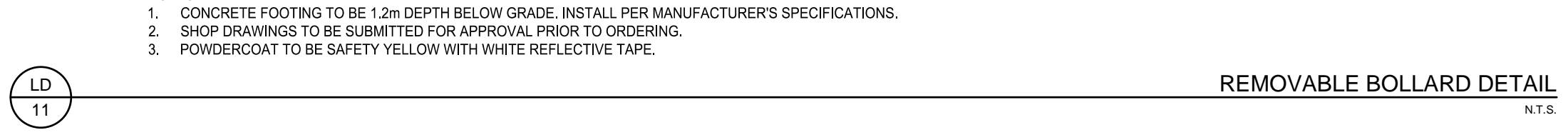
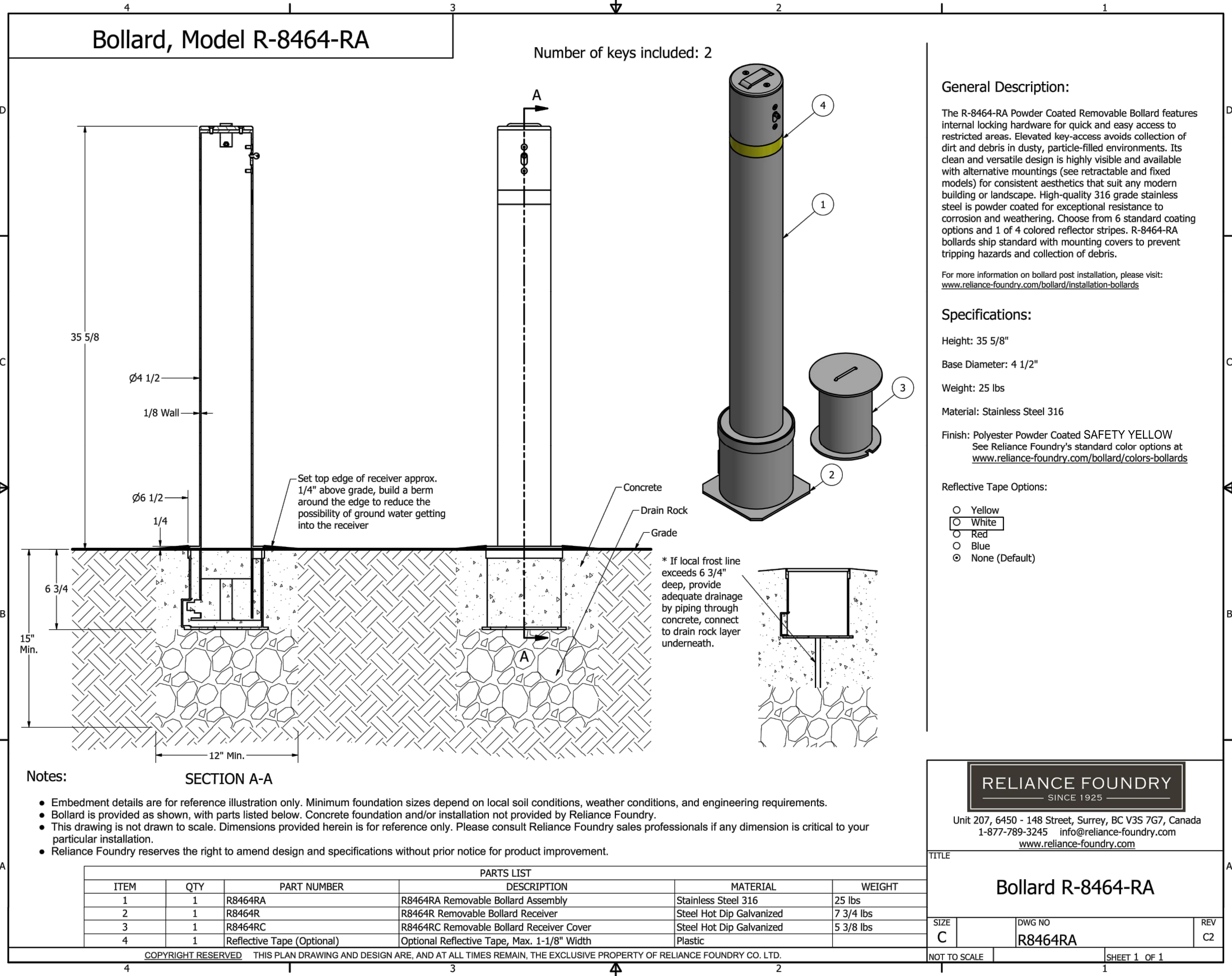
- All plant materials will be planted in an approved topsoil mix. No additional soils or additives will be permitted unless by the Landscape Architect at no additional cost to the project. Planting soil to be free from weeds, subsoil, roots, stones, lumps of clay and toxic material.
- Remove dead and/or damaged branches on trees or shrubs. All pruning shall be performed in accordance with standard horticultural practices and appropriate timing for each species.
- Plants are not to be installed during extreme heat, drought, or other undesirable conditions. Thoroughly water all plants immediately after installation. Contractor not to proceed in uncertainty. Contact Landscape Architect for direction.
- The Contractor is required to water plant material regularly or as directed by the Landscape Architect during construction and the two year warranty period. Plants will be watered within 48 hours of a written request by the Landscape Architect. Failure to do so after the second request will result in this work being undertaken by others. The cost of this work shall be deducted from the total contract price.
- Do not plant in drainage swales. Where proposed drainage swales conflict with proposed plantings, contact the Landscape Architect for direction.
- All trees are to be planted in accordance with the planting details shown on this drawing. Minor field adjustments to plant material locations may be necessary to respond to the locations of existing plants. Contractor to review with Landscape Architect where relocations are necessary. Contractor must receive approval from Landscape Architect prior to installation.
- Shredded pine mulch or an approved other will be spread uniformly around the base of all trees to a depth of 100mm. Do not place mulch in direct contact with trunks; allow a 50mm mulch free ring around trunks. Provide a sample of mulch to the Landscape Architect for approval prior to installation.
- All landscape works will be guaranteed for a period of two years following inspection substantial completion. Plant material, which is not in a healthy growing condition two years after inspection, shall be replaced to the satisfaction of the Landscape Architect / Client.
- The Contractor is responsible for location of all underground services prior to excavation of tree pits.
- All wood stakes and associated ties to be removed at the conclusion of the warranty period.
- Contractor to identify with owner and Landscape Architect any maintenance requirements necessary for warranty purposes.
- The Landscape Architect reserves the right to extend contractor's warranty responsibilities for an additional year, if at the end of initial warranty period, leaf development and growth is not sufficient to ensure future survival as determined by the Landscape Architect.

LOT GRADING NOTES

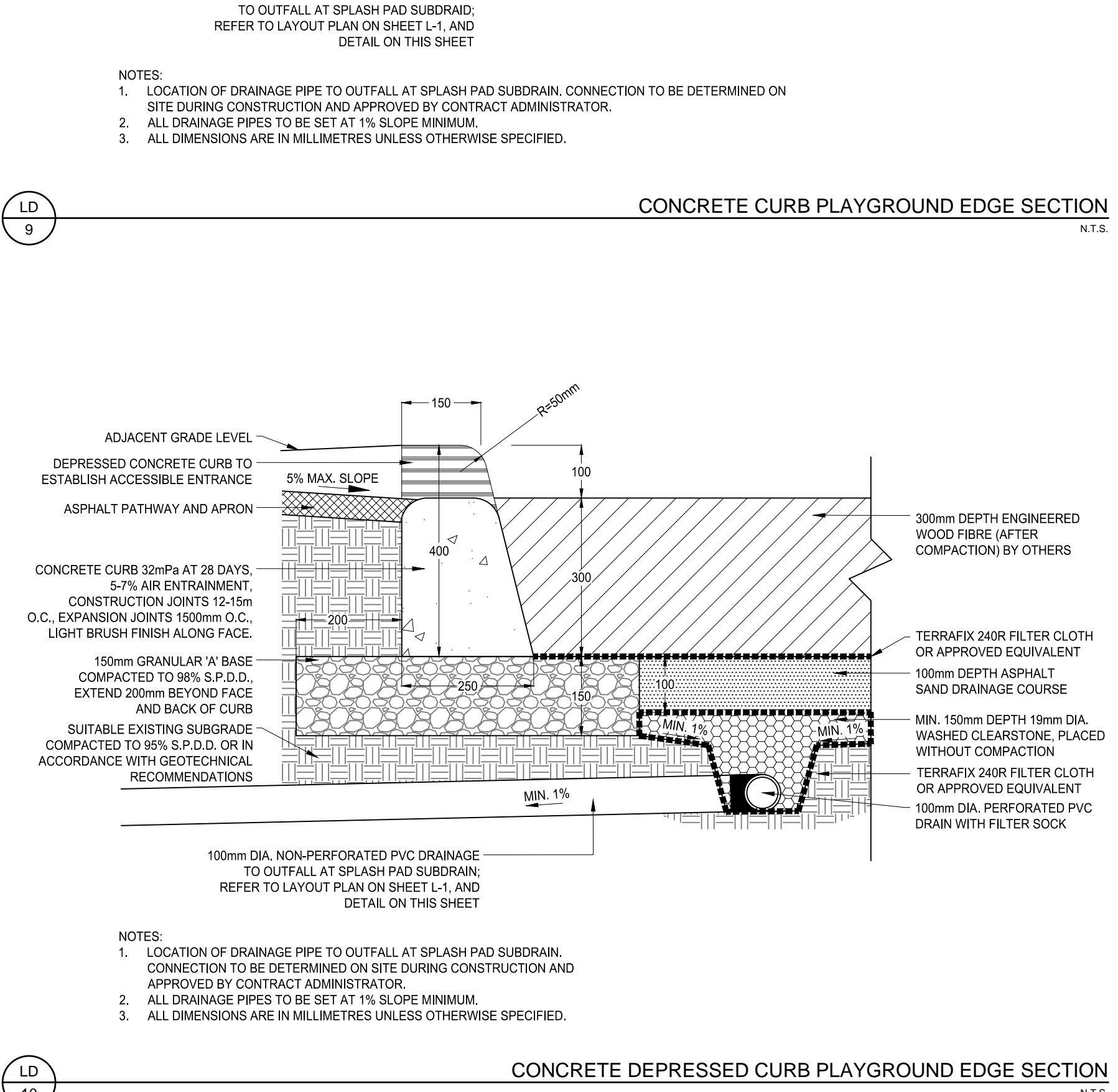
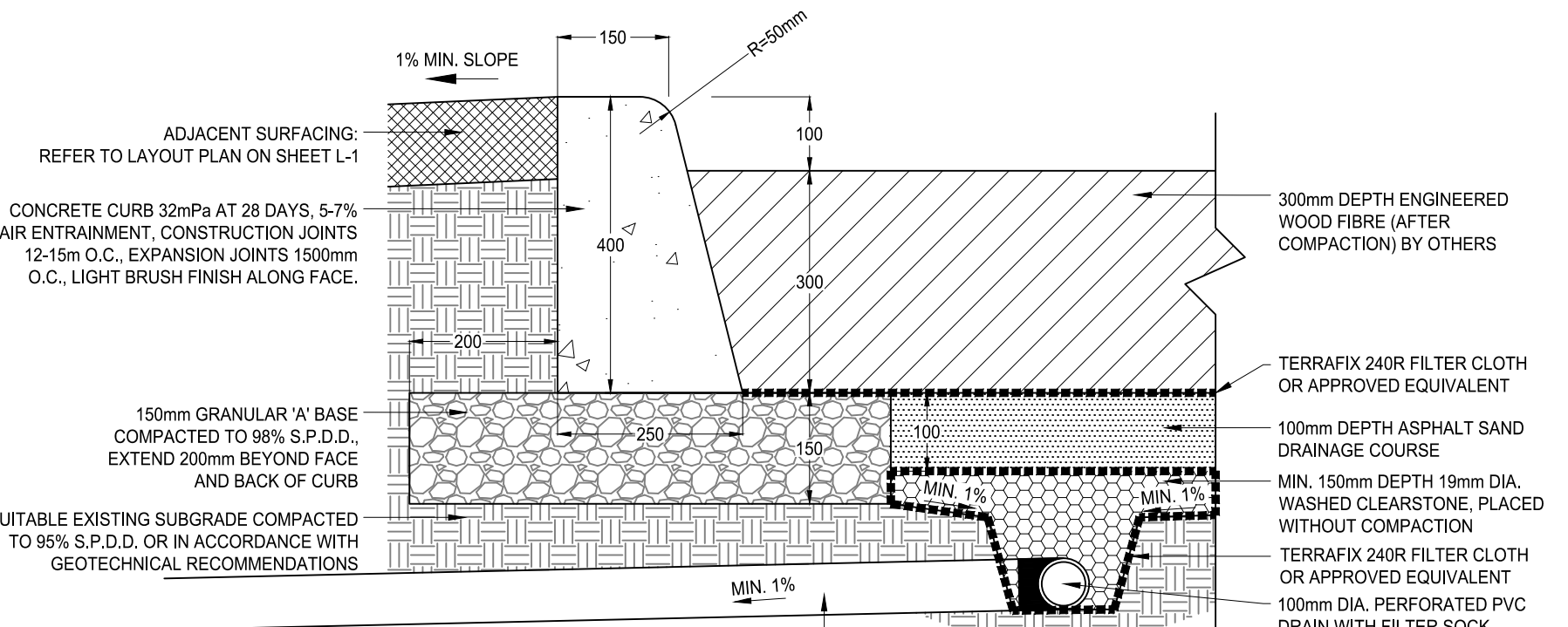
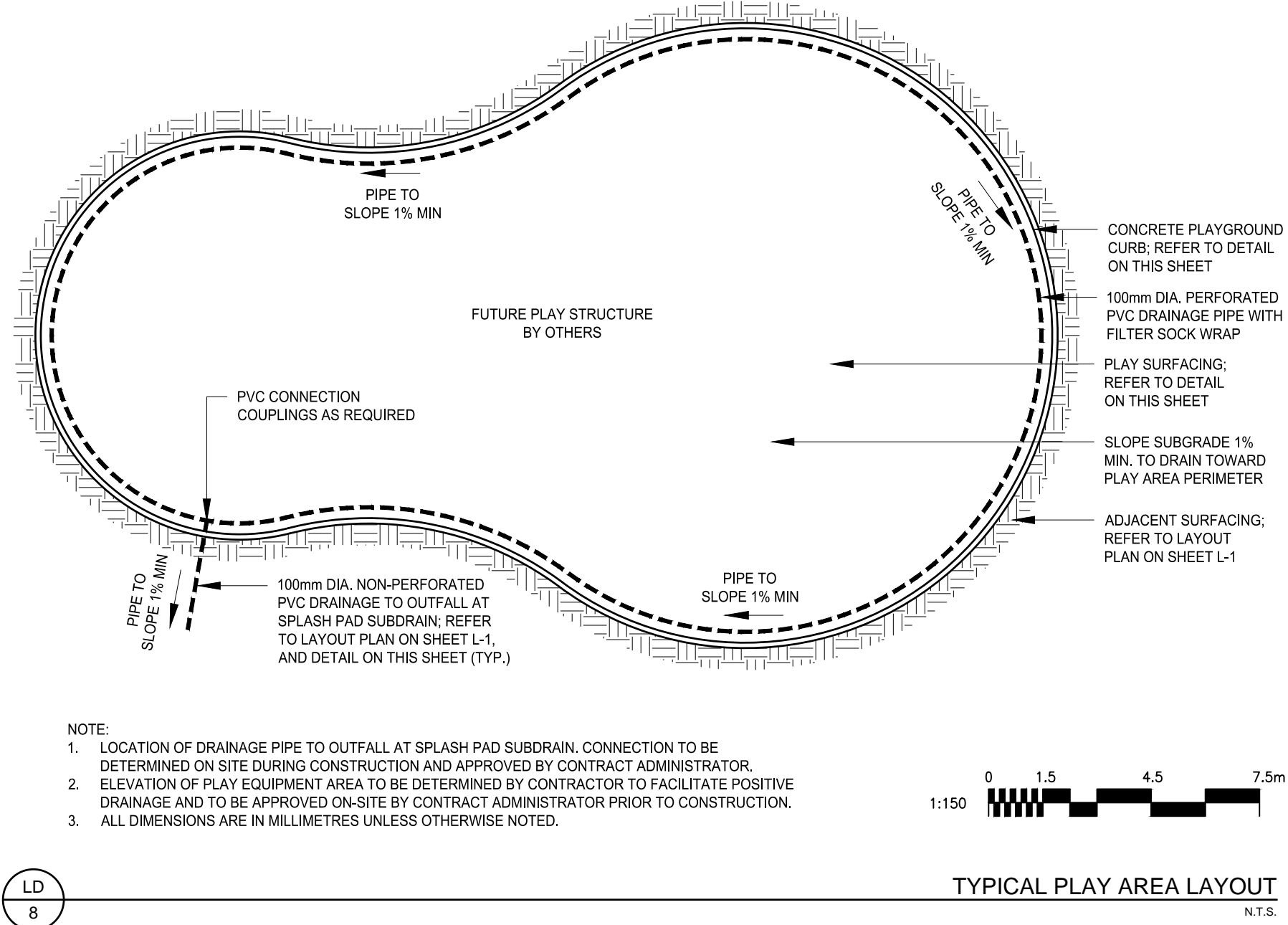
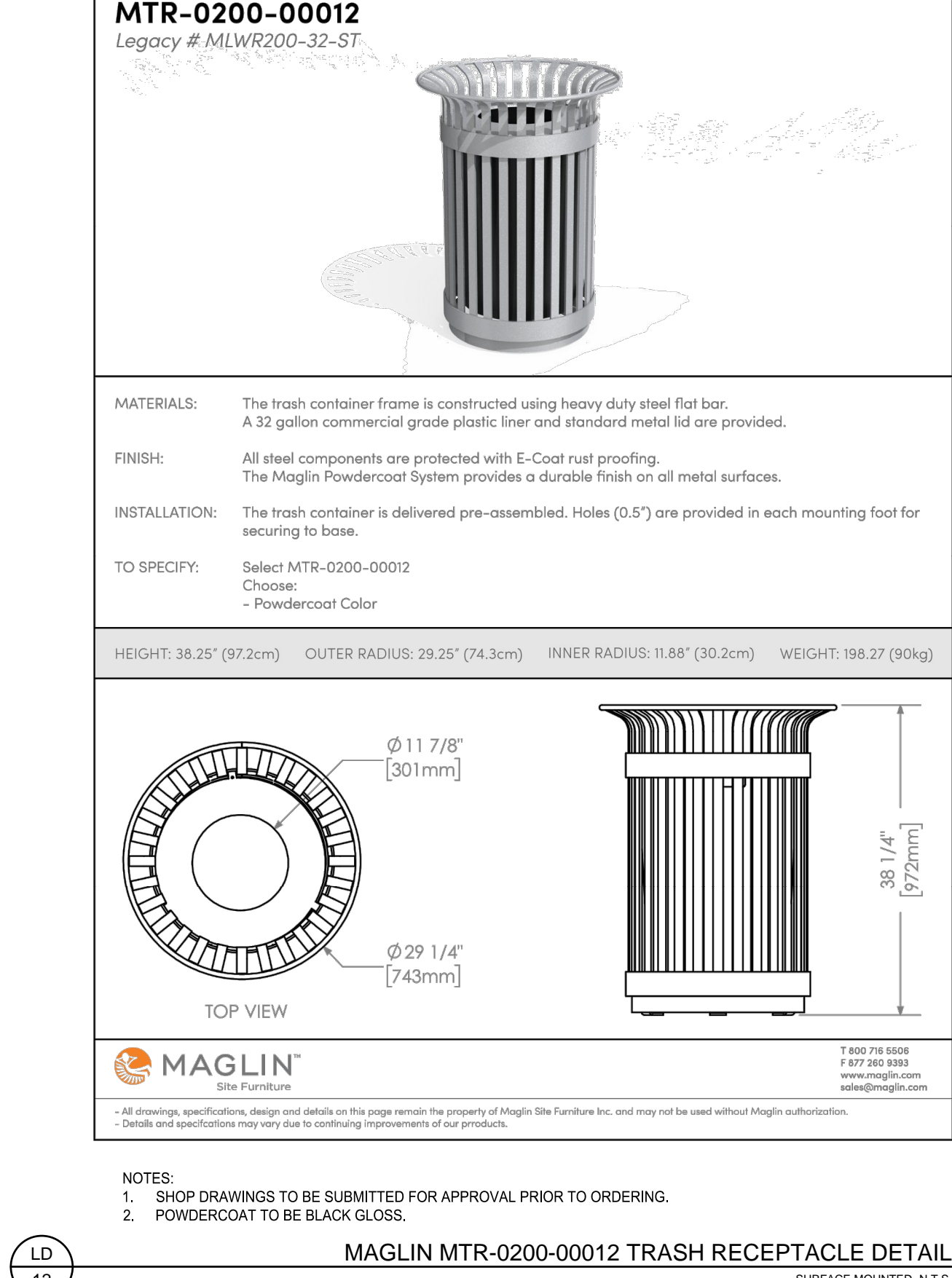
- Existing drainage of abutting land is not to be disturbed.
- All block drainage to be self contained.
- All existing catchbasins to have filter cloth added during construction.
- The Contractor shall construct temporary measures to control silt entering the storm drainage system to the specifications outlined in the guidelines on erosion and sediment control for urban construction sites prepared by the Ministry of Natural Resources. These measures are to be installed prior to commencing any construction for this subdivision/development/project and are to remain in place until construction has been completed to the specifications of the municipal engineer.

UTILITIES NOTES

- Contractor to verify location of all existing utilities prior to construction.
- Contractor coordinate with Hydro One and Union Gas as required for work being completed in the vicinity of existing infrastructure.



200 SERIES



Notes

- ALL DRAWINGS SHOULD BE REVIEWED WITH REFERENCE TO COMPLETE CONTRACT DOCUMENTS.

1. PER CLIENT COMMENTS	SU	HE	22.07.07
Revision	By	Appd.	YY.MM.DD
2. ISSUED FOR TENDER	SU	HE	22.07.07
1. ISSUED FOR 75% SUBMISSION	SU	HE	22.03.29
Issued	By	Appd.	YY.MM.DD
File Name: 161414223.rvt	SU	HE	SU
	Dwn.	Chkd.	Dsgn.
			YY.MM.DD

Permit-Seal



Client/Project
MUNICIPALITY OF MIDDLESEX CENTRE
WESTBROOK PARK IMPROVEMENTS

Kilworth, ON Canada

Title
LANDSCAPE NOTES AND DETAILS

Project No. 161414223
Drawing No. L-3

Scale SCALE AS SHOWN
Sheet 3 of 3
Revision 1