

APPENDIX J STAGE 1 ARCHAEOLOGICAL ASSESSMENT – KOMOKA PUMP STATION



Stage 1 Archaeological Assessment: Komoka Pump Station

Part of Lot 4, Concession 2, Geographic
Township of Lobo, now Municipality of
Middlesex Centre, Middlesex County, Ontario

December 23, 2024

Prepared for:
Municipality of Middlesex Centre
10227 Ilderton Road
Ilderton, Ontario N0M 2A0

Prepared by:
Stantec Consulting Ltd.
400 – 1305 Riverbend Road
London, Ontario N6K 0J5

Licensee: Parker Dickson, MA
License Number: P256
Project Information Form Number:
P256-0803-2024
Project Number: 165630236


ORIGINAL REPORT

Limitations and Sign-off

The conclusions in the Report titled Stage 1 Archaeological Assessment: Komoka Pump Station are Stantec's professional opinion, as of the time of the Report, and concerning the scope described in the Report. The opinions in the document are based on conditions and information existing at the time the scope of work was conducted and do not take into account any subsequent changes. The Report relates solely to the specific project for which Stantec was retained and the stated purpose for which the Report was prepared. The Report is not to be used or relied on for any variation or extension of the project, or for any other project or purpose, and any unauthorized use or reliance is at the recipient's own risk.

Stantec has assumed all information received from Municipality of Middlesex Centre (the "Client") and third parties in the preparation of the Report to be correct. While Stantec has exercised a customary level of judgment or due diligence in the use of such information, Stantec assumes no responsibility for the consequences of any error or omission contained therein.


This Report is intended solely for use by the Client in accordance with Stantec's contract with the Client. While the Report may be provided to applicable authorities having jurisdiction and others for whom the Client is responsible, Stantec does not warrant the services to any third party. The report may not be relied upon by any other party without the express written consent of Stantec, which may be withheld at Stantec's discretion.

Reviewed by:  Digitally signed by
Dickson, Parker
Date: 2024.12.23
12:48:08 -05'00'

Signature

Parker Dickson, MA – Senior Associate,
Senior Archaeologist

Printed Name and Title

Approved by:  Digitally signed by Colin
Varley
Date: 2024.12.23
12:48:41 -05'00'

Signature

Colin Varley, MA, RPA – Senior
Associate, Senior Archaeologist

Printed Name and Title



Executive Summary

The Municipality of Middlesex Centre (the Municipality) retained Stantec Consulting Ltd. (Stantec) to complete the Middlesex Centre Servicing Master Plan (SMP). From the SMP, the Municipality identified the need to upgrade and expand the Komoka Pump Station (the Project). The Project is being completed as part of a Schedule 'A' Municipal Class Environmental Assessment (Class EA) and the Stage 1 archaeological assessment was undertaken by Stantec, on behalf of the Municipality, in the preliminary planning and design process of the Class EA under the *Ontario Environmental Assessment Act* (Government of Ontario 1990a). The study area for the Project is located in part of Lot 4, Concession 2, Geographic Township of Lobo, now Municipality of Middlesex Centre, Middlesex County, Ontario. The study area comprises grassland, scrubland, a walking trail, and existing infrastructure, encompassing an area of approximately 3.0 hectares.

The Stage 1 archaeological assessment was completed under Project Information Form number P256-0803-2024, issued to Parker Dickson, MA by the Ministry of Citizenship and Multiculturalism (the MCM). A property inspection was conducted on May 16, 2024, by Parker Dickson (P256).

The Stage 1 archaeological assessment of the study area for the Project determined that approximately 60.0% (1.8 hectares) of the study area retains archaeological potential. In accordance with Section 1.3.1 and Section 7.7.4 of the MCM's 2011 *Standards and Guidelines for Consultant Archaeologists* (Government of Ontario 2011), **Stage 2 archaeological assessment is required for any portion of the Project's anticipated construction activities which impact an area of archaeological potential.**

The Stage 1 archaeological assessment determined that the remaining portions of the study area, approximately 40.0% (1.2 hectares), retain low to no archaeological potential due to areas subject to deep and extensive modern disturbances such as walking trails, artificial berms, and existing municipal infrastructure. In accordance with Section 1.3.2 and Section 7.7.4 of the MCM's 2011 *Standards and Guidelines for Consultant Archaeologists* (Government of Ontario 2011), **Stage 2 archaeological assessment is not required for any portion of the Project's anticipated construction activities which impact an area of low to no archaeological potential.**

Full and detailed recommendations are provided in the body of the report.

The MCM is asked to review the results presented and to enter this report into the *Ontario Public Register of Archaeological Reports*.

The Executive Summary highlights key points from the report only; for complete information and findings, the reader should examine the complete report.



Table of Contents

Limitations and Sign-off	i
Executive Summary	i
Project Personnel	iii
Acknowledgements	iii
Acronyms / Abbreviations	iv
1 Project Context	1
1.1 Development Context	1
1.1.1 Objectives	1
1.2 Historical Context	2
1.2.1 Pre-Contact Indigenous Resources	2
1.2.2 Post-Contact Indigenous Resources	4
1.2.3 Euro-Canadian Resources	6
1.2.4 Heritage Properties	8
1.3 Archaeological Context	8
1.3.1 The Natural Environment	8
1.3.2 Registered Archaeological Sites and Surveys	9
1.4 Existing Conditions	10
2 Field Methods	11
3 Analysis and Conclusions	12
4 Recommendations	14
5 Advice on Compliance with Legislation	15
6 Bibliography	16
7 Images	19
7.1 Photographs	19
8 Maps	21

List of Tables

Table 1: Generalized Cultural Chronology of the Study Area	2
Table 2: Summary of Landowners and Features near the Study Area	7
Table 3: Registered Archaeological Sites within One Kilometre of the Study Area	9

List of Figures

Figure 1: Location of the Study Area	22
Figure 2: Detailed Location of the Study Area	23
Figure 3: Treaties and Purchases (Adapted from Morris 1943)	24
Figure 4: Portion of the 1862 Historical County Map of Middlesex County	25
Figure 5: Portion of the 1878 Illustrated Historical Atlas of the County of Middlesex	26
Figure 6: Stage 1 Archaeological Assessment Results	27



Project Personnel

Licensed Archaeologist	Parker Dickson, MA (P256)
Project Manager	Jeff Paul, P.Eng.
Licensed Field Director	Parker Dickson, MA (P256)
Report Writer	Creighton Avery, Ph.D.
GIS Analysts	Kai Tang, Kent Buchanan
Quality Review	Parker Dickson, MA
Independent Review	Colin Varley, MA, RPA (P002)

Acknowledgements

Municipality of Middlesex Centre	Rob Cascaden, Director – Public Works and Engineering
-------------------------------------	---



Acronyms / Abbreviations

The Municipality	Municipality of Middlesex Centre
Stantec	Stantec Consulting Ltd.
Servicing Master Plan	SMP
Class EA	Class Environmental Assessment
ROW	Right-of-way
MCM	Ministry of Citizenship and Multiculturalism
BP	Before Present
GIS	Geographical Information Services
GNSS	Global Navigation Satellite System



1 Project Context

1.1 Development Context

The Municipality of Middlesex Centre (the Municipality) retained Stantec Consulting Ltd. (Stantec) to complete the Middlesex Centre Servicing Master Plan (SMP). The purpose of the SMP was to update the strategy previously developed in 2010 (Middlesex Centre 2024). Since the completion of the 2010 SMP, the Municipality has experienced growth in settlement areas which has prompted servicing extensions and infrastructure upgrades not captured in the previous study. As such, the SMP examines the servicing system by reviewing new planning policies; considering population and development growth projections; reviewing current and future needs that exist in the Municipality; aligning with and supporting the Municipality's Official Plan and other strategic plans and policies; and, supporting planned growth within the Municipality to the year 2042 (Middlesex Centre 2024). The SMP will identify shortcomings in the water, wastewater, stormwater, and solid waste servicing systems, and identify a preferred solution(s) to support planned growth in the Municipality to the year 2042. From the SMP, the Municipality identified the need to upgrade and expand the Komoka Pump Station (the Project).

The Project is being completed as part of a Schedule 'A' Municipal Class Environmental Assessment (Class EA) and the Stage 1 archaeological assessment was undertaken by Stantec, on behalf of the Municipality, in the preliminary planning and design process of the Class EA under the *Ontario Environmental Assessment Act* (Government of Ontario 1990a). The study area for the Project is located in part of Lot 4, Concession 2, Geographic Township of Delaware, now Municipality of Middlesex Centre, Middlesex County, Ontario. The study area comprises grassland, scrubland, a walking trail, and existing infrastructure, encompassing an area of approximately 3.0 hectares (Figure 1 and Figure 2).

1.1.1 Objectives

In compliance with the provincial standards and guidelines set out in the Ministry of Citizenship and Multiculturalism's (MCM's) 2011 *Standards and Guidelines for Consultant Archaeologists* (Government of Ontario 2011), the objectives of the Stage 1 archaeological assessment are to:

- Provide information about the study area's geography, history, previous archaeological fieldwork, and current land conditions.
- Evaluate the study area's archaeological potential, which will support recommendations for Stage 2 survey for all or parts of the property.
- Recommend appropriate strategies for Stage 2 survey.

To meet these objectives, Stantec archaeologists:

- Reviewed relevant archaeological, historical, and environmental literature pertaining to the study area.
- Reviewed the land use history of the study area, including pertinent historical maps.
- Examined the *Ontario Archaeological Sites Database* to determine the presence of registered archaeological sites in and around the study area.



- Queried the *Ontario Public Register of Archaeological Reports* to identify previous archaeological assessments which have occurred within 50 metres of the study area.
- Completed a property inspection of the study area.

Permission to enter the study area for the property inspection was provided by the Municipality.

1.2 Historical Context

“Contact” is typically used as a chronological benchmark when discussing Indigenous archaeology in Canada and describes the interaction between Indigenous and European nations. There is no definitive moment of contact and the understanding of when Indigenous and European nations first began to influence one another is evolving with new study of archaeological and historical evidence, and from Indigenous oral tradition and history. Contact in what is now the Province of Ontario is broadly assigned to the 16th century (Loewen and Chapdelaine 2016).

1.2.1 Pre-Contact Indigenous Resources

It has been demonstrated that Indigenous people began occupying southern Ontario as early as 11,000 years ago as the Laurentide glacier receded (Ellis and Ferris 1990, 13). Much of what is understood about the lifeways of these Indigenous peoples is derived from archaeological evidence and ethnographic analogy. In Ontario, Indigenous culture prior to contact with European peoples has been distinguished into archaeological periods based on observed changes in material culture. These archaeological periods are largely based on observed changes to formal lithic tools. They are separated into the Early Paleo, Late Paleo, Early Archaic, Middle Archaic, Late Archaic, and Terminal Archaic periods. Following the advent of ceramic technology in the Indigenous archaeological record, archaeological periods are separated into the Early Woodland, Middle Woodland, and Late Woodland periods, based primarily on observed changes in formal ceramic decoration.

It should be noted that these archaeological periods do not necessarily represent specific cultural identities but are a useful paradigm for understanding changes in Indigenous culture through time. The current understanding of Indigenous archaeological culture is summarized in Table 1, based on Ellis and Ferris (1990). The provided periods are based on the “Before Present” (BP) calendar notation system, wherein BP stands for the years before the present. The “Present Year” is set in the calendar year 1950.

Table 1: Generalized Cultural Chronology of the Study Area

Archaeological Period	Characteristics	Time Period	Comments
Early Paleo	Fluted Projectiles	10,950 – 10,350 BP	Spruce parkland/caribou hunters
Late Paleo	Hi-Lo Projectiles	10,350 – 9,950 BP	Smaller but more numerous sites
Early Archaic	Kirk and Bifurcate Base Points	9,950 – 7,950 BP	Slow population growth
Middle Archaic	Brewerton-like points	7,950 – 4,450 BP	Environment similar to present
Late Archaic	Narrow Points	4,450 – 3,750 BP	Increasing site size
	Broad Points	3,750 – 3,450 BP	Large chipped lithic tools



Archaeological Period	Characteristics	Time Period	Comments
	Small Points	3,450 – 3,050 BP	Introduction of bow hunting
Terminal Archaic	Hind Points	3,050 – 2,900 BP	Emergence of true cemeteries
Early Woodland	Meadowood Points	2,900 – 2,350 BP	Introduction of pottery
Middle Woodland	Dentate/Pseudo-Scallop Pottery	2,350 – 1,400 BP	Increased sedentism
	Princess Point Pottery	1,400 – 1,050 BP	Introduction of corn
Late Woodland	Early Late Woodland Pottery	1050 – 650 BP	Emergence of agricultural villages
	Middle Late Woodland Pottery	650 – 550 BP	Long longhouses (100+ metres)
	Late Late Woodland Pottery	550 – 350 BP	Tribal warfare and displacement

Between 10,950 and 9,950 BP, Indigenous populations were sustained by hunting, fishing, and foraging and lived a relatively nomadic existence across an extensive geographic territory. Despite these wide territories, social ties were maintained between groups. One method of maintaining social ties was through gift exchange, which was evident through exotic lithic material documented on many sites (Ellis 2013, 35-40).

By approximately 9,950 BP, evidence existed and became more common for producing ground-stone tools such as axes, chisels, and adzes. These tools themselves are believed to be indicative specifically of woodworking. This evidence can be extended to indicate an increased craft production and, arguably, craft specialization. This latter statement is supported by evidence dating to approximately 8,950 BP of ornately carved stone objects, which would be laborious to produce and have explicit aesthetic qualities (Ellis 2013, 41). This indirectly indicates changes in the social organization, which permitted individuals to devote time and effort to craft specialization. Since 9,950 BP, the Great Lakes basin experienced a low-water phase, with shorelines significantly below current lake levels (Stewart 2013, Figure 1.1.C). It is presumed that the majority of human settlements would have been focused along these former shorelines. At approximately 8,450 BP, the climate had warmed considerably since the recession of the glaciers, and the environment had grown more similar to the present day. By approximately 6,450 BP, evidence exists from southern Ontario for using native copper, i.e., naturally occurring pure copper metal (Ellis 2013, 42). The recorded origin of this material along Lake Superior’s north shore indicates extensive exchange networks across the Great Lakes basin.

At approximately 5,450 BP, the isostatic rebound of the North American plate following the melt of the Laurentide glacier had reached a point that significantly affected the Great Lakes basin watershed. Prior to this, the Upper Great Lakes had drained down the Ottawa Valley via the French River and Mattawa River valleys. Following this shift in the watershed, the drainage of the Great Lakes basin changed to its present course. This also prompted a significant increase in water-level to approximately current levels (with a brief high-water period); this change in water levels is believed to have occurred catastrophically (Stewart 2013, 28-30). This change in geography coincides with the earliest evidence for cemeteries (Ellis 2013, 46). By 4,450 BP, the earliest evidence exists for constructing fishing weirs (Ellis et al. 1990, Figure 4.1). However, the construction of fishing weirs could have occurred as early as 8,600 BP (Stevens 2004). Regardless, the construction of fishing weirs would have required a large amount of communal labour and indicates the continued development of social organization and communal identity. The large-



scale food procurement at a single location also has significant implications for the permanence of settlement within the landscape. This period is also marked by further population increase; by 3,450 BP, evidence exists for substantial permanent structures (Ellis 2013, 45-46).

By approximately 2,900 BP, the earliest evidence exists for populations using ceramics. Populations are understood to have continued to exploit natural resources seasonally. However, this advent of ceramic technology correlated with the intensive exploitation of seed foods such as goosefoot and knotweed and mast such as nuts (Williamson 2013, 48). The use of ceramics implies changes in the social organization of food storage, cooking, and diet. Fish also continued to be an important facet of the economy at this time. Evidence continues for the expansion of social organization (including hierarchy), group identity, ceremonialism (particularly in burial), interregional exchange throughout the Great Lakes basin and beyond, and craft production (Williamson 2013, 48-54).

By approximately 1,400 BP, evidence emerged for introducing maize into southern Ontario. This crop would have initially only supplemented Indigenous people's diet and economy (Birch and Williamson 2013, 13-14). Maize-based agriculture gradually became more important to societies. By approximately 900 CE, permanent communities emerged primarily focused on agriculture and the storage of crops, with satellite locations oriented toward procuring other resources such as hunting, fishing, and foraging. By approximately 700 BP, evidence exists for the common cultivation of historic Indigenous cultigens, including maize, beans, squash, sunflower, and tobacco. The extant archaeological record demonstrates many cultural traits similar to historical Indigenous nations (Williamson 2013, 55).

1.2.2 Post-Contact Indigenous Resources

The post-contact Indigenous occupation of southern Ontario was heavily influenced by the dispersal of various Iroquoian-speaking communities by the New York State Iroquois and the subsequent arrival of Algonkian-speaking groups from northern Ontario at the end of the 17th century and beginning of the 18th century (Konrad 1981, Schmalz 1991). By 1690, Algonkian speakers from the north appear to have begun repopulating Bruce County (Rogers 1978, 761). This is when the Mississaugas are known to have moved into southern Ontario and the lower Great Lakes watersheds (Konrad 1981). In southwestern Ontario, however, members of the Three Fires Confederacy (Chippewa, Ottawa, and Potawatomi) immigrated from Ohio and Michigan in the late 1700s (Feest and Feest 1978, 778-779). At approximately 1790, the study area was occupied by populations of Ottawa, Chippewa, Pottawatomi, and Wyandot (Feest and Feest 1978, 777, 779).

From the mid-16th century until the turn of the 17th century, the region of the study area was within the extended political territory of Iroquoian populations who were probably ancestral to those historically described as the *Neutre* (by the French), *Neutral* (by the English), or the *Atawandaron* (by the Huron-Wendat); their autonym is not conclusively known (Birch 2015). Following the turn of the 17th century, the region of the study area seems to have been abandoned by permanent settlement and constituted a liminal territory between the Atawandaron and the Fire Nation, an Algonquian group occupying the western end of Lake Erie. It is argued, however, that the Atawandaron expanded extensively westward, displacing the Fire Nation and occupying the region of modern Chatham-Kent (Lennox and Fitzgerald 1990, 418-419).



Stage 1 Archaeological Assessment: Komoka Pump Station

Project Context

December 23, 2024

It is debated whether the Fire Nation were descendent from the archaeologically described Western Basin Tradition (which is documented throughout the Thames River Valley watershed since approximately 1250 BP) or if they migrated into the western part of Lake Erie, displacing a previous Indigenous culture (Murphy and Ferris 1990, 193-194). In 1649, the Seneca and the Mohawk led a campaign into southern Ontario and dispersed the Huron-Wendat, Tionontati (Petun), and Atawandaron, and the Seneca established dominance over the region and used it for a hinterland for beaver hunting (Heidenreich 1978). By 1690, Ojibwa-speaking people had begun moving south into the lower Great Lakes basin. From the turn of the 18th century, the Indigenous economy focused on fishing and the fur trade, supplemented by agriculture and hunting (Konrad 1981; Rogers 1978). Generally, the study area falls within the traditional territory of the Bkejwanong (Walpole Island) First Nation, the Aamjiwnaang (Sarnia) First Nation (Aamjiwnaang First Nation), the Wiikwedong and Aazhoodena (Kettle Point and Stony Point) First Nation, and the Deshkaan Ziibing Anishinaabeg (Chippewas of the Thames First Nation).

The expansion of the fur trade led to increased interaction between European and indigenous people and, ultimately, intermarriage between European men and Indigenous women. During the 18th century, the progeny of these marriages began to identify no longer with either their paternal or maternal cultures but as Métis. The ethnogenesis of the Métis progressed with the establishment of distinct Métis communities along the major waterways in the Great Lakes of Ontario. Métis communities were primarily focused around the upper Great Lakes and along Georgian Bay; however, Métis people have historically lived throughout Ontario (Métis Nation of Ontario 2024; Stone and Chaput 1978, 607-608).

Despite the differentiation among Indigenous groups in Euro-Canadian sources, there was a considerably different view by Indigenous communities concerning their self-identification during the first few centuries of European contact. These peoples relied upon kinship ties that cut across European notions of nation identity (Bohaker 2006, 277-283). Many of the British-imposed nation names, such as Chippewa, Ottawa, Potawatomi, or Mississauga, artificially separated how self-identified Anishinaabeg classified themselves (Bohaker 2006, 1-8) and as a result, a number of these groups were culturally and socially more alike than contemporary European documentation might indicate.

Since contact with European explorers and immigrants and, later, with the establishment of provincial and federal governments (the Crown), the lands within Ontario have been included in various treaties, land claims, and land cessions. Though not an exhaustive list, Morris (1943) outlines some treaties within the Province of Ontario from 1783 to 1923. Based on Morris (1943), the study area is situated within Treaty Number 21. Treaty Number 21 was established on March 19, 1819, between the Crown and the Chippewa. The treaty commences:

.....at the northerly side of the River Thames at the south west angle of the Township of London; thence along the western boundary of the Township of London, in a course north 21 degrees, 30 minutes west, twelve miles to the north west angle of the said Township; then on a course about south 62 degrees and 30 minutes west forty-eight miles more or less until it intersects a line on a course produced north two miles from the north east angle of the Shawnee [Sombra] Township; then along the eastern boundary line of the said Township, twelve miles and a half more or less to the northern boundary line of the Township of Chatham; then east twenty-four miles more or less to the River Thames;



then along the water[']s edge of the River Thames against the stream to the place of beginning, reserving a tract of land situate[d] on the northerly side of the River Thames nearly opposite to the northerly angle of the Township of Southwold and south west angle of the Del[a]ware Township containing 15,360 acres; also reserving two miles square distant about four miles above the rapids where the Indians have their improvements and nearly parallel to the Moravian Village containing 5,120 acres.

(Morris 1943, 24-25)

While it is difficult to exactly delineate treaty boundaries today, Figure 3 provides an approximate outline of Treaty Number 21 (identified by the letter "R").

The nature of Indigenous settlement size, population distribution, and material culture shifted as European settlers encroached upon their territory. However, despite this shift, "written accounts of material life and livelihood, the correlation of historically recorded villages to their archaeological manifestations, and the similarities of those sites to more ancient sites have revealed an antiquity to documented cultural expressions that confirms a deep historical continuity to...systems of ideology and thought" (Ferris 2009, 114). As a result, Indigenous peoples have left behind archaeological resources throughout southern Ontario, which show continuity with past peoples, even if they have not been recorded in Euro-Canadian documentation.

1.2.3 Euro-Canadian Resources

In 1791, the Provinces of Upper Canada and Lower Canada were created from the former Province of Quebec by an act of British Parliament. At this time, Colonel John Graves Simcoe was appointed as the Lieutenant Governor of Upper Canada and was tasked with governing the new province, directing its settlement, and establishing a constitutional government modelled after that of Britain. In 1792, Simcoe divided Upper Canada into 19 counties consisting of previously settled lands, new lands opened for settlement, and lands not yet acquired by the Crown. These new counties stretched from Essex in the west to Glengarry in the east.

1.2.3.1 Middlesex County

The County of Middlesex, located in the London District, comprised ten townships: Aldborough, Dunwich, Southwold, Yarmouth, Malahide, Bayham, Delaware, Westminster, Dorchester, and London. By 1842, the population of Middlesex County had reached over 31,000 European inhabitants. The area developed quickly, and over the next two years, roughly 7,300 hectares of land became cleared for agricultural purposes. By 1844, the county's agricultural lands exceeded 52,000 hectares (Smith 1846). Middlesex County was known for its many good roads at this time. Between 1846 and 1849, Middlesex County comprised the townships of Adelaide, Aldborough, Bayham, Caradoc, Delaware, Dorchester, Dunwich, Ekfrid, Lobo, London, Metcalfe, Mosa, Malahide, Southwold, Westminster, Williams, Yarmouth, and the Town of London. The townships of Yarmouth, London, Lobo, Westminster, Southwold, and Malahide were the best settled and, overall, the county contained many good farms with large clearings and expansive orchards (Smith 1846).



1.2.3.1.1 Geographic Township of Lobo

Colonel Burwell completed the survey of Lobo Township between 1819 and 1821. Lots were divided into 200-acre parcels arranged in 13 concessions. The township was named Lobo (“wolf” in Latin) by the British general Peregrine Maitland who was appointed lieutenant governor of Upper Canada between 1818 and 1828. Shortly after the survey, the first European settlers, many from Argyllshire in Scotland, arrived in Lobo Township (Goodspeed 1889). The principal settlements were the villages of Komoka, Lobo, Coldstream, and Poplar Hill. The township’s population was growing slowly and reached 2,680 in 1888 (Goodspeed 1889). In 1998, Lobo Township, together with London and Delaware townships, was amalgamated to form the Municipality of Middlesex Centre.

The village of Komoka was originally defined by three official surveys: the Wellington Survey of 1853, which established the west side; the Geddes Survey of 1854, which established the east side; and the Komoka Survey of 1855. Over time, Komoka became a crossing point of several railway lines, including the Great Western Railway and the Sarnia Branch of the Canadian National Railway, and featured several hotels, general stores, and a post office. A settlement at Kilworth, approximately three kilometres northwest of the study area, began in 1798 by the Woodhull family, who had fled New York State during the American Revolutionary War (Goodspeed 1889). A post office was opened in 1851 and in the same year the population of the hamlet approached 200 (Goodspeed 1889).

1.2.3.1.2 Historical Map Review

The 1862 *Historical County Map of Middlesex County* (Tremaine 1862) indicates a well populated township with multiple railroads and small towns, including the village of Komoka within the vicinity of the current study area (Figure 4). The 1878 *Illustrated Historical Atlas of the County of Middlesex, Ont.’s* (Page & Co. 1878) map of the Township of Lobo depicts a rural landscape with numerous landowners, structures, early transportation routes, railroads, and early town sites (Figure 5). The Great Western Railroad, as well as its Sarnia Branch, are illustrated running northeast to southwest through the township. The early Euro-Canadian community of Komoka appears to be well established and numerous structures and landowners are illustrated adjacent to the study area.

The study area is located in part of Lot 4, Concession 2. Table 2 summarizes occupants of relevant lots within Middlesex County, including features as indicated on the 1862 (Tremaine 1862) and 1878 (Page & Co. 1878) historical maps.

Table 2: Summary of Landowners and Features near the Study Area

Lot	Concession	Portion	1862 Map	1878 Map
4	2	North quarter (¼)	William Horton (rail line) N. Montgomery (rail line)	D. Robinson (homestead, orchard, rail line, village of Komoka)
		North-central ¼	P. H. Giddles Village of Kamoka	
		South-central ¼	O. S. Blackford (rail line)	P. H. Giddles (rail line)



Lot	Concession	Portion	1862 Map	1878 Map
		South ¼	M. G. (schoolhouse) W. R. (inn)	M. Graham (homestead, orchard) J. C. (homestead, orchard)

In discussing the late 19th century historical mapping, it must be remembered that many historical county atlases were produced primarily to identify subscribers' factories, offices, residences, and landholdings and were funded by subscription fees. Landowners who did not subscribe were not always listed on the maps (Caston 1997, 100). As such, structures were not accurately depicted or placed (Gentilcore and Head 1984). A review of historical mapping also has inherent accuracy difficulties due to potential errors in geo-referencing. Geo-referencing is conducted by assigning spatial coordinates to fixed locations and using these points to reference the remainder of the map spatially. Due to changes in 'fixed' locations over time (e.g., road intersections, road alignments, shorelines, etc.), errors/difficulties of scale and the relative idealism of historical cartography, historical maps may not translate accurately into real space points. This may provide obvious inconsistencies during historical map review.

1.2.4 Heritage Properties

An inventory of heritage resources has been compiled and is maintained by the Municipality of Middlesex Centre (Middlesex Centre 2020). A review of the heritage inventories according to the Municipality of Middlesex Centre (Middlesex Centre 2020) and the Ontario Heritage Trust (Ontario Heritage Trust 2024) demonstrates no designated or listed properties within 300 metres of the study area.

1.3 Archaeological Context

1.3.1 The Natural Environment

The study area is situated within the Caradoc Sand Plains and London Annex physiographic region (Chapman and Putnam 1984, 146). This area is described as:

Immediately surrounding the City and extending several miles eastward there is a basin lying between 850 and 900 feet a.s.l [above sea level]. Into this basin the earliest glacial spillways discharged muddy water, laying down beds of silt and fine sand. Later, when standing water had retired westward to lower levels, gravelly alluvium was spread over the lower parts of the basin.

(Chapman and Putnam 1984, 146)

The soils within the study area were not mapped due to significant areas of land having been disturbed, modified, or permanently withdrawn from agricultural use (Hagerty and Kingston 1992). However, based on our understanding of the general soils in the township, the original soils of the study area would likely have been suitable for early agricultural practices.

Potable water is the single most important resource for any extended human occupation or settlement and since water sources in southwestern Ontario have remained relatively stable over time, proximity to drinkable water is regarded as a useful index for the evaluation of archaeological site potential. In fact,



distance to current water is one of the most used variables for predictive modeling of archaeological site locations in Ontario. The Thames River is located approximately 1.8 kilometres southeast of the study area. Numerous unnamed modified bodies of water, established following quarrying activities, are located within 50 metres of the study area.

1.3.2 Registered Archaeological Sites and Surveys

In Canada, archaeological sites are registered within the Borden system, a national grid system designed by Charles Borden in 1952 (Borden 1952). The grid covers the entire surface area of Canada and is divided into major units containing an area that is two degrees in latitude by four degrees in longitude. Major units are designated by uppercase letters. Each major unit is subdivided into 288 basic unit areas, each containing an area of 10 minutes in latitude by 10 minutes in longitude. The width of basic units reduces as one moves north due to the curvature of the earth. In southern Ontario, each basic unit measures approximately 13.5 kilometres east-west by 18.5 kilometres north-south. In northern Ontario, adjacent to Hudson Bay, each basic unit measures approximately 10.2 kilometres east-west by 18.5 kilometres north-south. Basic units are designated by lowercase letters. Individual sites are assigned a unique, sequential number as they are registered. These sequential numbers are issued by the MCM who maintain the *Ontario Archaeological Sites Database*. The study area is located within Borden block AfHi.

Information concerning specific site locations is protected by provincial policy and is not fully subject to the *Freedom of Information and Protection of Privacy Act* (Government of Ontario 1990b). The release of such information in the past has led to looting or various forms of illegally conducted site destruction. Confidentiality extends to media capable of conveying location, including maps, drawings, or textual descriptions of a site location. The MCM will provide information concerning site location to the party or an agent of the party holding title to a property, or to a licensed archaeologist with relevant cultural resource management interests.

An examination of the *Ontario Archaeological Sites Database* (Government of Ontario 2024a) has shown that 15 archaeological sites have been registered within a one-kilometre radius of the study area (Table 3). No sites were identified within 300 metres of the study area.

Table 3: Registered Archaeological Sites within One Kilometre of the Study Area

Borden #	Site Name	Cultural Affiliation	Site Type
AfHi-25	Cornell	Indigenous (Late Woodland)	Burial
AfHi-34	Not applicable (-)	Indigenous (Woodland)	Scatter
AfHi-58	Huron Rye	Indigenous (Late Archaic; Middle Woodland)	Campsite
AfHi-59	Vandenburgt	Indigenous (Late Archaic)	Campsite
AfHi-133	Scott Wales	Indigenous	Campsite
AfHi-181	Renwick Village	Indigenous (Late Archaic; Middle Woodland)	Campsite
AfHi-222	Valleyview 1	Indigenous	Scatter
AfHi-223	Valleyview 2	Indigenous	Scatter
AfHi-226	Valleyview 5	Indigenous	Scatter



Stage 1 Archaeological Assessment: Komoka Pump Station

Project Context

December 23, 2024

Borden #	Site Name	Cultural Affiliation	Site Type
AfHi-227	Valleyview 6	Indigenous	Campsite
AfHi-229	Valleyview 8	Indigenous	Scatter
AfHi-250	Keith Wales	Indigenous; Euro-Canadian	Unknown
AfHi-335	-	Indigenous (Early Woodland; Middle Woodland)	Scatter
AfHi-338	Komoka Station 1	Indigenous (Middle Woodland)	Scatter
AfHi-382	-	Indigenous	Scatter

An examination of the *Ontario Public Register of Archaeological Reports* did not identify any previous archaeological assessment within 50 metres of the study area (Government of Ontario 2024b).

1.4 Existing Conditions

The study area for the Project is located in part of Lot 4, Concession 2, former Geographic Township of Lobo, now Municipality of Middlesex Centre, Middlesex County, Ontario. The study area comprises grassland, scrubland, a walking trail, and existing infrastructure, encompassing an area of approximately 3.0 hectares.



2 Field Methods

Prior to the start of the Stage 1 archaeological assessment, the Municipality provided preliminary mapping of the Project's assessment area (i.e., the study area). This mapping was geo-referenced by Stantec's Geographical Information Services (GIS) team and a digital file (i.e., a shape file) was created of the study area. The digital file of the study area was uploaded to ArcGIS Field Maps powered by ESRI, customized by Stantec for archaeological survey and assessment, for digital data recording in the field. Data was recorded in the field on a handheld mobile device paired with a Trimble R1 Global Navigation Satellite System (GNSS) receiver to an accuracy of less than one metre.

Initial background research compiled information concerning registered and/or potential archaeological resources within the study area. A property inspection was conducted on May 16, 2024, by Parker Dickson (P256) under Project Information Form number P256-0803-2024, issued to Parker Dickson, MA by the MCM. The property inspection involved spot-checking the entirety of the study area to identify the presence or absence of features of archaeological potential in accordance with Section 1.2 of the MCM's 2011 *Standards and Guidelines for Consultant Archaeologists* (Government of Ontario 2011).

During the property inspection, the weather was warm and sunny. At no time were field, lighting, or weather conditions detrimental to the identification of features of archaeological potential. The photography from the property inspection is presented in Section 7.1 and confirms that the requirements for a Stage 1 property inspection were met, as per Section 1.2 and Section 7.7.2 Standard 1 of the MCM's 2011 *Standards and Guidelines for Consultant Archaeologists* (Government of Ontario 2011). Photo 1 to Photo 5 on Figure 6 illustrate typical examples of areas retaining archaeological potential and existing disturbances from the property inspection of the study area.

Based on the results of the property inspection, a large portion of the study area, approximately 60.0% (1.8 hectares) consists of grassland and scrubland. Photo 1 and Photo 2 in Section 7.1 illustrate typical examples of these areas.

Approximately 40.0% (1.2 hectares) of the study area consists of modern disturbances from walking trails, artificial berms, and existing municipal infrastructure. Photo 3 to Photo 5 in Section 7.1 illustrate typical examples of existing disturbance identified throughout the study area.



3 Analysis and Conclusions

Archaeological potential is established by determining the likelihood that archaeological resources may be present within a study area. Stantec applied archaeological potential criteria commonly used by the MCM (Government of Ontario 2011) to determine areas of archaeological potential within the study area. These variables include proximity to registered archaeological sites; distance to various types of water sources; soil texture and drainage; glacial geomorphology; elevated topography; and the general topographic variability of the area. However, it is worth noting that extensive land disturbance can eradicate archaeological potential.

Potable water is the single most important resource for any extended human occupation or settlement and since water sources in southern Ontario have remained relatively stable over time, proximity to drinkable water is regarded as a useful index for the evaluation of archaeological site potential. In fact, distance to current water is one of the most used variables for predictive modeling of archaeological site location in Ontario. Distance to modern or ancient water sources is generally accepted as the most important determinant of past human settlement patterns and considered alone, may result in a determination of archaeological potential. However, any combination of two or more other criteria, such as well-drained soils or topographic variability, may also indicate archaeological potential.

As discussed above, distance to water is an essential factor in archaeological potential modeling. When evaluating distance to water it is important to distinguish between water and shoreline, as well as natural and artificial water sources, as these features affect site locations and types to varying degrees. The MCM categorizes water sources in the following manner:

- Primary water sources: lakes, rivers, streams, and creeks.
- Secondary water sources: intermittent streams and creeks, springs, marshes, and swamps.
- Past water sources: glacial lake shorelines, relic river or stream channels, cobble beaches, and shorelines of drained lakes or marshes.
- Accessible or inaccessible shorelines: high bluffs, swamp or marshy lake edges, and sandbars stretching into marsh.

As stated in Section 1.3.1, the Thames River is located approximately 1.8 kilometres southeast of the study area, while numerous unnamed modified bodies of water are located within 50 metres of the study area. Ancient and/or relic tributaries of other water sources may have existed but are not identifiable today and are not indicated on historical mapping. Soil texture can also be an important determinant of past settlement, usually in combination of other factors such as topography. The soils within the study area were not mapped due to significant areas of land having been disturbed, modified, or permanently withdrawn from agricultural use (Hagerty and Kingston 1992). However, based on our understanding of the general soils in the township, the original soils of the study area would likely have been suitable for early agricultural practices.

A review of the MCM's *Ontario Archaeological Sites Database* identified 15 registered Indigenous (or multicomponent) archaeological sites within one kilometre of the study area (Government of Ontario 2024a). No archaeological sites were identified within 300 metres of the study area.



Stage 1 Archaeological Assessment: Komoka Pump Station
Analysis and Conclusions
December 23, 2024

Archaeological potential can be extended to areas of early Euro-Canadian settlement, including places of military or pioneer settlements; early transportation routes; and properties listed on the municipal register or designated under the *Ontario Heritage Act* (Government of Ontario 1990c) or property that local histories or informants have identified with possible historical events, activities, or occupations. Historical mapping demonstrates that the study area was occupied in the mid-to-late 19th century. Much of the established road and rail networks and agricultural settlement from the 19th century are still visible today. As detailed in Section 1.2.2, historical mapping illustrates that the village of Komoka was established by the mid-19th century, encompassing areas around the current study area. Adding to these observations is the presence of one registered multi-component archaeological site within one kilometre of the study area. No Euro-Canadian archaeological sites or components of multi-component sites are registered within 300 metres of the current study area.

The Stage 1 property inspection determined that portions of the study area, including walking trails, artificial berms, and existing municipal infrastructure, have been subject to deep and extensive land disturbance. As a result, these areas retain low to no archaeological potential. The Stage 1 property inspection determined the remaining portions of the study area comprise grassland and scrubland that retain archaeological potential.

In summary, the Stage 1 archaeological assessment of the Project, involving background research and a property inspection, determined that approximately 60.0% (1.8 hectares) of the study area retains archaeological potential. Based on the property inspection, the remainder of the study area, approximately 40.0% (1.2 hectares), consists of modern disturbances and retain low to no archaeological potential. Figure 6 illustrates the results of the Stage 1 archaeological assessment.



4 Recommendations

The Stage 1 archaeological assessment of the study area for the Project determined that approximately 60.0% (1.8 hectares) of the study area retains archaeological potential. In accordance with Section 1.3.1 and Section 7.7.4 of the MCM's 2011 *Standards and Guidelines for Consultant Archaeologists* (Government of Ontario 2011), **Stage 2 archaeological assessment is required for any portion of the Project's anticipated construction activities which impact an area of archaeological potential.**

The objective of Stage 2 archaeological assessment is to document archaeological resources within the portions of the study area still retaining archaeological potential and to determine whether these archaeological resources require further assessment. For areas that are actively or recently cultivated, the Stage 2 archaeological assessment must include the systematic walking of open ploughed fields as outlined in Section 2.1.1 of the MCM's 2011 *Standards and Guidelines for Consultant Archaeologists* (Government of Ontario 2011). The MCM standards require that all agricultural land, both active and inactive, be recently ploughed and sufficiently weathered to improve the visibility of archaeological resources. Ploughing must be deep enough to provide total topsoil exposure, but not deeper than previous ploughing, and must provide at least 80% ground surface visibility.

For areas inaccessible for ploughing, the Stage 2 archaeological assessment must include a test pit survey as outlined in Section 2.1.2 of the MCM's 2011 *Standards and Guidelines for Consultant Archaeologists* (Government of Ontario 2011). The MCM standards require that each test pit be at least 30 centimetres in diameter, excavated to at least five centimetres into subsoil, and have excavated soil screened through six-millimetre hardware cloth to facilitate the recovery of any cultural material that may be present. Prior to backfilling, each test pit will be examined for stratigraphy, cultural features, or evidence of fill.

If the archaeological field team determines any additional lands to be low and permanently wet, steeply sloped, or disturbed during the Stage 2 field work, those areas will not require survey, but will be photographically documented in accordance with Section 2.1 of the MCM's 2011 *Standards and Guidelines for Consultant Archaeologists* (Government of Ontario 2011).

In addition to the above, the Stage 1 archaeological assessment determined that the remaining portions of the study area, approximately 40.0% (1.2 hectares), retain low to no archaeological potential due to areas subject to deep and extensive modern disturbances such as walking trails, artificial berms, and existing municipal infrastructure. In accordance with Section 1.3.2 and Section 7.7.4 of the MCM's 2011 *Standards and Guidelines for Consultant Archaeologists* (Government of Ontario 2011), **Stage 2 archaeological assessment is not required for any portion of the Project's anticipated construction activities which impact an area of low to no archaeological potential.**

The MCM is asked to review the results presented and to enter this report into the *Ontario Public Register of Archaeological Reports*.



5 Advice on Compliance with Legislation

In accordance with Section 7.5.9 of the MCM's 2011 Standards and Guidelines for Consultant Archaeologists (Government of Ontario 2011a), the following standard statements are a required component of archaeological reporting and are provided from the MCM's 2011 Standards and Guidelines for Consultant Archaeologists (Government of Ontario 2011).

This report is submitted to the Minister of Citizenship and Multiculturalism as a condition of licensing in accordance with Part VI of the *Ontario Heritage Act*, R.S.O. 1990, c O.18 (Government of Ontario 1990c). The report is reviewed to ensure that it complies with the standards and guidelines that are issued by the Minister, and that the archaeological fieldwork and report recommendations ensure the conservation, protection and preservation of the cultural heritage of Ontario. When all matters relating to archaeological sites within the project area of a development proposal have been addressed to the satisfaction of the Ministry of Heritage, Sport, Tourism and Culture Industries, a letter will be issued by the ministry stating that there are no further concerns with regard to alterations to archaeological sites by the proposed development.

It is an offence under Sections 48 and 69 of the *Ontario Heritage Act* (Government of Ontario 1990c) for any party other than a licensed archaeologist to make any alteration to a known archaeological site or to remove any artifact or other physical evidence of past human use or activity from the site, until such time as a licensed archaeologist has completed fieldwork on the site, submitted a report to the Minister stating that the site has no further cultural heritage value or interest, and the report has been filed in the *Ontario Public Register of Archaeological Reports* referred to in Section 65.1 of the *Ontario Heritage Act* (Government of Ontario 1990c).

Should previously undocumented archaeological resources be discovered, they may be a new archaeological site and therefore subject to Section 48(1) of the *Ontario Heritage Act* (Government of Ontario 1990c). The proponent or person discovering the archaeological resources must cease alteration of the site immediately and engage a licensed consultant archaeologist to carry out archaeological fieldwork, in compliance with Section 48(1) of the *Ontario Heritage Act* (Government of Ontario 1990c).

The *Funeral, Burial and Cremation Services Act*, 2002, S.O. 2002, c.33 (Government of Ontario 2002), requires that any person discovering or having knowledge of a burial site shall immediately notify the police or coroner. It is recommended that the Registrar of Cemeteries at the Ministry of Business and Public Delivery Services and Procurement is also immediately notified.

Archaeological sites recommended for further archaeological fieldwork remain subject to Section 48(1) of the *Ontario Heritage Act* (Government of Ontario 1990c) and may not be altered, or have artifacts removed, except by a person holding an archaeological license.



6 Bibliography

- Birch, Jennifer and Ronald F. Williamson. 2013. *The Mantle Site: An Archaeological History of an Ancestral Huron Wendat Community*. Lanham: Altamira Press.
- Birch, Jennifer. 2015. Current Research on the Historical Development of Northern Iroquoian Societies. *Journal of Archaeological Research* 22(4): 263-323.
- Bohaker, Heidi. 2006. Nindoodemag: Anishinaabe Identities in the eastern Great Lakes region, 1600 – 1900. Unpublished PhD dissertation. Toronto: University of Toronto.
- Borden, Charles E. 1952. A Uniform Site Designation Scheme for Canada. *Anthropology in British Columbia*, No. 3, 44-48.
- Caston, Wayne A. 1997. Evolution in the Mapping of Southern Ontario and Wellington County. *Wellington County History* 10:91-106.
- Chapman, Lyman John and Donald F. Putnam. 1984. *The Physiography of Southern Ontario*. 3rd ed. Ontario Geological Survey Special Volume 2. Toronto: Ontario Ministry of Natural Resources.
- Ellis, Chris J. and Neal Ferris (editors). 1990. *The Archaeology of Southern Ontario to A.D. 1650*. Occasional Publication of the London Chapter, OAS, Number 5. London: London Chapter, Ontario Archaeological Society.
- Ellis, Chris J., Ian T. Kenyon, and Michael W. Spence. 1990. The Archaic. In *The Archaeology of Southern Ontario to A.D. 1650*, edited by Chris Ellis and Neil Ferris, 65-124. London: London Chapter, Ontario Archaeological Society.
- Ellis, Christopher J. 2013. Before Pottery: Paleoindian and Archaic Hunter-Gatherers. In *Before Ontario: The Archaeology of a Province*, edited by Marit K. Munson and Susan M. Jamieson, 35-47. Montreal and Kingston: McGill-Queen's University Press.
- Feest, J. E. and C. F. Feest. 1978. "The Ottawa." In *Handbook of North American Indians, Volume 15 Northeast*, edited by Bruce G. Trigger, pp. 772-786. Washington: Smithsonian Institution Press.
- Ferris, Neal. 2009. *The Archaeology of Native-Lived Colonialism: Challenging History in the Great Lakes*. Tucson: University of Arizona Press.
- Gentilcore, R. Louis and C. Grant Head. 1984. *Ontario's History in Maps*. Toronto: University of Toronto Press.
- Goodspeed Publishers. 1889. *History of the County of Middlesex, Canada*. Toronto and London: W.A. & C.L. Goodspeed, Publishers.



Stage 1 Archaeological Assessment: Komoka Pump Station

Bibliography

December 23, 2024

- Government of Ontario. 1990a. *Environmental Assessment Act*, R.S.O. 1990, CHAPTER E.18. Electronic document: [Environmental Assessment Act, R.S.O. 1990, c. E.18 | ontario.ca](#). Last accessed December 23, 2024.
- Government of Ontario. 1990b. *Freedom of Information and Protection of Privacy Act*, R.S.O. 1990, c. F.31. Electronic document: [Freedom of Information and Protection of Privacy Act, R.S.O. 1990, c. F.31 | ontario.ca](#). Last accessed December 23, 2024.
- Government of Ontario. 1990c. *Ontario Heritage Act*, R.S.O. 1990, CHAPTER O.18. Electronic document: [Ontario Heritage Act, R.S.O. 1990, c. O.18 | ontario.ca](#). Last accessed December 23, 2024.
- Government of Ontario. 2002. *Funeral, Burial and Cremation Services Act, 2002*, S.O. 2002, c. 33. Electronic document: [Funeral, Burial and Cremation Services Act, 2002, S.O. 2002, c. 33 | ontario.ca](#). Last accessed December 23, 2024.
- Government of Ontario. 2011. *Standards and Guidelines for Consultant Archaeologists*. Toronto: Ministry of Citizenship and Multiculturalism.
- Government of Ontario. 2024a. *Archaeological Sites Database Files*. Electronic document: <https://www.pastport.mtc.gov.on.ca/APSWeb/pif/projectSiteDataSearch.xhtml>. Last accessed December 23, 2024.
- Government of Ontario. 2024b. *Past Portal Report Database Files*. Electronic document: <https://www.pastport.mtc.gov.on.ca/APSWeb/report/reportSearch.xhtml>. Last accessed December 23, 2024.
- Hagerty T.P., and M. S. Kingston. 1992. *The Soils of Middlesex County Volume 1*. Guelph, Ontario: Ontario Ministry of Agriculture and Food.
- Heidenreich, Conrad E. 1978. "Huron". In *Handbook of North American Indians, Volume 15, Northeast*, edited by Bruce G. Trigger, pp. 368-388. Washington: Smithsonian Institution Press.
- Konrad, Victor. 1981. An Iroquois Frontier: the North Shore of Lake Ontario during the Late Seventeenth Century. *Journal of Historical Geography* 7(2).
- Lennox, Paul A. and William R. Fitzgerald. 1990. "The Culture History and Archaeology of the Neutral Iroquoians". In Ellis and Ferris 1990, pp. 405-456.
- Loewen, Brad and Claude Chapdelaine (editors). 2016. *Contact in the 16th Century: Networks among Fishers, Foragers and Farmers*. Mercury Series Archaeology Paper 176. Ottawa: University of Ottawa Press.
- Métis Nation of Ontario. 2024. *Métis Historic Timeline*. Electronic document: [Métis Historic Timeline - Métis Nation of Ontario](#). Last accessed December 23, 2024.



Stage 1 Archaeological Assessment: Komoka Pump Station
Bibliography
December 23, 2024

- Middlesex Centre. 2020. *Municipality of Middlesex Centre: Designated Heritage Properties List*. Accessed electronically: <https://www.middlesexcentre.on.ca/sites/default/files/2020-12/Municipality%20of%20Middlesex%20Centre%20-%20Heritage%20Properties%20List.pdf>. Last accessed December 23, 2024.
- Middlesex Centre. 2024. *Servicing Master Plan*. Accessed electronically: <https://www.middlesexcentre.ca/articles/servicing-master-plan>. Last accessed December 23, 2024.
- Morris, J.L. 1943. *Indians of Ontario*. 1964 reprint. Toronto: Department of Lands and Forests.
- Murphy, Carl and Neil Ferris. 1990. The Late Woodland Western Basin Tradition in Southwestern Ontario. In Ellis and Ferris 1990, 189-278.
- Ontario Heritage Trust. 2024. *Ontario Heritage Act Register*. Accessed electronically: <https://www.heritagetrust.on.ca/pages/tools/ontario-heritage-act-register>. Last accessed December 23, 2024.
- Page, H. R. & Co. 1878. *Illustrated Historical Atlas of the County of Middlesex, Ontario*. Toronto: H. R. Page & Co.
- Rogers, Edward S. 1978. Southeastern Ojibwa. In *Handbook of North American Indians, Vol. 15 Northeast*, pp. 760-771. B.G. Trigger, ed. Washington: Smithsonian Institution.
- Schmalz, Peter S. 1991. *The Ojibwa of Southern Ontario*. Toronto: University of Toronto Press.
- Smith, W.H. 1846. *Smith's Canadian Gazetteer: Comprising Statistical and General Information Respecting all Parts of the Upper Province, or Canada West*. Toronto: H. & W. Rowsell.
- Stevens, E. W. 2004. *First Nations underwater archaeology of the Trent-Severn Waterway*. Copy on file at Parks Canada, Ottawa.
- Stewart, Andrew M. 2013. Water and Land. In *Before Ontario: The Archaeology of a Province*, edited by Marit K. Munson and Susan M. Jamieson, 24-34. Montreal and Kingston: McGill-Queen's University Press.
- Stone, L.M. and D. Chaput. 1978. "History of the Upper Great Lakes Area." In *Handbook of North American Indians, Volume 15, Northeast*, edited by Bruce G. Trigger, pp. 602-609. Washington: Smithsonian Institution Press.
- Tremaine, George R. 1862. *Tremaine's Map of the County of Middlesex, Canada West*. Toronto: George R. Tremaine.
- Williamson, Ronald F. 2013. The Woodland Period, 900 BCE to 1700 CE. In *Before Ontario: The Archaeology of a Province*, edited by Marit K. Munson and Susan M. Jamieson, 48-61. Montreal and Kingston: McGill-Queen's University Press.



7 Images

7.1 Photographs

Photo 1: Area of potential, showing grassland, facing southwest



Photo 2: Area of potential, showing scrubland, facing southwest



Photo 3: Disturbed area, showing artificial berm and disturbed soils, facing north-northeast



Photo 4: Disturbed area, showing walking trail, facing northeast



**Stage 1 Archaeological Assessment: Komoka Pump Station
Images**
December 23, 2024

**Photo 5: Disturbed area, show existing
infrastructure, facing south**



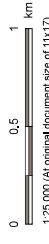
8 Maps

Maps of the study area for the Stage 1 archaeological assessment follow on succeeding pages.

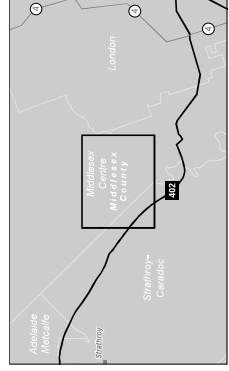




- Legend**
- Study Area
 - Highway
 - Major Road
 - Minor Road
 - Railway
 - Watercourse (Intermittent)
 - Watercourse (Permanent)
 - Waterbody
 - Wooded Area
 - Municipal Boundary, Upper Tier
 - Municipal Boundary, Lower Tier



Notes
 1. Base features produced under license with the Ontario Ministry of Natural Resources and Forestry © King's Printer for Ontario, 2023.
 2. Base features produced under license with the Ontario Ministry of Natural Resources and Forestry © King's Printer for Ontario, 2023.

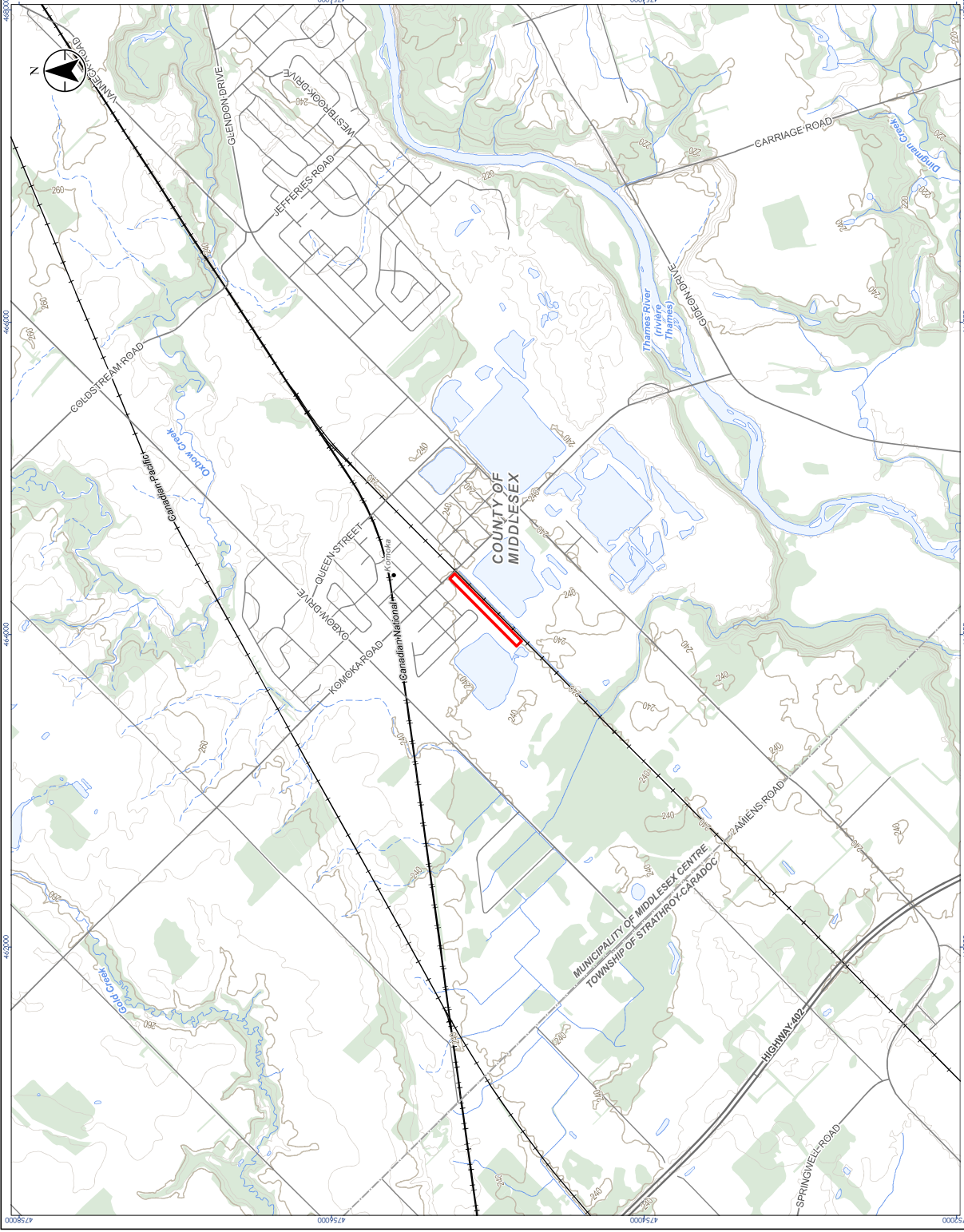


Project Location
 Komoka, Ontario
 Prepared by walking on 2024-05-29

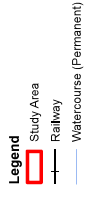
Client/Project
 MUNICIPALITY OF MIDDLESEX CENTRE
 MASTER SERVING PLAN
 STAGE 1 ARCHAEOLOGICAL ASSESSMENT

Figure No. 1

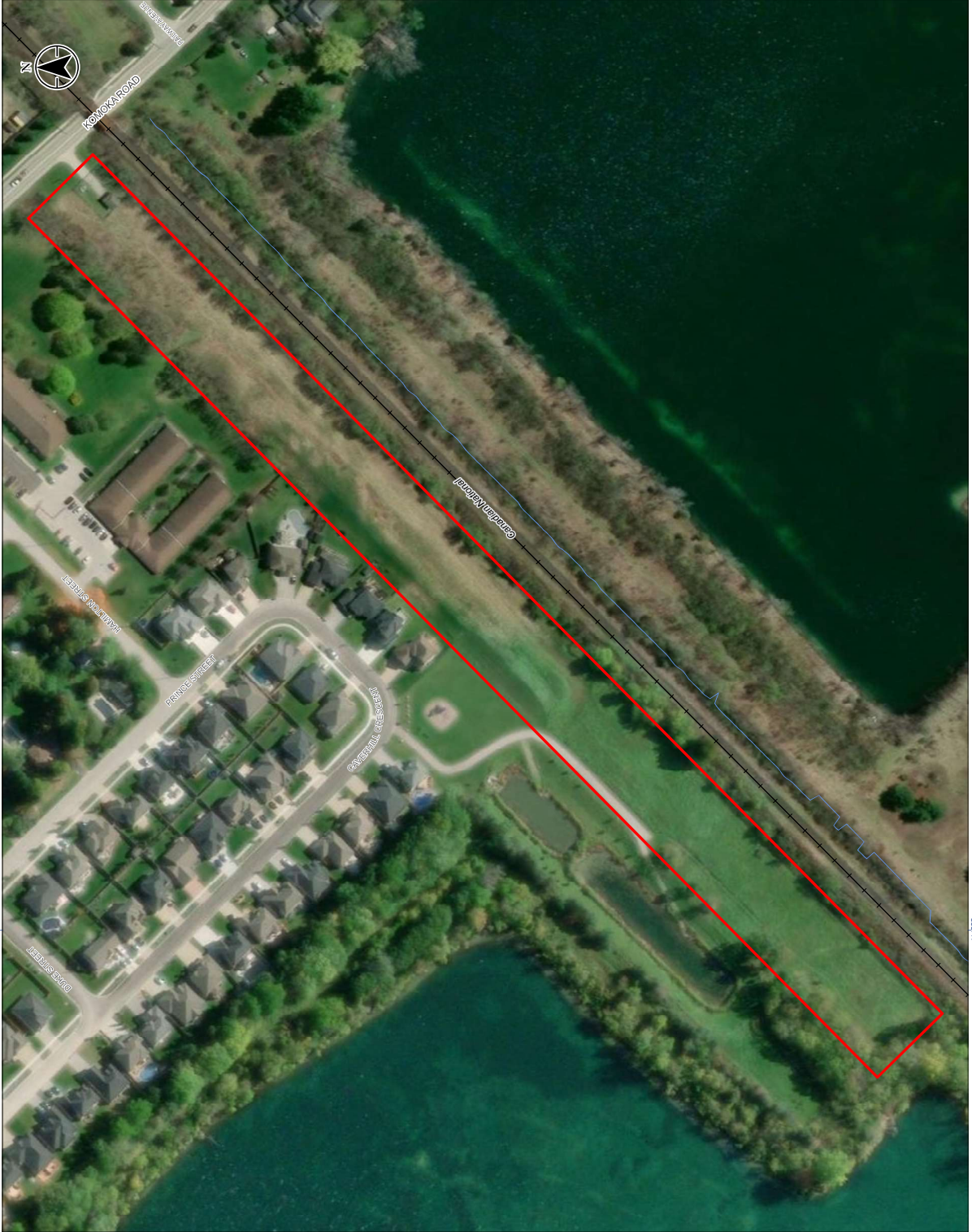
Title
 Location of the Study Area



Disclaimer: Stantec assumes no responsibility for data supplied in electronic format. The recipient accepts full responsibility for verifying the accuracy and completeness of the data. The recipient releases Stantec, its officers, employees, consultants and agents, from any and all claims arising in any way from the content or provision of the data.



Notes
 1:2,000 (At original document size of 11x17)
 1. NAD 83 UTM Zone 17N
 2. Base features produced under license with the Ontario Ministry of Natural Resources and Forestry © King's Printer for Ontario, 2023.
 3. Imagery source: Natural Resources Canada



Client/Project
 MUNICIPALITY OF MIDDLESEX CENTRE
 MASTER SERVING PLAN
 STAGE 1 ARCHAEOLOGICAL ASSESSMENT
 Figure No. 2

Title
 Detailed Location of the Study Area

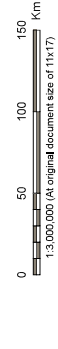
44000
 475000



Legend

- ★ Study Area
- Waterbody

- A Treaty No. 391, May 9th, 1791 (Mississauga and Chippewa)
- AA Treaty No. 72, October 30th, 1854 (Chippewa)
- AB Treaty No. 82, February 9th, 1857 (Chippewa)
- AC Williams Treaty, October 31st and November 15th, 1823 (Chippewa and Mississauga)
- AD John Collins Purchase, October 31st, 1803 (Chippewa)
- B Crawford's Purchase, October 9th, 1783 (Algonquin and Injionis)
- B1 Crawford's Purchase, 1793, 1797, 1798 (Mississauga)
- B2 Crawford's Purchase, 1793, 1797, 1798 (Mississauga)
- C Treaty No. 2, May 19th, 1790 (Ojibwa, Chippewa, Potawatomi, and Huron)
- D Halimand Tract: from the Crown to the Mohawk, 1793
- E Treaty No. 1, August 1st, 1763 (Chippewa)
- F Treaty No. 5, May 22nd, 1796 (Chippewa)
- G Treaty No. 6, September 7th, 1796 (Chippewa)
- H Treaty No. 7, June 30th, 1796 (Chippewa)
- I Treaty No. 11, June 30th, 1796 (Chippewa)
- J Treaty No. 13, August 1st, 1805 (Mississauga)
- K Treaty No. 14, August 1st, 1805 (Mississauga)
- L Treaty No. 16, November 18th, 1815 (Chippewa)
- M Treaty No. 18, October 17th, 1818 (Chippewa)
- N Treaty No. 19, November 18th, 1815 (Chippewa)
- O Treaty No. 20, November 5th, 1818 (Chippewa)
- P Treaty No. 21, March 18th, 1819 (Chippewa)
- Q Treaty No. 27 1/2, April 25th, 1825 (Ojibwa and Chippewa)
- R Treaty No. 35, August 13th, 1833 (Wendat or Huron)
- S Treaty No. 36, August 13th, 1833 (Chippewa and Ojibwa, "For All Indians To Whom It May Concern")
- T Treaty No. 45 1/2, August 9th, 1836 (Algonquin)
- U Treaty No. 46, August 9th, 1836 (Algonquin)
- V Treaty No. 50, Robinson, Superior, September 7th, 1850 (Ojibwa)
- Y Treaty No. 61, Robinson, Huron, September 8th, 1850 (Ojibwa)
- Z Treaty No. 61, Robinson, Huron, September 8th, 1850 (Ojibwa)



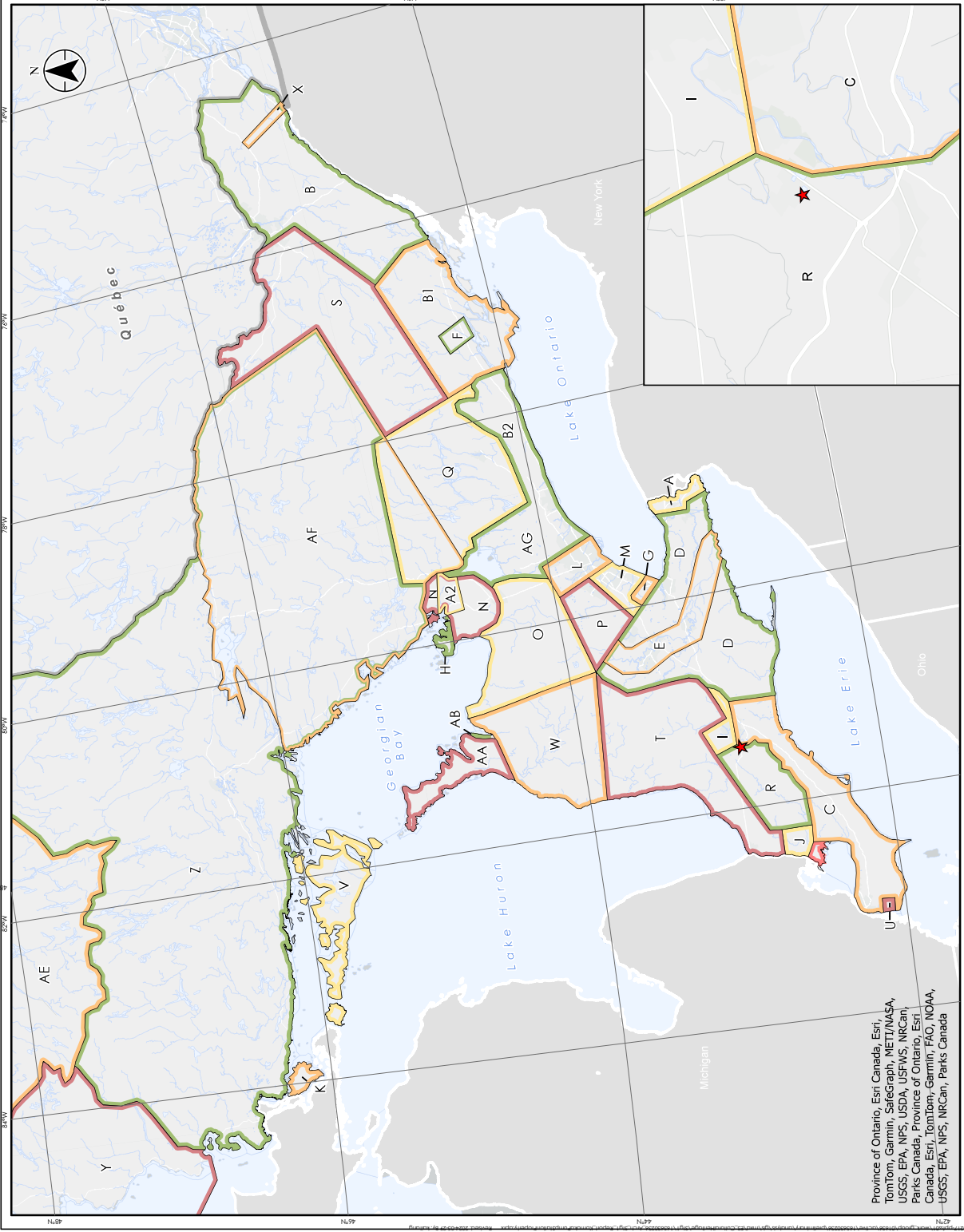
Notes

- Coordinate System: NAD 1983, Station: Canada Lambert
- For more information on the Ontario Ministry of Natural Resources and Forestry, visit www.mnr.gov.on.ca
- Treaty boundaries adapted from Morris 1943 (1964 reprint). For cartographic purposes only.

Project Location
Kemoka, Ontario
Prepared by: Kaitling on 2024-05-29

Client/Project
MUNICIPALITY OF MIDDLESEX CENTRE
MASTER SERVING PLAN
STAGE 1 ARCHAEOLOGICAL ASSESSMENT
Figure No. 3

Title
Treaties and Purchases (Adapted from Morris 1943)



Province of Ontario, Esri Canada, Esri, TomTom, Garmin, SafeGraph, METI/NASA, USGS, EPA, NPS, USDA, USFWS, NRCAN, Parks Canada, Province of Ontario, Esri Canada, Esri, TomTom, Garmin, FAO, NOAA, USGS, EPA, NPS, NRCAN, Parks Canada

Disclaimer: Stantec assumes no responsibility for data supplied in electronic format. The recipient accepts full responsibility for verifying the accuracy and completeness of the data. The recipient releases Stantec, its officers, employees, consultants and agents, from any and all claims arising in any way from the content or provision of the data.



Stantec

Legend

Study Area - Approximate Location



Notes
1. Historical information not to scale.
2. Reference: Trimble, George F., 1962, "Trimmer's Map of the County of Middlesex, Ontario, Canada, 1862", Toronto: George F. Trimble.
Project Location
Kornoka, Ontario
Prepared by **Walter** on 2024-05-29

Client/Project
MUNICIPALITY OF MIDDLESEX CENTRE
MASTER SERVICING PLAN
STAGE 1 ARCHAEOLOGICAL ASSESSMENT
Figure No. **4**

Title
Portion of the 1862 Historical County Map of Middlesex County

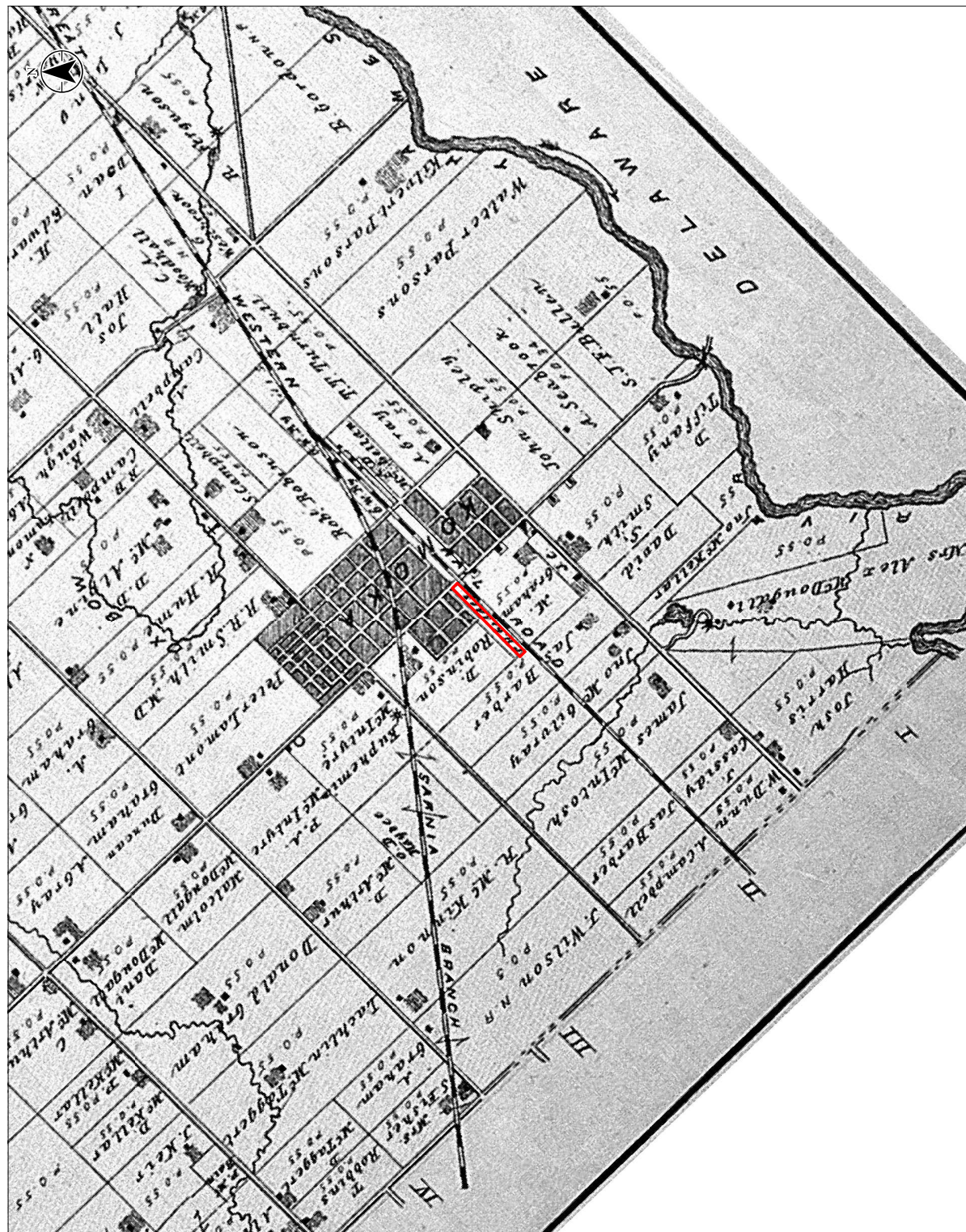
Disclaimer: Stantec assumes no responsibility for data supplied in electronic format. The recipient accepts full responsibility for verifying the accuracy and completeness of the data. The recipient releases Stantec, its officers, employees, consultants and agents, from any and all claims arising in any way from the content or provision of the data.



Stantec

Legend

Study Area - Approximate Location



Notes
 1. Historical information not to scale
 2. Reference: Page H, F, and Co. 1877. Illustrated Historical Atlas of Eglin County, Toronto, Ontario, 1878.
 Project Location
 Kemoka, Ontario
 Prepared by Kaitang on 2024-05-29

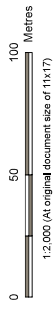
Client/Project
 MUNICIPALITY OF MIDDLESEX CENTRE
 MASTER SERVICING PLAN
 STAGE 1 ARCHAEOLOGICAL ASSESSMENT
 Figure No. 5

Title
 Portion of the 1878 Illustrated Historical Atlas of the County of Middlesex

Disclaimer: Stantec assumes no responsibility for data supplied in electronic format. The recipient accepts full responsibility for verifying the accuracy and completeness of the data. The recipient releases Stantec, its officers, employees, consultants and agents, from any and all claims arising in any way from the content or provision of the data.



- Legend
- Study Area
- Archaeology Photo Log
- Archaeological Assessment
 - Archaeological Potential - Further Archaeological Work Required (Stage 2)
 - Archaeological Potential - No Further Archaeological Work Required



Notes:
1. Base features produced under license with the Ontario Ministry of Natural Resources and Forestry © King's Printer for Ontario, 2023.
2. Imagery source: Natural Resources

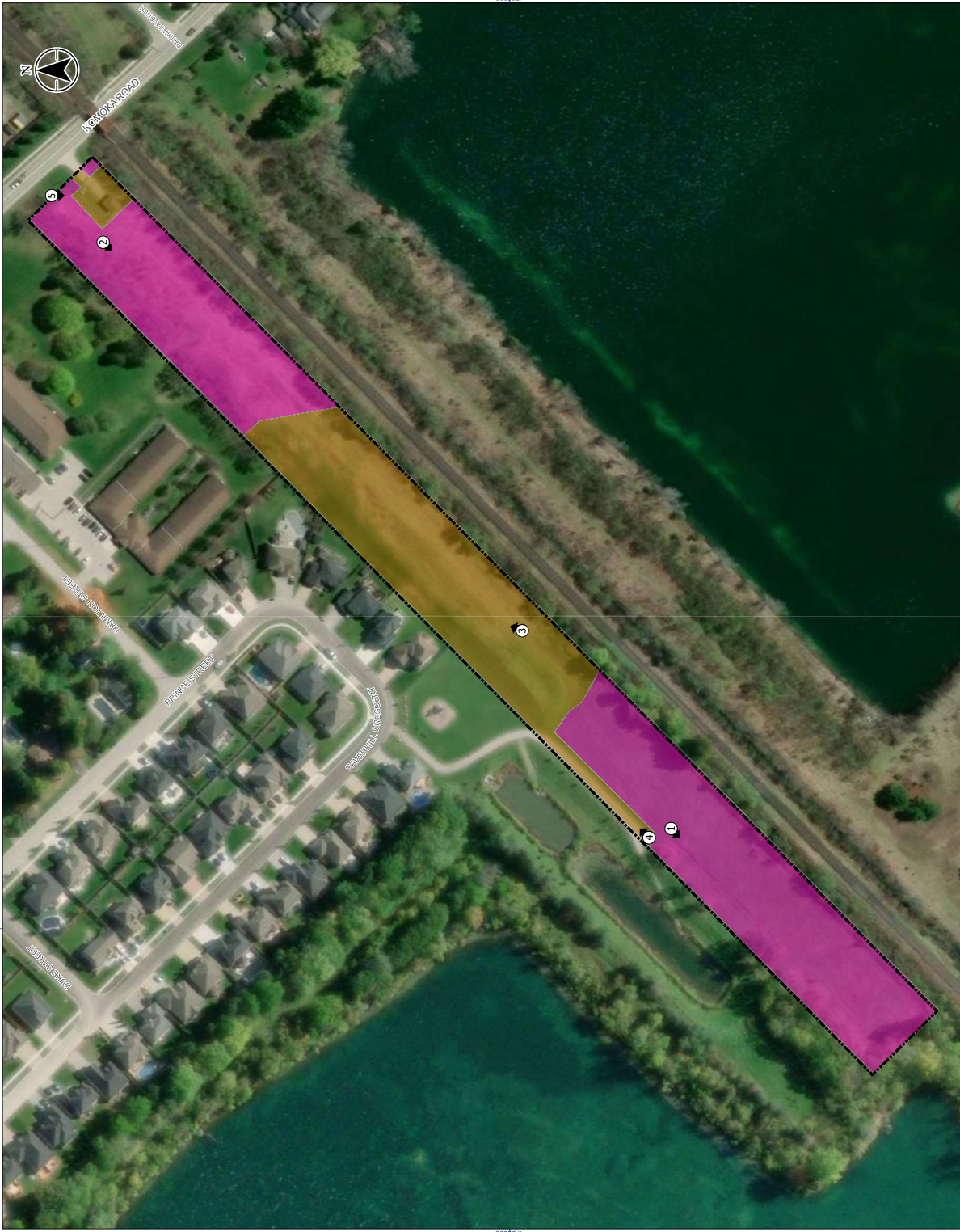
Project Location
Kornoka, Ontario

Prepared by: Halting on 2024-05-29

Client/Project
MUNICIPALITY OF MIDDLESEX CENTRE
MASTER SERVING PLAN
STAGE 1 ARCHAEOLOGICAL ASSESSMENT

Figure No. 6

Stage 1 Archaeological Assessment Results



Disclaimer: Stantec assumes no responsibility for data supplied in electronic format. The recipient accepts full responsibility for verifying the accuracy and completeness of the data. The recipient releases Stantec, its officers, employees, consultants and agents, from any and all claims arising in any way from the content or provision of the data.